

## Product datasheet for **MR210882**

### Jade1 (NM\_001130184) Mouse Tagged ORF Clone

#### Product data:

Product Type:	Expression Plasmids
Product Name:	Jade1 (NM_001130184) Mouse Tagged ORF Clone
Tag:	Myc-DDK
Symbol:	Jade1
Synonyms:	AU041499; D530048A03Rik; mKIAA1807; Phf17
Mammalian Cell Selection:	Neomycin
Vector:	pCMV6-Entry (PS100001)
E. coli Selection:	Kanamycin (25 ug/mL)



[View online »](#)

**ORF Nucleotide Sequence:**

>MR210882 representing NM\_001130184  
 Red=Cloning site Blue=ORF Green=Tags(s)

TTTTGTAATACGACTCACTATAGGGCGGCCGGAATTCGTCGACTGGATCCGGTACCGAGGAGATCTGCC  
 GCC**CGCATCGCC**

ATGAAACGAGGTGCGCTTCCCAGCAGCAGTGAGGATTCTGACGACAATGGCAGCTTGTCAACGACATGGT  
 CCCAGCATTCTCGATCCCAGCATGGGAGGAGTAGTACCTGCTCTAGACCTGAAGATCGAAAAGCCTTCTGA  
 GGTGTTTAGGACCGACCTGATCACTGCCATGAAGTTGCATGACTCCTACCAGCTGAACCCGGATGACTAC  
 TACGTGCTGGCTGATCCCTGGAGACAGGAGTGGGAGAAAGGGTCCAGGTGCCTGTGAGCCAGGGACCA  
 TCCCACAGCCTGTGGCCAGGTTGTGTCTGAAGAGAAGTCTCTCATGTTTCATCAGGCCAAAGAAGTACAT  
 CGCGTCGTCGGCTCTGAGCCCCAGCGTTAGGCTACGTCGATATCCGGACTCTGGCAGACAGTGTGTGT  
 CGGTATGACCTCAATGATATGGATGCTGCGTGGCTGGAAGTAACCAATGAAGAATTAAGGAGATGGGGA  
 TGCCGGAGCTGGACGAGTACCCATGAAAGGGTCTTGGAGGAATCGAACAGCGATGCTATGACAATAT  
 GAATCATGCCATAGAGACAGAAGAGGGCTTGGGGATTGAATACGACGAAGACGTTGTCTGCGATGTCTGC  
 CAGTCACCTGATGGCGAGGACGGCAACGAGATGGTGTCTGTGACAAGTGAACATCTGTGTGCACCAGG  
 CTTGCTATGGGATCCTCAAGGTGCCAGAGGGCAGTTGGCTATGTGCTACATGTGCCCTGGGAGTTACGCC  
 AAAATGTTTGTGTGTGCCAAGAAAGGCGGAGCTATGAAGCCGACCCGCAGCGGAACCAAGTGGTCCAC  
 GTCAGCTGTGCCCTGTGGATCCCTGAGGTAAGCATTGGCAGCCCTGAGAAGATGGAGCCCATCACAAAAG  
 TGTCTCACATCCCAGCAGCCGGTGGCGCTTGTGTGCAGCCTCTGCAATGAGAAATTCGGGGCCTCCAT  
 ACAGTGTCTGTGAAGAACTGCCGGACAGCCTTCCACGTGACTTGTGCTTTTGACCGTGGCTGGAGATG  
 AAGACCATATTGGCAGAGAATGATGAAGTCAAATCAAGTCTACTGCCAAAGCACAGCTCACACAGAA  
 AACCCGAGGAGGGCCTGGGTGAAGGAGCAGCCAGGAGAATGGGGCCCTGAGAGTTCTCCCCAGAGCC  
 TCTGGAGCCCTATGGTAGTCTGGAGCCGAATCGAGAGGAGGCCACCCGGTGAGTGTTCGCAAGCAGAAG  
 CTACAGCAGCTGGAGGATGAGTTCTACACCTTTGTCAACCTGCTGGATGTGGCCAGGGCGCTGCGGCTGC  
 CTGAGGAAGTGGTGGATTTCTGTACCAGTACTGGAAGTTGAAGAGGAAGATCAACTTCAACAAGCCCT  
 CATCACCCCAAAGAAAGACGAAGAGGACAATCTAGCCAAGCGGGAGCAGGATGTCTTGTTAGGAGGCTG  
 CAGCTGTTACGCACCTGCGGCAGGACCTGGAGAGGGTTCGGAACCTCACTTACATGGTGACCCGCAGGG  
 AAAAGATTAACGGTCTGTGTGCAAAGTCCAGGAACAAATTTTCACTCAGTACACTAAGCTCTTGGAGCA  
 AGAAAAAGTTTCAGGTGTGCCTTCTTCTGCTCCTCCGCACTGGAGAACATGCTTTTTTTCAACAGTCT  
 TCTGTGGGCCCAATGCTCCCAAGATAGAGGACTTGAATGGCATTCTGCATTCTCAGGAAACAAATGG  
 GCACTTCCTTGGTTCATCCACTGAAAAAGTCCCATAAACGAGATGCAAGTGCAGAAATAGTTCTGGGACCGA  
 GGGCAAGACCTCGCATAAGCAGCCAGGTCTTTGTGGTAGAAGGGAGGGGCTGGAGGTCTCAGAAAGCTTG  
 CTGAGCTTAGAAAAGACTTTTGCAGAAGCACGTCTCCTATCATCAGCACAAACAGAAAAATGGTGTGGTGA  
 CCCCAGACCATGGGAAAAGAAGAGACAATCGTTTTTCATTGTGATCTCGTTAAAGGAGACTTAAAGGACAA  
 ATCTTTTAAGCAGAGTCAAAAGCCTCTCAGGTCCACAGACACATCCCAGAGGCATCTGGACAACACAAGA  
 GCTGCCACCTCCCTGGAGTAGGGCAGTCAGCACCTGGCACCAGGAAGGAGATTGTGCCAAAGTGAATG  
 GCTCCCTAGTCAAAGTGCCTATAACACCTGCCAGCCCAGTGAAAAGCTGGGGAGGATTCCGGATTCCAAA  
 GAAGGGGAGCGGCAGCAGCAAGGAGAAGCCCATGATGGGGCTGCCACCAGCACTCAGACTGCTCCCAT  
 CTGGGTGTAAGCCGAGCTCCAGCCAAGGAGAGAGCGAAGAGCAGGTTAAGAGCTGACAGTGAGAATGATG  
 GGTACGCCCTGATGGGAAATGAGTGAAGTCTCAGAGAGCGAGGCATCAGAGAAGAAATGTATCCATGCCAG  
 CAGCACCATCAGCAGGAGGACAGATATCATCAGGCGAAGCATCTTGGCCTCT

**ACGCGT**ACGCGGCCGCTCGAGCAGAACTCATCTCAGAAGAGGATCTGGCAGCAATGATATCCTGGATT  
 ACAAGGATGACGACGATAAGGTTTAA

**Protein Sequence:** >MR210882 representing NM\_001130184  
Red=Cloning site Green=Tags(s)

MKRGRLPSSSEDSDDNGSLSTTWSQHSRSQHGRSSTCSRPEDRKPSEVFRTDLITAMKLHDSYQLNPDDY  
YVLADPWRQEWKGVQVPVSPGTIPQPVARVVSEEKSLMFIKPKKYIASSGSEPPALGYVDIRTLADSV  
RYDLNDMDAAWLEVTNEEFKEMGPELDEYTMERVL EEFQRCYDNMNHAIETEEGLGIEYDEDVCDVC  
QSPDGEDGNEMVFCDKCNICVHQACYGILKVPESWLCRTCALGVQPKLLCPKKGAMKPTRSGTKWVH  
VSCALWIPEVSIQSPEKMEPITKVSHIPSSRWALVCSLCNEKFGASIQCSVKNCRTAFHVTCADFRL  
KTILAENDEVKFKSYCPKHSSHRKPEEGLGEGAAQENGAPESSPQSPLEPYGSLEPNREEAHRVSVRKQK  
LQQLEDEFYTFVNLLDVARALRLPEEVDFLYQYWKLKPKINFNKPLITPKKDEEDNLAKREQDVLFRRL  
QLFTHLRQDLERVRNLTYMVTREKIKRSVCKVQEQIFTQYTKLLEQEKVSGVPSSESSALENMLFFNSP  
SVGNAPKIEDLKWHSFAFRKQMGTSLVHPLKSHKRDVQNSGTEGKTSHKQPLRSTDTSRHLDNTR  
LSLEKTFAEARLLSSAQKNGVTPDHGKRRDNRFHCDLVKGDLDKSKFKQSHKPLRSTDTSRHLDNTR  
AATSPGVGQSAPGTRKEIVPKCNGSLVKVPITPASPVKSWGGFRIPKKGERRQQQGEAHDGACHQHSDCSH  
LGVSRAPAKERAKSRLRADSENDGYAPDGEMSDSESEASEKCCIHASSTISRRTDIIRRSILAS

TRTRPLEQKLI SEEDLAANDILDYKDDDDKV

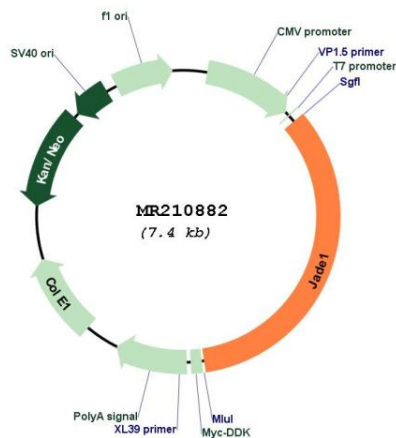
**Chromatograms:** [https://cdn.origene.com/chromatograms/mm9039\\_g04.zip](https://cdn.origene.com/chromatograms/mm9039_g04.zip)

**Restriction Sites:** Sgfl-Mlul



<b>OTI Annotation:</b>	This clone was engineered to express the complete ORF with an expression tag. Expression varies depending on the nature of the gene.
<b>Components:</b>	The ORF clone is ion-exchange column purified and shipped in a 2D barcoded Matrix tube containing 10ug of transfection-ready, dried plasmid DNA (reconstitute with 100 ul of water).
<b>Reconstitution Method:</b>	<ol style="list-style-type: none"> <li>1. Centrifuge at 5,000xg for 5min.</li> <li>2. Carefully open the tube and add 100ul of sterile water to dissolve the DNA.</li> <li>3. Close the tube and incubate for 10 minutes at room temperature.</li> <li>4. Briefly vortex the tube and then do a quick spin (less than 5000xg) to concentrate the liquid at the bottom.</li> <li>5. Store the suspended plasmid at -20°C. The DNA is stable for at least one year from date of shipping when stored at -20°C.</li> </ol>
<b>RefSeq:</b>	<u>NM_001130184.1, NP_001123656.1</u>
<b>RefSeq Size:</b>	5486 bp
<b>RefSeq ORF:</b>	2505 bp
<b>Locus ID:</b>	269424
<b>UniProt ID:</b>	<u>Q6ZPI0</u>
<b>Cytogenetics:</b>	3 B
<b>MW:</b>	94.3 kDa
<b>Gene Summary:</b>	Component of the HBO1 complex which has a histone H4-specific acetyltransferase activity, a reduced activity toward histone H3 and is responsible for the bulk of histone H4 acetylation in vivo. Transcriptional coactivator, it may also promote acetylation of nucleosomal histone H4 by KAT5. Promotes apoptosis. May act as a renal tumor suppressor. Negatively regulates canonical Wnt signaling; at least in part, cooperates with NPHP4 in this function (By similarity). [UniProtKB/Swiss-Prot Function]

### Product images:



Circular map for MR210882