

Product datasheet for **MR210835**

Odf2 (NM_001113213) Mouse Tagged ORF Clone

Product data:

Product Type:	Expression Plasmids
Product Name:	Odf2 (NM_001113213) Mouse Tagged ORF Clone
Tag:	Myc-DDK
Symbol:	Odf2
Synonyms:	A1848335; MMTEST29
Vector:	pCMV6-Entry (PS100001)
E. coli Selection:	Kanamycin (25 ug/mL)
Cell Selection:	Neomycin



[View online »](#)

ORF Nucleotide
Sequence:

>MR210835 ORF sequence
Red=Cloning site Blue=ORF Green=Tags(s)

TTTTGTAATACGACTCACTATAGGGCGGCCGGGAATTCGTCGACTGGATCCGGTACCGAGGAGATCTGCC
GCC**CGCATCGCC**

ATGAAGGACCGATCTTCAACTCCCCCTTACATGTTACGTGGATGAGAACACTCTGTCCACGTCCACA
TAAAAAACTCCCGAAACCGTCAGCAGCCAGCAGCCAGAAATCTCATAAGCGCGGAATGAAAGGGGACAC
CGTGAATGTACGGCGGAGTGTCCGGGTGAAAACCAAGGTACCTTGATGCCCCCTGGAAAATCATCTGCC
CGGCATGTGGGATGCAAGTGGGAGAATCCACCTCATTGCCTGGAGATCACACCACCATCTTCAGAAAAGC
TGGTCTCGGTGATGCGATTAAGTGACCTTTCTACAGAAGACGACGATTACGGTCACTGTAATAATGAACCG
TTACGATAAGAAGATTGACAGTCTAATGAACGCGGTGCGTTGTCTCAAATCTGAGGTCAAGATGCAGAAA
GGTGAACGCCAAATGGCCAAAAGGTTCTGGAGGAGAGGAAGGAAGAGCTGGAGGAGGTGGCACACGAGC
TTGCAGAGACGGAGCATGAGAACACGGTCTCAGACACAACATCGAGCGTATCAAGGAGGAGAAGGACTT
CACCATGCTTCAAAGAAAACACCTCCAGCAGGAGAAGGAATGCCTCATGTCCAAACTAGTGGAGGCTGAA
ATGGATGGAGCAGCTGCTGCCAAGCAGGTATGGCCTGAAGGATACCATCGGGAAGCTGAAAACCGAGA
AACAGATGACTTGACCCGACATCAACACCTTAAACAAGGCAGAAGGAACTTCTCCTGCAGAAGCTGAGTAC
CTTTGAGGAGACCAATCGCACCTCCGAGATCTGTTGAGGGAACAGCACTGCAAAGAGGATCCGAGAGA
CTAATGGAGCAACAAGGTACATTACTGAAGCGTCTGGCAGAGGCAGACTCAGAGAAAAGCGCGCCTGCTGT
TACTACTGCAAGACAAGGACAAGGAGGTGGAAGAACTCTCCAGGAGATACAATGTGAAAAGGCTCAAGC
AAAGACAGCGTCTGAGCTTTCAAAGTCCATGGAGTCCATGCGGGGGCATTTCAGGCACAGCTTCGCTGC
AAAGAGGCTGAGAACAGTGCCTGTGCATGCAGATCAAGAACTTAGAGCGCAGTGGGAACCAAGCATAAAG
CGGAAGTAGAGGCCATCATGGAGCAGCTAAAGGAACTGAAGCAGAAGGGAGACCGAGACAAGAGCCCT
AAAGAAGGCCATCCGAGCCAGAAAAGAGCGAGCCGAGAAGAGTGAAGGAGTATGCCGAGCAGCTGCATGTG
CAACTGGCCGACAAAGACCTTTATGTTGCTGAAGCTTTATCTACTCTGGAGTCTTGAGGAGCCGTTACA
ACCAGGTTGTGAAGGACAAAGGAGATCTTGAGTTGGAGATTATCGTCCTAAATGACCGGGTGACAGATCT
TGTAACCAACAACAAGCTTGGAGGAGAAGATGCGGGAAGACCGGGACAGCTTGGTAGAGAGGCTGCAC
CGGCAGACGGCTGAGTACTCTGCATTCAAGCTAGAGAACGAGAGGCTCAAGGCTAGCTTTGCCCTATGG
AGGACAAGCTCAACCAGGCTCACTTGAGGTTTACGAGCTGAAGGCGTCAGTGAAGAACTACGAGGGGAT
GATAGACAACATAAGAGCCAGGTGATGAAAACAAGATTGGAGGCTGATGAAGTGGCTGCACAGCTAGAG
CGCTGCGACAAAGAGAACAAGATGCTTAAAGACGAGATGAACAAAGAGATCGAGGCGGCCGTCGGCAGT
TCCAGTACAGCTGGCTGACCTACAACAGCTGCCTGACATCCTCAAGATCACGGAGGCCAAGCTGGCTGA
GTGCCAAGACCAGCTGCAGGGCTACGAGAGGAAGAATCGACCTCACAGCCATCATTTTCAGACCTGCGC
AGCCGGATCGAACATCAGGGGGACAAGCTGGAGATGGCGAGAGAGAAATCAGGCTTCCAGAAGGAAA
ATAAACAGCTGAGTCAGAAGGTGGATGAACTTGAGAGGAACTGGAGGCTACCAGCGCCAGAATGTGCA
GTTCTACAGGTGATTGCCAAGAGGGAGGAGGCAATCCACCAGGCTCAGCTGCGGTTGGAGGAGAAAACG
AGGGAGTGTGGGTCATTGGCGAGGCAGTTGGAGAGTGCCATTGAAGATGCCAGGGCAGGTTGGAGCAAA
CCAAGGAACAGGCACTCTCCAAGGAACGAGCAGCCAGAGCAAAATCCTGGACCTTGAGACTCAGCTGAG
CAGGACCAAGACAGAACTTGCCAGCTGCGGCGGACTCGTGATGATGCGGATCGCAGATACCAGAGCCGC
CTGCAGGATCTGAAAGATCGCCTGGAGCAGTCTGAGAGTACCAACCGCAGCATGCAGAATTATGTCCAAT
TCTCAAGGCTCTTATGCAAATGTGTTTGGGATGCTCCCTATACATCCTCCTACCTGACGAGCTCACC
CATCCGCTCCCGATCGCCCCCTGCC

ACGCGTACGCGGCCGCTCGAGCAGAACTCATCTCAGAAGAGGATCTGGCAGCAATGATATCCTGGATT
ACAAGGATGACGACGATAAGGTTTAA

Protein Sequence:

>MR210835 protein sequence
 Red=Cloning site Green=Tags(s)

```

MKDRSSTPPLHVHVDENTPVHVHIKKLPKPSAASSQKSHKRGMGDVTNVRRSVRVKTVPWMPGKSSA
RHVGCKWENPPHCLEITPPSSEKLVSMRLSDLSTEDDSDGHCKMNRDCKIDSLMNAVGLKSEVKMQK
GERQMAKRFLEERKEELEVAHELAETEHENTVLRHNIERIKEEKDFTMLQKKHLQQEKECLMSKLVAE
MDGAAAQVMALKDTIGKLTKEKQMTCTDINTLTRQKELLQKLSFTEETNRTLRLDLREQHCKEDSER
LMEQQGTLKRLAEADSEKARLLLLLQDKDKEVEELLQEIQCEKAQAKTASELSKSMESMRGHLQAQLRC
KEAENSRLCMQIKNLSRGNQHKAEVEAIMEQLKELKQKGDGDRDKETLKKAIRAQKERAEEKSEEYAEQLHV
QLADKDLVYAEALSTLESWRSRYNQVVKDKGDLELEIIVLNDRVTDLVNQQSLEEKMRDRDSLVERLH
RQTAEYSAFKLENERLKASFAPMEDKLNQAHLEVQQLKASVKNYEGMIDNYKSQVMKTRLEADEVAAQLE
RCDKENKMLKDEMNIKIEAARRQFQSQLADLQQLPDILKITEAKLAECQDQLQGYERKNIDLTAIISDLR
SRIEHQGDKLEMAREKHQASQKQKLSQKVDLERKLEATSAQNVEFLQVIKREEAIHQQLRLEEK
RECGSLARQLESIAIEDARRQVEQTKEQALSKERAAQSKILDLETQLSRKTELGQLRRTRDDADRRYQSR
LQDLKDRLEQSESTNRSMQNYVQFLKASYANVFGDAPYTSYLTSSPIRSRPPA
  
```

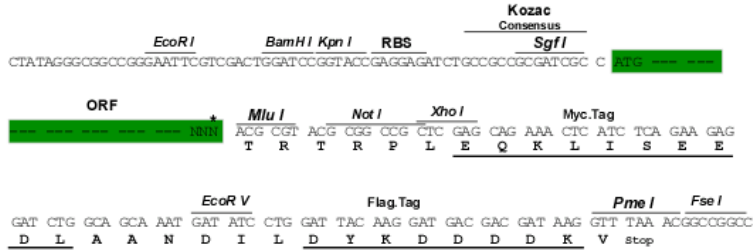
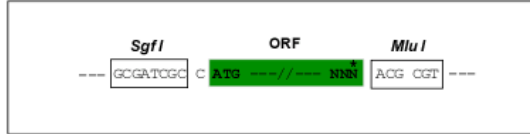
TRTRPLEQKLISEEDLAANDILDYKDDDDKV

Restriction Sites:

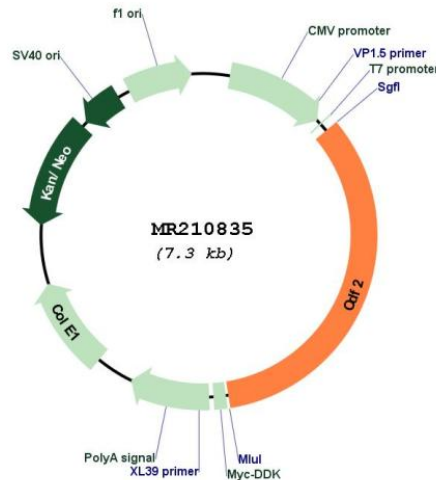
Sgfl-MluI

Cloning Scheme:

Cloning sites used for ORF Shuttling:



* The last codon before the Stop codon of the ORF

Plasmid Map:


ACCN: NM_001113213

ORF Size: 2475 bp

OTI Disclaimer: The molecular sequence of this clone aligns with the gene accession number as a point of reference only. However, individual transcript sequences of the same gene can differ through naturally occurring variations (e.g. polymorphisms), each with its own valid existence. This clone is substantially in agreement with the reference, but a complete review of all prevailing variants is recommended prior to use. [More info](#)

OTI Annotation: This clone was engineered to express the complete ORF with an expression tag. Expression varies depending on the nature of the gene.

Components: The ORF clone is ion-exchange column purified and shipped in a 2D barcoded Matrix tube containing 10ug of transfection-ready, dried plasmid DNA (reconstitute with 100 ul of water).

Reconstitution Method:

1. Centrifuge at 5,000xg for 5min.
2. Carefully open the tube and add 100ul of sterile water to dissolve the DNA.
3. Close the tube and incubate for 10 minutes at room temperature.
4. Briefly vortex the tube and then do a quick spin (less than 5000xg) to concentrate the liquid at the bottom.
5. Store the suspended plasmid at -20°C. The DNA is stable for at least one year from date of shipping when stored at -20°C.

RefSeq: [NM_001113213.1](#), [NP_001106684.1](#)

RefSeq Size: 3921 bp

RefSeq ORF: 2478 bp

Locus ID: 18286

UniProt ID: [A3KGV1](#)

Cytogenetics: 2 20.79 cM

MW: 95.4 kDa

Gene Summary: Seems to be a major component of sperm tail outer dense fibers (ODF). ODFs are filamentous structures located on the outside of the axoneme in the midpiece and principal piece of the mammalian sperm tail and may help to maintain the passive elastic structures and elastic recoil of the sperm tail. May have a modulating influence on sperm motility. Functions as a general scaffold protein that is specifically localized at the distal/subdistal appendages of mother centrioles. Component of the centrosome matrix required for the localization of PLK1 and NIN to the centrosomes. Required for the formation and/or maintenance of normal CETN1 assembly (By similarity).[UniProtKB/Swiss-Prot Function]