

Product datasheet for **MR210821**

Hells (NM_008234) Mouse Tagged ORF Clone

Product data:

Product Type:	Expression Plasmids
Product Name:	Hells (NM_008234) Mouse Tagged ORF Clone
Tag:	Myc-DDK
Symbol:	Hells
Synonyms:	A1323785; E130115I21Rik; LSH; Lysh; PASG; YFK8
Mammalian Cell Selection:	Neomycin
Vector:	pCMV6-Entry (PS100001)
E. coli Selection:	Kanamycin (25 ug/mL)



[View online »](#)

ORF Nucleotide Sequence:

>MR210821 representing NM_008234
 Red=Cloning site Blue=ORF Green=Tags(s)

TTTTGTAATACGACTCACTATAGGGCGGCCGGAATTCGTCGACTGGATCCGGTACCGAGGAGATCTGCC
 GCC**CGCATCGCC**

ATGGCCGAACAAACGGAGCCTGCGGTGATTACTCCAGCCATGCTGGAGGAGGAGGAACAGCTCGAGGCTG
 CGGGACTTGAGAAAGAGCGGAAGATGTTAGAAGAGGCTCAAAAAGTCTGGGACAGAGAGTCCACTGAAAT
 TCGGTACCGCAGACTTCAGCATTGCTTAAAAAGCAATATCTACTCAAAATTTTTGTTGACTAAAATG
 GAACAACAGCAATTGGAGGAACAGAAGAAGAAAGAGAAGTTGGAGAAAAAAAACGGTCATTAAGCTTA
 CAGAGGGTAAAAGTTTAGTTGATGGGAATGGAGAGAAACAGTCATGAAAAAGAAAAGAGGAAGAGAAGA
 TGAATCTTATAATATTTAGAGGTCATGTCAAAGAGGAAATTTGTCCGTAGCTAAAAACATAAGGAT
 AATGAGGATGAAAGCTCTCCACTACGAGTCTTTGTGTAGAAGATATTCAGAAAAATAAGGATCAATA
 GTATGATTAAGATAGATTGTCTCAAAGTGTAGGCAGAAATCTAAATCTTTTTGACCCAGTTCGGAA
 ATGTAACGGACAGCCTGTACCTTTCAACAACCAAGCATTTCACAGGAGGAGTAATGAGGTGGTACCAA
 GTAGAAGGCATGGAATGGCTTAGGATGCTTTGGGAAAATGGAATTAATGGCATTATAGCAGATGAAATGG
 GTTTGGGAAAGACTGTTCAAGTGCATTGCTACAATTGCATTGATGATTCAGAGGGGAGTACCTGGACCTTT
 TCTTGTGTTGGCCCTTTGTCTACACTTCTAACTGGATGGCTGAATTTAAAAGATTTACTCCAGAAATT
 CCTACTCTGCTGTATCATGGAACCCGGGAGGACCGTCGGAATAGTAAAGAATATCCACAAAAGACAAG
 GGACACTGCAGATTCATCCTGTGGTGGTCACATCATTGAGATCGCTATGCGAGACCAGAATGCTTTACA
 GCATTGCTATTGGAATACTTAATAGTAGATGAAGGACACAGGATTAAGAATATGAAGTGCCGGCTAATC
 AGGGAGTTAAAACGGTTCAATGCTGATAACAACTTCTTTGACTGGTACTCCCTGCAAAAACAATTTAT
 CAGAATTTGGTCATTGCTAACTTTTTGTTGCCAGATGATTTGATGACTTGAAAAGCTTTGAGCTTTG
 GTTTGATACACTAGTCTTTCTGAAACTGCTGAAGATATTATAGCTAAAGAGAGAGAACAGAATGTTTTA
 CATATGCTGCACCAGATTTTAAACGCTTTCCTACTGAGAAGACTGAAGTCTGATGTTGCTCTGAAGTCC
 CCCCTAAGCGAGAAGTAGTTGTTTATGCACCCTTTGCAATAAACAAGAGATCTTCTATACAGCTATTGT
 GAACCGCACAAATGCAACATGTTTGGATCCTGTGAGAAGGAAACAGTTGAGCTAAGTCTACTGGAAGA
 CCAAAACGACGAAGTAGAAAGTCAATAAATTACAGCGAACTAGATCAGTTCCTAGTGAATTAGAAAAAC
 TAATAAGTCAAAACAGCCAGAAGTAAACAGAGAGAGGACTGTTGTGGAAGGTAATATCCCTATAGAATC
 TGAAGTAACTGAAGCTGCGGAATATAATGATGCTACTTCGAAAGTGTGTAATCACCCATATATGATT
 GAATATCCTATTGACCCTGTACACAAGAATTTAAGATTGATGAAGAGTTGGTAACAATCTGGGAAGT
 TCTTAATTTTGGATCGAATGCTGCCGAACCTAAAAAAGAGGTCACAAGTTCTGGTGTTCACAAAT
 GACAAGCATGTTGGACATCTTGATGGATTATTGCCATCTAGAAACTTCATCTTTAGCAGACTTGATGGG
 TCCATGTCTTATTCGAAAGAGAAAAAATATATACAGTTTCAACACGGATCCAGATGTTTTCTTTTCT
 TAGTGAGTACACGAGCTGGTGGTTTAGGCATAAAGTACTGACTGCAGCAGATACAGTGTATTTATGACAG
 TGATTGGAATCCTCAGTCTGATCTCCAGGCTCAAGATAGATGTCATAGAATTGGTCAGACAAAGCCAGTT
 GTTGTGTATCGTCTTGTAACAGCAAATACTATTGACCAGAAAATTGTGGAAGAGCAGCTGCTAAAAAGAA
 AGTTGGAGAAGTTGATAATCCATAAAAAATCATTCAAAGGTGGTCAGTCTGGGTTAAGTCAATCTAAGAA
 TTTCTTAGATGCAAAGGAATTAATGGAGTTATTAATACTAGAGATTATGAAAGGGAAGTAAAAGGATCC
 AGAGAGAAGGTCATTAGTGACGAAGATCTAGAATTAAGTGTGGATCGAAGTGTCTCATTGATCAAAATGA
 AGGCTTCAAGACCAATTAAGGGGAAGACAGGGATATCAAAATACTAGAAAATCTGAAGATTCCAGTGC
 TGAATGTTTATT

ACGCGTACGCGGCCGCTCGAGCAGAACTCATCTCAGAAGAGGATCTGGCAGCAATGATATCCTGGATT
 ACAAGGATGACGACGATAAGGTTTAA

Protein Sequence: >MR210821 representing NM_008234
Red=Cloning site Green=Tags(s)

MAEQTEPAVITPAMLEEEEQLEAAGLEKERKMLEEAQKSWDRESTEIRYRRLQHLLKSNISYKFLTKM
EQQQLLEEQKKKEKLEKKRSLKLTEGKSLVDGNGEKPVMKKKRGREDESYNISEVMSKEEILSVAKKHKD
NEDESSSTSLCVEDIQKNKDSNSMIKDRLSQTVRQNSKFFFDVPVRKCNQGPVFPQPKHFTGGVMRWYQ
VEGMEWLRMLWENGINILADEMGLGKTVCIAIATMIQRGVPFPFLVCGPLSTLPNWMAEFKRFTPEI
PTLLYHGTREDRRKLVKNIHKRQGLQIHPVVVTSFEIAMRDQNALQHCVYKYLIVDEGHRIKMKCRLI
RELKRFNADNKLLLGTPLQNNLSELWSLLNLLPDVFDLKSFEWFDITSLSETAEDIIAKEREQNVL
HMLHQILTPFLLRRLKSDVALEVPPKREVVVYAPLCNKQEIFYTAIVNRTIANMFGSCEKETVELSPTGR
PKRRSRKSINYSELDQFPSELEKLSIQIQPEVNRERTVVEGNIPIESEVNLKLRNIMMLLRKCCNHPYMI
EYPIDPVTQEFKIDEELVTNSGKFLILDRMLPELKKRGHKVLFVSQMTSMLDILMDYCHLRNFIFSRLDG
SMSYSEREKNIYSFNTDPDVFLLVSTRAGGLGINLTAADTVIIYSDWNPQSDLQAQDRCHRIGQTKPV
VVYRLVTANTIDQKIVERAAAKRKLKLIHKNHFKGGQSGLSQSKNFLDAKELMELLKSRDYEREVKGK
REKVISDELELLLDLRSIDLQMKASRPKGGTGFIFKILENSEDSSAECLF

TRTRPLEQKLISEEDLAANDILDYKDDDDKV

Chromatograms: https://cdn.origene.com/chromatograms/mm9094_e01.zip

Restriction Sites: Sgfl-Mlul

Cloning Scheme:



ACCN: NM_008234

ORF Size: 2463 bp

OTI Disclaimer: The molecular sequence of this clone aligns with the gene accession number as a point of reference only. However, individual transcript sequences of the same gene can differ through naturally occurring variations (e.g. polymorphisms), each with its own valid existence. This clone is substantially in agreement with the reference, but a complete review of all prevailing variants is recommended prior to use. [More info](#)

OTI Annotation: This clone was engineered to express the complete ORF with an expression tag. Expression varies depending on the nature of the gene.

Components: The ORF clone is ion-exchange column purified and shipped in a 2D barcoded Matrix tube containing 10ug of transfection-ready, dried plasmid DNA (reconstitute with 100 ul of water).

Reconstitution Method:

1. Centrifuge at 5,000xg for 5min.
2. Carefully open the tube and add 100ul of sterile water to dissolve the DNA.
3. Close the tube and incubate for 10 minutes at room temperature.
4. Briefly vortex the tube and then do a quick spin (less than 5000xg) to concentrate the liquid at the bottom.
5. Store the suspended plasmid at -20°C. The DNA is stable for at least one year from date of shipping when stored at -20°C.

RefSeq: [NM_008234.3](#), [NP_032260.2](#)

RefSeq Size: 3039 bp

RefSeq ORF: 2466 bp

Locus ID: 15201

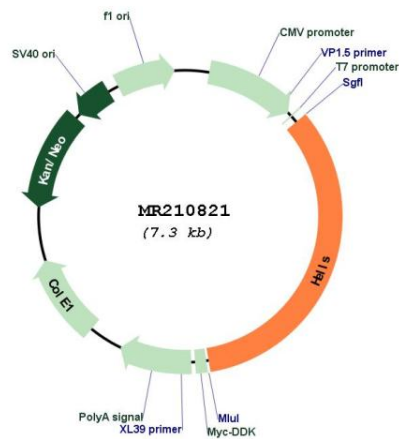
UniProt ID: [Q60848](#)

Cytogenetics: 19 C3

MW: 95.1 kDa

Gene Summary: Plays an essential role in normal development and survival. Involved in regulation of the expansion or survival of lymphoid cells. Required for de novo or maintenance DNA methylation. May control silencing of the imprinted CDKN1C gene through DNA methylation. May play a role in formation and organization of heterochromatin, implying a functional role in the regulation of transcription and mitosis.[UniProtKB/Swiss-Prot Function]

Product images:



Circular map for MR210821