

Product datasheet for **MR210801**

C2cd5 (NM_029081) Mouse Tagged ORF Clone

Product data:

Product Type:	Expression Plasmids
Product Name:	C2cd5 (NM_029081) Mouse Tagged ORF Clone
Tag:	Myc-DDK
Symbol:	C2cd5
Synonyms:	5730419I09Rik; C030008B15Rik; CDP138
Mammalian Cell Selection:	Neomycin
Vector:	pCMV6-Entry (PS100001)
E. coli Selection:	Kanamycin (25 ug/mL)



[View online »](#)

ORF Nucleotide Sequence:

>MR210801 ORF sequence
 Red=Cloning site Blue=ORF Green=Tags(s)

TTTTGTAATACGACTCACTATAGGGCGGCCGGAATTCGTCGACTGGATCCGGTACCGAGGAGATCTGCC
 GCC**CGGATCGCC**

ATGTCAGGTGAATTACAGAGAAAGATTGGCTTGAAGTCTCGAGATGAGAGGGAATGCAGTTGTTGGTT
 ACTTGCAGTGCTTGGATCTGGAGGGCAGTCTGGGTTAGTGGTCCGAGCCATAGGAACGGCGTGCCTCT
 GGATAAAGTACGAGAGCCAGCAGCGTTCCTTCCGATGCAGCTCCCATCCAGAGAACTGAAGGAGATT
 CCCTTCAATGAGGATCCCAACCCCAATACTCACTCATCAGGACCTCAACCCCTCTGAAAAACAAACTT
 ATTCCTTTTACCTTCCAAGTCTACAGTCGGCAGTCTCTTCTTCTGACACAGATTTGAGTTTGACACC
 CAAGACTGGAATGGCAGTGGGAGTGTGGAAAAGAAGGGGGACCCCTTAAAGCCCTTTACGGCAACAG
 ACGCAGTCGGCGTTGGAACAGCGGGAGTCCCCTTCTCACCTGACGGCCTTCCCCCTGGACTTCTTG
 TGCACGTCGGTGGCGTTGTCAGTGCACGCTCTGTGAAGCTTTAGATCGGATCCACAACCTGATGAACC
 AGAACTCGAGATGCATGGTGGCAGAAATCAGACAAGAGATAAAGTACATGCTAAAGCCTTAGGCTGC
 CATGCTGTAGTGGCTACAGCGAGTCAACCAGCATCTGTGAAGAAGTCTGTATTTATCAGCGTCTGGCA
 CGGCAGCTGTGCTGAACCCCTCGGTTTCTGCAGGAAGGCCTGTGGAGGGCTGTTTGAACAAGGATTGA
 AGAGAATTTACCGGTGGGCTGCGGATTCTGCCATATACCATATGATGAACTGAACATGCCGTTTCCCGCT
 CATCTCACATATTGCTATAACTGCAGGAAGCAAAAAGTCCCTGATGTTCTTCCAACTATCGATCTGC
 CCACAGACGCAGTGGTTGTTGGTAAAGTTGTCTTATTCAGGCAAGGTTATGTCGATTAAGAAAGAAAGC
 ACAGGCAGAAGCAATGCCACAGCTATCAGTAATCTTCCGCTTATGGAATATGAAGTACACACTCAA
 CTGATGAACAAGCTCAAAGTCAAAGGAATGAATGCTTTGTTGGACTGAGAATTCAGATCACAGTGGGCG
 AGACTGCTGATGGGCTTAGCGTCGGCCACAGGAGTCTACTAGCAGCCTTACCAACACCCGGTGAAT
 CCAGATTGCTGGGAAGACCCCTAATGATGGCTCCTATGAACAGCATATCTCCACATGCAGAAGGAATA
 AACGACACCATTGCAAAAAACAAGAAGTGTATGAGATCAGCCCCCGGAGGTGTCTGAGGAGATGATAG
 GATCCCCATCCAGAACCAGACAGCGCTCCAGACTTCTAAGATCACAGTCGGAAGGTTCTGATGAAGT
 TACAGAGTTAGATCTTTCACACGGGAAAAAGGATGCTTTTGTGTTAGAGATCGATGACACCGATGCCATG
 GAAGACGTGCACTCCCTCTTACTGACGCCCCACCCCTTTCAGGTTTTATAGTTGTAATACAGAAATTA
 TGCCTGGCATAAATAACTGGACATCAGAAATACAGATGTTACAGTCAGTAAGAGTGGTCCAGACTAAGTAG
 CCTCAACTTGACTAACCAAGCTCTCAATAAGAAGTCAACGGCCTATGTGAGAAGTGTCAAGAGCCTG
 TATTTCAAAGTTCGGTCCATGACCCCTGCTGCCTCTGCCATGTGAAGTTACAGTGTCTCTGCCTGAAG
 ATGAGTTAATCCAGGTCACAGTCACAGCAGTGTGAATAACTTTTGATAAAAACCGGCCTTACAGACCAC
 AAAACCCACGTTGAAAAGTCACTACAAAGAGCCTCCACAGATAACGAAGAACTGCTGCAGTCCCACTG
 GAGCTCTGCTCAGACTCACTGCCTCCTCATCTTTCCAGCAGCTAAAGAACACCTGGAGAGTGGCAACT
 CTAAGTCAAGTATACCAGCTGCACAGAGAGCTGTGACTGTTGAAAAGCAAGTGGCATGGGTGATGGAAA
 TTTCCGGAATCGCTCTGCTCCACCTTGGCAAGTCCCACAGTGGGGTGTGTAAGATGACGCCGCTTTCT
 TTCATCCCTGGAGCAAAGATAACCAAGTACCTCGGCATCATTAAAGTGTGTTTTCATTCCGGAAACCACT
 CTCTCCGCGAGGAAGCGGAGTCAAGTGGTTTTCTCCACGCTTTCATTGCTGAAGTGTGTCATGTCGAG
 AGCTCACGTGGCAGCGCTGGGCGGGAATGCTGTTGTGCTACATCATGAAGCAGTGTGCTTTCATGGAG
 AACCCCAAGTAAGAACCAGGCACAGTGTCTCATAAATGTCAGTGGGACCGGTTGGTGTGTTTTCGTGACT
 CCGACTTAGAGGTCATGTCATCTCAGCAGCCTGCTGCCAAGTCCAGCCCTCATGTACCGGAGAAGTTAC
 AACT

ACGCGTACGCGGCCGCTCGAGCAGAACTCATCTCAGAAGAGGATCTGGCAGCAATGATATCCTGGATT
 ACAAGGATGACGACGATAAGGTTTAA

Protein Sequence:

>MR210801 protein sequence
 Red=Cloning site Green=Tags(s)

```

MSGELQRKIGLKVLEMRGNAVVGYLQCFDLEGESGLVVRAIGTACTLDKLSSPAAFLPACSSPSRELKEI
PFNEDPNPNTHSSGPSTPLKNQTYSFSPSKSYSRQSSSSDLDLSTPKTGMGSGSAGKEGGPFKALLRQQ
TQSALEQREFPFLTLTAFPPGLLVHVGVSARSVKLLDRIHNPDEPETRDAWAEIRQEIKSHAKALGC
HAVVGYSESTICEEVCILSASGTAAVLNPRFLQEGTVEGCLEQRIEENLPVGC GFCHIPYDELNMPFPA
HLTYCYNCRKQKVPDVLFTTIDLPTDAVVVGKGLIQARLCRLKKAQAEANATAISNLLPFMEYEVHTQ
LMNKLKLGMMNALFGLRIQITVGETMLMGLASATGVYLAALPTPGGIQIAGKTPNDGSYEQHISHMQKRI
NDTIAKNKELYEISPPEVSEEMIGSPIPEPRQRSRLRSQSESSDEVTELDL SHGKKDAFVLEIDDDTAM
EDVHSLLDAPPSPGFYSCNTEIMPGINNWTSEIQMFTSVRVVRLSSLNL TNQALNKNFNGLCENLLKSL
YFKLRSMTPCCLCHVNFTVSLPEDELIQVTVAITFDKNQALQTTKPHVEKSLQRASTDNEELLQFPL
ELCDSLPPHPFAAKEHLESANSNGIPAAQRAVTVEKASAMGDGNFRNRSAPPASPTVGVVVKMTPLS
FIPGAKITKYLGIINMFFIRETTSLREEGVSGFLHAFIAEVFAMVRAHVAALGGNAVVSYIMKQCVFME
NPSKNQAQCLINVSGDAVVFVRSDLEVMSSQQAANCQPSTGEVTT
  
```

TRTRPLEQKLI SEEDLAANDILDYKDDDDKV

Restriction Sites:

Sgfl-MluI

Cloning Scheme:


ACCN: NM_029081

ORF Size: 2457 bp

OTI Disclaimer: The molecular sequence of this clone aligns with the gene accession number as a point of reference only. However, individual transcript sequences of the same gene can differ through naturally occurring variations (e.g. polymorphisms), each with its own valid existence. This clone is substantially in agreement with the reference, but a complete review of all prevailing variants is recommended prior to use. [More info](#)

OTI Annotation: This clone was engineered to express the complete ORF with an expression tag. Expression varies depending on the nature of the gene.

Components: The ORF clone is ion-exchange column purified and shipped in a 2D barcoded Matrix tube containing 10ug of transfection-ready, dried plasmid DNA (reconstitute with 100 ul of water).

Reconstitution Method:

1. Centrifuge at 5,000xg for 5min.
2. Carefully open the tube and add 100ul of sterile water to dissolve the DNA.
3. Close the tube and incubate for 10 minutes at room temperature.
4. Briefly vortex the tube and then do a quick spin (less than 5000xg) to concentrate the liquid at the bottom.
5. Store the suspended plasmid at -20°C. The DNA is stable for at least one year from date of shipping when stored at -20°C.

RefSeq: [NM_029081.1](#), [NP_083357.1](#)

RefSeq Size: 4388 bp

RefSeq ORF: 3051 bp

Locus ID: 74741

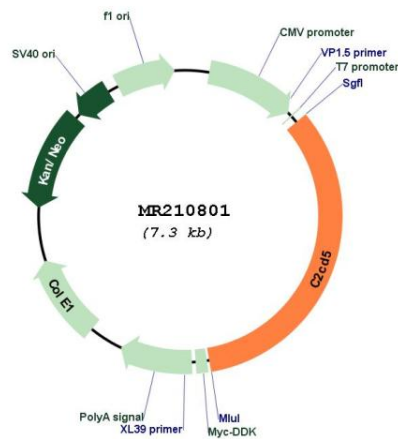
UniProt ID: [Q7TPS5](#)

Cytogenetics: 6 G3

MW: 89 kDa

Gene Summary: Required for insulin-stimulated glucose transport and glucose transporter SLC2A4/GLUT4 translocation from intracellular glucose storage vesicle (GSV) to the plasma membrane (PM) in adipocytes. Binds phospholipid membranes in a calcium-dependent manner and is necessary for the optimal membrane fusion between SLC2A4/GLUT4 GSV and the PM.[UniProtKB/Swiss-Prot Function]

Product images:



Circular map for MR210801