

Product datasheet for **MR210782**

Bcl11b (NM_021399) Mouse Tagged ORF Clone

Product data:

Product Type:	Expression Plasmids
Product Name:	Bcl11b (NM_021399) Mouse Tagged ORF Clone
Tag:	Myc-DDK
Symbol:	Bcl11b
Synonyms:	9130430L19Rik; AI604821; B630002E05Rik; BCL-11B; Ctip2; Rit1
Mammalian Cell Selection:	Neomycin
Vector:	pCMV6-Entry (PS100001)
E. coli Selection:	Kanamycin (25 ug/mL)



[View online »](#)

ORF Nucleotide Sequence:

>MR210782 ORF sequence
 Red=Cloning site Blue=ORF Green=Tags(s)

TTTTGTAATACGACTCACTATAGGGCGGCCGGGAATTCGTCGACTGGATCCGGTACCGAGGAGATCTGCC
 GCC**CGGATCGCC**

ATGTC**CCGCGCAAA**CAGGGCA**ACCCG**CAGCACTTGTCCAGAGGGA**ACTCATCACGCCAGAGGCTGACC**
 ATGTGGAGGCTACCATCCTCGAGGAAGACGAGGGTCTGGAGATAGAGGAGCCTAGCAGCCTGGGGCTGAT
 GGTGGGAGGCCCGACCTGATCTACTCACCTGTGGCCAGTGTGATGA**AACTCCCGCTGGGGACATC**
 CTGGTTTTTATAGAGCACAAGAAGAAACAGTGTGGAGGCTGGGCCCTGCTACGACAAGGTCTGGACA
 AGAGCAGTCCACCTCCCTCCTCTCGCTCTGAGCTCAGGAGAGTATCTGAGCCAGTGGAGATCGGGATCCA
 GGTCACCCCTGATGAAGATGACCACCTACTGTCACCCACGAAAGGCATCTGTCCCAAGCAGGAGA**ACATT**
 GCAGGTAAGATGAGCCTTCCAGCTACATTTGCACAACATGCAAGCAGCCCTTCAACAGCGCCTGGTTCC
 TGCTGCAGCACGCACAGAACACGCATGGCTTCCGAATCTACCTGGAGCCTGGGCCGGCCAGCACCTCGCT
 CAGCCCAGGCTCACCATCCCGCCACCCTCGGGCCGGAGACCGTGGCGCAGTCCC**ACTCATGAATTC**
 CTGGGGGACAGCAATCCTTTCAACCTGCTGCGCATGACGGGCCCATCCTGCGGGACCACCTGGCTTCG
 GTGAGGGCCGCTTGCAGGTACGCCACCCTCTT**CAGCCACC**CGCCACGCCATCACTTGGACCCACACCG
 CCTCAGTGCAGAGGAGATGGGGCTCGTGGCCAGCACCCAGTGCCTTCGACCGAGT**CATGCGCCTGAAC**
 CCCATGGCCATAGACTCTCCTGCCATGGACTTCTCCCGCGGGTGC**GAGA**ACTGGCCGGCAACAGCTCCA
 CGCCGCGCCCGTGTCCCGAGCCGTGGCAACCCATGACACCGGCTGCTGAACCC**TTCCAGCCAGTCC**
 CAAGTCCCGTTCCTCAGCACGCCACCCTGCCACCCATGCCTGCGGGCACACCGCCACC**CGACCCGCT**
 GCCAAGAGCAAGTCTGTGAGTCTGCGGAAGACCTTCAAGTCCAGAGCAATCTATCGTGCACCGGC
 GCAGCCACAGGGCGAGAAGCCCTACAAGTGCAGCTGTGCACCATGCGTGC**TGCAGCCGAGCAAGCT**
 CAAGCGCCACATGAAGACGCACATGCACAAGCGGGCTCTCTGGCTGGCCGCTCAGACGACGGGCTCTCA
 GCTGCCAGTCCCTGAGCCGGGACACGAGCTGCCAGGTGACCTGAAAGCGGCCGATGGCGACTTCC
 GCCACCATGAGAGCGACCCATCTCTGGGCCCGAGCCTGAGGACGACGAGGACGAGGAGGAGGAAGAAGA
 GGAGCTGCTGCTGGAGAACGAGAGCCGGCTGAGTCGAGCTT**CAGCATGGACTCGGAGCTGGCCGCTGGC**
 CGCGAGAACGGAGGTGGTGTGCCACCGGGGTGGCGGGCGAGGGCTGCAGCTGCGGCTCTGGCGGATG
 AGAAGGCTCTGGCCCTGGGCAAGGTGATGGAGGACGACGGCTGGCGCACTGCCGAGTATGGGGAGAA
 GCGGGGCGCTTCTGAAGCGTGCAGGGCACACGGGTGATGCCGGAGCTGTTGGCTGTGGGGACCGGGT
 GCACCGGCTGCAGTGAACGGGCGCGCGGGCTTTCGCGCCAGGCGCAGAGCCCTTCCAGCTCTCTTCC
 CACGCAAGCCAGCACCGCTGCCAGCCCTGGGCTCGGTGGTCCCGCGCTGCACCGGCCAAGCGCATCAA
 GGTGGAGAAAGACCTGGAGCTGCCACCTGCCGCCCTATCCCATCTGAGAACGTGTA**CTCGCAGTGGCTC**
 GTGGGCTACGCAGCATCGCGCCACTTCA**TGAAGGACCCATTCTGGGCTT**CACGGATGCGCGCCAGT**CGC**
 CTTTCGCCACATCGTCGGAACATTCCTCTGAGAACGGCAGCCTGCGCTTCTCAACGCCACCCGGGACCT
 GCTGGACGGCGGGCTGTCCGGGCGCAGTGGCACGGCGAGCGGGGCGAGCACACCTCACCTGGGTGGTCCG
 GGTCTGGGAGGCCGAGCTCAAAGGAGGGCCCGCCAGCGACACATGTGAGTACTGCGGCAAGGTCTTCA
 AGAACTGTAGCAACCTGACGGTGCACCGGAGGACCCACACCGGCGAGCGGCTTACAAGTGCAGCTGTG
 CAACTACGCGTGTGCGCAGAGCAGCAAGCTCACGCGCCACATGAAGACGCACGGGCAGATCGGCAAGGAG
 GTGTACCCTGCGACATCTGCCAGATGCCCTT**CAGCGTCTACAGCACCC**TGGAGAAACACATGAAAAAGT
 GGCACGGTGAACACTTGCTGACTAATGATGTCAA**AATCGAGCAGGCTGAGAGGAGC**

AG**CGGACCG**ACGCGTACGCGCCGCTCGAGCAGAA**ACTCATCTCAGAAGAGGATCTGGCAGCAAATGATATCC**
 TGGATTACAAGGATGACGACGATAAGGTTTAA

Protein Sequence:

>MR210782 protein sequence

Red=Cloning site Green=Tags(s)

```

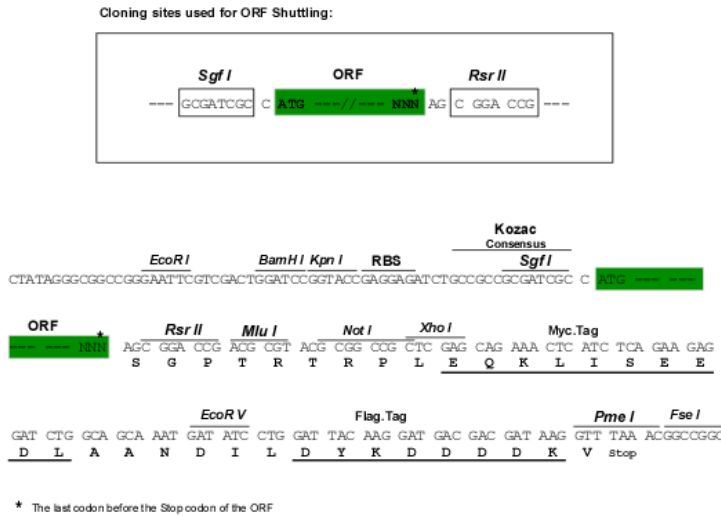
MSRRKQGNPQHLSQRELITPEADHVEATILEEDEGLEIEEPSSLGLMVGGPDPDLLTCGQCQMNFLGDI
LVFIEHKKKQCGGLGPCYDKVLDKSSPPSSRSELRRVSEPVEIGIQVTPDEDDHLLSPTKGICPKQENI
AGKDEPSSYICTTCKQPFNSAWFLLQHAQNTGFIYLEPGPASTSLTPRLTIPPLGPETVAQSPLMNF
LGDSNPFNLLRMTGPILRDHPGFGEGRLPGTPPLFSPPPRHLDPHRLSAEEMGLVAQHPSAFDRVMRLN
PMAIDSPAMDFSRRRLRELAGNSSTPPVSPGRGNPMHRLLNPFQSPKSPFLSTPPLPPMPAGTPPPQPP
AKSKSCEF CGKTFKFQSNLIVHRRSHTGEKPYKCQLCDHACSQASKLKRHMKTHMHKAGSLAGRSDDGLS
AASSPEPGTSELPGDLKAADGDFRHESDPSLGPEPEDEDEEEEEELLENESRPESFSMDSELGRG
RENGGGVPPGVAGAGAAAAALADEKALALGKVMEDAGLGALPQYGEKRGAFKCRAGDTGDAGAVGCGDAG
APGAVNGRGGAFAPGAEPFALFPRKPAPLSPGLGGPALHAAKRIKVEKDLELPPAALIPSENVYSQWL
VGYAASRHFMDPFLGF TDARQSPFATSSSEHSENGSLRFSTPPGDLLDGGLSGRSGTASGGSTPHLGGP
GPGRPSSKEGRRSDTCEYCGKVFKNCSNLTVHRRSHTGERPYKCELCNYACAQSSKLTRHMKTHGQIGKE
VYRCDICQMPFSVYSTLEKHMKKWHGEHLLTNDVKIEQAERS
  
```

SGPTRTRPLEQKLI SEEDLAANDILDYKDDDDKV

Restriction Sites:

SgfI-RsrII

Cloning Scheme:



ACCN: NM_021399

ORF Size: 2439 bp

OTI Disclaimer: The molecular sequence of this clone aligns with the gene accession number as a point of reference only. However, individual transcript sequences of the same gene can differ through naturally occurring variations (e.g. polymorphisms), each with its own valid existence. This clone is substantially in agreement with the reference, but a complete review of all prevailing variants is recommended prior to use. [More info](#)

OTI Annotation: This clone was engineered to express the complete ORF with an expression tag. Expression varies depending on the nature of the gene.

Components: The ORF clone is ion-exchange column purified and shipped in a 2D barcoded Matrix tube containing 10ug of transfection-ready, dried plasmid DNA (reconstitute with 100 ul of water).

Reconstitution Method:

1. Centrifuge at 5,000xg for 5min.
2. Carefully open the tube and add 100ul of sterile water to dissolve the DNA.
3. Close the tube and incubate for 10 minutes at room temperature.
4. Briefly vortex the tube and then do a quick spin (less than 5000xg) to concentrate the liquid at the bottom.
5. Store the suspended plasmid at -20°C. The DNA is stable for at least one year from date of shipping when stored at -20°C.

RefSeq: [NM_021399.2](#), [NP_067374.2](#)

RefSeq Size: 7707 bp

RefSeq ORF: 2439 bp

Locus ID: 58208

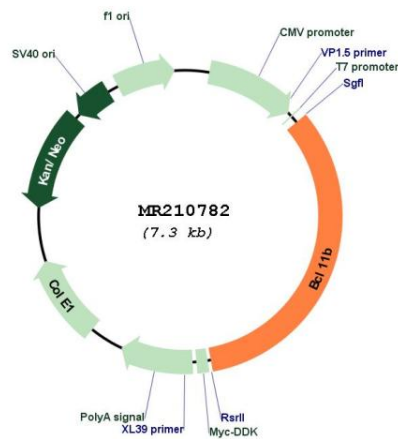
UniProt ID: [Q99PV8](#)

Cytogenetics: 12 59.1 cM

MW: 87.3 kDa

Gene Summary: Key regulator of both differentiation and survival of T-lymphocytes during thymocyte development in mammals (PubMed:12717433). Essential in controlling the responsiveness of hematopoietic stem cells to chemotactic signals by modulating the expression of receptors CCR7 and CCR9, which direct the movement of progenitor cells from the bone marrow to the thymus (By similarity). Is a regulator of IL2 promoter and enhances IL2 expression in activated CD4(+) T-lymphocytes (PubMed:16809611). Tumor-suppressor protein involved in T-cell lymphomas. May function on the P53-signaling pathway. Repress transcription through direct, TFCOUP2-independent binding to a GC-rich response element.[UniProtKB/Swiss-Prot Function]

Product images:



Circular map for MR210782