

Product datasheet for **MR210703**

Agtppb1 (BC060633) Mouse Tagged ORF Clone

Product data:

Product Type:	Expression Plasmids
Product Name:	Agtppb1 (BC060633) Mouse Tagged ORF Clone
Tag:	Myc-DDK
Symbol:	Agtppb1
Synonyms:	Nna1, 4930445M19Rik, 1700020N17Rik
Mammalian Cell Selection:	Neomycin
Vector:	pCMV6-Entry (PS100001)
E. coli Selection:	Kanamycin (25 ug/mL)



[View online »](#)

ORF Nucleotide Sequence:

>MR210703 representing BC060633
 Red=Cloning site Blue=ORF Green=Tags(s)

TTTTGTAATACGACTCACTATAGGGCGGCCGGAATTCGTCGACTGGATCCGGTACCGAGGAGATCTGCC
 GCC**CGCATCGCC**

ATGAGCAAGCTAAAAGTGGTGGGAGAGAAAAGCCTTACCAATAGTTCTCGGGTTGTGGGACTCCTGGCTC
 AGCTGGAGAAGATCAATACGGATTCCACAGAGTCAGATACTGCCAGATATGTTACATCCAAAATTCTTCA
 TTTGGCTCAAAGTCAAGAAAAACAAGAAGGAAATGACAACCAAAGTTCTACAGGCATGGAAGTTCTG
 TTGTCAACATTGGAGAACACGAAAGATCTTCAGACTGTACTTAATATCCTAAGCATTCTCATTGAGCTGG
 TGTTCATCGGGTGGGGTGAAGAGCGAGTTTCTTAGTTGCCAAAGGTGGTTCACAAACTGTGCAACT
 GCTTATGAATGCCAGCAAAGACTCTCCTCCACATGAGGAGGTGATGGTGCAGACTCACTCCATTCTTGCC
 AAGATTGGGCCAAAAGATAAGAAATTTGGAGTGAAGCTCGAGTTAACGGGGCACTGACTGTGACTCTGA
 ACTTGGTAAAGCAGCACTTTCAGAACTACCGCTTGGTTCTTCTTGTCTTCAGCTCTTGGCAGTCTATTC
 TACCAACTCTGTGAAGTCACTATCTTTAGGTAATAATGGAGTTGTGGAGTTGATGTTAAAAATCATTGGG
 CCATTCAGTAAGAAGAATTCGGGTCTCATGAAGTTGCTTTAGACTCTTGGCTGCATTGCTAAAAATCAA
 AGACAAACGCCAGGAGAGCGGTGGACAGAGGGTACGTTCAAGTGCTTCTAACCATCTATGTAGATTGGCA
 CCGCATGATAATCGGCATAGAAACATGCTCATTCCGGAAGGGGATTCTACAGAGCTTAAAAAGTGTACAG
 AACATCAAGTTGGGCAGAAAAGCATTATTTGATGCGAATGGGATGAAAATTTCTGTATAACACTTCTCAAG
 AGTGCTTGGCGGTGAGGACTCTTGATCCTCTTGTCAACACATCCAGTCTGATAATGAGAAAATGCTTCCC
 CAAAACCGCCTCCCGTCCCCACCATTAAGTTCTTTCCACTTCCAATTGCCAATTATCCCTGTGACT
 GGACCTGTGGCCAGCTCTACAGCTTCCCGCTGAAGTGGACGATGTGGTGGACGAGAGTACGACACAACG
 ACGACATTGATTTAGAAGCGGAAAATGAACTCGAGAATGAAGATGACCTAGATCAGAGTTTTAAGAATGA
 TGATATTGAAACAGATATTAATAAATTAAGACCTCAGCAAGTACCAGGACGAACAATAGAAGAAGTAAAA
 ATGTACGAGCACCTTTTCCCGAGCTTGTGATGATTTTCAGGACTATGAACTGATCTCTAAGGAACCCA
 AACCTTTTGTGTTTGGGGGAAGGCTCGGGGCCCATTTAGTTCCACAGCTGGAGAGGAGGTACCTGG
 GAATTCAGGGAGCGTAAAGAAAGGAGTGGTAATGAAGGAGAGAGCAAGTCTAAAGGAGAGGAAGCCAAG
 GAAGACCTAAGGGCCACGACAGGACACTGCCGACGAGCTGGTGGCCAGAGCAGAGTGGCCCCCTCAG
 CCCACAGCTTCAACAATGATCTTGTGAAGGCCCTAGACCGAATCACACTGCAGAATGTTCTTCCGAAGT
 AGCCTCGGGCTTGAACGCAGGAATGAGGAAGGACTTTGGTCTCCCTCTCACTGTCCTCTCATGCACGAAA
 GCTTGTCTCACGTGGCTAAGTGTGGAAGTACTCTTTTGAAGGGCGGACGGTACATCTTGGGAAGCTGT
 GTTGTACTGGAGTTGAAACGGAAGATGACGAAGCACTGAGTCCCACTCATCAACAGAGCAGGCCCCCTC
 TGTTGAAGCCTCTGATGGACCAACTGCACGACCCAGACCTCTATATTGAGATTGTGAAAAATACGAAG
 TCCGTTCCAGAATACTCAGAGGTGGCTTATCCTGATTATTTTGGTACATTCCACCTCCCTTCAAAGAGC
 CTATTTTAGAAAGGCCTTATGGTGTACAAAGGACAAAAATGGCCAAGACATCGAGAGGCTGATACACCA
 GAACGATATCATAGACCGCGTGGTGTATGACTTAGACAACCTACCTATACCACTCCAGAAGAAGGAGAT
 ACTTTGAAGTTAACTCAAATTCGAATCTGGGAATCTGCGCAAAGTAATTCAAATTAGAAAAAGCGAGT
 ACGACCTTATCCTGAAGTCTGATATAAACAGTAACCATTACCACAGTGGTCTACTTTGAAGTCAAGTGG
 GATGCGGCCTGGTGTGGCATATAGTTTCAACATCATCAACTGTGAGAAGTCCAACAGTCAAGTTAATTAT
 GAAATCACTTCTCAGAAAGCTCAGTTGCCGACGGGACAGAAAGGCAAGTCTACTACACCATCACCTT
 CACCG

ACGCGTACGCGGCCGCTCGAGCAGAAACTCATCTCAGAAGAGGATCTGGCAGCAAATGATATCCTGGATT
 ACAAGGATGACGACGATAAGGTTTAA

Protein Sequence: >MR210703 representing BC060633
Red=Cloning site Green=Tags(s)

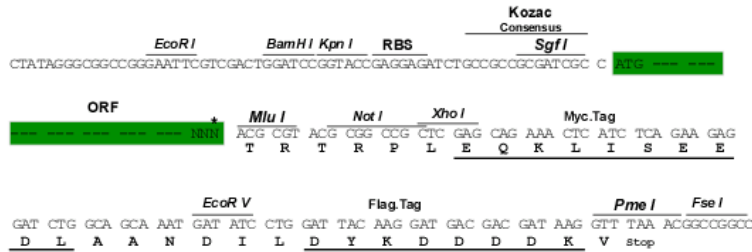
MSKLVVGEKSLTNSRVVGLLAQLEKINTDSTESDTARYVTSKILHLAQSQEKTREMTTKGSTGMEVL
LSTLENTKDLQTVLNILSILIELVSSGGRRASFLVAKGGSQILLQLLMNASKDSPHEEVMVQTHSILA
KIGPKDKKFGVKARVNGALTVTLNLVKQHFQNYRLVLPCLQLLRVYSTNSVNSVSLGKNGVVELMFKIIG
PFSKNSGLMKVALDTLAALLKSKTNARRAVDRGYVQVLLTIYVDWHRHDNRHRNMLIRKGILQSLKSVT
NIKLGRKAFIDANGMKILYNYSQECLAVRTLDPVNTSSLIIMRKCFCPNRPLPTIKSSFHFQLPIIPVT
GPVAQLYSLPPEVDDVVDESDDNDDIDLEAENELENEDDLQSFKNDDIETDINKLRPQQVPGRTIEELK
MYEHLFPELVDDFQDYELISKEPKPFVFEKGARGPIVVPTAGEEVPNGSGSVKKGVMKERASPKGEEAK
EDPKGHDRTLPPQLGGQSRVAPSAHSFNNDLVKALDRITLQNVPSQVASGLNAGMRKDFGLPLTVLSCTK
ACPHVAKCGSTLFEGRVHLGKLCCTGVETEDEDTEHSSTEQAPSVEASDGPTLHDPDLYIEIVKNTK
SVPEYSEVAYPDYFGHIPPPFKEPILERPVGVRTKIAQDIERLIHQNDIIDRVVYDLNPTTYTTPEEGD
TLKFNSKFESGNLRKVIQIRKSEYDLILNSDINSNHYHQWFYFEVSGMRPGVAYRFNIINCEKSNSQFN
EITSHEAQLPQADRRASPTTPSPSP

TRTRPLEQKLISEEDLAANDILDYKDDDDKV

Restriction Sites: Sgfl-MluI

Cloning Scheme:

Cloning sites used for ORF Shuttling:



* The last codon before the Stop codon of the ORF

ACCN: BC060633

ORF Size: 2385 bp

OTI Disclaimer: The molecular sequence of this clone aligns with the gene accession number as a point of reference only. However, individual transcript sequences of the same gene can differ through naturally occurring variations (e.g. polymorphisms), each with its own valid existence. This clone is substantially in agreement with the reference, but a complete review of all prevailing variants is recommended prior to use. [More info](#)
OTI Annotation: This clone was engineered to express the complete ORF with an expression tag. Expression varies depending on the nature of the gene.

Components: The ORF clone is ion-exchange column purified and shipped in a 2D barcoded Matrix tube containing 10ug of transfection-ready, dried plasmid DNA (reconstitute with 100 ul of water).

Reconstitution Method:

1. Centrifuge at 5,000xg for 5min.
2. Carefully open the tube and add 100ul of sterile water to dissolve the DNA.
3. Close the tube and incubate for 10 minutes at room temperature.
4. Briefly vortex the tube and then do a quick spin (less than 5000xg) to concentrate the liquid at the bottom.
5. Store the suspended plasmid at -20°C. The DNA is stable for at least one year from date of shipping when stored at -20°C.

RefSeq: [BC060633](#)

RefSeq Size: 4585 bp

RefSeq ORF: 2387 bp

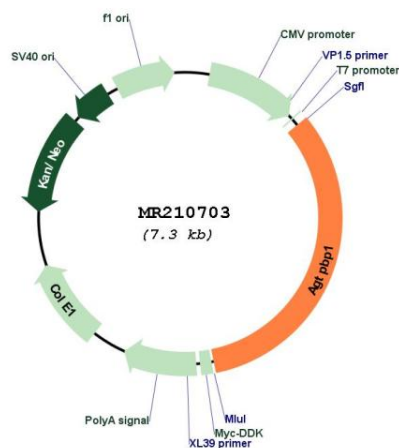
Locus ID: 67269

Cytogenetics: 13

MW: 168.1 kDa

Gene Summary: Metalloprotease that mediates deglutamylation of target proteins. Catalyzes the deglutamylation of polyglutamate side chains generated by post-translational polyglutamylation in proteins such as tubulins. Also removes gene-encoded polyglutamates from the carboxy-terminus of target proteins such as MYLK. Acts as a long-chain deglutamylase and specifically shortens long polyglutamate chains, while it is not able to remove the branching point glutamate, a process catalyzed by AGL5/CCP5. Deglutamylation plays a key role in cerebellar Purkinje cell differentiation, accumulation of tubulin polyglutamylation causing neurodegeneration.[UniProtKB/Swiss-Prot Function]

Product images:



Circular map for MR210703