

Product datasheet for MR210693L4

Furin (NM_001081454) Mouse Tagged Lenti ORF Clone

Product data:

Product Type:	Expression Plasmids
Product Name:	Furin (NM_001081454) Mouse Tagged Lenti ORF Clone
Tag:	mGFP
Symbol:	Furin
Synonyms:	9130404I01Rik; Fu; Fur; PA; PACE; Pcs; Pcsk3; SP; SPC1
Mammalian Cell Selection:	Puromycin
Vector:	pLenti-C-mGFP-P2A-Puro (PS100093)
E. coli Selection:	Chloramphenicol (34 ug/mL)
ORF Nucleotide Sequence:	The ORF insert of this clone is exactly the same as(MR210693).
Restriction Sites:	SgfI-MluI
Cloning Scheme:	

Cloning sites used for ORF Shuttling:



* The last codon before the Stop codon of the ORF.

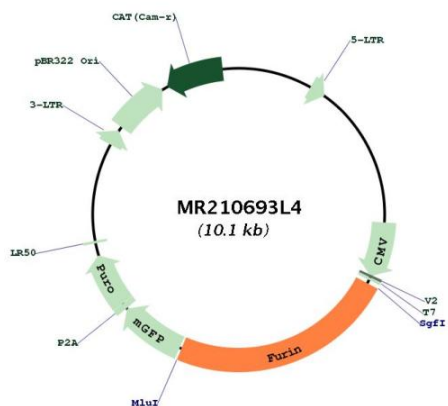
ACCN:	NM_001081454
ORF Size:	2379 bp



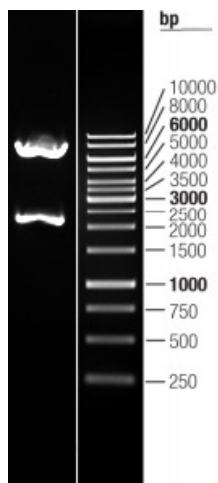
[View online »](#)

OTI Disclaimer:	The molecular sequence of this clone aligns with the gene accession number as a point of reference only. However, individual transcript sequences of the same gene can differ through naturally occurring variations (e.g. polymorphisms), each with its own valid existence. This clone is substantially in agreement with the reference, but a complete review of all prevailing variants is recommended prior to use. More info
OTI Annotation:	This clone was engineered to express the complete ORF with an expression tag. Expression varies depending on the nature of the gene.
Components:	The ORF clone is ion-exchange column purified and shipped in a 2D barcoded Matrix tube containing 10ug of transfection-ready, dried plasmid DNA (reconstitute with 100 ul of water).
Reconstitution Method:	<ol style="list-style-type: none">1. Centrifuge at 5,000xg for 5min.2. Carefully open the tube and add 100ul of sterile water to dissolve the DNA.3. Close the tube and incubate for 10 minutes at room temperature.4. Briefly vortex the tube and then do a quick spin (less than 5000xg) to concentrate the liquid at the bottom.5. Store the suspended plasmid at -20°C. The DNA is stable for at least one year from date of shipping when stored at -20°C.
RefSeq:	NM_001081454.1
RefSeq Size:	4166 bp
RefSeq ORF:	2382 bp
Locus ID:	18550
UniProt ID:	P23188
Cytogenetics:	7 45.65 cM
Gene Summary:	This gene encodes a calcium-dependent serine endoprotease that proteolytically activates different proprotein substrates traversing the secretory pathway. The encoded protein undergoes proteolytic autoactivation during which an N-terminal propeptide is cleaved to generate the mature protein. Mice lacking the encoded protein die at an embryonic stage and display hemodynamic insufficiency, cardiac ventral closure defect, axial rotation defect and abnormal yolk sac vasculature. Alternative splicing results in multiple transcript variants. [provided by RefSeq, Jul 2015]

Product images:



Circular map for MR210693L4



Double digestion of MR210693L4 using SgfI and MluI