

Product datasheet for **MR210684**

Zc3h11a (BC066163) Mouse Tagged ORF Clone

Product data:

Product Type:	Expression Plasmids
Product Name:	Zc3h11a (BC066163) Mouse Tagged ORF Clone
Tag:	Myc-DDK
Symbol:	Zc3h11a
Synonyms:	mKIAA0663, Zc3hdc11a
Mammalian Cell Selection:	Neomycin
Vector:	pCMV6-Entry (PS100001)
E. coli Selection:	Kanamycin (25 ug/mL)



[View online »](#)

ORF Nucleotide Sequence:

>MR210684 representing BC066163
 Red=Cloning site Blue=ORF Green=Tags(s)

TTTTGTAATACGACTCACTATAGGGCGGCCGGGAATTCGTCGACTGGATCCGGTACCGAGGAGATCTGCC
 GCC**CGCATCGCC**

ATGCCTAATCAGGGAGAAGACTGCTATTTTTATTCTATTCTACATGCGCCAAAGGTGACAGCTGCCCAT
 TCCGTCACCTGTGAAGCTGCACTAGGAAATGAAACTGTTTGCACACTATGGCAAGAAGTCGTTGTTTTCG
 ACAGGTGTGCAGATTTTCGTACATGGAATGACAAAAACGAAGTGAATTCCTTGTTATTGGGAAAAT
 CAGCCAGTGGGATGTCAAAAATAAACTGCGCTTCCATCACACCAGAAGCCGCTATGTTGATGGACTCT
 TCCTACCTCCAAGCAAACTGTGTTACCCACTGTGCTGAGTACAAGAAGAAGAAGTAAAGACTAGCCA
 GCTCACAGTTCACAGAGCAAATGTCTGTTCACTAACCCCTCCCCTCAGCTGCGGAGTGAATGAAA
 GTAGAGAGCTCAGAAAACGTTCCAGCCCCACACATCCGCCTGTTGTAATCAACGCTGCAGATGATGATG
 AAGATGACGATGATCAGTTTTCTGAGGAGGTGATGAAAGCAAGACACCTGCCCTGCAGCCATCTCTGA
 CGTCCATAATGGATTACGAGTGGCTTCTGCCCGCAAACCTGGAGTCAGTTAAAGCAAGGTGAATGTTTG
 AATTTTGGAAATAAGACTCTTGAGGAAATTAATCAAAGAAAATGAAGGAAAAATCCAAGAAGCAAGGTG
 AAGGCTCCTCGGGAGTTCCAGTGTTCACAGCAGCCTCAGCCCAATCCAGGCCCTGAGAAGGAGAATGT
 TCGGACTGTGGTGAAGTGGTACTCTATCCAGCAAACCAAGAGCCCTTGTTAGACTGAGTCTTTCT
 GAGAGACTGGGAAAACGAAAACCTTTCAGTGGTGGTGAATGAGTACCCTCCATTAAGCGAAGCCTTGAC
 AGAGGCTGGGAAAAAAGTGAATCGCCAGAACTAACATTGATAAAGCACCAAGAAAGAGCGAGGTCA
 TAAAGCTGGGAGATCCATGTGAAGACTGGAAGAAATCTTCTTGAAGAGCCAGTCAGAAACGTGGA
 GAATTGCAAAACCAACTGAAGGCAGAAGAACCTCAGGAGCCGATGATTTCCATCAGGGACAAAAAGTT
 CTTCTTCAGTGGGATCAAAACCTTCTCTGAGGTCCTGGCTGAAAAGAAACACCGCAGCAGGAAATGGA
 AAGACAGAAATCCAAAAAGGATACAAGTTGCCTCACGCTAACAGACGACACTGAAATGAAAAAGCAGTG
 AGTCTGCCACTGTTGCTGTTAGCAAAGGACAACCAAGAGGAGCCTGCAGGAAGAGCCAGGTCTATGCAGG
 AGGTGCATATTAAGACTAGAGGAAATTAAGCTGGAGAAGGCCCTGAGGGTGCAGCAAAGCTCTGAGAG
 TAGTGGCAACTCCGACCTCAAGCTGAGGCTGCCCGAGGACAAAGAGGCTGCTCCGCATACCAAGAGA
 GCAGGTGTAAAAGAAGAGAAAAATGTGGCCTTGAAGACAGTGGTACCCTCCTCAGAGCAGTGTGACTA
 AGATGGAGGCTAATGAGACTTCAGATGAGACCATAAGTATCCCACAAAACCTGCAGTCAACAGATGTGA
 CACTGTCAAAGAGAAAACACACAGAGACTGCAGGAGAGAGGAGCATCACAAAAGGAGAAGGCAGCCTTG
 TCATCTGTGCGAGGAGATGAGGCTTCTTCTATACCCGAGTGGCGGGAAAGCCGGTCTACTGCTGTAT
 CAGGCGTCACTCGGCATCTGGCAAAACGGCTCCCGTGGAGTCATCCAGAAAGGGGAGGTAGAAACCTC
 CGGAATCGGGACTCAATACTGAATGTGAAATGCGCAGCACAGACTTTGGAGAAGAGGAGTAAAGTCAAA
 CCCAAAGTAAATGTGAAGCCATCTGTGGTCAAGGTTGTCTCAGCTCCCAAATTGGCTCCCAAACGCAAGG
 CTGTGGAGATGCACTCTGCCGTATCGCAGCCGTGAAGCCGCTCAGCTCCAGCAGTGTCTGCAGGAAAAG
 CCCCAAGAAAGCAGCTGTGGCTGTTGTCCACTCCTCTCTGAGGATAAACCCGTACCATGTCTGAG
 ACAGAAAACCAAAAGACAGTTCGTGTCTCAGCCCAAGCTGCTTCGGAACCCTTGCTCCCGGAAG
 GCTCTGGCCCTTCTCATCCAGACGGCAACAAAACCGCCGGCTGAGCTCCGCCTCCAGGGAAAGCC
 TCCACTCTGTGGAAGATGATTTTGAAGAACTAATATGGGAAATTTAGGGGGCAAATTTGAAGCTGAG
 ATCGACTTGGATCCTGGGAAGGATGAAGATGACCTTCTGCTTGAAGCTCTCAGAGATGATTGACAGC

ACGCGTACGCGGCCGCTCGAGCAGAACTCATCTCAGAAGAGGATCTGGCAGCAAATGATATCCTGGATT
 ACAAGGATGACGACGATAAGGTTAA

Protein Sequence: >MR210684 representing BC066163
 Red=Cloning site Green=Tags(s)

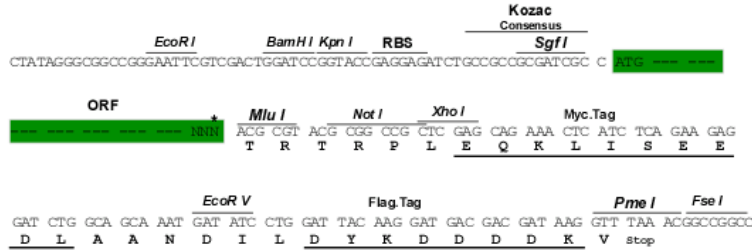
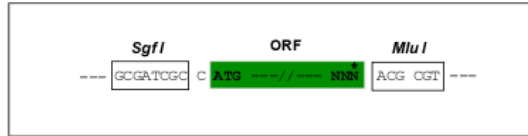
MPNQGEDCYFYFYSTCAKGDSCPFHCEAALGNETVCTLWQEGRCFRQVCRFRHMEIDKKRSEIPCYWEN
 QPVGCKLNCFAHHTSRYYVDGLFLPPSKTVLPTVPESQEEVKTSQLTVQSKLSVQSNPSPQLRSVMK
 VESSENVPSPTHPPVINAADDEDDDDQFSEEGDESKTPALQSPDVHNGLRVASARKPGVSLKQGECL
 NFGIKTLEEIKSKMKEKSKKQEGEGSSGVSSVLQQPQPNGPEKENVRTVVRMVTLSKPEEPLVRLSLS
 ERLGKRKLSVGGSDPPLKRSLAQLGKKVESPETNIDKAPKKERGHKAGEIHVKTLLEEILLERASQKRG
 ELQTKLKAEEPSGADDSPTGKSSSSVRIKTFSEVLAEKKHRQQEMERQKSKKDTSCLTLDTEMKKT
 SLPTVAVSKGQPEEPAGRARMQEVHIKTLLEEIKLEKALRVQSSSESSGNSRPQAEAAPGTRLLRITKR
 AGVKKEKCKGLEDSGDPQSSVTKMEANETSDETISDPTKLAVNRCDTVKEKHTQRLQERGASQKEKAAL
 SSVRGDEASSYTRVAGKPVLTAVSGVTRHLAKRPLVSSQKGEVETSGIGDSILNVKCAAQTLEKRSKVK
 PKVNVKPSVVKVVSAPKLAPKRKAVEMHSAVIAAVKPLSSSSVLQESPTKKAAVAVVPLLSEDKPVTMSE
 TENPKDSSVLSAQAASEPLLPEGSGPSSQTATKPRRLSSASTGKPLSVEDDFEKLWEISGGKLEAE
 IDLDPGKDEDDLLELSEMIDS

TRTRPLEQKLISEEDLAANDILDYKDDDDKV

Restriction Sites: Sgfl-MluI

Cloning Scheme:

Cloning sites used for ORF Shuttling:



* The last codon before the Stop codon of the ORF

ACCN: BC066163

ORF Size: 2376 bp

OTI Disclaimer: The molecular sequence of this clone aligns with the gene accession number as a point of reference only. However, individual transcript sequences of the same gene can differ through naturally occurring variations (e.g. polymorphisms), each with its own valid existence. This clone is substantially in agreement with the reference, but a complete review of all prevailing variants is recommended prior to use. [More info](#)
OTI Annotation: This clone was engineered to express the complete ORF with an expression tag. Expression varies depending on the nature of the gene.

Components: The ORF clone is ion-exchange column purified and shipped in a 2D barcoded Matrix tube containing 10ug of transfection-ready, dried plasmid DNA (reconstitute with 100 ul of water).

Reconstitution Method:

1. Centrifuge at 5,000xg for 5min.
2. Carefully open the tube and add 100ul of sterile water to dissolve the DNA.
3. Close the tube and incubate for 10 minutes at room temperature.
4. Briefly vortex the tube and then do a quick spin (less than 5000xg) to concentrate the liquid at the bottom.
5. Store the suspended plasmid at -20°C. The DNA is stable for at least one year from date of shipping when stored at -20°C.

RefSeq: [BC066163.1](#)

RefSeq Size: 2815 bp

RefSeq ORF: 2378 bp

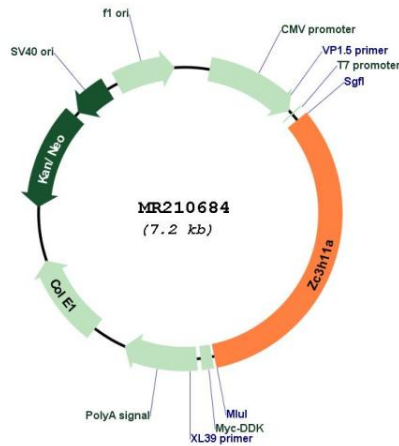
Locus ID: 70579

Cytogenetics: 1 E4

MW: 103.2 kDa

Gene Summary: Involved in nuclear mRNA export; probably mediated by association with the TREX complex. [UniProtKB/Swiss-Prot Function]

Product images:



Circular map for MR210684