

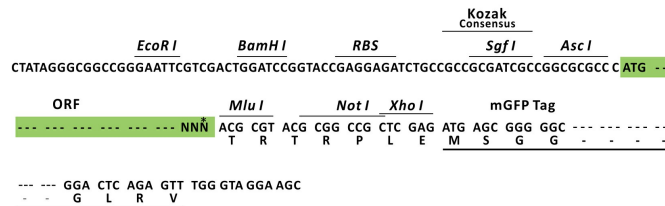
Product datasheet for MR210599L4

Adam11 (NM_001110778) Mouse Tagged Lenti ORF Clone

Product data:

Product Type:	Expression Plasmids
Product Name:	Adam11 (NM_001110778) Mouse Tagged Lenti ORF Clone
Tag:	mGFP
Symbol:	Adam11
Synonyms:	AW060611; Mdc
Mammalian Cell Selection:	Puromycin
Vector:	pLenti-C-mGFP-P2A-Puro (PS100093)
E. coli Selection:	Chloramphenicol (34 ug/mL)
ORF Nucleotide Sequence:	The ORF insert of this clone is exactly the same as(MR210599).
Restriction Sites:	AscI-MluI
Cloning Scheme:	

Cloning sites used for ORF Shuttling:



* The last codon before the Stop codon of the ORF.

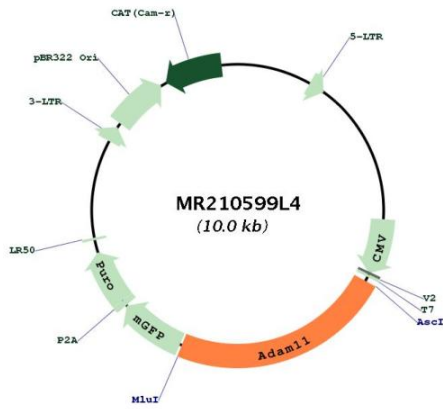
ACCN:	NM_001110778
ORF Size:	2334 bp



[View online »](#)

OTI Disclaimer:	The molecular sequence of this clone aligns with the gene accession number as a point of reference only. However, individual transcript sequences of the same gene can differ through naturally occurring variations (e.g. polymorphisms), each with its own valid existence. This clone is substantially in agreement with the reference, but a complete review of all prevailing variants is recommended prior to use. More info
OTI Annotation:	This clone was engineered to express the complete ORF with an expression tag. Expression varies depending on the nature of the gene.
Components:	The ORF clone is ion-exchange column purified and shipped in a 2D barcoded Matrix tube containing 10ug of transfection-ready, dried plasmid DNA (reconstitute with 100 ul of water).
Reconstitution Method:	<ol style="list-style-type: none">1. Centrifuge at 5,000xg for 5min.2. Carefully open the tube and add 100ul of sterile water to dissolve the DNA.3. Close the tube and incubate for 10 minutes at room temperature.4. Briefly vortex the tube and then do a quick spin (less than 5000xg) to concentrate the liquid at the bottom.5. Store the suspended plasmid at -20°C. The DNA is stable for at least one year from date of shipping when stored at -20°C.
RefSeq:	NM_001110778.1 , NP_001104248.1
RefSeq Size:	5129 bp
RefSeq ORF:	2337 bp
Locus ID:	11488
Cytogenetics:	11 66.48 cM
Gene Summary:	This gene encodes a member of a disintegrin and metalloprotease (ADAM) family of endoproteases that play important roles in various biological processes including cell signaling, adhesion and migration. The encoded preproprotein undergoes proteolytic processing to generate a mature, functional protein. The protein encoded by this gene is believed to lack metalloproteinase activity due to the lack of a critical catalytic motif. Mice lacking the encoded protein exhibit defects in spatial learning, motor coordination and altered perception of pain. Alternative splicing results in multiple transcript variants encoding different isoforms that may undergo similar processing. [provided by RefSeq, May 2016]

Product images:



Circular map for MR210599L4