

## Product datasheet for **MR210560**

### Pat1 (NM\_172635) Mouse Tagged ORF Clone

#### Product data:

Product Type:	Expression Plasmids
Product Name:	Pat1 (NM_172635) Mouse Tagged ORF Clone
Tag:	Myc-DDK
Symbol:	Pat1
Synonyms:	AV312086; Pat1b
Mammalian Cell Selection:	Neomycin
Vector:	pCMV6-Entry (PS100001)
E. coli Selection:	Kanamycin (25 ug/mL)



[View online »](#)

ORF Nucleotide  
Sequence:

>MR210560 representing NM\_172635  
Red=Cloning site Blue=ORF Green=Tags(s)

TTTTGTAATACGACTCACTATAGGGCGGCCGGAATTCGTCGACTGGATCCGGTACCGAGGAGATCTGCC  
GCC**CGGATCGCC**

ATGTTCCGCTACGAGTCTTTGGAGGATTGCTCTAGATGAAGATGAAGATGCATTTCAAGCCCTGGGAG  
AAGAAGATGAAGAAATTGATCAATTTAATGATGATACCTTTGGGTCAGGTGCAGTTGATGATGATTGGCA  
GGAAGCACATGAGCGCCTGGCTGAGTTGGAAGAGAAGCTACCTGTGCAGCTGATGAACAAACAGGCAAT  
GGAGAGAGAGATGAGATGGATTTGTTGGGTGACCATGAGGAGAATCTAGCAGAAAGGCTCAGTAAGATGG  
TGATTGAAAATGAGCTAGAAGATCCAGCTATCATGAGGGCAGTACAGACCAGGCCAGTTTACAACCTCA  
ACCAGGAAGTCTGAATCCAGCATCTGGGATGGATCTGAAGTTCTGAGGCGAATCCGTGGACCACTACTT  
GCTCAGGAAATGCCTACAGTGTCTGTATTAGAGTATGCCTTGCCTCAGAGGCCCTGCAGGGCCAGAAG  
ATGATCGGGACCTTTCTGAGCGAGCTTTACCAAGGCGGTCAACATCACCTATCATTGGAAGTCTCTCTGT  
TAGAGCCGTTCTATAGGCACCCACCTAAGCAGATGGCTGTTCCAGCTTCAACCAACAGATCCTGTGT  
CCGAAGCCTGTTTCATGTTTCGGCCCCAATGCCGCCACGCTATCCTGCTCCCTATGGCGAGAGGATATCTC  
CAAACCAGCTCTGCAGTGTCCCGAACTCCTCCCTCCTGGGCCACCCTTTTCTCCTAATGTTCTCTCTGT  
ACTTAGTCCCCTGCAGAGAGCACAGCTTCTTGGGGAGCACAGCTACAGCCTGGACGAATGTCTCCCAGC  
CAGTTTGCACGGGTCCCTGGGTTTGTGGTAGCCCACTGGCTGCCATGAATCCTAAGTTGCTACAAGGGC  
GCGTTGGGCAGATGCTTCCCCCAGCACCAAGCTTCCGTGCCTTCTTTAGTGTCCACCCCCGCTACGCC  
ACCTCCACAGCAGCATCCCCCTGGCCCAGGACCTCACCTACAAAACCTCAGACCTCAGGCCCAATGTTT  
AGAGCAGACACAACCTCACCTTCATCCACAGCACCGGCGCCTGTTGCATCAGAGGCAGCTGCAGAGCAGAA  
ATCAGCATCGGAATCTCAATGGTACTGGAGATAGAGGAGGGCACCAAGTCCAGTCATCAAGATCATCTCCG  
GAAGGATCCATATGCTAATCTAATGTTGACGCGGAGAAGGATTGGGTCTCTAAAATACAGATGATGCAG  
CTGCAGAGCACTGATCCCTACCTGGATGATTTCTATTACCAGAATTACTTTGAAAAACTGGAGAAATTTG  
CAGCTGTGAGGAAATACAAGGTGATGGCCCTAAGAAGGAGCGTACCAAGCTCATCACCCCTCAGGTGGC  
CAAACCTGGAGCATGCTTATCAGCCTGTGCAGTTTGGGGCTCGTTGGGGAAGCTTACTGTCTTAGTGTG  
AATAATCCTCGGAAGATGATAGATGCTGTTGTGACATCTCGAAGTGAGGATGATGAAACAAAAGAAAAAC  
AAGTTCGGGATAAGAGAAGAAAAACCTTGTTATAATTGAGAAAACCTATAGTTTACTCCTTGATGTGGA  
GGATTATGAAAGGCGCTATCTCCTAAGTCTAGAAGAAGAGCGGCCTGCCCTGATGGATGAAAGAAAGCAC  
AAAATATGTAGCATGTATGACAACCTGAGGGGCAAATTCCTGGACAAGAGAGGCCAAGTGTGACCACT  
TTGTACAGATCATGTGTATCCGAAAAGGGAAGAGAATGTTGCCCCGATTCTCCCTTTCTCTCCACAGA  
GCAAGCAGCTGACATTCTCATGGCAACTGCCAGGAACCTCCCTTTCTTATCAAGAAGGATGCCCAAGAT  
GAGGTGCTGCCATGCTTACTGAGTCCCTTCTCTCTCTCTCTCTATCATCTTCTTCAAGTACTGTACCA  
GCCTTCTGCAACAGCTAATGAACCTACCTCAGAGTGCAAGTGACCAGCGCCCTCCAACCTCACCTCAC  
TGCTGTGCTCCAGAACAAGTTTGGCTTGTCACTGCTCCTAATCCTACTAAGCCGTGGAGAAGACCTACAG  
AGTTCAGATCCTGCTATAGAATCAACGCAAAATAACCAGTGGACAGAGGTGATGTTTATGGCAACCCGAG  
AACTTCTACGGATCCCCCAAGCTGCCCTGGCCAAACCAATCTCTATCCCTACAAATCTAGTGTCCCTTTT  
TTCTCGCTATGTTGACCGGCAGAAACTGAACTTGTCTGAAAACAAAACCTGCAGCTGGTTTCAGGGGATACGG

**ACGCGT**ACGCGGCCGCTCGAGCAGAAACTCATCTCAGAAGAGGATCTGGCAGCAAATGATATCCTGGATT  
ACAAGGATGACGACGATAAGGTTTAA

Protein Sequence: >MR210560 representing NM\_172635  
 Red=Cloning site Green=Tags(s)

MFRYESLEDCPLDEDEDAFQGLGEEDEEIDQFNDDTFGSGAVDDDDWQEAHERLAELEEKLPVAADEQTGN  
 GERDEMDDLGDHEENLAERLSKMVIENELEDPAIMRAVQTRPVLQPQPGSLNSSIWDGSEVLRIRGPLL  
 AQEMPTVSVLEYALPQRPLQGPEDDRDLSERALPRRSTSPIIGSPPVRAVPIGTTPKQMAVPSFNQQILC  
 PKPVHVRPPMPPRYPAPYGERISPNQLCSVPNSSLLGHPFPPNVPPVLSPLQRAQLLGGACLQPGRMSPS  
 QFARVPGFVGSPLAAMNPKLLQGRVQMLPPAPSFRAFFSAPPPATPPPQHPGPGPHLQNLRPQAPMF  
 RADTTHLHPQHRLLHQRLQSRNQHRNLNGTGDGRGGHQSSHQDHLRKDPYANLMLQREKDWVSKIQMMQ  
 LQSTDPYLDFFYYQNYFEKLEKLSAAEEIQGDGPKKERTKLITPVAKLEHAYQPVFEGSLGKLTVSSV  
 NNPRKMIDAVVTSRSEDDTEKEQVRDKRRKTLVIEKTYSLLLDVEDYERRYLLSLEEERPALMDERKH  
 KICSMYDNLRGKLPQERPSDDHFVQIMCIRKGRMVARILPFLSTEQAADILMATARNLPFLIKKDAQD  
 EVLPCLLSPFSLLLYHLPSVTVTSLQQLMNLQASAPAPSNSHLTAVLQNKFGLSLLILLRSGEDLQ  
 SSDPAIESTQNNQWTEVMFMATRELLRIPQAALAKPISIPTNLVSLFSRYVDRQKLNLLLETKLQLVQGIR

TRTRPLEQKLISEEDLAANDILDYKDDDDKV

Chromatograms: [https://cdn.origene.com/chromatograms/mm9098\\_d10.zip](https://cdn.origene.com/chromatograms/mm9098_d10.zip)

Restriction Sites: Sgfl-MluI

Cloning Scheme:

Cloning sites used for ORF Shuttling:



\* The last codon before the Stop codon of the ORF

ACCN: NM\_172635

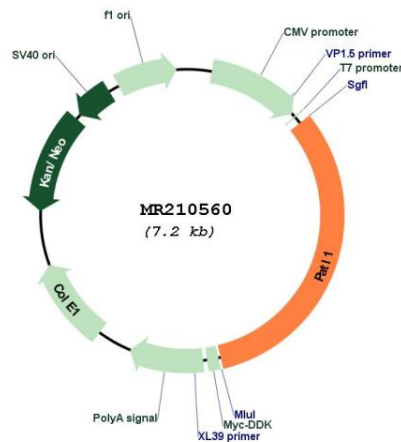
ORF Size: 2310 bp

OTI Disclaimer: The molecular sequence of this clone aligns with the gene accession number as a point of reference only. However, individual transcript sequences of the same gene can differ through naturally occurring variations (e.g. polymorphisms), each with its own valid existence. This clone is substantially in agreement with the reference, but a complete review of all prevailing variants is recommended prior to use. [More info](#)

OTI Annotation: This clone was engineered to express the complete ORF with an expression tag. Expression varies depending on the nature of the gene.

<b>Components:</b>	The ORF clone is ion-exchange column purified and shipped in a 2D barcoded Matrix tube containing 10ug of transfection-ready, dried plasmid DNA (reconstitute with 100 ul of water).
<b>Reconstitution Method:</b>	<ol style="list-style-type: none"> <li>1. Centrifuge at 5,000xg for 5min.</li> <li>2. Carefully open the tube and add 100ul of sterile water to dissolve the DNA.</li> <li>3. Close the tube and incubate for 10 minutes at room temperature.</li> <li>4. Briefly vortex the tube and then do a quick spin (less than 5000xg) to concentrate the liquid at the bottom.</li> <li>5. Store the suspended plasmid at -20°C. The DNA is stable for at least one year from date of shipping when stored at -20°C.</li> </ol>
<b>RefSeq:</b>	<u>NM_172635.3, NP_766223.2</u>
<b>RefSeq Size:</b>	4221 bp
<b>RefSeq ORF:</b>	2313 bp
<b>Locus ID:</b>	225929
<b>UniProt ID:</b>	<u>Q3TC46</u>
<b>Cytogenetics:</b>	19 A
<b>MW:</b>	86.8 kDa
<b>Gene Summary:</b>	RNA-binding protein involved in deadenylation-dependent decapping of mRNAs, leading to the degradation of mRNAs. Acts as a scaffold protein that connects deadenylation and decapping machinery. Required for cytoplasmic mRNA processing body (P-body) assembly (By similarity).[UniProtKB/Swiss-Prot Function]

### Product images:



Circular map for MR210560