

Product datasheet for **MR210553**

Dcbld2 (NM_028523) Mouse Tagged ORF Clone

Product data:

Product Type:	Expression Plasmids
Product Name:	Dcbld2 (NM_028523) Mouse Tagged ORF Clone
Tag:	Myc-DDK
Symbol:	Dcbld2
Synonyms:	1700055P21Rik; AW146002; CLCP1; Esdn
Mammalian Cell Selection:	Neomycin
Vector:	pCMV6-Entry (PS100001)
E. coli Selection:	Kanamycin (25 ug/mL)



[View online »](#)

ORF Nucleotide
Sequence:

>MR210553 representing NM_028523
 Red=Cloning site Blue=ORF Green=Tags(s)

TTTTGTAATACGACTCACTATAGGGCGGCCGGGAATTCGTGACTGGATCCGGTACCGAGGAGATCTGCC
 GCCGCGATCGCC

ATGGCGAGCCGGCGCCGCTGAGAGCCGCGCAGCCCCAGGGTCCCGAGGCCGGCCGCGCCCGCCG
 CCACCGGCCGGCCGCGCTGCCAGCGCCGGCTGCTGTCCCTCCCTCCTGGCCGCAACTCCTCCTCCAG
 GCCTCGACTGCTCCTTCTGCTGCTCCTACTGCTCCAGGACGCTGGAGGCCAGCAAGGTGATGGATGTGA
 CACACTGTACTAGGCCCTGAGAGTGAACCCCTTACATCCATCAACTACCCACATACCTATCCTAACAGCA
 CTGTGTGTGAATGGGAGATTCGAGTCAGGACGGGAGAAAGGATTCGCATCAAATTCGGTGACTTTGACAT
 TGAAGATTCTGATTATTGTCACCTTAATTACCTGAAAATCTTTAATGGAATTGGAGTCAGCAGAACGGAA
 ATAGGCAAATACTGTGGTCTGGGTTTACAAATGAATCAGTCAATTGAGTCCAAAGGCAGTGAAGTCACAG
 TGCTGTTTCATGAGTGAACCCATGCTGCTGGGCGAGGATTTTTGGCTTCATACTCAGTTATAGATAAAGA
 AGATTTAATCACTTGTGGTGGATACTGTATCTAATTTTTTGAACCAGAGTTCAGTAAGTACTGCCAGCT
 GGCTGTCTTTTGCTTTTGTGAAATATCTGGAACAATTCCTCATGGATACAGAGATTCTCACCATTGT
 GTATGGCTGGAATCCATGCAGGAGTAGTGTCAAACGTGCTGGGTGGCCAAATCAGCATTGTGATTAGCAA
 AGGGACCCCATATTATGAAAGCTCTTTGGCCAACAATGCACTCCACGGTGGGATACTTATCTGCAAGT
 CTGTTTACATTTAAGACAAGTGGTTGCTATGGGACTCTGGGGATGGAGTCTGGTGTGATTGCCGATCCCC
 AGATAACAGCATCGTCTGCACTGGAGTGGACTGACCACATGGGGCAGGAGAACAGCTGGACAGCGGGAGAA
 GGCCAGGCTGAGAAAACCCGGCCCTCCCTGGGCTGCTTTTGGCACTGATGAGCATCAGTGGCTGCAGATA
 GACCTTAACAAGGAGAAGAAGATAACAGGTATCGTAACCACTGGGTCTACCATGATAGAACACAGTTACT
 ATGTGTCTGCCTACAGAGTCTGTACAGTGACGATGGGCAGAGATGGACTGTGTACAGAGAACCTGGTGT
 GGACCAGGACAAGATATTTCAAGGAAACAAAGATTATCACAAGGATGTTGTAATAACTTTTTGCCACCA
 ATTATTGCACGTTTCATTAGAGTGAACCCGTCCAGTGGCAACAGAAAATTGCCATGAAAGTGAACTGC
 TCGGATGTCAGTTTACTCTCAAAGTTCGCTTCCAAAGCTTACTCCACCTCCTCGGAACGGCAATAACCT
 CAGAAATACTACAGCTCGTCCCAAAGTGGTCTGCCCTAAATTTACTCAAGTGTCCAACCTCGAAGT
 AGGAATGAACTTCTGTGCAGCCGGCGGAGACAACCTACCCTCCTGATATAAAAAACAGACTGTAACCTC
 CCAGTGAACCAAAGATGTCGCACTGGCTGCCGTTCTGGTCCCTGTGCTGGTTCATGGCCCTCACCACCT
 CATCCTCATTCTAGTGTGTGCTTGGCACTGGAGAAACAGGAAGAAGAAAAGTGAAGGCGCCTATGATTTA
 CCCCCTGGGATCGGGCAGGTTGGTGGAAAGGAATGAAGCAGCTTCTCCCTGCCAAGTCGGTGGACCACG
 AGGAGACGCCAGTGCCTACAGCACTAGTGAAGTCACTGAGTCCAGTGGCAGGGAAGTACCACAGTGTCT
 GCAGGCCGACTCTGCAGAATATGCACAGCCCTCGTGGGAGGAATTGTTGGCACACTCCATCAGAGATCC
 ACCTTTAAACCTGAGGAAGGGAAGGAAGCAGGCTATGCAGACCTCGATCCTTACAACCTCCTCAATGCAGG
 AAGTGTACCACGCCTATGCTGAACCACTGCCCGTAACGGGGCCTGAGTACGCAACCCCGATCGTCATGGA
 CATGTCAGGGCACCCACAGCCTCAGTTGGTCTGCCCTCCACATCCACCTTCAAACCTGCAGGGACCCAG
 CCTCACGCTTTAGTGGGAACTTACAACACTTCTCTCCAGGACTGACAGCTGTTCTCAGGCCAGGCTC
 AGTATGACACCCAAAAGGTGGGAAGTCAGTGTCTACCCAGAGGAACTGGTATACCAGGTGCCCCAGAG
 CACCCAGGAGCTATCAGGAGCAGGAAGGGATGAGAAGTTTGTGCTTTTAAAGAAATCCTT

ACGCGTACGCGGCCGCTCGAGCAGAAACTCATCTCAGAAGAGGATCTGGCAGCAAATGATATCCTGGATT
 ACAAGGATGACGACGATAAGGTTTAA

Protein Sequence: >MR210553 representing NM_028523
 Red=Cloning site Green=Tags(s)

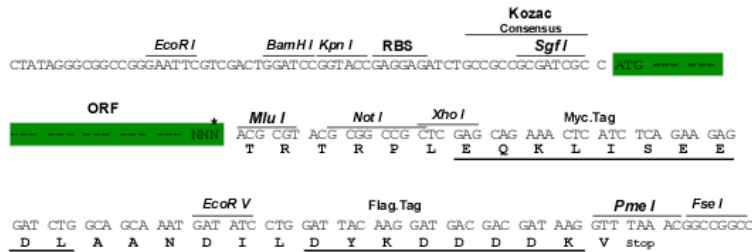
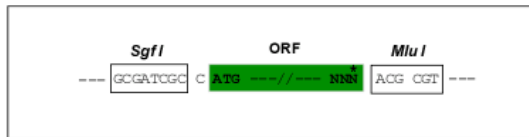
MASRAPLRAARSPQGGPAAAPATGRAALPSAGCCPLPPGRNSSSRPRLLLLLLLLLLQDAGGQQGDGCG
 HTVLGPESGTLTSINYPHTYPNSTVCEWEIRVRTGERIRIKFGDFDIEDSDYCHLNYLKFNGIGVSRTE
 IGKYCGLGLQMNQSIESKGSEVTVLFMSGTHAAGRGFLASYSVIDKEDLITCLDTVSNFLEPEFSKYCPA
 GCLLPFAEISGTIPHGIRDSSPLCMAGIHAGVVSNNLGGQISIVISKGTPYYESSLANNVSTVGYLSAS
 LFTFKTSGCYGTLGMESGVIADPQITASSALEWTDHMGQENSWTAEKARLRKPGPPWAAFATDEHQWLQI
 DLNKEKKITGIVTTGSTMIEHSYVVSAYRVLVYSDDGQRWTVYREPGVDQDKIFQGNKDYHKDVRNNFLPP
 I IARFIRVNPVQWQKIAMKVELLGCQFTLKGRLPKLTPPPRNGNLRNTTARPKLGRAPKFTQVLQPRS
 RNELPVQPAETTTTPDIKNTTVPSVTKDVALA AVLVPVLMAL TTLILILVCAWHWRNRKKKTEGAYDL
 PHWDRAGWWKGMKQLLPAKSDHEETPVRYSTSEVSHLSAREVTVLQADSAEYAQPLVGGIVGTLHQRS
 TFKPEEGKEAGYADLPYNSPMQEVYHAYAEPLVPTGPEYATPIVMDMSGHPTASVGLPSTSTFKTAGTQ
 PHALVGTYNLTL SRTDSCSSGQAQYDTPKGGKSAATPEELVYQVPQSTQELSGAGRDEKFDFAKEIL

TRTRPLEQKLISEEDLAANDILDYKDDDDKV

Restriction Sites: SgfI-MluI

Cloning Scheme:

Cloning sites used for ORF Shuttling:



* The last codon before the Stop codon of the ORF

ACCN: NM_028523

ORF Size: 2301 bp

OTI Disclaimer: The molecular sequence of this clone aligns with the gene accession number as a point of reference only. However, individual transcript sequences of the same gene can differ through naturally occurring variations (e.g. polymorphisms), each with its own valid existence. This clone is substantially in agreement with the reference, but a complete review of all prevailing variants is recommended prior to use. [More info](#)

OTI Annotation: This clone was engineered to express the complete ORF with an expression tag. Expression varies depending on the nature of the gene.

Components: The ORF clone is ion-exchange column purified and shipped in a 2D barcoded Matrix tube containing 10ug of transfection-ready, dried plasmid DNA (reconstitute with 100 ul of water).

Reconstitution Method:

1. Centrifuge at 5,000xg for 5min.
2. Carefully open the tube and add 100ul of sterile water to dissolve the DNA.
3. Close the tube and incubate for 10 minutes at room temperature.
4. Briefly vortex the tube and then do a quick spin (less than 5000xg) to concentrate the liquid at the bottom.
5. Store the suspended plasmid at -20°C. The DNA is stable for at least one year from date of shipping when stored at -20°C.

RefSeq: [NM_028523.2](#), [NM_028523.3](#), [NP_082799.2](#)

RefSeq Size: 6487 bp

RefSeq ORF: 2310 bp

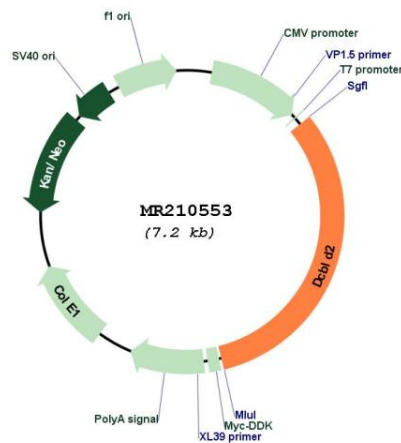
Locus ID: 73379

UniProt ID: [Q91ZV3](#)

Cytogenetics: 16 C1.2

MW: 84.2 kDa

Product images:



Circular map for MR210553