

Product datasheet for **MR210528**

AW551984 (BC061211) Mouse Tagged ORF Clone

Product data:

Product Type:	Expression Plasmids
Product Name:	AW551984 (BC061211) Mouse Tagged ORF Clone
Tag:	Myc-DDK
Symbol:	AW551984
Synonyms:	3222402N16
Mammalian Cell Selection:	Neomycin
Vector:	pCMV6-Entry (PS100001)
E. coli Selection:	Kanamycin (25 ug/mL)



[View online »](#)

ORF Nucleotide
Sequence:

>MR210528 ORF sequence
Red=Cloning site Blue=ORF Green=Tags(s)

TTTTGTAATACGACTCACTATAGGGCGGCCGGGAATTCGTCGACTGGATCCGGTACCGAGGAGATCTGCC
GCCGCGATCGCC

ATGGTGC GTTCTGGCGGCTTACTACTAGCATAAGAGATCCAGTGGCACTGAAGAGCATTGCTGTGACTC
TGTCATCAATGATTTTGTGGCTGGTGTCTGCAACCCTAAACTATGAGAATGAAGAGAAATCACCCCT
GGAGGCCTTCTTTGTGTTCCCATGGATGAAGATTCTGCTGTCTACAGCTTTGAGGCCTTTGTGGATGGG
AAGAAAATTGTGGCAGA ACTTCAGGACAAGTACCAGGCCACAAAAGGTATGAAGAGGCCCTCTCTGGAG
GATATCAGGCCTACTTATTGGAGGAAGACAAGTGTCCCGGGATGCTTCTGTTGCAATGTGGGAACT
GCAACCAGGGTCAAAGTGTCACTGACCCTGAGATATGTGCAAGAACTCCCTTGAAGACGATGGGGCC
CTGCGTTATGTGCTCCAGCCATCCTGAATCCTAGATACCATCTCTCGATGGACGTGAGGACAGTAATC
TGGATATGAAGACCCCAATAGTCCCTTTGGAGGAATTGCCCTACACACTCAGCATGGTTGCCACTATCAG
CTCCCAGCTTGGTATCAGTACAATCCAATCCAAGTGTCCCTTGAATCCCATTGAGTACACTGGAGAATTT
GTGTTCTTATGGACCGTTCAAGAAGCATGAATAGCCCATGAGTTCCAAGGACAAGTCTCAGCTGAGAA
TAGATGCTGCCAAGGAAACACTGATTCTGCTATTGAAGAGTTTGCCAATGGGCTGCTATTCAACATCTA
TGGATTTGGAGCCACCATGAGGAGTCTTTCCAGACAGTGTGATGTACAATCAGGAAACCATGCAGATT
GCTGTGAAGAAAGTAAAGCGTTTGTGGCGGATCTAGGAGGGACTGAACTTTTAAACCCACTACGGAAAA
TTTTTAGGAAACCCCAATCCCAGGGCATCCCTTACAGGTCTTTGTCTTCACTGATGGAGAAGTTGTTGA
AACTTTTAGTGTAAATCAGAGAAGTTATGTTCCAGAGCAAGAAGCACAGATGTTTCTCATTGGCATTGGA
GAAGGGCCCTCCACTAGCTTAATCAAGAACCTTGCCCGGTGTCAGGGGGCACTGCAGAGTTTATCACAG
GCAATGATAGGATGCAGTCCAAGGCCCTTAGATCTCTGAGGCGTCTTTACAGTCTGTAGTAGGATGT
CTCTGAGCTGGAATTTGCCTCCCAAGATGTTTGCACCTATGCTATCTCCAGAACA AACTTCTATCTTT
AGGGGTCAAAGGCTAATCATCTACAGCCTACTGATTGAAAAATACCAAAAAGAAGAGGCAACCGGTGAAG
TGTGCTCTCATATAAGCTTTCATGGTAAAAGTTATGAGGAAAAAGTGACATTTTCTACAGCCAAAGCC
TGATGACAACCTCACCATTACCCTGCTGCAAAGTCCATGATCCAGTCCAAAGACTTTGGCTTCAAG
GAGACGCTACTAATGTATAAGAGAGATGTGCTGGACATCAGCCTAGAGTCTGGAGTCATGAGTTCCTTTA
CAGCCTTTGTTGCCATCAACAAGGAGCTCAACGAGCCATCCAGGGGCCCTGGTGCATAGGGATATCCC
AAGGCCTATTCTCTTGGGTGCAGGTCTAATAGGCCCTCTGATGGTGGTTATCCCAAACTTTATTCTGC
GCCAGTGTCTGTAACTCTGCCTCCATGGCTGAAGGGCTCAGGAAAATGTGTTGCTACAATACTCATGC
CAAATGGCACACCCCAACAGCGTCAGAACAGCCAGAAGAAGAAATGTGTGGTTCATACAGATACTGCC
TGAGTTGCCCCACCTGGCTAAATATGACAGTACCACAAGGGAGTAAGGAGCATAGTATTGCACAGCTG
ATATATCTCCAGAATGCAGATGGTTCCTGGGATATGAATGAGGATTTAGCTAAGATTCTAAGTACTAGTT
TGAAGACATCACAGCTGCATGCCCTACTGAGGTGTTAGAACCCTCAGCCTGGGTACAATGCTGGCCGT
GATCTGGCTGCATGCCAATGGCAAGGAATTGAAGGACGAGTGGGAGCTTCTGAAAGAAAGGCTGTGGTT
TGGCTTACAATAATTCAGCCCTGACTCTTATTCCTCTCTCCACAGTCCGTGGTTTCAACAAGCTTATA
CGTACTGCCAACAAGCTCTTGAAGACATCTTTGAGCCCTCGATCTTCAAGTTATAAGAGTGTATGCCAG
GAGAATGGCATTCTTTCTGCCTCCTGCCACACCTTACCTCATCTCC

ACGCGTACGCGGCCGCTCGAGCAGAACTCATCTCAGAAGAGGATCTGGCAGCAAATGATATCCTGGATT
ACAAGGATGACGACGATAAGGTTTAA

Protein Sequence: >MR210528 protein sequence
 Red=Cloning site Green=Tags(s)

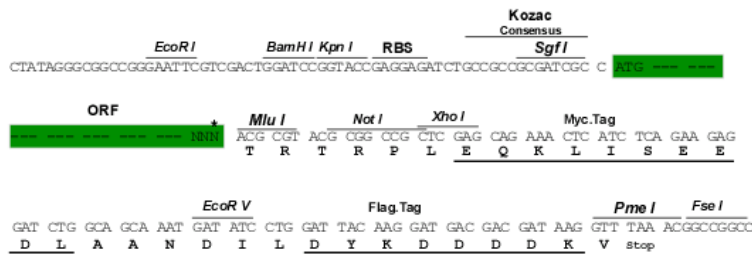
MVRSGLLTSIRDVVALKSIIVTSLINDFVAGVSATLNYENEKSPLEAFFVFPMDSDAVVYSFEAFVVDG
 KKIVAEALQDKYQAHKRYEEALSGGYQAYLLEEDKCSRDFCCNVGNLQPGSKVSLTRYVQELPLEDDGA
 LRYVLPAILNPRYHLSDGREDSNLDMKTPIVPLEELPYTSLSMVATISSQLGISTIQSNCLNPIEYTFGEF
 VFLMDRSRSMNSPMSSKDKSQLRIDAAKETLILLKSLPMGCYFNIIYGFGATHEEFFPDSVMYNQETMQI
 AVKVKRLLADLGGTELLTPLRKIFRKPPIPGHPLQVVFVFDGEVVETFSVIREVMFQSKKHRCFSFGIG
 EGASTSLIKNLARVSGGTAEFITGNDRMQSKALRSLRSLQSVVEDVSLSWNLPPKMFAPMLSPEQTSIF
 RGQRLIIYSLIIGKIPKEEATGEVCLSYKLHGKSYEEKVTFSLQPKPDDNLTIHRLAAKSMIQSKDFGFK
 ETSLMYKRDVLDISLESGVMSSFTAFVAINKELNEPIQGPLVHRDIPRPILLGAGPNRPSDGGYPKTLFC
 ASAPVTLPWPKGSGKCVATILMPNGTPQQRQNSQKKKCVVHTDTRPELPHLAKYDSYPQGSKEHSIAQL
 IYLNQADGSDMNEDLAKILSTSLEDITAACTEVLPEPSAWATMLAVIWLHANGKELKDEWELLERKAVV
 WLHNNSALTLIPPLHSPWFQQAITYCQQALEDIFEPLDLQVIRVMSRRMAFFPASCHTLHLIS

TRTRPLEQKLISEEDLAANDILDYKDDDDKV

Restriction Sites: SgfI-MluI

Cloning Scheme:

Cloning sites used for ORF Shuttling:



* The last codon before the Stop codon of the ORF

ACCN: BC061211

ORF Size: 2289 bp

OTI Disclaimer: The molecular sequence of this clone aligns with the gene accession number as a point of reference only. However, individual transcript sequences of the same gene can differ through naturally occurring variations (e.g. polymorphisms), each with its own valid existence. This clone is substantially in agreement with the reference, but a complete review of all prevailing variants is recommended prior to use. [More info](#)

OTI Annotation: This clone was engineered to express the complete ORF with an expression tag. Expression varies depending on the nature of the gene.

Components: The ORF clone is ion-exchange column purified and shipped in a 2D barcoded Matrix tube containing 10ug of transfection-ready, dried plasmid DNA (reconstitute with 100 ul of water).

Reconstitution Method:

1. Centrifuge at 5,000xg for 5min.
2. Carefully open the tube and add 100ul of sterile water to dissolve the DNA.
3. Close the tube and incubate for 10 minutes at room temperature.
4. Briefly vortex the tube and then do a quick spin (less than 5000xg) to concentrate the liquid at the bottom.
5. Store the suspended plasmid at -20°C. The DNA is stable for at least one year from date of shipping when stored at -20°C.

RefSeq: [BC061211](#), [AAH61211](#)

RefSeq Size: 3304 bp

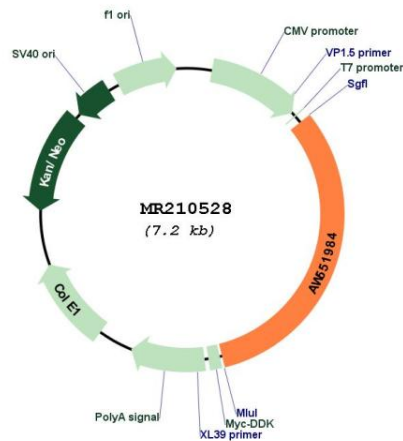
RefSeq ORF: 2291 bp

Locus ID: 244810

Cytogenetics: 9 A5.1

MW: 85.4 kDa

Product images:



Circular map for MR210528