

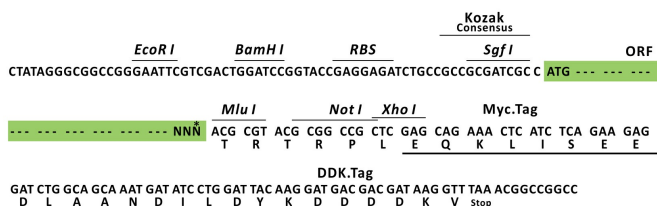
Product datasheet for MR210517L1

Fap (NM_007986) Mouse Tagged Lenti ORF Clone

Product data:

Product Type:	Expression Plasmids
Product Name:	Fap (NM_007986) Mouse Tagged Lenti ORF Clone
Tag:	Myc-DDK
Symbol:	Fap
Synonyms:	SIMP
Mammalian Cell Selection:	None
Vector:	pLenti-C-Myc-DDK (PS100064)
E. coli Selection:	Chloramphenicol (34 ug/mL)
ORF Nucleotide Sequence:	The ORF insert of this clone is exactly the same as(MR210517).
Restriction Sites:	SgfI-MluI
Cloning Scheme:	

Cloning sites used for ORF Shuttling:



* The last codon before the Stop codon of the ORF.

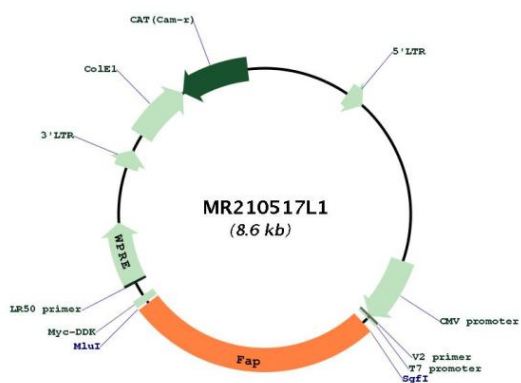
ACCN:	NM_007986
ORF Size:	2283 bp



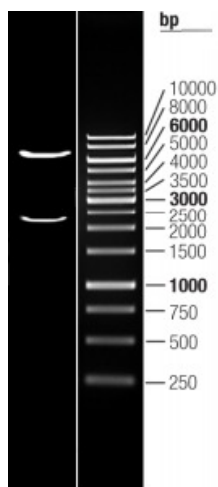
[View online »](#)

OTI Disclaimer:	The molecular sequence of this clone aligns with the gene accession number as a point of reference only. However, individual transcript sequences of the same gene can differ through naturally occurring variations (e.g. polymorphisms), each with its own valid existence. This clone is substantially in agreement with the reference, but a complete review of all prevailing variants is recommended prior to use. More info
OTI Annotation:	This clone was engineered to express the complete ORF with an expression tag. Expression varies depending on the nature of the gene.
Components:	The ORF clone is ion-exchange column purified and shipped in a 2D barcoded Matrix tube containing 10ug of transfection-ready, dried plasmid DNA (reconstitute with 100 ul of water).
Reconstitution Method:	<ol style="list-style-type: none"> 1. Centrifuge at 5,000xg for 5min. 2. Carefully open the tube and add 100ul of sterile water to dissolve the DNA. 3. Close the tube and incubate for 10 minutes at room temperature. 4. Briefly vortex the tube and then do a quick spin (less than 5000xg) to concentrate the liquid at the bottom. 5. Store the suspended plasmid at -20°C. The DNA is stable for at least one year from date of shipping when stored at -20°C.
Note:	Plasmids are not sterile. For experiments where strict sterility is required, filtration with 0.22um filter is required.
RefSeq:	NM_007986.2 , NP_032012.1
RefSeq Size:	2704 bp
RefSeq ORF:	2286 bp
Locus ID:	14089
UniProt ID:	P97321
Cytogenetics:	2 35.85 cM
Gene Summary:	This gene belongs to the serine protease family. The encoded protein is an inducible cell-surface bound glycoprotein specifically expressed in tumor-associated fibroblasts and pericytes of epithelial tumors and has protease and gelatinase activity. The protein plays a role in remodeling of the extracellular matrix (ECM) and may affect tumorigenesis and tissue repair. Alternately spliced transcript variants of this gene are described in the literature (PMID 9139873), but the full-length sequence of these variants is not available. [provided by RefSeq, Apr 2013]

Product images:



Circular map for MR210517L1



Double digestion of MR210517L1 using SgfI and MluI