

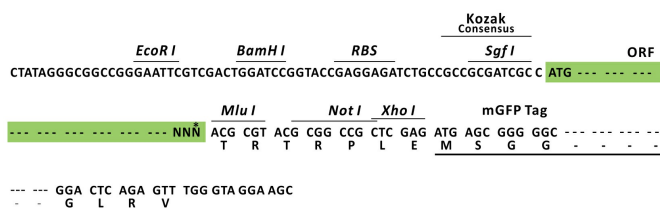
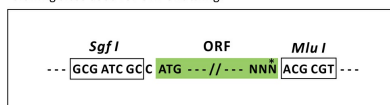
Product datasheet for MR210516L4

C2 (NM_013484) Mouse Tagged Lenti ORF Clone

Product data:

Product Type:	Expression Plasmids
Product Name:	C2 (NM_013484) Mouse Tagged Lenti ORF Clone
Tag:	mGFP
Symbol:	C2
Mammalian Cell Selection:	Puromycin
Vector:	pLenti-C-mGFP-P2A-Puro (PS100093)
E. coli Selection:	Chloramphenicol (34 ug/mL)
ORF Nucleotide Sequence:	The ORF insert of this clone is exactly the same as(MR210516).
Restriction Sites:	SgfI-MluI
Cloning Scheme:	

Cloning sites used for ORF Shuttling:



* The last codon before the Stop codon of the ORF.

ACCN: NM_013484

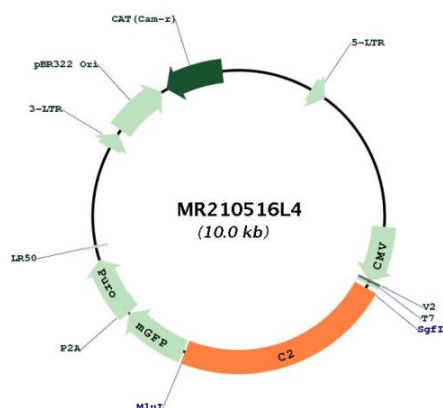
ORF Size: 2280 bp



[View online »](#)

OTI Disclaimer:	The molecular sequence of this clone aligns with the gene accession number as a point of reference only. However, individual transcript sequences of the same gene can differ through naturally occurring variations (e.g. polymorphisms), each with its own valid existence. This clone is substantially in agreement with the reference, but a complete review of all prevailing variants is recommended prior to use. More info
OTI Annotation:	This clone was engineered to express the complete ORF with an expression tag. Expression varies depending on the nature of the gene.
Components:	The ORF clone is ion-exchange column purified and shipped in a 2D barcoded Matrix tube containing 10ug of transfection-ready, dried plasmid DNA (reconstitute with 100 ul of water).
Reconstitution Method:	<ol style="list-style-type: none"> 1. Centrifuge at 5,000xg for 5min. 2. Carefully open the tube and add 100ul of sterile water to dissolve the DNA. 3. Close the tube and incubate for 10 minutes at room temperature. 4. Briefly vortex the tube and then do a quick spin (less than 5000xg) to concentrate the liquid at the bottom. 5. Store the suspended plasmid at -20°C. The DNA is stable for at least one year from date of shipping when stored at -20°C.
Note:	Plasmids are not sterile. For experiments where strict sterility is required, filtration with 0.22um filter is required.
RefSeq:	NM_013484.1
RefSeq Size:	2644 bp
RefSeq ORF:	2283 bp
Locus ID:	12263
UniProt ID:	P21180
Cytogenetics:	17 18.41 cM
Gene Summary:	<p>This gene encodes component C2 of the classical pathway of the complement system. The encoded protein undergoes proteolytic processing mediated by component C1 resulting in C2a and C2b fragments. C2a fragment, in turn, selectively cleaves components C3 and C5 of the complement system. Mice lacking the encoded protein are found to be more susceptible to bacterial infections. Mutations in the human homolog of this gene are associated with disorders such as systemic lupus erythematosus, Henoch-Schonlein purpura, or polymyositis. [provided by RefSeq, Mar 2015]</p>

Product images:



Circular map for MR210516L4