

## Product datasheet for **MR210515**

### **Mep1a (NM\_008585) Mouse Tagged ORF Clone**

#### **Product data:**

Product Type:	Expression Plasmids
Product Name:	Mep1a (NM_008585) Mouse Tagged ORF Clone
Tag:	Myc-DDK
Symbol:	Mep1a
Synonyms:	AI098089; AW107200; Mep-1; Mep-1a; Mep1
Mammalian Cell Selection:	Neomycin
Vector:	pCMV6-Entry (PS100001)
E. coli Selection:	Kanamycin (25 ug/mL)



[View online »](#)

ORF Nucleotide  
Sequence:

>MR210515 ORF sequence  
Red=Cloning site Blue=ORF Green=Tags(s)

TTTTGTAATACGACTCACTATAGGGCGGCCGGAATTCGTCGACTGGATCCGGTACCGAGGAGATCTGCC  
GCCCGCATCGCC

ATGGCAAGGAGGCTTGGCAGATCCAGTTCAATTTGCAATAATGCTTTGGATACAACCTGCGTGTCTTCTCT  
CACTGATTTTTCTGCCACATAGCAGCTGTATCGATTAAAGCATCTTTGAATGGATCTGATCACGATAC  
AGATGTTGGTGAACAGAAGGATATTTTCGAAATCAATTTAGTCGAGGCCTGAACCTCTTTCAAGGGGAC  
ATCCTTCTGCCAGAACCAGAAATGCCATGCGAGATCCCTCAAGCAGATGGAAGCTCCCCATTCCATACA  
TTCTGGCTGACAATCTGGAGCTGAATGCCAAAGGAGCCATCCTCCATGCCTTTGAGATGTTCCGCCTCAA  
GTCTTGTGTGGATTTCAAGCCCTACGAAGGGGAGAGTTCTGTATATCATCTTCCAGAACTTTCTGGGTGC  
TGGTCTATGATTGGTGTCAACAGGTGGGACAGAACATTTCCATTGGTGAGGGATGTGACTTTAAGGCCA  
CCATTGAACATGAAATCCTGCATGCTCTGGGATTCCTCCATGAGCAGTCAAGGACTGACCGGGATGATTA  
TGTGAACATTTGGTGGGATCAAATCATTACAGACTATGAACATAATTTCAACACATATGACGACAACACC  
ATCACAGACCTCAACACACCCTATGATTATGAGTCCCTGATGCACTACGGGCCATTTTCGTTTAAACAAGA  
ACGAAAGCATCCCTACCATTACTACCAAGATCCCTGAGTTTAAACACCATCATTGGACAACCTCCCGGACT  
CAGTGCCATTGATCTAATAAGACTGAATCGAATGTACAACCTGCACCGCAACACATACTCTGTTGGACCAC  
TGTGACTTTGAGAAGACCAACGTCTGTGGGATGATCCAGGGAACCAAGAGATGATGCTGATTGGGCTCATG  
GGGACAGCAGTCAGCCTGAACAAGTGGATCACACCTTGGTGGGACAGTGTAAAGGTGCCGGCTACTTCAT  
GTTCTTCAATACCAGCTTGGGGCAAGAGGAGAGGCAGCCCTTCTGGAGTCTCGAATCCTTTATCCCAAG  
AGGAAGCAGCAGTGTTCAGTTTTTTTATAAGATGACTGGAAGCCCTGCAGACAGATTTGAAGTCTGGG  
TGAGAAGGGACGACAACCGGGCAAGGTGCGACAGCTGGCCAAGATCCAGACCTTTCAAGGAGACTCTGA  
TCACAAC TGAAAATTGCTCATGTGACACTCAATGAAGAAAAGAAATTTTCGCTATGTTTTCTGGGTACC  
AAAGGGGACCCTGGTAACTCAAGTGGTGGTATTTACCTTGATGACATCACTCTGACAGAAAACCCCTGCC  
CTGCAGGGGTTTGGACCATCCGGAATATCTCCAGATCCTTGAGAACACAGTGAAAGGGGACAAGCTCGT  
GAGCCCTCGGTTCTACAATTCTGAGGGTACGGTGTGGGGGTGACCTTGTACCCCAATGGTAGAATCACC  
AGTAACTCTGGCTTCTGGGACTCACTTTTCACTTGTACAGTGGGGATAACGATGCGATTCTGGAGTGGC  
CAGTGGAAAACAGACAGGCCATAATGACCATCCTGGACCAGGAAGCTGATACCAGGAACAGGATGTCCTT  
GACCTTGATGTTCACTACCTCCAAGAACCAAAACATCTTCAGCTATAAATGGCTCTGTCTGGGACAGG  
CCATCCAAGTGGGAGTCTATGATAAGGACTGTGATTGTTTCAGAAGCCTTGACTGGGGCTGGGGTCAGG  
CCATCTCCACCAGCTGCTGAAGAGAAGAAATTTCTTAAAGGCGACAGCCTCATATTTTCGTGGACTT  
TAAAGACCTCACCCACCTGAACCGGACTGAAGTTCAGCTTCAGCCAGAAGCACGATGCCAGAGGCCTC  
CTTCTGCAAGGCCAGGAGTCTCCTGCCTTGGGAGAAAAGCTCCAGAAAAGCCATGCTGGAGGAATCCCTGC  
CAAGCAGCCTGGGCCAGAGACATCCCAGCAGACAGAAGCGCTCGGTGGAGAACACTGGCCCCATGGAGGA  
CCACAAC TGGCCACAGTACTTCAGAGACCCCTGTGACCCAAACCTTGCCAGAATGAAGGCACCTGTGTG  
AACGTAAGGGGAATGGCCAGCTGCAGGTGCGTCTCTGGGCACGCCTTTTCTACGCAGGGGAGCGCTGTC  
AGGCCATGCACGTGCACGGCAGCTTGTGGGCCCTGCTCATTGGCTGCATCGCTGGCTTGATCTTCTTGAC  
CTTCGTACATTCTACCACCAACGAAAGCTGCGGCAG

ACGCGTACGCGGCCGCTCGAGCAGAAAACCTCATCTCAGAAGAGGATCTGGCAGCAAATGATATCCTGGATT  
ACAAGGATGACGACGATAAGGTTTAA

**Protein Sequence:** >MR210515 protein sequence  
 Red=Cloning site Green=Tags(s)

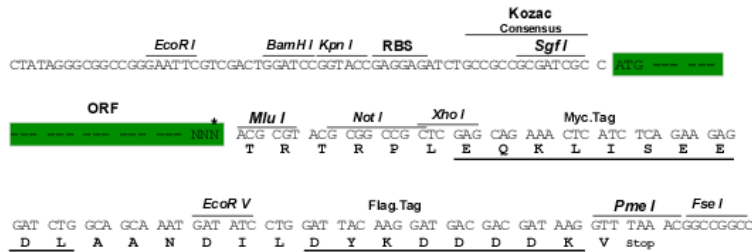
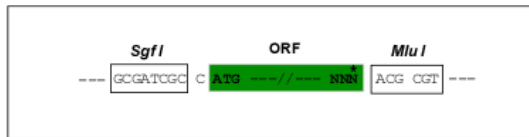
MARRLGRSSSFAIMLWIQPACLLSLIFSAHIAAVSIKHLNLSGDHDTDVGEQKDIFEINLAAGLNLFQGD  
 ILLPRTRNAMRDPSSRWKLPYIPYLADNLELNAKGAILHAFEMFRLKSCVDFKPYEGESSYIIFQKLSGC  
 WSMIGDQQVQNIISIGEGCDFKATIEHEILHALGFFHEQSRTRDDYVNIWWDQIITDYEHNFNTYDDNT  
 ITDLNTPYDYESLMHYGPF SFNKNESIPTITTKIPEFNTIIGQLPDFSAIDLIRLNRMYNCTATHLLDH  
 CDFEKTNVCGMIQGTTRDDADWAHGDSSQPEQVDHTLVGQCKGAGYFMFFNTSLGARGEAALLESRILYPK  
 RKQQCLQFFYKMTGSPADRFEVWVRRDDNAGKVRQLAKIQTFQGSDHNWKIAHVTLNEEKKFRYVFLGT  
 KGDPGNSSGGIYLDITLTETPCPAGVWTIRNISQILENTVKGDKLVSPRFYNSEGYGVGVTLYPNGRIT  
 SNSGFLGLTFHL YSGDNDAILEWPVENRQAIMTILDQEADTRNRMSLTLMFTTSKNQTS SAINGSVIWRD  
 PSKVGVDKDCDCFRSLDWGWQAISHQLLKRRNFLKGDSLIIFVDFKDLTHLNRTEVPASARSTMPRGL  
 LLQGQESPALGESSRKAMLEESLPSLQGRHPSRQKRSVENTGPMEDHNWPQYFRDPCDPNCPQNEGTCV  
 NVKGMASCRCVSGHAFFYAGERCQAMHVHGSLLGLLIGCIAGLIFLTFVTFSTTNGKLRQ

TRTRPLEQKLI SEEDLAANDILDYKDDDDKV

**Restriction Sites:** SgfI-MluI

**Cloning Scheme:**

Cloning sites used for ORF Shuttling:



\* The last codon before the Stop codon of the ORF

**ACCN:** NM\_008585

**ORF Size:** 2283 bp

**OTI Disclaimer:** The molecular sequence of this clone aligns with the gene accession number as a point of reference only. However, individual transcript sequences of the same gene can differ through naturally occurring variations (e.g. polymorphisms), each with its own valid existence. This clone is substantially in agreement with the reference, but a complete review of all prevailing variants is recommended prior to use. [More info](#)

**OTI Annotation:** This clone was engineered to express the complete ORF with an expression tag. Expression varies depending on the nature of the gene.

**Components:** The ORF clone is ion-exchange column purified and shipped in a 2D barcoded Matrix tube containing 10ug of transfection-ready, dried plasmid DNA (reconstitute with 100 ul of water).

**Reconstitution Method:**

1. Centrifuge at 5,000xg for 5min.
2. Carefully open the tube and add 100ul of sterile water to dissolve the DNA.
3. Close the tube and incubate for 10 minutes at room temperature.
4. Briefly vortex the tube and then do a quick spin (less than 5000xg) to concentrate the liquid at the bottom.
5. Store the suspended plasmid at -20°C. The DNA is stable for at least one year from date of shipping when stored at -20°C.

**RefSeq:** [NM\\_008585.3](#)

**RefSeq Size:** 2937 bp

**RefSeq ORF:** 2283 bp

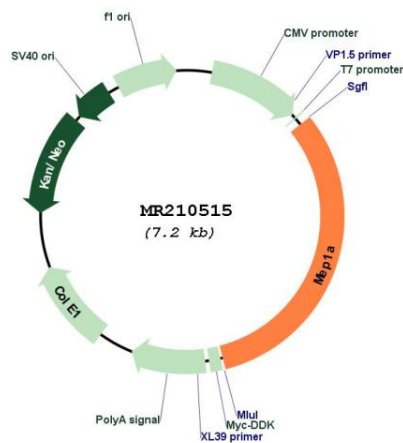
**Locus ID:** 17287

**UniProt ID:** [P28825](#)

**Cytogenetics:** 17 19.73 cM

**MW:** 85.7 kDa

**Product images:**



Circular map for MR210515