

Product datasheet for **MR210483**

Slitrk5 (NM_029273) Mouse Tagged ORF Clone

Product data:

Product Type:	Expression Plasmids
Product Name:	Slitrk5 (NM_029273) Mouse Tagged ORF Clone
Tag:	Myc-DDK
Symbol:	Slitrk5
Synonyms:	2610019D03Rik
Vector:	pCMV6-Entry (PS100001)
E. coli Selection:	Kanamycin (25 ug/mL)
Cell Selection:	Neomycin



[View online »](#)

**ORF Nucleotide
Sequence:**

>MR210483 ORF sequence
 Red=Cloning site Blue=ORF Green=Tags(s)

TTTTGTAATACGACTCACTATAGGGCGGCCGGGAATTCGTCGACTGGATCCGGTACCGAGGAGATCTGCC
 GCC**CGGATCGCC**

ATGCACGTTTGTGCCCCCAGTAACTTTGGAACAGGACCTTACAGAAAAATGCATAGCTGGATGCTGC
 AGACTCTAGCATTGCTGTAACATCTCTCGTCCTTTCCTGTGCAGAAACCATCGATTATTATGGGAAAT
 CTGTGACAATGCATGTCCTTGTGAGGAAAAGGACGGCATTTTAACTGTGAGCTGTGAAAACCGGGGCATC
 ATCAGTCTCTGAAATTAGCCCTCCCCGTTTCCCAATCTATCACCTCTTGTGTCTGAAAACCTTCTGA
 GCCGCCTCTATCCCAATGAGTTTGTAAATTACACAGGGGCTTCAATTTTACATCTGGGTAGCAATGTTAT
 CCAAGACATTGAGACTGGGGCTTTTCATGGGCTGAGGGGTTTGGGCGACTCCATCTAAACAATAATAAA
 TTGGAACCTTCTGCGAGATGATACCTTTCTGGCTTGGATAACTTAGAATACCTGCAGGTCGATTACAATT
 ACATCAGTGTCAATGAACCAATGCTTTTGGGAACTGCACATGCTGCAGGTGCTTATCCTCAATGACAA
 TCTCTTGTGAGGTTACCAACAATCTTTCCGTTTTGTGCCCTTAACGCACTTGGACTTGAGGGGGAAC
 AGGCTGAAACTTCTGCCCTATGTGGGGCTTGTCAACACATGGATAAAGTTGTGGAATTACAGCTGGAGG
 AAAACCCCTGGAATTGCTCCTGTGAACTAATTTCTCTCAAGGATTGGTTGGACAGCATCTCTACTCAGC
 CCTTGTGGGCGATGTGGTCTGTGAGACCCCTTCCGTCTACACGGCAGGGATTTGGACGAGGTATCCAAG
 CAGGAACCTTGTCCAAGGAACTCATTTCTGACTACGAGATGAGGCCACAGACTCCTTTAAGCACCACGG
 GGTATCTACATACCACCCAGCTTCTGTAACCTCTGTGGCCACTTCTTCTCTGCTGTTTACAAACCCCT
 CTTGAAAGCCTCCTAAGGGGACCCGCCAGCCCAACAAACCCAGAGTGCGCCCACTTCTAGGCAGCCCTCT
 AAAGACTTGGGCTACAGTAACTATGGCCCCAGCATAGCCTACCAGACCAATCCCCGGTGCCTTTGGAAT
 GTCTACAGCATGTACTTGAACCTGCAGATCTCTGATCTGGTCTCAATGTCAACTGCCAAGAGCGCAA
 GATCGAGAGCATCGCGGAGCTGCAGCCCAAGCCCTACAATCCCAAGAAAAATGTACCTGACAGAGAATAT
 ATCACTGTTGTGCGCAGAACAGACTTCCCTGGAAGCCACCGGTCTAGACCTCCTGCACCTGGGTAATAACC
 GCATCTCCATGATCCAGGACCGGCCTTTGGGATCTAGGCAACCTGAGACGCCTCTATCTGAATGGCAA
 CAGGATTGAGAGGCTGAGCCAGAATTATTCTATGGCCTGCAGAGCCTGCAGTATCTTCTCCTCCAGTAC
 AATCTCATCCGTGAGATCCAGGCTGGGACTTTTGATCCCGTCCCAACCTCCAGCTGCTATTCTTGAATA
 ACAACCAACTGCAGGCCATGCCTTCCGGTGTCTTCTCTGGCCTGACACTTCTCAGGCTGAACCTGAGGGG
 TAACAGCTTCACTTCTTCCAGTGAGTGGAGTTTGGATCAGCTGACTCCCTCATTCAAATAGATCTA
 CATGACAACCTTGGGATTGTACCTGCGACGTGGTGGCATGAAGCTGTGGATTGAGCAGCTCAAAGTGG
 GGGTGTAGTGGACGAAGTATCTGTAAGGCGCCCAAGAAATTCGAGAGACCTACATGCGGTCCATCAA
 GTCTGAACTGCTATGCCAGACTACTCTGATGTGGTGGTTTCCACGCCACGCCCTTCCATCCAGGTA
 CCATCCAGGACGAACGCAGCGACTCCAGCTGTGAGGTTGAATAGCACTGGGACCCCGCAGGCTTAGGAG
 CTGGGACGGGGCATCTCTGTGCCCTTATCCGTGTTGATCCTCAGTCTGCTGCTGGTTTTTCATCATGTC
 CGTCTTTGTGGCAGCAGGCTTTTCGTGCTGGTTCATGAAACGGAGGAAAAAGAACCCAGAGCGACCACCC
 AGTACCAACAATCCGCCCAACAGCCCCAGCAGCCCCCTCCGAGATGCAGATGCAGCCTGGGGAG
 GAGGAGAGGGGAAAGCCACCATTTGAGGAGCCCCCTACAGCGTCAGCACCATCGAGCCCCGAGAGG
 ACCTACTGTCGCCGGTGCAGGACGC

ACGCGTACGCGGCCGCTCGAGCAGAAACTCATCTCAGAAGAGGATCTGGCAGCAAATGATATCCTGGATT
 ACAAGGATGACGACGATAAGGTTTAA

Protein Sequence:

>MR210483 protein sequence
 Red=Cloning site Green=Tags(s)

MHVCCPPVTLEQDLHRKMHSWMLQTLAFVAVTSLVLSCAETIDYYGEICDNACPCEEKDGILTVSCENRGI
 ISLSEISPPRFPIYHLLLSGNLLSRLYPNEFVNYTGASILHLGNSVIQDIETGAFHGLRGLRRLHLNHNK
 LELLRDDTFLGLDNLEYLQVDYNYISVIEPNAFGKLMQVLIILNDNLLSGLPNNLFRFVPLTHLDRGN
 RLKLLPYVGLLQHMDKVVELQLEENPWNCSEELISLKDWLDSISYSALVGDVVCETPFRLHGRDLDEVSK
 QELCPRKLI SDYEMRPQTPLSTTGYLHTTPASVNSVATSSSAVYKPPKPPKPTRQPNKPRVPTSRQPS
 KDLGYSNYGPSIAYQTKSPVPLECPTACTCNLQISDLGLNVNCQERKIESIAELQPKPYNPKKMYLTENY
 ITVVRRTDFLEATGLDLLHLGNNRISMIQDRAFGDLGNLRLYLNGNRIERLSPELFYGLQSLQYLFQY
 NLIREIQAGTFDPVNLQLLFLNQLQAMP SGVFSGLTLLRLNLRGNSFTSLPVSGLDQLTSLIQIDL
 HDNPWDCTCDVGMKLWIEQLKVGVLVDEVIKAPKFAETYMRSIKSELLCPDYSDVVSTPTPSSIQV
 PSRTNAATPAVRLNSTGTPAGLGAGTGASSVPLSVLILSLLLVFIMSVFAAGFLVLMKRRKKNQSDHT
 STNNSAATAAAAAPSADADAAWGGGEAGKPPFEEPRLLRQHRAPRGPTVAGAGR

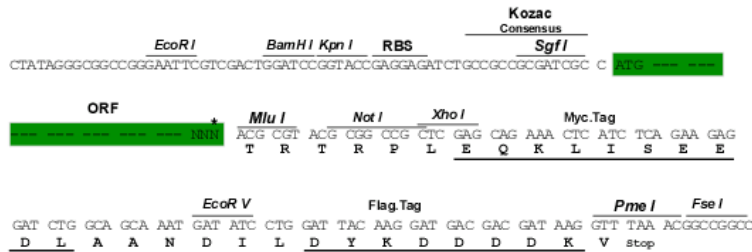
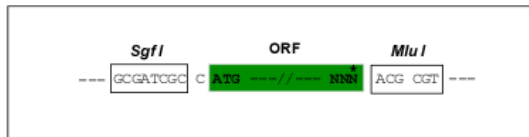
TRTRPLEQKLI SEEDLAANDILDYKDDDDKV

Restriction Sites:

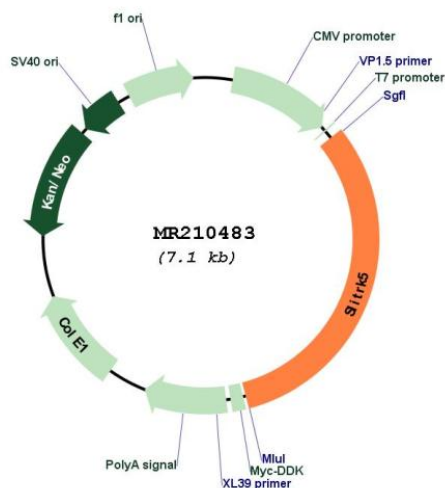
Sgfl-MluI

Cloning Scheme:

Cloning sites used for ORF Shuttling:



* The last codon before the Stop codon of the ORF

Plasmid Map:


ACCN: NM_029273

ORF Size: 2268 bp

OTI Disclaimer: The molecular sequence of this clone aligns with the gene accession number as a point of reference only. However, individual transcript sequences of the same gene can differ through naturally occurring variations (e.g. polymorphisms), each with its own valid existence. This clone is substantially in agreement with the reference, but a complete review of all prevailing variants is recommended prior to use. [More info](#)

OTI Annotation: This clone was engineered to express the complete ORF with an expression tag. Expression varies depending on the nature of the gene.

Components: The ORF clone is ion-exchange column purified and shipped in a 2D barcoded Matrix tube containing 10ug of transfection-ready, dried plasmid DNA (reconstitute with 100 ul of water).

Reconstitution Method:

1. Centrifuge at 5,000xg for 5min.
2. Carefully open the tube and add 100ul of sterile water to dissolve the DNA.
3. Close the tube and incubate for 10 minutes at room temperature.
4. Briefly vortex the tube and then do a quick spin (less than 5000xg) to concentrate the liquid at the bottom.
5. Store the suspended plasmid at -20°C. The DNA is stable for at least one year from date of shipping when stored at -20°C.

RefSeq: [NM_029273.1](#)

RefSeq Size: 4545 bp

RefSeq ORF: 2267 bp

Locus ID: 75409

Cytogenetics: 14 E4
MW: 83.7 kDa
Gene Summary: Suppresses neurite outgrowth.[UniProtKB/Swiss-Prot Function]