

Product datasheet for **MR210476**

Ece1 (NM_199307) Mouse Tagged ORF Clone

Product data:

Product Type:	Expression Plasmids
Product Name:	Ece1 (NM_199307) Mouse Tagged ORF Clone
Tag:	Myc-DDK
Symbol:	Ece1
Synonyms:	AW322500; ECE-1; ECE-1a; ECE-1b; ECE-1d
Mammalian Cell Selection:	Neomycin
Vector:	pCMV6-Entry (PS100001)
E. coli Selection:	Kanamycin (25 ug/mL)



[View online »](#)

ORF Nucleotide Sequence:

>MR210476 ORF sequence
 Red=Cloning site Blue=ORF Green=Tags(s)

TTTTGTAATACGACTCACTATAGGGCGGCCGGGAATTCGTCGACTGGATCCGGTACCGAGGAGATCTGCC
 GCC**CGGATCGCC**

ATGTCAACCTACAAGCGGGCCACGCTGGACGAAGAGGATCTGGTGGACTCACTCTCCGAGGGCGATGTGT
 ACCCCAATGGCCTACAGGTGAACCTCCGCAGCTCCCGAGCGGCCAGAGGTGCTGGGCAGCTCGGACCTC
 GGTGGAGAAGCGGCTGGTGGTGCTGGTACGCTTCTGGCGGCAGGGTTGGTGGCCTGCCTGGCAGCCCTG
 GGCATCCAGTACCAGACAAGAAGCCTCCGGTATGTCTGACGGAGGCTGTGTCTCAGTGACCAGCTCTA
 TCCTAACTCCATGGACCCACAGTAGACCCGTGCCAGGACTTCTCAGCTACGCCTGCGGGGGCTGGAT
 CAAGGCCAACCCCGTGCCGATGGCCACTCAGCTGGGGAACCTTCAGCAACCTCTGGGAACACAACCAA
 GCTGTCATCAAGCATCTACTGAAAATGCCACGGCCAGTGTGAGCGAGGCAGAGAGAAAAGCCCAAGTGT
 ACTACCGTGCCTGATGAACGAACTAGGATTGAGGAGCTTCGGCCAAGCCCTGATGGAGCTGATTGA
 GAAGCTGGGAGGCTGGAATATCACAGGACCTGGGCCAAGGACAACCTCCAGGACACACTGCAGGTGGTC
 ACAGCTCACTACCGCACCTCACCTTCTTCTGTATTATGTCAGCGCGGACTCCAAGAATCCAACAGCA
 ATGTGATCCAGGTGGACCACTCCGGCTTGGCTTGCCTCCAGAGACTATTACCTGAACAAGACAGAGAA
 TGAAAAGGTCTGACTGGATACCTGAACTACATGGTCCAGCTGGGGAAGCTCCTGGGCGGTGGGACGAG
 GATGCCATCCGGCCACAGATGCAGCAGATCCTGGATTTTGGAGCGGCGCTGGCCAACATCACCATCCCC
 AGGAGAAGCGCAGGGATGAAGAAGTCACTACCAAAAGTACGGCTGCCGAGCTGCAGACCTTGGCACC
 TGCCATCAACTGGTTACCTTTCTGAACACCATTTTTACCCAGTGGAGATCAATGAGTCTGAGCCAATC
 GTGGTCTACGACAAGGAATACTTGAGCAAGTCTCCACCCTCATCAACAACACCGACAAAATGTCTGTCA
 ACAACTACATGATGTGGAACCTGGTACGCAAAACAAGTCTTCCCTGGACCAGCGCTTTCAGGACGCCGA
 CGAGAAGTTCATGGAGGTTATGTATGGGACGAAGAAGACCTGTATTCCCCGCTGGAAGTTTTGTGTGAGT
 GACACGGA AAAACACCTGGGCTTTGCCCTGGGACCCATGTTTGTGAAAGCAACCTTTGCAGAAGACAGTA
 AGAATATAGCCAGTGAGATCATCATGGAGATCAAGAAGGCGTTTGGAGAGAGTCTGAGCACTCTGAAATG
 GATGGATGAAGAGACTCGGAGATCAGCCAAGGAGAAGGCGGATGCTATCTACAACATGATAGGCTACCCC
 AACTTCATCATGGACCCCAAGGAGCTGGACAAAGTCTTCAATGACTACACAGCAGTTCTGATCTCTACT
 TTGAGAACGCCATGCGCTTTTTCAACTTCTCATGGAGGGTACAGCTGACCAGCTCAGAAAAGCTCCCAA
 CAGAGATCAGTGGAGTATGACGCCGCCATGGTGAACGCTTACTACTCGCCACCAAGAACGAGATCGTG
 TTTCCAGCTGGAATACTGCAGGGCCATTTTATACCCGCTTTCACCCAACGCTTGAACCTCGGTGGCA
 TTGGTGTGCTAGTGGGCCACGAGCTGACTACGCTTTCGATGATCAAGGTCGGGAGTACGACAAGGATGG
 GAACCTTCGACCCTGGTGGAAAGAACTCGTCCGTGGAGGCGTTCAAGCAGCAGACGGAGTGCATGGTGCAG
 CAATACAGCAACTACAGCGTGAACGGGGAGCCCGTGAACGGTTCGACACACCCTCGGGGAGAACATTGCCG
 ACAACGGGGGACTCAAGGCGGCCACCGGGCGTACCAGAACTGGGTAAAGAAGAACGGAGCTGAGCAGAC
 GCTGCCACCCCTGGTCTCACCAGCAACCAGCTCTTCTCCTAGGATTTGCACAGGTCTGGTGTCTGTGTC
 CGCACACCTGAGAGCTCCACGAAGGCCATCACGGATCCGCACAGCCCTCTCGCTCCGGGTGATCG
 GCTCGCTCTCAACTCCAAGGAGTCTCAGAACAACCTTTCGCTGCCCGCTGGCTCTCCATGAACCTCA
 TCACAAGTGCGAAGTCTGG

ACGCGTACGCGGGCGCTCGAGCAGAAACTCATCTCAGAAGAGGATCTGGCAGCAAATGATATCCTGGATT
 ACAAGGATGACGACGATAAGGTTTAA

Protein Sequence: >MR210476 protein sequence
 Red=Cloning site Green=Tags(s)

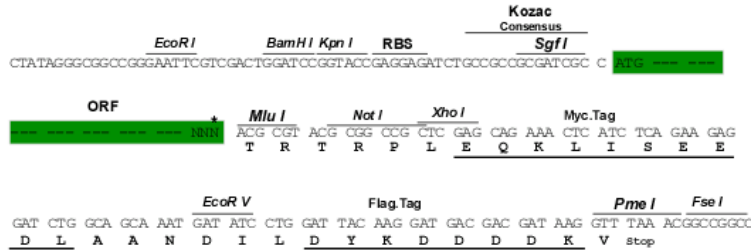
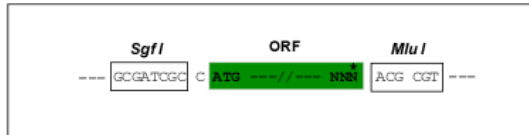
MSTYKRATLDEEDLVDSLSEGDVYPNGLQVNFRRSSRSQRCWAARTSVEKRLVVLVTLAAGLVACLAAL
 GIQYQTRTPPVCLTEACVSVTSSILNSMDPTVDPQDFFSYACGGWIKANPVPDGHRSWGTFSNLWEHNQ
 AVIKHLLNATASVSEARKAQVYYRACMNETRIEELRAKPLMELIEKLGWNIITGPWAKDNFQDTLQVV
 TAHYRTSPFFSVYVSADSKNSNSNVIQVDQSGGLPSRDYYLNKTENEKVL TGYLNYMVQLGKLLGGGDE
 DAIRPQMQQILD FETALANITIPQEKRRDEELIYHKVTA AELQTLAPAINWL PFLNTIFYPVEINESEPI
 VVYDKEYLRQVSTLINNTDKCLLNMYMMWNLVRKTSSFLDQRFQDADEKFMEVMYGTKKTCIPRWKFCVS
 DTENNLGFALGPMFVKATFAEDSKNIASEIIMEIKKA FEESLSTLKWMD EETRRSAKEKADAIYNMIGYP
 NFIMDPKELDKVFN DYTAVPDL YFENAMRFFNF SWRV TADQLRKAPNRDQWSMTPPMVNAYYSPTKNEIV
 FPAGILQAPFYTRSSPNALNFGGIGVVVGH E LTHAFDDQGREYDKGNLRPWWKNSSVEAFKQQTECMVQ
 QYSNYSVNGEPVNGRHTLGENIADNGGLKAAYRAYQNWVKNGAEQTLPTLGLTSNQLFFLGFAQVWCSV
 RTPESSHEGLITDPHSPSRFRVIGLSNSKEFSEHFRCPPGSPMNP HHKCEVW

TRTRPLEQKLISEEDLAANDILDYKDDDDKV

Restriction Sites: SgfI-MluI

Cloning Scheme:

Cloning sites used for ORF Shuttling:



* The last codon before the Stop codon of the ORF

ACCN: NM_199307

ORF Size: 2262 bp

OTI Disclaimer: The molecular sequence of this clone aligns with the gene accession number as a point of reference only. However, individual transcript sequences of the same gene can differ through naturally occurring variations (e.g. polymorphisms), each with its own valid existence. This clone is substantially in agreement with the reference, but a complete review of all prevailing variants is recommended prior to use. [More info](#)

OTI Annotation: This clone was engineered to express the complete ORF with an expression tag. Expression varies depending on the nature of the gene.

Components: The ORF clone is ion-exchange column purified and shipped in a 2D barcoded Matrix tube containing 10ug of transfection-ready, dried plasmid DNA (reconstitute with 100 ul of water).

Reconstitution Method:

1. Centrifuge at 5,000xg for 5min.
2. Carefully open the tube and add 100ul of sterile water to dissolve the DNA.
3. Close the tube and incubate for 10 minutes at room temperature.
4. Briefly vortex the tube and then do a quick spin (less than 5000xg) to concentrate the liquid at the bottom.
5. Store the suspended plasmid at -20°C. The DNA is stable for at least one year from date of shipping when stored at -20°C.

RefSeq: [NM_199307.2](#), [NP_955011.1](#)

RefSeq Size: 4856 bp

RefSeq ORF: 2262 bp

Locus ID: 230857

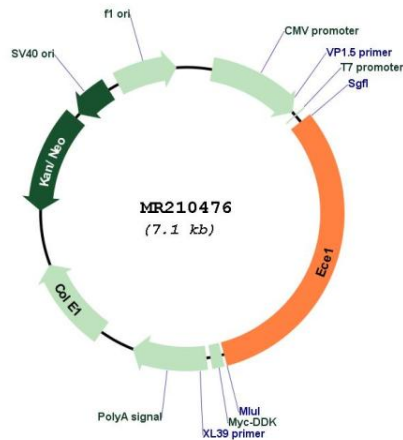
UniProt ID: [Q4PZA2](#)

Cytogenetics: 4 D3

MW: 85.5 kDa

Gene Summary: Converts big endothelin-1 to endothelin-1.[UniProtKB/Swiss-Prot Function]

Product images:



Circular map for MR210476