

Product datasheet for **MR210469**

Aoc1 (NM_029638) Mouse Tagged ORF Clone

Product data:

Product Type:	Expression Plasmids
Product Name:	Aoc1 (NM_029638) Mouse Tagged ORF Clone
Tag:	Myc-DDK
Symbol:	Aoc1
Synonyms:	1600012D06Rik; Abp1; DAO
Mammalian Cell Selection:	Neomycin
Vector:	pCMV6-Entry (PS100001)
E. coli Selection:	Kanamycin (25 ug/mL)



[View online »](#)

**ORF Nucleotide
Sequence:**

>MR210469 ORF sequence
 Red=Cloning site Blue=ORF Green=Tags(s)

TTTTGTAATACGACTCACTATAGGGCGGCCGGGAATTCGTCGACTGGATCCGGTACCGAGGAGATCTGCC
 GCC**CGCATCGCC**

ATGAGTCTGGCCTTCGGCTGGGCAGCTGTCATATTACTTCTACAGACGGCAGACACACCATCTGCTGTGA
 CGACTCCTCATGACAAAGCAAGGATATTTGCAGACCTGAGCCCCAGGAGATAAAGGCTGTGCACAGCTT
 CCTGATGAGCAGAAAGGAGCTGGGGCTGGAGTCATCCAAGAATCTGACTTTGGCCAAGAACTCCGTGTTT
 CTCATTGAGATGCTACTGCCAAAAAGAAGAATGTGCTGAAATTTTGGATGAAGGAAGAAAAAGTCCTG
 TCCGGGAAGCCAGGGCCATCATCTTCTTCGGTGCCAGGATCACCCCAATGTCAGTGTGCTGTGGG
 GCCCTGCCACGGCCCTGCTATGTTCAAGCACTGTCCCCAGGCCAGGGCACCATCTGCTCTGGTCATCA
 AGACCCATCTCCACAGCGGAGTATGACCTCTACCACATGCTGAACAGAGCCATCACGCCTCTGCACC
 AGTTTTCTTGGACTACTGGCTTCTCATTCTAGGCTGCGATGACCGTTCTTGACTTTACGGATGT
 AGCGCCCGTGGTGTGGAGTCTGGTCAGCGTAGAAGCTGGCTTATCGTGCAGCGTATGTGAAGGCTAC
 TTCTGATCCCACAGGGCTGGAGATCCTGTAGATCATAGCAGCACAGATGTCCAGGACTGGAGAGTGG
 AACAGCTCTGGTATAACGGCAAGTTCTACAACAGCCCAGAGGAAGTGGCTCAGAAATACGCAAGTGGAGA
 AGTGGAGGCAGTGGTTCTGGAGGAAGTGGTTCTCGAGGACCCACTGCCGGGTGCCACAGAGCAGCCACCA
 CTCTTCTCTTCTACAAGCCCCGGGGGAATCCACACGCCAGTCACTGTTGAGGCCCCACCGTTGTCC
 AGCCAGTGGCCCCAGATATAAGCTAGAGGGCAACGTTGTGCTCTACGGAGACTGGAGCTTCTTACC
 GCTAAGATCCTCTTCTGGGCTGCAGATCTTAAATGTAAGTCTTTGGAGGTGAGCGTGTGCCTATGAGGTC
 AGCGTGCAGGAGGCTGTGGCACTATATGGAGGACACACCTGCAGGCATGCAGACTAAGTATATTGATG
 TTGGTTGGGGCTGGGCAGTGTCACTCACGAGCTGGCCCTGGTATTGACTGTCCAGAGACCGCTACTTT
 CCTGGATGCTTTCCACTATTATGACAGCGATGGCCCTGTCTTTATCCACGCGCTGTGCCTCTTTGAG
 ATGCCACAGGGTACCCCTTAGGCGCCACTTTGACTCAAACCTTTAAAGGTGGCTTCAACTTCTATGCGG
 GTTTGAAAGGATATGTGCTGGTGTACGGACGACATCGACAGTCTATAATTATGACTATATCTGGGATTT
 CATCTTACCCTAATGGTGTGATGGAGACCAAGATGCATGCCACTGGATATGTCCACGCAACCTTCTAC
 ACCCTGAGGGACTGCGCCATGGCACTCGCTTACAAACCCACCTGCTTGGCAACATCCACACCCACCTGG
 TGCACTACCGTGTGACCTGGACGTGGCAGGCACCAAGAAGCAGCTTCCGGACACTGAAGACAAAGCTGGA
 AAACATCACCAATCCCTGGAGCCCAAGTCACTCCCTAGTCCAGCCACACTTGAGCAGACCCAGTACTCC
 CACGAGCACAGGCTGCATTCGGCTTTGGACAGACTCTGCCAAGTACCTGCTTTAGCAGCCCCAAA
 AGAACCGTTGGGGCCACAGGCGGAGTACCGCCTGCAGATCCACTCTATGGCTGAGCAGGTGCTACCACC
 AGGTTGGCAGGAGGAGCGGGCTGTCACTTGGGCCAGGTATCCCTTGGCTGTGACAAAGTATCGGGAATCT
 GAACGCTACAGCAGCAGCCTCTACAACCAGAATGACCCCTGGGATCCCCCTGTGGTTTTTGGAGGTTCC
 TTCGGAACAACGAGAATATTGAAAATGAGGATCTGGTGGCCTGGGTGACAGTAGGCTTCTGCACATCCC
 TCACTCAGAGGATGTCCCAACACAGCCACACCTGGAAATTGTGTGGGCTTCTTGATCCGGCCATTCAAC
 TTCTTCGAGGAGGATCCATCCCTGGCATCTAGAGACACTGTGATAGTGTGGCCCCAGGACAACGGTCTCA
 ACCATGTTCCAGCGCTGGATCCCTGAGAACAGGGACTGCTTGGTGTCTCTCTTTTAGCTACAATGGGAC
 CTACAAGCCTGTG

ACGCGTACGCGGCCGCTCGAGCAGAAACTCATCTCAGAAGAGGATCTGGCAGCAAATGATATCCTGGATT
 ACAAGGATGACGACGATAAGGTTTAA

Protein Sequence: >MR210469 protein sequence
Red=Cloning site Green=Tags(s)

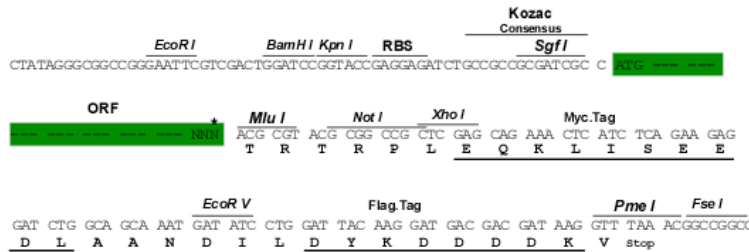
MSLAFGWAIVILLQLTADTPSAVTTPHDKARIFADLSPQEIKAVHSFLMSRKELGLESSKNLTLAKNSVFLIEMLLPKKKNVLKFLDEGRKSPVREARAIIFFGAODHPNVTEFAVGPLPRPCYVQALSPRPGHHLSSWRPISTAEYDLLYHMLNRAITPLHQFFLDTTGFSLGCDDRFLTFDVA PRGVE SGQRRSWLIVQRYVEGYFLHPTGLEILVDHSSTDVQDWRVEQLWYNGKFYNSPEELAQKYAVGEVAVVLEEVVLEDPLPGATEQPPLFSSYKPRGEFHTPVTVAGPHVVQPSGPRYKLEGNVVL YGDWSFSYRLRSSGLQIFNVLFGGERVAYEVSVQEAVALYGGHTPAGMQTKYIDVGWGLGSVTHELAPGIDCPETATFLDAFHYYDSGDPVLYPRALCLFEMPTGVPLRRHFDNSFKGGFNFYAGLKGYVVLVLRRTTSTVYNYDYIWFIFYPNGVMETKMHTGYVHATFYTPEGLRHGTRLQTHLLGNIHTHLVHYRVDLDVAGTKNSFRTLKTKLENITNPWSPSHSLVQPTLEQTQYSHEHQAAFRTGQTLPKYLLFSSPQKNRWGHRRSYRLQIHSMAEQVLP PGWQEERAVTWARYPLAVTKYRESERYSSSLYNQNDPWPDPVVFEEFLRNNENIENEDLVAVVTVGFLHIPHSEDVPNTATPGNCVGLIRPFNFFFEEDPSLASRDTVIVWPQDNGLNHVQRWIPENRDCLVSPPF SYNGTYKPV

TRTRPLEQKLISEEDLAANDILDYKDDDDKV

Restriction Sites: SgfI-MluI

Cloning Scheme:

Cloning sites used for ORF Shuttling:



* The last codon before the Stop codon of the ORF

ACCN: NM_029638

ORF Size: 2256 bp

OTI Disclaimer: The molecular sequence of this clone aligns with the gene accession number as a point of reference only. However, individual transcript sequences of the same gene can differ through naturally occurring variations (e.g. polymorphisms), each with its own valid existence. This clone is substantially in agreement with the reference, but a complete review of all prevailing variants is recommended prior to use. [More info](#)

OTI Annotation: This clone was engineered to express the complete ORF with an expression tag. Expression varies depending on the nature of the gene.

Components: The ORF clone is ion-exchange column purified and shipped in a 2D barcoded Matrix tube containing 10ug of transfection-ready, dried plasmid DNA (reconstitute with 100 ul of water).

- Reconstitution Method:**
1. Centrifuge at 5,000xg for 5min.
 2. Carefully open the tube and add 100ul of sterile water to dissolve the DNA.
 3. Close the tube and incubate for 10 minutes at room temperature.
 4. Briefly vortex the tube and then do a quick spin (less than 5000xg) to concentrate the liquid at the bottom.
 5. Store the suspended plasmid at -20°C. The DNA is stable for at least one year from date of shipping when stored at -20°C.

RefSeq: [NM_029638.1](#), [NP_083914.1](#)

RefSeq Size: 2673 bp

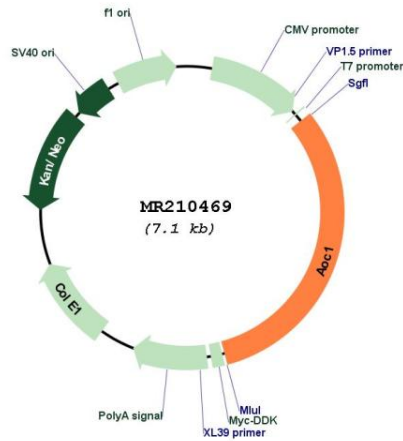
RefSeq ORF: 2271 bp

Locus ID: 76507

Cytogenetics: 6 23.78 cM

MW: 85.4 kDa

Product images:



Circular map for MR210469