

Product datasheet for MR210461L4

Ezh1 (NM_007970) Mouse Tagged Lenti ORF Clone

Product data:

Product Type:	Expression Plasmids
Product Name:	Ezh1 (NM_007970) Mouse Tagged Lenti ORF Clone
Tag:	mGFP
Symbol:	Ezh1
Synonyms:	ENX-2
Mammalian Cell Selection:	Puromycin
Vector:	pLenti-C-mGFP-P2A-Puro (PS100093)
E. coli Selection:	Chloramphenicol (34 ug/mL)
ORF Nucleotide Sequence:	The ORF insert of this clone is exactly the same as(MR210461).
Restriction Sites:	SgfI-MluI
Cloning Scheme:	

Cloning sites used for ORF Shuttling:



* The last codon before the Stop codon of the ORF.

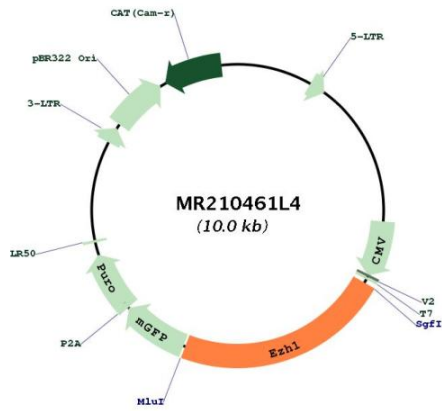
ACCN:	NM_007970
ORF Size:	2253 bp



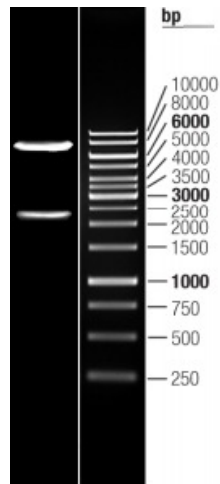
[View online »](#)

OTI Disclaimer:	The molecular sequence of this clone aligns with the gene accession number as a point of reference only. However, individual transcript sequences of the same gene can differ through naturally occurring variations (e.g. polymorphisms), each with its own valid existence. This clone is substantially in agreement with the reference, but a complete review of all prevailing variants is recommended prior to use. More info
OTI Annotation:	This clone was engineered to express the complete ORF with an expression tag. Expression varies depending on the nature of the gene.
Components:	The ORF clone is ion-exchange column purified and shipped in a 2D barcoded Matrix tube containing 10ug of transfection-ready, dried plasmid DNA (reconstitute with 100 ul of water).
Reconstitution Method:	<ol style="list-style-type: none">1. Centrifuge at 5,000xg for 5min.2. Carefully open the tube and add 100ul of sterile water to dissolve the DNA.3. Close the tube and incubate for 10 minutes at room temperature.4. Briefly vortex the tube and then do a quick spin (less than 5000xg) to concentrate the liquid at the bottom.5. Store the suspended plasmid at -20°C. The DNA is stable for at least one year from date of shipping when stored at -20°C.
RefSeq:	NM_007970.2 , NP_031996.1
RefSeq Size:	4224 bp
RefSeq ORF:	2253 bp
Locus ID:	14055
UniProt ID:	P70351
Cytogenetics:	11 64.37 cM
Gene Summary:	This gene encodes a member of the Polycomb-group (PcG) family. The encoded protein is interchangeable with the related Enhancer of zeste 2 (Ezh2) protein as a core component of the polycomb repressive complex 2 (PRC2), which methylates histone H3 at lysine 27 and results in the transcriptional repression of affected target genes. This complex is involved in carrying out cell-fate decisions during embryonic stem cell differentiation. [provided by RefSeq, Sep 2014]

Product images:



Circular map for MR210461L4



Double digestion of MR210461L4 using SgfI and MluI