

Product datasheet for **MR210456**

Mme (NM_008604) Mouse Tagged ORF Clone

Product data:

Product Type:	Expression Plasmids
Product Name:	Mme (NM_008604) Mouse Tagged ORF Clone
Tag:	Myc-DDK
Symbol:	Mme
Synonyms:	6030454K05Rik; C85356; CALLA; CD10; NEP; SFE
Mammalian Cell Selection:	Neomycin
Vector:	pCMV6-Entry (PS100001)
E. coli Selection:	Kanamycin (25 ug/mL)



[View online »](#)

ORF Nucleotide
Sequence:

>MR210456 representing NM_008604
 Red=Cloning site Blue=ORF Green=Tags(s)

TTTTGTAATACGACTCACTATAGGGCGGCCGGAATTCGTCGACTGGATCCGGTACCGAGGAGATCTGCC
 GCC**CGGATCGCC**

ATGGGAAGATCAGAAAGTCAGATGGATATAACTGATATCAATGCTCCAAAGCCAAAGAAGAAACAGCGAT
 GGAATCCCTGGAGATCAGCCTCTCTGTCTTGTCTTGCTCCTGACTATCATAGCCGGTGACAATGATCGC
 TCTCTATGCAACCTATGATGATGGCATTGCAAAATCATCAGACTGCATAAAATCAGCTGCTCGACTGATT
 CAGAATATGGATGCCTCTGTTGAGCCATGTACAGACTTCTTCAAGTATGCTTGTGGAGGCTGGTTGAAAC
 GCAACGTCATTCCCGAGACCAGTCCCGATACAGTAATTTTACATTTTAAAGAGATGAGCTAGAAGTCAT
 TTTGAAAGATGTCCTTCAAGAACCACAAACTGAAGACATAGTAGCAGTGCAGAAAGCAAAAACCTTGTAC
 AGATCGTGATAAATGAGTCTGCTATTGATAGCAGAGGCGGACAACCTCTACTCAAAGTGTACCAGATA
 TATATGGTGGCCAGTAGCATCAGATAACTGGGATCAAACATATGGCACTTCTTGGACAGCTGAGAAATC
 CATTGCACAAGTGAATTTAAATATGGGAAAAAGTCTCATTAAATTTTTTTGTTGGCAGTATGATAAG
 AATTCTACCCAGCATATAATTCATTTTACCAGCCTCGACTTGGCTCCCTTCCAGAGACTACTATGAGT
 GCACTGGAATATATAAGAGGCTTGACAGCATATGTGGATTTTATGATTCTGTGGCCAGACTGATTCCG
 TCAGGAACAAAGTTTGCCTATTGATGAAAACAGCTCTCTTTGAAAATGAATAAAGTTATGGAATTGGAA
 AAAGAAATGGCAATGCTACAACATAACAGAGACCGAAATGACCCAATGCTGCTTTATAACAAAATGA
 CATTGGCCAAGCTGCAGAAACATTTCCCTGGAGGTCAATGGGAAGTCAATCAGCTGGTCAAATTTAC
 AAATGAAATCATGTCAACTGTGAATATTAATATCAAAATGAGGAAGAAGTTGTTGTCTATGCTCCAGAA
 TATTTAACCAAATTAAGCCTATTCTTACCAAATATTCTCCAGAGATCTTCAAATTTAATGTCCTGGA
 GGTTCAATGGATCTTGTAAAGCAGCCTCAGCCGAAACTACAAGGAGTCCAGAAATGCTTCCGCAAGGC
 CCTTTATGGGACTACATCAGAAACTGCAACATGGAGACGGTGTGCTAACTACGTCATGGGAATATGGAG
 AATGCTGTGGGAGGCTTTATGTGGAAGCGCTTTTGTGGAGAGCAAGCACGTGGTTGAAGACTTGA
 TTGCACAAATCCGGGAAGTTTTTATTAGACTTTGGATGACCTTACTTGGATGGATGCTGAGACAAAAAA
 GAAAGCTGAAGAAAAGGCCTTGGCAATTAAGAAAGGATTGGCTATCCTGATGACATCATTTCCAATGAG
 AACAACTGAATAATGAGTATCTTGAGTTGAACTACAGGGAAGATGAATACTTTGAGAACATAATTCAAA
 ATTTGAAATTCAGCCAAAGCAAGCAGCTAAAGAAGCTCCGAGAAAAAGTGGACAAAGATGAGTGGATAAG
 TGGAGCAGCTGTAGTCAATGCATTTTATCCTCAGGCCGAAATCAGATAGTCTTCCCGCTGGCATTG
 CAGCCCCATTCTCAGTCTCAGCAATCCAATCATTGAACTATGGGGCATCGGCATGGTCAATGGAC
 ATGAAATCACACATGGATTTGATGACAATGGAAGAAATTTCAATAAAGATGGAGACCTCGTTGACTGGT
 GACGCAGCAGTCCGCAAATAATTTAAAGACCAATCCAGTGTATGGTATACCAGTATGGAACTTTTCC
 TGGGACCTAGCAGGTGGACAGCATCTCAATGGAATTAATACACTAGGAGAAAAACATTGCTGATAATGGAG
 GTATTGGCCAAGCATACAGAGCCTATCAGAATTATGTTAAAAAGAATGGTGAAGAAAAATTAATCCCTGG
 ACTTGACCTCAATCACAAACATATTTTCTGAACTTTGCCAGGTGTGGTGTGGGACCTACCGGCCA
 GAGTATGCAGTCAATTTATTAACAGATGTACACAGTCTGGAATTTTCAAGTATTTGGGACTTTGC
 AGAACTCTGCCGAGTTTGCAGATGCCTTTCATTGCCGCAAGAATTCATACATGAATCCAGAAAGGAAATG
 TCGGGTTTGG

ACGCGTACGCGGCCGCTCGAGCAGAAACTCATCTCAGAAGAGGATCTGGCAGCAAATGATATCCTGGATT
 ACAAGGATGACGACGATAAGGTTTAA

Protein Sequence: >MR210456 representing NM_008604
 Red=Cloning site Green=Tags(s)

MGRSESQMDITDINAPKPKKKQRWTPLEISLSVLVLLLTIIAVTMIALYATYDDGICKSSDCIKSAARLI
 QNMDASVEPCTDFFKYACGGWLKRNVIPETSSRYSNFDILRDELEVILKDVLPQPKTEDIVAVQKAKTLY
 RSCINESAIDSRGGQPLKLLPDIYGWVPASDNWDQTYGTSWTAEKSIQQLNSKYGKVLINFFVGTDDK
 NSTQHIHFDPRLGLPSRDYECTGIYKEACTAYVDFMISVARLIRQEQLPIDENQLSLEMNKVMELE
 KEIANATTKPEDRNDPMLLYNKMTLAKLQNNFSLEVNGKSFWSNFTNEIMSTVNINIQNEEVVVYAPE
 YLTKLKPILTKYSPRDLQNLMSWRFIMDLVSSLRNYKESRNAFRKALYGTTSSETATWRRRCANYVNGME
 NAVGRLYVEAAFAGESKHVVEDLIAQIREVFIQTLDDLWMDAETKKKAEEKALAIKERIGYPDDIISNE
 NKLNNEYLELNYREDEYFENIIQNLKFSQSKQLKLRKVDKDEWISGAAYVNAFYSSGRNQIVFPAGIL
 QPPFFSAQQSNLNYGGIGMVGHEITHGFDDNGRNFNKDGLVDWWTQQSANFKDQSQCMVYQYGNFS
 WDLAGGQHLNGINTLGENIADNGGIGQAYRAYQNYVKNGEEKLLPGLDLNHKQLFFLNFAQVWCCTYRP
 EYAVNSIKTDVHSPGNFRIIGTLQNSAEFADAFHCRKNSYMNPERKCRVW

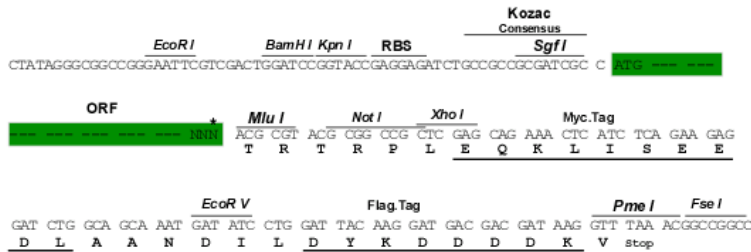
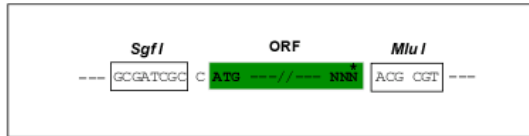
TRTRPLEQKLISEEDLAANDILDYKDDDDKV

Chromatograms: https://cdn.origene.com/chromatograms/mm9013_d04.zip

Restriction Sites: SgfI-MluI

Cloning Scheme:

Cloning sites used for ORF Shuttling:



* The last codon before the Stop codon of the ORF

ACCN: NM_008604

ORF Size: 2250 bp

OTI Disclaimer: Due to the inherent nature of this plasmid, standard methods to replicate additional amounts of DNA in E. coli are highly likely to result in mutations and/or rearrangements. Therefore, OriGene does not guarantee the capability to replicate this plasmid DNA. Additional amounts of DNA can be purchased from OriGene with batch-specific, full-sequence verification at a reduced cost. Please contact our customer care team at custsupport@origene.com or by calling 301.340.3188 option 3 for pricing and delivery.

The molecular sequence of this clone aligns with the gene accession number as a point of reference only. However, individual transcript sequences of the same gene can differ through naturally occurring variations (e.g. polymorphisms), each with its own valid existence. This clone is substantially in agreement with the reference, but a complete review of all prevailing variants is recommended prior to use. [More info](#)

OTI Annotation: This clone was engineered to express the complete ORF with an expression tag. Expression varies depending on the nature of the gene.

Components: The ORF clone is ion-exchange column purified and shipped in a 2D barcoded Matrix tube containing 10ug of transfection-ready, dried plasmid DNA (reconstitute with 100 ul of water).

Reconstitution Method:

1. Centrifuge at 5,000xg for 5min.
2. Carefully open the tube and add 100ul of sterile water to dissolve the DNA.
3. Close the tube and incubate for 10 minutes at room temperature.
4. Briefly vortex the tube and then do a quick spin (less than 5000xg) to concentrate the liquid at the bottom.
5. Store the suspended plasmid at -20°C. The DNA is stable for at least one year from date of shipping when stored at -20°C.

RefSeq: [NM_008604.4](#)

RefSeq Size: 4240 bp

RefSeq ORF: 2253 bp

Locus ID: 17380

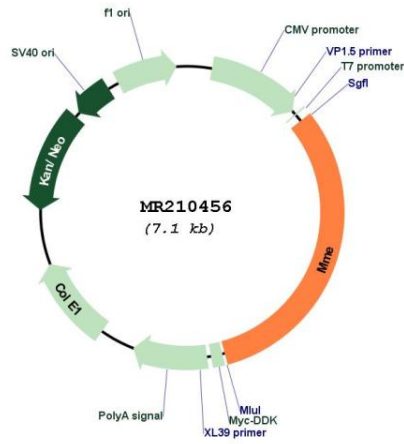
UniProt ID: [Q61391](#)

Cytogenetics: 3 29.97 cM

MW: 86.2 kDa

Gene Summary: Thermolysin-like specificity, but is almost confined on acting on polypeptides of up to 30 amino acids. Biologically important in the destruction of opioid peptides such as Met- and Leu-enkephalins by cleavage of a Gly-Phe bond. Able to cleave angiotensin-1, angiotensin-2 and angiotensin 1-9. Involved in the degradation of atrial natriuretic factor (ANF) (By similarity). Displays UV-inducible elastase activity toward skin preelastic and elastic fibers (PubMed:20876573).[UniProtKB/Swiss-Prot Function]

Product images:



Circular map for MR210456