

## Product datasheet for **MR210450**

### Ascc2 (NM\_029291) Mouse Tagged ORF Clone

#### Product data:

Product Type:	Expression Plasmids
Product Name:	Ascc2 (NM_029291) Mouse Tagged ORF Clone
Tag:	Myc-DDK
Symbol:	Ascc2
Synonyms:	1700011111Rik; 2610034L15Rik; AI482016; ASC1p100; AW046480
Mammalian Cell Selection:	Neomycin
Vector:	pCMV6-Entry (PS100001)
E. coli Selection:	Kanamycin (25 ug/mL)



[View online »](#)

**ORF Nucleotide Sequence:**

>MR210450 representing NM\_029291  
 Red=Cloning site Blue=ORF Green=Tags(s)

TTTTGTAATACGACTCACTATAGGGCGGCCGGGAATTCGTCGACTGGATCCGGTACCGAGGAGATCTGCC  
 GCC**CGGATCGCC**

ATGCCAGCTCTGCCCTGGACCACTCCAGATCACCCACAAGACCCGAAGACAGGACAGCCGAAGACTT  
 CAGCAGCGCTGAACCCTGAGCAGAAGGCAGACCGGTATTTTGTGTGTACAAACCGCCCTAAAGACAA  
 CATTCCC GCCCTAGTGGAGGAGTACCTGGAACGTGCCAACTTCGTAGCTAATGACCTCGACTGGCTCCTG  
 GCCTTGCCTCACGATAAATTCTGGTGCCAGGTTATTTTGTGAGACCCTGCAGAAGTGCCTGGACTCCT  
 ACCTGCACTATGTACCCGAAAGTTTGTAGTGGGTGGCCCGACCCCTGAGGTGGCTGACATGCAGAA  
 TCACCTGCACCGGAGTGTTCCTCACCTTCTCCGAATGTCCACGCACAAGGAATCCAAAGACCACTTC  
 ATTTCTCCATCTGCATTTGGAGAAATCCTCTACAACAACCTTCTCTTTGACATCCCGAAGATCCTGGACC  
 TCTGTGTGCTCTTTGGAAAAGGCAACTCACCCTGCTCCAGAAAATGATAGGAAACATATTTACCCAGCA  
 GCCAAGTTACTATACTGACCTGGATGAAACCATTCCCACCATACTTCAGGTCTTCAGCAATATCCTCCAG  
 CACTGTGGTTTGAAGGGGATGGGACCAGCACACCCCAAGAACTCGGGGAGAGGAGTCCGTTGACCC  
 CCAGTGACATGCCTCTCTTGAATTAAAGGACATTGTTCTCTACCTGTGTGACACCTCCACCACACTCTG  
 GGCTTTCTGGACATCTTTCTTTGGCCTGCCAAACCTTCCAGAAACATGACTTTTGTACAGACTAGCT  
 TCCTTTTATGAGATGGCAATTCGGAAATGGAGTCTGCAATTAAGAAGAGGAGGCTTGAAGACAGCAAGC  
 TCCTGGGTGACATGTGGCAGAGGCTCTCCCATTCGAAGAAGAAGCTAATGGAGGTGTTTCACATCATCT  
 GAACCAGATCTGCCTGCTTCCATTCTAGAGAGCAGCTGTGACAACATTCAGGCTTCATTGAAGAAATC  
 CTTCAAATCTTCAGCTCTTTACTGCAGGAAAAAGATTCTCCGTGACTACGACACATTTCCCTGTAG  
 CTGAAGATATCAGCTTGTCTGCAGCAAGTTCATCAGCCTTGGATGAGACCCGGACTGCCTACATCCTCCA  
 GGCTGTGGAAAGTGCCTGGGAAGGGGTTGACAGACAGAAAATCAAGGACATTAAGACCCACCAAGGGCC  
 AAGGGTCTAATAATGAAGTACAGTGACAGCAGAGCCGGTCAAGTGAAGTCCAGCTGGAGAACT  
 TAGAAGAGGATGAGGAGTGCATGGGTGCAGCAGCTGCGCTGGGCCTGCCGTGAGTGGTGTGGAAGTGA  
 CTCACTCATCTCCAAGTGAAGGACCTGCTGCCAGACCTCGGCGAGGGCTTTATTCTGGCCTGCCTGGAG  
 CACTACAGCTATGACTCAGAGCAGGTGATCAACAACATCCTGGAGGATCGGCTGGCCCTGAGCTCAGTC  
 AGCTGGACCGAGGCTAGAAAGACAAGTGAAGCCGGACCTACACCCCTGTTGTCATCTCGTCACAACAT  
 CTTCCAGAACGATGAGTTTGTGTTTCCAGCAGGACTCGGTGGACCTGAGCCGAGTGCACAAGGGCAGG  
 AGGAAGGAGGAGAACGTGAGGAGCCTGGTGAATGACAAGCAGGCTGTGGTGGCACAGTGGCAGCGTACC  
 AGAAGTACAGCGTGGTGGTAGAGGAGGTCCTCCCTGCAGCCAGGAGAATACCAGGCTGATGACTATGAGGA  
 CGAGTATGACGACACATACGATGGCAACCAGGTGGGCGCCAACGATGCAGACTCTGATGACGAGCTCATC  
 AGCCCGAGGCCCTTACCATCCCTCAGGTGCTGAGAACCAAAATGCCTGGCGAAGTGCAGGAGGAGGAGT  
 GGGATGAAGAGGATGAGGTGGAAGAGGAGGCCCAAGCCAGACCATTTTCATCCAGGATCCTGCAGTGT  
 GAGGAAAAGGCTGAAGCCAGGCGCATGGCCTTCTCGCCAGGAAGGGTATCGGCTGAGAACTCCACG  
 GCAGTAACAGGCGGCCCGGGCCATGGGCAAGCCGGGAAACAACCCAGGAACGCAGGAAGAAAGAAAG  
 CCAACAAGGCAGCCAGAGCCAACCACAACCGTAGAACCATGGCTGACCGAAAAAGAAAGCAAGGCATGAT  
 TCCATCC

**ACGCGT**ACGCGGCCGCTCGAGCAGAAACTCATCTCAGAAGAGGATCTGGCAGCAATGATATCCTGGATT  
 ACAAGGATGACGACGATAAGGTTTAA

**Protein Sequence:** >MR210450 representing NM\_029291  
Red=Cloning site Green=Tags(s)

```
MPALPLDQLQITHKDPKTGQPKTSAALNPEQKADRYFVLKPPPKDNIPALVEEYLERANFVANDLDWLL
ALPHDKFWCQVIFDETLQKCLDSYLHYVPRKFDEWVAPTPEVADMQNHLHRSVFLTFLRMSTHKESKDHF
ISPSAFGEILYNNFLFDIPKILDLCVLFKGNSPLLQKMGIGNIFTQQPSYYTDLDETIPTILQVFSNIIQ
HCGLQGDGTSTTPQKLGERSPLTPSDMPLELKDIVLYLCDTSTTLWAFLDIFPLACQTFQKHDFCYRLA
SFYEMAIPELESAIKRRELEDSKLLGDMWQRLSHSKKLMVVFHIIILNQICLLPILESSCDNIQGFIEEF
LQIFSSLLQEKRFLRDYDTFSPVAEDISLLQQASSALDETRTAYILQAVESAWEGVDRQKIKDIKDPBRA
KGSNNEVTVAEPVSEMPSQLLENLEDEECMGAALGPAVSGVELDSLISQVKDLLPDLGEGFILACLE
HYSYDSEQVINNILEDRLAPELSQLDRGLERQVKPDPTLLSSRHNFQNDFFDVF SRSDVLSRVHKGR
RKEENVRLVNDKQAVVAQWQRYQKYSVVVEEVLQPGEYQADDYEYDDTYDGNQV GANDADSDDELI
SRRPFTIPQVLR TKMPGEVQEEEWDEEVEEVEEAPKPDHF IQDPAVLREKAEARRMAFLARKGYRPNST
AVTGGPRGHGQSRETTQERRKKEANKAARANHNRRTMADRKRKSGMIPS
```

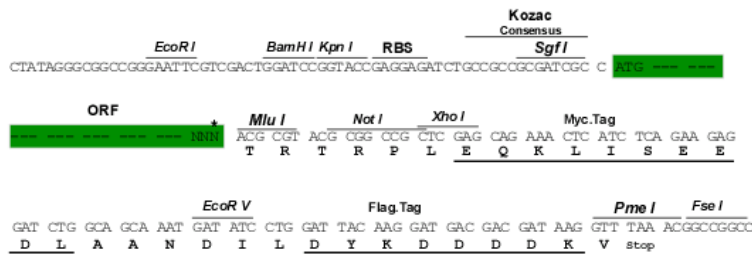
TRTRPLEQKLISEEDLAANDILDYKDDDDKV

**Chromatograms:** [https://cdn.origene.com/chromatograms/mm9096\\_f06.zip](https://cdn.origene.com/chromatograms/mm9096_f06.zip)

**Restriction Sites:** SgfI-MluI

**Cloning Scheme:**

Cloning sites used for ORF Shuttling:



\* The last codon before the Stop codon of the ORF

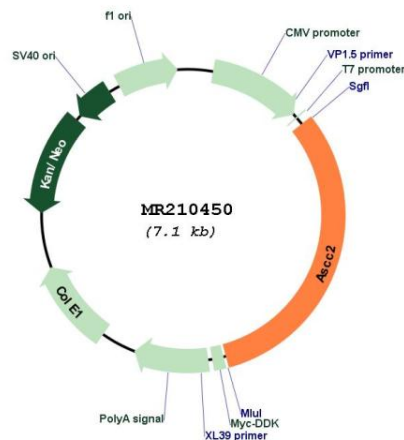
**ACCN:** NM\_029291

**ORF Size:** 2247 bp

**OTI Disclaimer:** The molecular sequence of this clone aligns with the gene accession number as a point of reference only. However, individual transcript sequences of the same gene can differ through naturally occurring variations (e.g. polymorphisms), each with its own valid existence. This clone is substantially in agreement with the reference, but a complete review of all prevailing variants is recommended prior to use. [More info](#)

**OTI Annotation:** This clone was engineered to express the complete ORF with an expression tag. Expression varies depending on the nature of the gene.

<b>Components:</b>	The ORF clone is ion-exchange column purified and shipped in a 2D barcoded Matrix tube containing 10ug of transfection-ready, dried plasmid DNA (reconstitute with 100 ul of water).
<b>Reconstitution Method:</b>	<ol style="list-style-type: none"> <li>1. Centrifuge at 5,000xg for 5min.</li> <li>2. Carefully open the tube and add 100ul of sterile water to dissolve the DNA.</li> <li>3. Close the tube and incubate for 10 minutes at room temperature.</li> <li>4. Briefly vortex the tube and then do a quick spin (less than 5000xg) to concentrate the liquid at the bottom.</li> <li>5. Store the suspended plasmid at -20°C. The DNA is stable for at least one year from date of shipping when stored at -20°C.</li> </ol>
<b>RefSeq:</b>	<u><a href="#">NM_029291.2</a></u>
<b>RefSeq Size:</b>	2623 bp
<b>RefSeq ORF:</b>	2250 bp
<b>Locus ID:</b>	75452
<b>UniProt ID:</b>	<u><a href="#">Q91WR3</a></u>
<b>Cytogenetics:</b>	11 A1
<b>MW:</b>	85.7 kDa
<b>Gene Summary:</b>	Plays a role in DNA damage repair as component of the ASCC complex. Recruits ASCC3 and ALKBH3 to sites of DNA damage by binding to polyubiquitinated proteins that have 'Lys-63'-linked polyubiquitin chains. Part of the ASC-1 complex that enhances NF-kappa-B, SRF and AP1 transactivation.[UniProtKB/Swiss-Prot Function]

**Product images:**


Circular map for MR210450