

Product datasheet for **MR210448**

Qsox1 (NM_001024945) Mouse Tagged ORF Clone

Product data:

Product Type:	Expression Plasmids
Product Name:	Qsox1 (NM_001024945) Mouse Tagged ORF Clone
Tag:	Myc-DDK
Symbol:	Qsox1
Synonyms:	1300003H02Rik; Qscn6; QSOX; SOx
Mammalian Cell Selection:	Neomycin
Vector:	pCMV6-Entry (PS100001)
E. coli Selection:	Kanamycin (25 ug/mL)



[View online »](#)

ORF Nucleotide Sequence:

>MR210448 representing NM_001024945
 Red=Cloning site Blue=ORF Green=Tags(s)

TTTTGTAATACGACTCACTATAGGGCGGCCGGGAATTCGTCGACTGGATCCGGTACCGAGGAGATCTGCC
 GCC**CGCATCGCC**

ATGAGGAGGTGCGGCCGCTCTCGGGCCGCCATCGCTGCTGCTACTACTGCTGCTGCTCTCGCCTCTGC
 TCTTCTCGGGGCCCGCGCTTACGCGGCCCGGCTCTCAGTGCTCTACTCGTCTCTGACCCGCTGACGCT
 GCTGGATGCTGATTTCGGTGCGTCCCACTGTGCTCGGCTCCAGCAGCGCCTGGGCGGTGGAGTTCTTCGCC
 TCCTGGTGTGGCCACTGCATCGCCTTCGCCCGACGTGGAAGGAGCTTGTAACGACGTGAAAGACTGGA
 GGCCAGCACTCAATCTTGTGTCTGACTGTGCTGAGGAGACCAACAGTGCTGTCTGCAGAGAGTTCAA
 CATCGCTGGCTTCCGACTGTGAGGTTTTTTCAGGCCTTACCAAGAACGGTTCTGGAGCGACACTGCCA
 GGTGCTGGCGCTAATGTGCAGACTCTGCGTATGAGGCTCATCGATGCTCTGGAGTCCCACCGTGACACAT
 GGCCCCAGCCTGTCCACCTCTGGAACCTGCCAAGCTGAATGATATCGACGGATTCTTTACAAGAAATAA
 AGCAGATTACCTGGCCCTGGTCTTTGAAAGGGAAGACTCTACCTGGGTAGAGAGGTAACCTGGACCTG
 TCCAGTACCATGCTGTGGCAGTGCGCAGGGTCTTGAATACAGAGAGTGACCTGGTGAACAAGTTTGGCG
 TCACTGACTTCCCATCTTGTACCTGCTGCTTCGGAATGGCTCTGTCTCCCGAGTGCCTGTGCTGGTGGG
 GTCCAGGCTTTTCTATACATCCTATCTTCGGGGGCTACCTGGACTGACCAGGGATGCTCCCCAACCACA
 GCCACCCAGTCACTGCTGATAAGATAGCACCCACAGTGTGGAAGTTTGCAGACCGCTCCAAGATCTACA
 TGGCCGACCTGGAGTCCGCACTCCACTACATCTTGCCTGTAGAAGTGGGGAAGTTCTCAGTGCTGGAGGG
 ACAGCGCTGGTGGCCCTGAAAAAGTTTGTGGCAGTATTGGCCAAGTACTTCCCTGGGCAGCCTTTGGTC
 CAGAATTCTTGCAATCCATAAACGACTGGCTTCAAGCAGCAGAAGAAGAGGATCCCCACAGTTTCT
 TCAAAGCTGCTCTGGACAGCAGGAAGGAGGATGCTGTCTTACTGAGAAGGTGAAGTGGTCCGCTGCCA
 GGGCAGTGAGCCACACTTCCGGGGTTTTCCCTGCTCACTGTGGTCCCTTCCACTTCTGACGGTGCAG
 GCAAACCGATATAGTGAGGCCCCACACAGGAACAGCTGATGGCCAGGAGGTCCTCCAAGCCATGAGGA
 GCTATGTTCAAGTCTTCTTTGGCTGTCGTGACTGTGCGGACATTTTGGCAGATGGCTGCAGCGTCCAT
 GCACCAAGTGAGAAGTCCAGTAATGCGATTCTTTGGCTCTGGACTAGCCACAACAGGGTTAACGCTCGC
 CTCTCAGGTGCTCTGAGTGAGGACCCCACTTCCCAAGGTGAGTGGCTCCCCGTGAGCTGTGTTCTG
 CCTGCCATAATGAACTCAACGGACAGGTGCCTTTGTGGGACCTTGGTCCACCCTCAACTTTCTCAAGGC
 TCACTTCTCCCCAGCAAACATCGTCATAGACTCTTCTGCATCTAGACACACAGGCCGGAGAGGGAGTCCA
 GAAGCTACCCCGAGCTGTAATGGATACATTAAGACTGGAGAGCAGAAATTCAGTGTTGGCCATGAGC
 AGGCTGCTTCTGCAGAGTCCCCTGGAGCCACTGCCCTAGATGTACCAGCTGAGAAGCCTGAAGCAAGTGG
 CCCCCAAGAACTATACACAGGCCTCAGAATGGGTGGAGCTTACCAGGGCAGGGCCCTCCTGAGCGCATG
 GAAGACCACCAGAGGGATATGCAGGAGAATGCCCCGGGCAGCAACACTTGAAGCAAGAGAGACTGAAG
 CCTATTTCTGCCTGAGGTGAACCACCTCCAAGGCCCTTAGAGCTCAGGCGAGGGGGCCGAGCCCCAA
 GCAACTAGCCCCATACTTGAAGAGGAACCAGAGGCCCTAGCTATACAGGGCCAAGGCCAGTGGCTGCAG
 GTTCTAGGAGGGGGCATTCCACCTGGACATTAGCCTCTGTGTGGGCTCTACTCCGTGCTCTCATGG
 GCTTACTGGCCATGTACACCTACTTTCGGGCCAGGCTGAGAACCCTCAAGGGCCATGCTAGTTACCCAC
 AGCC

ACGCGTACGCGGCCGCTCGAGCAGAACTCATCTCAGAAGAGGATCTGGCAGCAAATGATATCCTGGATT
 ACAAGGATGACGACGATAAGGTTTAA

Protein Sequence: >MR210448 representing NM_001024945
Red=Cloning site Green=Tags(s)

```
MRRCGRLSGPPSLLLLLLLLSPLLFSGPGAYAARLSVLYSSSDPLTLLDADSVRPTVLGSSSAWAVEFFA
SWCGHCIAFAPTWKELANDVKDWRPALNLAVLDCAEETNSAVCREFNIAGFPTVRRFFQAFKNGSGATLP
GAGANVQTLRMRLIDALESHRDTWPPACPPLEPAKLNIDGFFTRNKADYLALVFEREDSYLGREVTLDL
SQYHAVAVRRVLNTESDLVNKFGVTDFFPCYLLLRNGSVSRVPVLVESRSFYTSYLRLPGLTRDAPPTT
ATPVTADKIAPTVWKFADRSKIYMADLESALHYILRVEVGKFSVLEGRQLVALKKFVAVLAKYFPGQPLV
QNFLHSINDWLKQKQKRIPYSFFKAALDSRKEDAVLTEKVNWVGCQGSEPHFRGFP CSLWVLFHFLT VQ
ANRYSEAHPQEPADGQEV LQAMRSYVQFFF GCRDCADHFEQMAAASMHQVRSPSNAILWLWTSNHRVNAR
LSGALSEDPHFPKVQWPPRELCSACHNELNGQVPLWDLGATLNF LKAHFSPANIVIDSSASRHTGRRGSP
EATPELVMDTLKLESRLSVLGHEQAASAE SPGATALDVP AEKPEASGPQELYTGLRMGGASPGQPPERM
EDHQDMQENAPGQHL SKRDTEALFLPEVNH LQGPLELRGGRSPKQLAPILEEEPEALAIQGQGWLQ
VLGGGISHLDISLCVGLYSVSFMGLLAMTYFRARLRTPKGHASYPTA
```

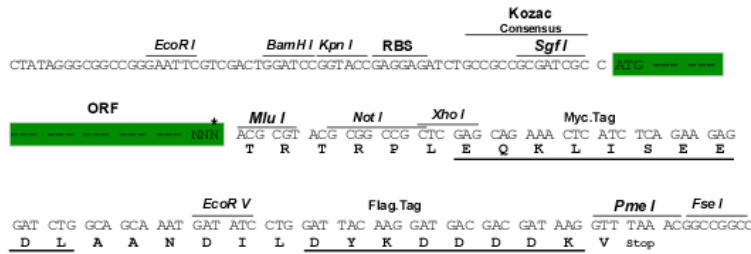
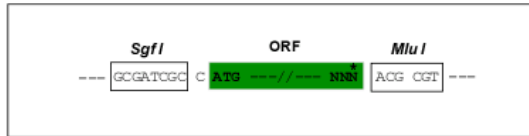
TRTRPLEQKLI SEEDLAANDILDYKDDDDKV

Chromatograms: https://cdn.origene.com/chromatograms/mm9013_d08.zip

Restriction Sites: SgfI-MluI

Cloning Scheme:

Cloning sites used for ORF Shuttling:



* The last codon before the Stop codon of the ORF

ACCN: NM_001024945

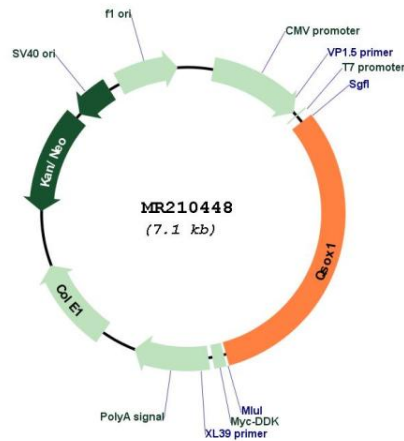
ORF Size: 2244 bp

OTI Disclaimer: The molecular sequence of this clone aligns with the gene accession number as a point of reference only. However, individual transcript sequences of the same gene can differ through naturally occurring variations (e.g. polymorphisms), each with its own valid existence. This clone is substantially in agreement with the reference, but a complete review of all prevailing variants is recommended prior to use. [More info](#)

OTI Annotation: This clone was engineered to express the complete ORF with an expression tag. Expression varies depending on the nature of the gene.

Components:	The ORF clone is ion-exchange column purified and shipped in a 2D barcoded Matrix tube containing 10ug of transfection-ready, dried plasmid DNA (reconstitute with 100 ul of water).
Reconstitution Method:	<ol style="list-style-type: none"> 1. Centrifuge at 5,000xg for 5min. 2. Carefully open the tube and add 100ul of sterile water to dissolve the DNA. 3. Close the tube and incubate for 10 minutes at room temperature. 4. Briefly vortex the tube and then do a quick spin (less than 5000xg) to concentrate the liquid at the bottom. 5. Store the suspended plasmid at -20°C. The DNA is stable for at least one year from date of shipping when stored at -20°C.
RefSeq:	<u>NM_001024945.1</u> , <u>NP_001020116.1</u>
RefSeq Size:	3399 bp
RefSeq ORF:	2247 bp
Locus ID:	104009
UniProt ID:	<u>Q8BND5</u>
Cytogenetics:	1 G3
MW:	83.2 kDa
Gene Summary:	Catalyzes the oxidation of sulfhydryl groups in peptide and protein thiols to disulfides with the reduction of oxygen to hydrogen peroxide (PubMed:26819240). Plays a role in disulfide bond formation in a variety of extracellular proteins (PubMed:26819240). In fibroblasts, required for normal incorporation of laminin into the extracellular matrix, and thereby for normal cell-cell adhesion and cell migration (PubMed:26819240).[UniProtKB/Swiss-Prot Function]

Product images:



Circular map for MR210448