

Product datasheet for **MR210442**

Phtf2 (NM_172992) Mouse Tagged ORF Clone

Product data:

| | |
|---------------------------|--|
| Product Type: | Expression Plasmids |
| Product Name: | Phtf2 (NM_172992) Mouse Tagged ORF Clone |
| Tag: | Myc-DDK |
| Symbol: | Phtf2 |
| Synonyms: | 1110054G21Rik; 9530062N20Rik; AI447096; C77923 |
| Mammalian Cell Selection: | Neomycin |
| Vector: | pCMV6-Entry (PS100001) |
| E. coli Selection: | Kanamycin (25 ug/mL) |



[View online »](#)

ORF Nucleotide Sequence:

>MR210442 representing NM_172992
 Red=Cloning site Blue=ORF Green=Tags(s)

TTTTGTAATACGACTCACTATAGGGCGGCCGGGAATTCGTGCGACTGGATCCGGTACCGAGGAGATCTGCC
 GCC**CGGATCGCC**

ATGGCGTCCAGAGTCACAGATGCTATAGTCTGGTATCAGAAGAAGATTGGAGCCTATGATCAACAAATAT
 GGGAAAAGTCTGTTGAACAAAGAGAAATCAAGGCCTTAAGGAATAAACCAAAGAAAACAGCACATGTGAA
 ACCAGACCTCATCGATGTTGATCTTGTGAGAGGGTCTGCATTTGCTAAGGCAAAGCCTGAAAAGTCTTTGG
 ACTTCTCTGACAAGGAAAGGGATTGTTGCGAGTTGCTTTTTCCCTTTCTTCTCCCGCTGGTGGTTACAAG
 TAACGTCCAGAGTCATCTTCTCCTGGCTTCTTGTCTCTATCTTCTCCAAGTTGTGCAATAGTATTATT
 CTGTTCCGCTCCTAGCCACATAGCATACTCTAACTGAAGTGATTGGGCCAATATGGCTGATGCTGCTT
 TTGGGAACCGTGCAATGCCAGATTGTTTCAACAAGAACACCCAAGCCTCCACTAGGCACAGGCGGTAAAC
 GAAGAAGGAAATTAAGAAAAGCAGCCCATTTGGAAGTCCACAGGGAAGGGGACGGTTCTAGCACCACAGA
 TAACACACAGGAGGGAGCGGTGCAGAGCCAGGCGCAGGCGCCCTTACAGTGTTGGCAGTGTCTTACA
 GACCTTTGGCTTGTCTTTCTTCTTATCAGGGTCAAAGAAGGCAAAGAATTCATTGATAAGTCAACCG
 AGACTGACAATGGCTATGTGTCCCTCGATGGGAAGAGGACTGTAAAAAGCAGTGAGGATGGAGCACAGTA
 CCATGAGCCTCAGTGTGAACTGTTGGACCAGAAGACGCAGCCTGGGCCACACGAACGCCAAGGAGTGT
 CCTGCCAAAGATACCAAAGAAAGATAACAATGTCTCTGATGAAGTATCCAGTGAGGAGGGTCCCGAAA
 CAGGATACCCATTGCGTGGTCAATGTGGACAGAACTTCTGAAAGCGGTCTTCGAAATAGAAAGCCACACCA
 TTATAAAAAGCATTATGCAAATGAGGATGCCCTAAATCGGGTACTAGTTGCAGCTCTCGCTGTTCAAGT
 TCCAGACAGGATTCTGAGAGCACAAGGCCAGAATCTGAAACCGAAGATGTATTATGGGAAGACTTGTAC
 ACTGTGCGGAATGCCGCTCATTTGTACCAGTGAGACAGATGTGGGAAACCCCTCAGATAAATCCATGTGG
 GAAGAAAAGAAATAGAGACGACCCCTTTTTCATCAGAGTCATTTGCCCTGGCTTCATAGTTCCACCCAGGA
 TTAGAAAAATCAGTGCTATAGTGTGGGAAGGTAACTGTAAGAAAAGCAGACATGTCTGTACTTGAAA
 TCAGTGGGATGATAATGAACAGAGTGAACAACCATGTCCCAGGCATAGGATACCAGGATTTTGAAATGC
 CATCTCTAATCCTGGGCTTGACCCCATTTGTTTTCCGACTGTCACAAGCAACAGACTTGGAGCAGCTC
 ACAGCCCATCTGCGTCAGAACTTATGTGATTGCGTTTGGCTTAACGAAGATGTCATGGTTCTTTCTA
 TGGTCTGATAAGTTTTGTGGTTCGAGTCTCTTGTGTGGATCTCTTTTTTTTGTGTGTGTAGCAGA
 AAGAACATATAAGCAACGATTACTTTTTGCAAACTCTTTGGACACTTGACGTCTGCAAGGAGAGCTCGC
 AAATCTGAGGTTCCGCATTTCCGGTTGAAGAAAGTACAGAATATAAAAATGTGGCTGTCTCTGCGTTCCT
 ATCTTAAGCGCCGAGGCCCTCAGCGATCTGTGGATGTCATTGTCTCATCGGCCTTCTTACTGACAACTC
 AGTTGTGTTTATCTGCTGTGCACAGCTGCTCCAGTGCACGAGATCTTCCTTGACTGTCACTATAACTGG
 GAGCTGGTGTCTGGTGCATCTCCTAACGCTGTTCTCCTGAGGTTTCGTTACTCTTGGATCAGAAACCA
 GCAAGAAATACAGCAATACCTCAATCCTACTTACGGAACAGATAAACCTCTACTTGAAAATGGAGAAGAA
 ACCTAACAAAAAGGAGGAGCTGACCCCTGTGAATAATGTGTTAAAGCTGGCTACGAAACTGCTGAAGGAA
 TTGGACAGTCCCTTTAGGTTGTATGGACTTACAATGAATCCGCTGCTGTAAACATCACCCAGGTTGTCA
 TCCTTTCCGCTGTTTCCGGTGTATCAGTGACTTGCTTGGATTAATTTAAAGCTGTGGAAGATCAATC
 G

**ACGCGTACGCGGCCGCTCGAGCAGAACTCATCTCAGAAGAGGATCTGGCAGCAAATGATATCCTGGATT
 ACAAGGATGACGACGATAAGGTTTAA**

Protein Sequence: >MR210442 representing NM_172992
 Red=Cloning site Green=Tags(s)

MASRVTD AIVVYQKKIGAYDQQIWEKSVEQREIKGLRNKPKKTAHVKPDLDVDLVRGSAFAKAKPESPW
 TSLTRKGI VRVFFPFFSRWWLQVTSRVIFSWLLVLYLLQVAI VLFCSAPSPHSIPLTEVIGPIWMLL
 LGTVHCQIVSTRTPKPLGTGGKRRRRLKAAHLEVHREGDGSSTTDNTQEGAVQSHGAGAPYSVGTVFR
 DLWLAFFLSGSKKAKNSIDKSTETDNGYVSLDGKRTVKSS EDGAQYHEPQCETVGPEDA AWATRTPRSV
 PAKDTQRKITNVSDEVS EEGPETGYPLRGHVDR TSEGLRNRKPHHYKKHYANEDAPKSGTSCSSRCSS
 SRQDSESTRPESETEDVLWEDLLHCAECRSSCTSETDVGNPQINPCGKKEYRDDPFHQSHLPWLHSSHPG
 LEKISAI VWEGNDCKKADMSVLEISGMIMNRVNNHVP GIGYQVFN AISLILGLTPFVFRLSQATDLEQL
 TAHSASELYVIAFGSNEDVMVLSMVLISFVVRVSLVWIFFLLCVAERTYQRLLF AKLFGHLTSARRAR
 KSEVPHFRLKKVQNIKMWLSLRSYLKRRGPQRSVDVIVSSAFLLTISVVFICCAQLLHVHEIFLDCHYNW
 ELVIWCISLTLFLLRFVTLGSETSKKYSNTSILLTEQINLYLKMEKKPNKKEELTLVNNVLKATKLLKE
 LDSPFRLYGLTMNPLLYNITQVIVLSAVSGVISDLLGFNLKLVKIKS

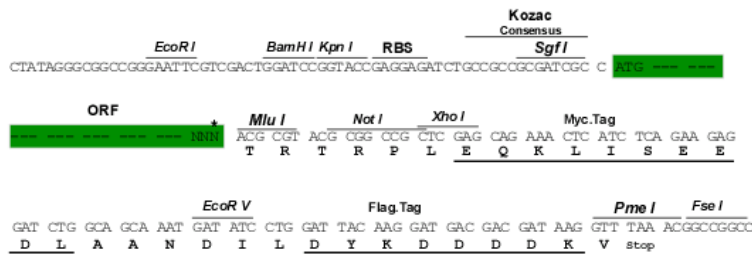
TRTRPLEQKLI SEEDLAANDILDYKDDDDKV

Chromatograms: https://cdn.origene.com/chromatograms/mm9013_d09.zip

Restriction Sites: SgfI-MluI

Cloning Scheme:

Cloning sites used for ORF Shuttling:



* The last codon before the Stop codon of the ORF

ACCN: NM_172992

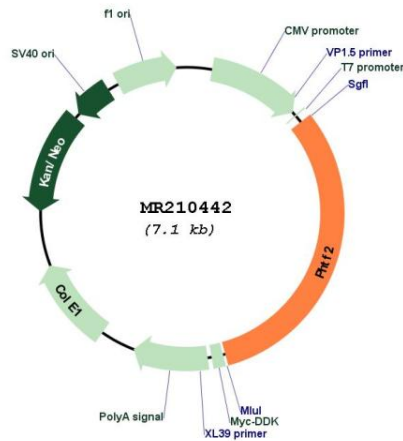
ORF Size: 2241 bp

OTI Disclaimer: The molecular sequence of this clone aligns with the gene accession number as a point of reference only. However, individual transcript sequences of the same gene can differ through naturally occurring variations (e.g. polymorphisms), each with its own valid existence. This clone is substantially in agreement with the reference, but a complete review of all prevailing variants is recommended prior to use. [More info](#)

OTI Annotation: This clone was engineered to express the complete ORF with an expression tag. Expression varies depending on the nature of the gene.

- Components:** The ORF clone is ion-exchange column purified and shipped in a 2D barcoded Matrix tube containing 10ug of transfection-ready, dried plasmid DNA (reconstitute with 100 ul of water).
- Reconstitution Method:**
1. Centrifuge at 5,000xg for 5min.
 2. Carefully open the tube and add 100ul of sterile water to dissolve the DNA.
 3. Close the tube and incubate for 10 minutes at room temperature.
 4. Briefly vortex the tube and then do a quick spin (less than 5000xg) to concentrate the liquid at the bottom.
 5. Store the suspended plasmid at -20°C. The DNA is stable for at least one year from date of shipping when stored at -20°C.
- RefSeq:** [NM_172992.3](#), [NP_766580.3](#)
- RefSeq Size:** 4839 bp
- RefSeq ORF:** 2244 bp
- Locus ID:** 68770
- UniProt ID:** [Q8CB19](#)
- Cytogenetics:** 5 A3
- MW:** 84.6 kDa
- Gene Summary:** May play a role in transcription regulation.[UniProtKB/Swiss-Prot Function]

Product images:



Circular map for MR210442