

Product datasheet for **MR210428**

Jup (NM_010593) Mouse Tagged ORF Clone

Product data:

Product Type:	Expression Plasmids
Product Name:	Jup (NM_010593) Mouse Tagged ORF Clone
Tag:	Myc-DDK
Symbol:	Jup
Synonyms:	Ctnng; D930025P04Rik; PG
Mammalian Cell Selection:	Neomycin
Vector:	pCMV6-Entry (PS100001)
E. coli Selection:	Kanamycin (25 ug/mL)



[View online »](#)

ORF Nucleotide
Sequence:

>MR210428 ORF sequence
 Red=Cloning site Blue=ORF Green=Tags(s)

TTTTGTAATACGACTCACTATAGGGCGGCCGGAATTCGTCGACTGGATCCGGTACCGAGGAGATCTGCC
 GCCGCGATCGCC

ATGGAGGTGATGAACCTTATTGAGCAGCCCATCAAGGTGACAGAGTGCCAACAGACATACACCTACGACT
 CGGGCATCCACTCCGGCGTCAATACCTGTGTGCCCTCTGTAAGCAGCAAGGGCATCATGGATGAGGATGA
 TGCTTGCCTGCGGCAGACAGTACACACTCAAGAAGACTACCACCTATACACAAGGGGTGCCACAGAACCAAGGT
 GACCTGGAATACCAGATGTCCACAACGGCCAGAGCCAAGCGGGTGCAGGAGGCCATGTGTCCAGGGGTCT
 CAGGCGAGGACAGTTCTCTACTGCTGGCCACCCAGGTGGAGGGGCAGACAACCAATCTGCAGCGCTGGC
 CGAACCATCCCAGTTGCTCAAGTCGGCCATCGTCCATCTCATCACTACCAGGATGATGCAGAGCTGGCC
 ACCCGGGTCTGCCTGAGCTCACCAAGCTGCTCAACGATGAGGACCCGGTAGTGGTGACCAAGGCGGCTA
 TGATCGTGAACCAGCTGTCCAAGAAGGAGGCATCCCGCCGGGCTCTAATGGGCTCGCCCCAGCTGGTGGC
 GCGGGTGGTGCAGACTATGCAGAACACCAGTGACCTGGATACTGCCCGGTGTACCACCAGCATCCTGCAC
 AACCTCTCTACCACCGAGAGGGCTTGCTCGCCATATTCAAGTCTGGAGGCATCCCTGCCCTAGTCCGAA
 TGCTCAGTTCCCCGTAGAATCTGTCTGTTCTACGCCATCACCACACTGCACAACCTGCTGCTCTATCA
 GGAGGGCGCCAAGATGGCGGTGCGTCTGGCAGACGGGCTGCAGAAGATGGTGCCCTACTCAACAAGAAC
 AACCTAAGTTCTCGCCATCACTACTGACTGCCTGCAGCTCCTGGCCTATGGCAACCAGGAGAGCAAGC
 TGATCATCCTGGCCAATGGGGGACCCCAAGGGCTTGTGCAGATCATGAGGAACACAGCTACGAGAAGCT
 TCTGTGGACCACCAGCCGTGTGCTCAAGGTGCTCTCCGTGTGCTTAGCAACAAGCCCGCCATCGTGGAG
 GCTGGTGGGATGCAGGCTCTGGGCAAGCACTTGACAAGCAACAGTCCCGCCTGGTGCAGAACTGCCTGT
 GGACTCGCGCAATCTCTCGGATGTAGCCACCAAGCAGGAGGGCCTGGAGAGTGTGCTGAAGATCCTGGT
 CAACCAACTGAGTGTAGATGACGTCAACGTCTCACCTGTGCCACGGGCACCCTCTCCAACCTGACCTGC
 AACCAACAGCAAAAACAAGACGCTGGTGACACAGAACAGTGGCGTGGAGGGCTCATCCACGCCATCCTGA
 GAGCCGGAGACAAAGATGACATCACAGAGCCCGTGTCTGTGCCCTGCGCCACCTTACCAGCCGTACCC
 CGAGGCTGAGATGGCCCAGAACTCTGTGCGCCTCAACTATGGAATCCCGGCCATTGTGAAACTGCTCAAC
 CAGCCAAACCAGTGGCCACTGGTCAAGGCAACTATTGGCCTGATCCGGAACCTGGCTCTGTGCCAGCCA
 ACCATGCCCTCTGCAGGAGGCCGCGTCAATCCCGCCTCGTCCAGCTGTTGGTCAAGGCCACCAGGA
 CGCCAGCGCCATGTGGCTGCAGGCACCCAGCAGCCCTACACGGATGGTGTGAGGATGGAGGAGATCGTG
 GAAGGCTGCACCGGAGCCCTGCACATCCTCGCCGGGATCCCATGAACCGCATGGAGATCTCCGGCTCA
 ACACCATTCCCCTGTTTGTCCAGCTCCTGTACTCCTCTGTGGAGAACATCCAGCGTGTGGCTGCGGGAGT
 GCTCTGCGAGCTGGCCCAGGACAAGGAGGCTGCCGACGCCATTGATGCGGAGGGCGCCTCTGCCCTCTC
 ATGGAGCTACTCCATTCCCGCAATGAGGGCACCAGCAGCTACGCTGCTGTGCTGTTCCGCATCTCTG
 AGGACAAGAACCAGATTACCGTAAGCGAGTGTCTGTGGAGCTACCAATTCCCTCTTCAAGCATGACCC
 AGCTGCCTGGGAGGCTGCCAGAGTATGATCCCGATCAACGAACCCTATGCAGACGACATGGATGCCACC
 TACCGCCCATGTACTCCAGCGATGTGCCTCTGGACCCTCTGGACATGCACATGGACCTGGATGGAGACT
 ACCCATGGACACCTACAGTGACGGCCTGAGGCCTCCCTACCCCACTGCAGACCACATGCTGGCC

ACGCGTACGCGGCCGCTCGAGCAGAACTCATCTCAGAAGAGGATCTGGCAGCAAATGATATCCTGGATT
 ACAAGGATGACGACGATAAGGTTTAA

Protein Sequence: >MR210428 protein sequence
 Red=Cloning site Green=Tags(s)

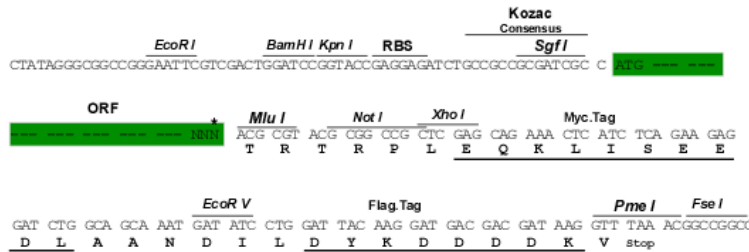
MEVMNLIEQPIKVTWQQTYTYDSGIHSGVNTCVPSVSSKGMDEDDACGRQYTLKKTTTYTQGVQPQNQG
 DLEYQMSTTARAKRVREAMCPGVSGEDSSLLLATQVEGQTTNLQRLAEPSSLKSAIVHLINYQDDAELA
 TRALPELTKLLNDEDPVVVTKAAMIVNQLSKKEASRRALMGSPQLVAAVVRTMQNTSDLTARCTTSILH
 NLSHHREGLLAIFKSGGIPALVRMLSSPVESVLFYAITTLHNLLLYQEGAKMAVRLADGLQKMVPLLKNK
 NPKFLAITDCLQLLAYGNQESKLIILANGGPQGLVQIMRNYSYEKLLWTTSRVLKVLVSVCPSPKPAIVE
 AGGMQALGKHLTSNSPRLVQNCLWTLRNLSDVATKQEGLESVLKILVNQLSVDDVNVLTCAATGTLNLT
 NNSKNKTLVTQNSGVEALIHAILRAGDKDDITEPAVCALRHLTSRHEAEMAQNSVRLNYGIPAIVKLLN
 QPNQWPLVKATIGLIRNLALCPANHAPLQEAIVPRVQLLVKAHQDAQRHVAAGTQQPYDGVMEEIV
 EGCTGALHILARDPMMRMEIFRLNTIPLFVQLLYSSVENIQRVAAGVLCELAQDKEAADAIDAEGASAPL
 MELLHSRNEGTATYAAAVLFRISEDKNPDYRKRVSVELTNSLFKHDPAAWEAAQSMIPINEPYADDMAT
 YRPMYSSDVLPLDPLDMHMDLDGDYPMDTYSDGLRPPYPTADHMLA

TRTRPLEQKLISEEDLAANDILDYKDDDDKV

Restriction Sites: SgfI-MluI

Cloning Scheme:

Cloning sites used for ORF Shuttling:



* The last codon before the Stop codon of the ORF

ACCN: NM_010593

ORF Size: 2238 bp

OTI Disclaimer: The molecular sequence of this clone aligns with the gene accession number as a point of reference only. However, individual transcript sequences of the same gene can differ through naturally occurring variations (e.g. polymorphisms), each with its own valid existence. This clone is substantially in agreement with the reference, but a complete review of all prevailing variants is recommended prior to use. [More info](#)

OTI Annotation: This clone was engineered to express the complete ORF with an expression tag. Expression varies depending on the nature of the gene.

Components: The ORF clone is ion-exchange column purified and shipped in a 2D barcoded Matrix tube containing 10ug of transfection-ready, dried plasmid DNA (reconstitute with 100 ul of water).

Reconstitution Method:

1. Centrifuge at 5,000xg for 5min.
2. Carefully open the tube and add 100ul of sterile water to dissolve the DNA.
3. Close the tube and incubate for 10 minutes at room temperature.
4. Briefly vortex the tube and then do a quick spin (less than 5000xg) to concentrate the liquid at the bottom.
5. Store the suspended plasmid at -20°C. The DNA is stable for at least one year from date of shipping when stored at -20°C.

RefSeq: [NM_010593.2](#), [NP_034723.1](#)

RefSeq Size: 5009 bp

RefSeq ORF: 2238 bp

Locus ID: 16480

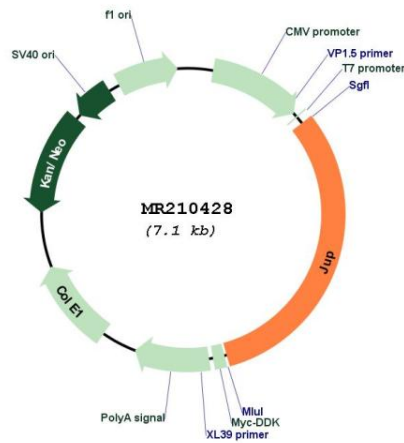
UniProt ID: [Q02257](#)

Cytogenetics: 11 63.47 cM

MW: 81.8 kDa

Gene Summary: Common junctional plaque protein. The membrane-associated plaques are architectural elements in an important strategic position to influence the arrangement and function of both the cytoskeleton and the cells within the tissue. The presence of plakoglobin in both the desmosomes and in the intermediate junctions suggests that it plays a central role in the structure and function of submembranous plaques. Acts as a substrate for VE-PTP and is required by it to stimulate VE-cadherin function in endothelial cells. Can replace beta-catenin in E-cadherin/catenin adhesion complexes which are proposed to couple cadherins to the actin cytoskeleton.[UniProtKB/Swiss-Prot Function]

Product images:



Circular map for MR210428