

## Product datasheet for **MR210426**

### Med25 (NM\_029365) Mouse Tagged ORF Clone

#### Product data:

Product Type:	Expression Plasmids
Product Name:	Med25 (NM_029365) Mouse Tagged ORF Clone
Tag:	Myc-DDK
Symbol:	Med25
Synonyms:	2610034E13Rik; 2610529E18Rik; ESTM2
Mammalian Cell Selection:	Neomycin
Vector:	pCMV6-Entry (PS100001)
E. coli Selection:	Kanamycin (25 ug/mL)



[View online »](#)



**Protein Sequence:** >MR210426 protein sequence  
Red=Cloning site Green=Tags(s)

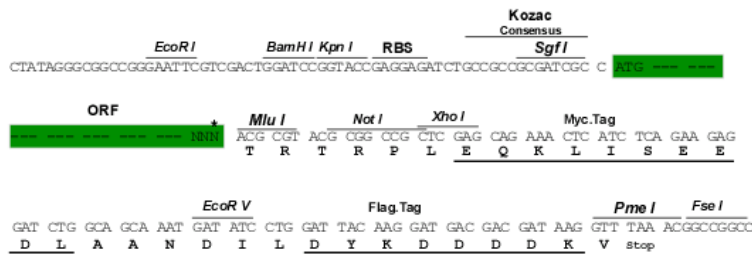
```
MVPGSEGPARGGLVADVVFVIEGTANLGPYFEELRKHYLLPAIEYFNGGPPAETDFGGDYGGTQYSLV
FNTVDCAPESYVQCHAPTSSAYEFVTWLDGIKFMGGGGESCSLIAEGLSTALQLFDDFKKMREQIGQTHR
VCLLLICNSPPYLLPAVESTTYSGCTTESLVQKIGERGIHF SIVSPRKL PALRLLFEKAAPPALLEPLQQP
ADVSQDPRHMLV RGLVLPVGGSS TSGSLQTKQAVPLPPAPASAATLSAAPPQALPPVPPQYQVPGNLSA
AQVAAQNAVEAAK SQKAGLGRFSPINPLQQAAPGVGPPFSQAPAPPLAPVPPGAPKPPASQPSLVSTV
APGPVLAAPAQPGAPSLAGTVTPGGVNGPSAAQLGGPALGGQSVSNKLLAWSGVLEWQEKPKPASVDAN
TKLTRSLPCQVYVNHGENLKTEQWPQKLIMQLIPQQLLTTLGPLFRNSRMVQFHF TNKDLES LKGLYRIM
GNGFAGCVHFPHTAPCEVRVLM LLYSSKKKIFMGLIPYDQSGFVNGIRQVITNHKQVQQKLEQQRGMGA
QQAPPVLGP ILEE QARPPQNL LQLRAPQPQPGAVGASAA TGQPQPGATQAPT GAPQGGPAAAGPPPS
GPILRPQNP GANPQLR SLLLNPAPPQTGVPPPQASLHHLQPPGAP TLLPPHQSMGQPQLGPQLLHPPPAQ
SWPTQLPQRAPLP GQMLLSGGPRGPVQPQLQPSVMEDDILMDLI
```

TRTRPLEQKLISEEDLAANDILDYKDDDDKV

**Restriction Sites:** SgfI-MluI

**Cloning Scheme:**

Cloning sites used for ORF Shuttling:



\* The last codon before the Stop codon of the ORF

**ACCN:** NM\_029365

**ORF Size:** 2238 bp

**OTI Disclaimer:** The molecular sequence of this clone aligns with the gene accession number as a point of reference only. However, individual transcript sequences of the same gene can differ through naturally occurring variations (e.g. polymorphisms), each with its own valid existence. This clone is substantially in agreement with the reference, but a complete review of all prevailing variants is recommended prior to use. [More info](#)

**OTI Annotation:** This clone was engineered to express the complete ORF with an expression tag. Expression varies depending on the nature of the gene.

**Components:** The ORF clone is ion-exchange column purified and shipped in a 2D barcoded Matrix tube containing 10ug of transfection-ready, dried plasmid DNA (reconstitute with 100 ul of water).

**Reconstitution Method:**

1. Centrifuge at 5,000xg for 5min.
2. Carefully open the tube and add 100ul of sterile water to dissolve the DNA.
3. Close the tube and incubate for 10 minutes at room temperature.
4. Briefly vortex the tube and then do a quick spin (less than 5000xg) to concentrate the liquid at the bottom.
5. Store the suspended plasmid at -20°C. The DNA is stable for at least one year from date of shipping when stored at -20°C.

**RefSeq:** [NM\\_029365.3](#)

**RefSeq Size:** 2291 bp

**RefSeq ORF:** 2238 bp

**Locus ID:** 75613

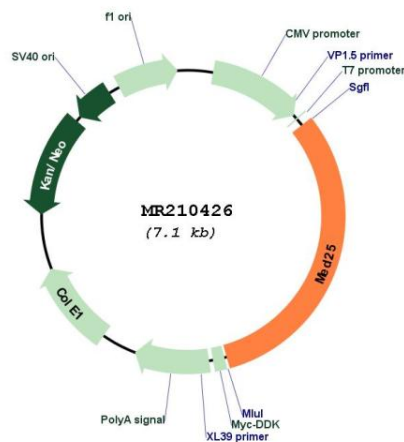
**UniProt ID:** [Q8VCB2](#)

**Cytogenetics:** 7 28.95 cM

**MW:** 78.1 kDa

**Gene Summary:** Component of the Mediator complex, a coactivator involved in the regulated transcription of nearly all RNA polymerase II-dependent genes. Mediator functions as a bridge to convey information from gene-specific regulatory proteins to the basal RNA polymerase II transcription machinery. Mediator is recruited to promoters by direct interactions with regulatory proteins and serves as a scaffold for the assembly of a functional preinitiation complex with RNA polymerase II and the general transcription factors. Required for RARA/RXRA-mediated transcription (By similarity).[UniProtKB/Swiss-Prot Function]

### Product images:



Circular map for MR210426