

## Product datasheet for **MR210394**

### **Acap1 (NM\_153788) Mouse Tagged ORF Clone**

#### **Product data:**

Product Type:	Expression Plasmids
Product Name:	Acap1 (NM_153788) Mouse Tagged ORF Clone
Tag:	Myc-DDK
Symbol:	Acap1
Synonyms:	Centb1
Mammalian Cell Selection:	Neomycin
Vector:	pCMV6-Entry (PS100001)
E. coli Selection:	Kanamycin (25 ug/mL)



[View online »](#)

**ORF Nucleotide Sequence:**

>MR210394 ORF sequence  
 Red=Cloning site Blue=ORF Green=Tags(s)

TTTTGTAATACGACTCACTATAGGGCGGCCGGGAATTCGTCGACTGGATCCGGTACCGAGGAGATCTGCC  
 GCC**CGGATCGCC**

ATGACGGTCAAGCTAGATTTTGAAGAATGTCTCAAGGACTCACCCCGCTCCGAGCCTCGATTGAACTGG  
 TGGAAACTGAAGTGTGAGAATTGGAGACCCGCCTGGAAAAGCTGCTAAAGCTGGGTTCTGCCTCCTGGA  
 GAGCGGACAGCATTACCTTGCTGCCGGTCTGCCTTCGTTGTTGGCATCTGTGACCTGGCTCGCCTGGGT  
 CCACCAGAGCCCATGATGGCGGAGTGTCTGAAAAAATCACCGTGAGTCTGAACCACAACTGGACAGCC  
 ATGCTGAGCTTCTGATGCTACTCAACATACTGCAGCAGCAAATCCAGACTCTGGTCAAGGAAGTCT  
 CCGGGGCTCCGAGAGGCTCGCAGGGATTTCTGGCGAGGGGCTGAGAACCTGGAGGCTGCTTTACCCAC  
 AATGCAGAGGTCCCAGGCGCGTGTCCAAGAAGCAGAGGAGGCTGGAAGTCTTTGAGGACCGCTCGAG  
 CTGGGTACCGGAGTCGGCATTAGATTATGCCCTGCAGGTCAATGTGATTGAGGATAAGAGGAAGTTCGA  
 CATCATGGAATTCGACTGCGCTTGGTTGAGGCCAGGCCACTATTTCCAGCAGGGCCATGAAGAGCTA  
 AACAGGCTGGCTCAGTATCGGAAGGAATTGGGTACCCAGTTGCACAACCTGGTCTTGAAGTCAAGTCTGAC  
 AGAAGAGAGACATGGAACAGAGGCATGTGTTACTGAAGCAGAAGGAGCTGGTGGCGAGGAGCCAGAGCC  
 AAGCCTAAAGGAGGGGCTAGTGGCTTGGTAATGGAAGGACATCTTTTCAAACGTGCCAGCAATGCATTT  
 AAGACCTGGAGCAGACGCTGGTTCACCATTCAGAAACACAGCTGGTTTACCAGAAGAAATATAAGGACC  
 CTGTAACCGTGGTGGTAGACGACCTTCGTCTGTACAGTGAAGCTCTGTCCAGACTCAGAAAGGCGTTT  
 CTGTTTCGAAGTAGTGTCCACCAGCAAGTCTGTTTCTCCAGGCTGACTCTGAGCGTCTCTGCAGCTG  
 TGGTCACTGCTGTCCAGAGCAGCATTGCCTCAGCCTCAGCCAGGCTCACCTGGAGAACAGCCCTCGGG  
 GGCCAGGCCAGGCTCAGGATACCATGCCCGGGCTCTGCTGCAACTCTGGCCTGTGGCGGGCAGCCAG  
 AGGAAGGGAGTCTGGAGGAGTTGGTCAGGTAGCGGCCAGGTACAAAGCTGGATGGAAATGCGCAATGC  
 TGCAGTGCAGGGAGCCAGCCCCAGAGTGGCCAGCATCAACCTTGGCGTCACTCTCTGCATTAGTGT  
 CTGGCATCCACAGGAGCCTCGGAGTTCATTTCTCAAAGTCCGCTCTCTGACCCTTGACTCCTGGGAACC  
 AGAACTGGTGAAGCTTATGTGCGAGCTGGGGAATGTCATCATCAACCAGATCTATGAGGCCCGGGTGGAG  
 GCCATGGCGGTGAAGAAGCCAGGGCCAGCTGCTCCCGCAGGAAAAGGAAGCCTGGATTATGCCAAGT  
 ATGTGGAGAAAAAGTTCCTGACCAAACCTCCTGAAATCCGTGGGCGAAGAGGTGGCAGGGGACCCCAAG  
 AGGACATCCTCCTGTGCCCCAAAGCCTCCCATCAGGCCACACTCGGCATTGTCAGATCCAAATCAGAG  
 TGCCCGTCTGATGACATGGGAAGCTGCACCCCGGGCCCTGCTGTTTCAAGCTGCTGGACATCCCCAT  
 CTCTTCTACCATGGCTGATGCCCTGGCCATGGAGCTGATGTCAACTGGTCAATGTGGCCAGGGGAA  
 TGCCACACCTCTGATCCGGGCCACAGCTGCTAACTCTTCTGGCCTGCGAGTTTCTCTCCAAAATGGG  
 GCGAATGTGAACCAAGCAGACAGTGCAGGCCGGGCTCCTCTCCACCATGCCACCATCTTGGTCACACAG  
 GGCTCGCTTGCCTGTTCTGAAACGGGGTCTGATCTGGGGGCTCGAGACACAGAAGGCAGGGACCCCTCT  
 GACTATCGCAATGGAAACCACTAATGCTGACATCGTAACCCTGCTACGATTGGCAAAGATGAGGGAGGCT  
 GAAGCGGCCAGGGCCAGGCAGGAGACGAGACGTATCTCGACATATCCGAGACTTCTCCCTCATGGCGT  
 CGGACGACCCAGAGAACTGAGCCGTGCGAGTCACGACCTCCATACTCTG

**ACGCGT**ACGCGGCCGCTCGAGCAGAACTCATCTCAGAAGAGGATCTGGCAGCAAATGATATCCTGGATT  
 ACAAGGATGACGACGATAAGGTTTAA

**Protein Sequence:** >MR210394 protein sequence  
Red=Cloning site Green=Tags(s)

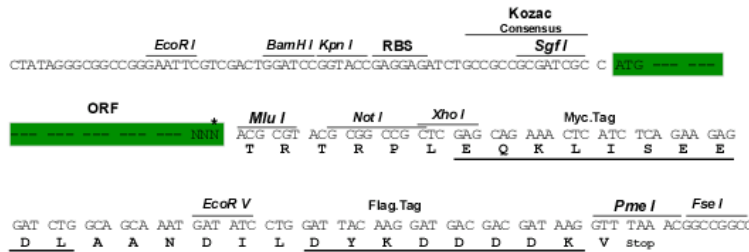
MTVKLDFEELKDSRFRASIELVETEVSLETRLEKLLKLGSCLLLESGQHLYLAAGRAVVGICDLARLG  
 PPEPMMAECLKFTVSLNHKLDSHAELLDATQHTLQQIQITLVKEGLRGFREARRDFWRGAENLEALTH  
 NAEVPRRRVQEAEEAGTALRTARAGYRSRALDYALQVNVIEDKRFDIMEFVLRRLVEAQATYFQQGHEEL  
 NRLAQYRKELGTQLHNLVLNSARQKRDMEQRHVLLKQKELGGEPEPSLKEGSPGLVMEGHLFKRASNAF  
 KTWSSRRWFTIQNNQLVYQKYYKDPVTVVVDDLRLCTVKLCPDSERRFCFEVVSTSKSCFLQADSERLLQL  
 WYSAVQSSIASAFSAHLENSPRGPGQVSGYHAPGSAATLACGGAARGRESGGVGVQVAAQVQSVQDGAQC  
 CDCREPAPEWASINLGVTLCIQCSGIHRS LGVHFSKVRSLTLDSEPELVKLMCELG NVIINQIYEARVE  
 AMAVKKPGPSCSRQEKEAWIHAKYVEKKFLTKLPEIRGRRGGRRGPPRHPPVPPKPPIRPHSGIVRSKSE  
 CPSDDMGSLHPGALLFQAAGHPPSLPTMADALAHGADVNWNVVGQGNATPLIRATAANSL LACEFLLQNG  
 ANVNQADSAGRGPLHHA TILGHTGLACLFLKRGADLGARDTEGRDPLTIAMETT NADIVTLLRLAKMREA  
 EAAQGGAGDETYLDIFRDFSLMASDDPEKLSRRSHDLHTL

TRTRPLEQKLISEEDLAANDILDYKDDDDKV

**Restriction Sites:** SgfI-MluI

**Cloning Scheme:**

Cloning sites used for ORF Shuttling:



\* The last codon before the Stop codon of the ORF

**ACCN:** NM\_153788

**ORF Size:** 2223 bp

**OTI Disclaimer:** The molecular sequence of this clone aligns with the gene accession number as a point of reference only. However, individual transcript sequences of the same gene can differ through naturally occurring variations (e.g. polymorphisms), each with its own valid existence. This clone is substantially in agreement with the reference, but a complete review of all prevailing variants is recommended prior to use. [More info](#)

**OTI Annotation:** This clone was engineered to express the complete ORF with an expression tag. Expression varies depending on the nature of the gene.

**Components:** The ORF clone is ion-exchange column purified and shipped in a 2D barcoded Matrix tube containing 10ug of transfection-ready, dried plasmid DNA (reconstitute with 100 ul of water).

- Reconstitution Method:**
1. Centrifuge at 5,000xg for 5min.
  2. Carefully open the tube and add 100ul of sterile water to dissolve the DNA.
  3. Close the tube and incubate for 10 minutes at room temperature.
  4. Briefly vortex the tube and then do a quick spin (less than 5000xg) to concentrate the liquid at the bottom.
  5. Store the suspended plasmid at -20°C. The DNA is stable for at least one year from date of shipping when stored at -20°C.

**RefSeq:** [NM\\_153788.2](#)

**RefSeq Size:** 2482 bp

**RefSeq ORF:** 2223 bp

**Locus ID:** 216859

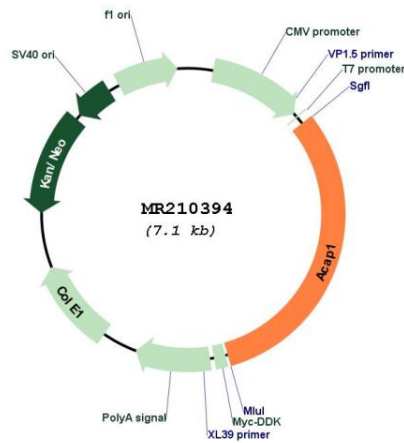
**UniProt ID:** [Q8K2H4](#)

**Cytogenetics:** 11 B3

**MW:** 81.7 kDa

**Gene Summary:** GTPase-activating protein (GAP) for ADP ribosylation factor 6 (ARF6) required for clathrin-dependent export of proteins from recycling endosomes to trans-Golgi network and cell surface. Required for regulated export of ITGB1 from recycling endosomes to the cell surface and ITGB1-dependent cell migration (By similarity).[UniProtKB/Swiss-Prot Function]

**Product images:**



Circular map for MR210394