

## Product datasheet for **MR210391**

### **Ercc2 (BC034517) Mouse Tagged ORF Clone**

#### **Product data:**

Product Type:	Expression Plasmids
Product Name:	Ercc2 (BC034517) Mouse Tagged ORF Clone
Tag:	Myc-DDK
Symbol:	Ercc2
Synonyms:	AA407812; AU020867; AW240756; CXPB; Ercc-2; Mhdarco15; RCO015; XPD
Mammalian Cell Selection:	Neomycin
Vector:	pCMV6-Entry (PS100001)
E. coli Selection:	Kanamycin (25 ug/mL)



[View online »](#)

**ORF Nucleotide  
Sequence:**

>MR210391 ORF sequence  
 Red=Cloning site Blue=ORF Green=Tags(s)

TTTTGTAATACGACTCACTATAGGGCGGCCGGAATTCGTCGACTGGATCCGGTACCGAGGAGATCTGCC  
 GCC**GCGATCGCC**

ATGAAGCTCAACGTGGACGGGCTGCTGGTCTACTTCCCCTACGACTACATCTACCCGGAGCAGTTCTCCT  
 ACATGCTGGAGCTCAAGCGCACGCTGGACGCCAAGGGTCATGGAGTCTGGAGATGCCCTCGGGCACTGG  
 GAAGACAGTGTCCCTATTGGCCCTGATTGTGGCCTATCAGCGGGTCATAGAAGAGCTTCGTAAGCTACTC  
 AGCTTCTACGAGCAGCAGGAGGGCGAGAAGCTGCCGTTCTTAGGACTGGCTCTGAGCTCAAGAAAGAACC  
 TGTGCATTATCCCGAGGTGACTCCACTGCGCTTTGGGAAGGATGTTGATGGGAAGTGTACAGCCTAAC  
 GGCGTCGATGTGCGGGCACAGTACCAGCAGGATGCCAGCCTGCCTCACTGCCGTTCTATGAGGAATTT  
 GACATCCATGGACGCCAGATGCCGCTCCCTGCGGGCATCTACAACCTGGATGACCTGAAGGCCCTAGGGC  
 ATGCCAGGGCTGGTCCCTACTTCTGGCTCGATACTCGATCCTGCATGCCAACGTGGTGGTTTACAG  
 CTACCACTACCTCTGGACCCCAAGATCGCAGACCTGGTATCCAAGAGCTGGCTCGCAAGGCTGTTGTG  
 GTCTTCGATGAAGCTCACAACTCGACAATGTCTGCATTGACTCCATGAGTGTCAACCTCACCCGAGGA  
 CTCTGGACCGTTGCCAGAGCAACTTAGACACCCTACAGAAGACCGTGTCTCAGGATCAAGGAGACGGATGA  
 GCAGCGGCTGCGGGATGAGTACCGGCGCCTGGTGGAGGGCCTGCGGGAGGCCAGTGTGGCCCGGAGACA  
 GATGCCACCTGGCCAACCCTGTGCTGCCGGACGAGGTGCTGCAGGAGGCTGTGCTGGCTCCATCCGTA  
 CGGCTGAGCACTTCTGGGCTTCTGCGGGCGGCTGCTGGAGTATGTCAAGTGGCGTCTGCGCGTGCAGCA  
 TGTGGTGCAGGAGTCCACCTGCCTTCTGAGCGGCTGGCCAGCGGGTGTGCATCCAGCGCAAGCCC  
 CTCAGGTTCTGTGCTGAACGCCCTGCGCTCCCTGCTGCACACCCTGGAGATTGCCGACCTGGCCGACTTCT  
 CCCCCTCACACTCCTTGCTAACTTCCCACTCTCGTCAGCACTACGCCAAGGGCTTACCATTATCAT  
 TGAGCCCTTTGACGACAGGACCCCAACCATCGCCAACCCGTTCTGCATTCAGCTGTATGGACGCCCTCC  
 TTGGCCATCAAGCCTGTGTTTGGAGCGTTCAGTCTGTATCATCACTTCTGGGACACTGTCCCACTGG  
 ACATCTACCCCAAGATCCTGGACTTCCACCCTGTCAAAATGGCAACCTTACCATGACGCTGGCCCGAGT  
 CTGCCTCTGCCGATGATCATTGGCCGTGGTAATGACCAGGTAGCAATCAGCTCCAAATTTGAGACCAGA  
 GAAGATATTGCTGTGATCCGAACTATGGCAACCTCCTGCTGGAGATGTCGCGCGTGGTCCCAGATGGCA  
 TTGTGGCCTTCTTACCAGCTACCAGTACATGAAAGCACCGTGGCCTCCTGGTATGAGCAGGGCATCCT  
 TGAGAATCCAGAGGAACAACTGCTTTCATTGAGACCCAGGATGGGGCTGAGACCAGTGTGGCCCTG  
 GAGAAGTACCAAGAGGCATGCGAGAATGGCCGTGGGGCCATTCTGCTCTCAGTGGCTCGGGGCAAGTAT  
 CAGAAGGGATTGACTTTGTACACCACTACGGACGGGCTGTGATCATGTTTGGAGTCCCTATGTCTATAC  
 CCAGAGCCGAATTCTCAAGGCCCGGCTAGAGTATCTGCGGGACCAGTTCAGATCCGAGAGAACGACTTC  
 CTCACCTTTGATGCTATGCGCCATGCAGCCAGTGTGTGGGTCGTGCCATCAGGGGCAAGACGGACTATG  
 GACTCATGGTCTTTGCTGACAAGCGTTTGTGCGGGGACAAGCGTGGTAAGCTGCCTCGCTGGATCCA  
 GGAGCACCTGACCGACTCCAACCTCAACCTGACCGTGGATGAGGGTGTACAGGTGCGCAAGTACTTCCTG  
 CGGCAGATGGCGCAGCCCTTCCACCGGGAGGATCAGCTGGGCTGTGCTGCTCAGCTGGAGCAGCTGC  
 AGTCAGAGGAGACACTACAGCGAATTGAGCAGATCGCACAGCAGCTC

**ACGCGT**ACGCGGCGGCTCGAGCAGAACTCATCTCAGAAGAGGATCTGGCAGCAAATGATATCCTGGATT  
 ACAAGGATGACGACGATAAGGTTTAA

**Protein Sequence:** >MR210391 protein sequence  
Red=Cloning site Green=Tags(s)

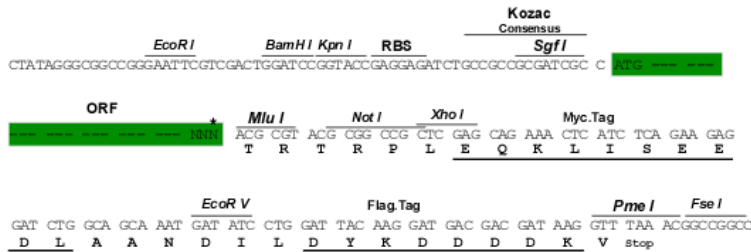
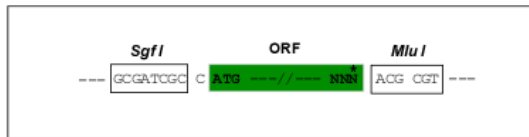
MKLNVDGLLVYFPYDIYPEQFSYMLELKRRLDAKGHVLEMPSTGKTVSLALIVAYQRVIEELRKL  
 SFYEQQEGEKL PFLGLALSSRNLCIHPEVTP LRF GKVDGKCHSLTASYVRAQYQDASLPHCRFYEEF  
 DIHGRQMPLPAGIYNLDDLKALGHRQGWCPYFLARYSILHANVVVSYHYLLDPKIADLVSKELARKAVV  
 VFDEAHNIDNVCIDSMSVNL TRRTLDRCSNLDLTLQKTVLRKETDEQRLRDEYRRLVEGLREASVARET  
 DAHLANPVL PDEVLQEAVPGSIRTAEHFLGFLRRLLEYVKWRLRVQHVQESPPAFLSGLAQRVCIQRKP  
 LRFCAERLRSLHLTEIADLADFSPLTLANFATLVSTYAKGFTIIIEPFDDRTPTIANPVLHFSMDAS  
 LAIKPVFERFQSVIITSGLTSPLDIYPKILDFHPVTMATFTMTLARVCLCPMIIGRGNDQVAISSKFETR  
 EDIAVIRNYGNLLEMSAVVPDGIVAFFTSYQYMESTVASWYEQGILENIQRNKLLFIETQDGAETSVAL  
 EKYQEACENGRGAILLSVARGKVSEGIDFVHHYGRAVIMFGVPYVYTQSRILKARLEYLRDQFQIRENDF  
 LTFDAMRHAACVGRAIRGKTDYGLMVFADKRFARADKRGKLPRIQEHLTDSNLNLTVDEGVQVAKYFL  
 RQMAQPFHREDQLGLSLLSLEQLQSEETLQRIEQIAAQL

TRTRPLEQKLISEEDLAANDILDYKDDDDKV

**Restriction Sites:** SgfI-MluI

**Cloning Scheme:**

Cloning sites used for ORF Shuttling:



\* The last codon before the Stop codon of the ORF

**ACCN:** BC034517

**ORF Size:** 2217 bp

**OTI Disclaimer:** The molecular sequence of this clone aligns with the gene accession number as a point of reference only. However, individual transcript sequences of the same gene can differ through naturally occurring variations (e.g. polymorphisms), each with its own valid existence. This clone is substantially in agreement with the reference, but a complete review of all prevailing variants is recommended prior to use. [More info](#)

**OTI Annotation:** This clone was engineered to express the complete ORF with an expression tag. Expression varies depending on the nature of the gene.

**Components:** The ORF clone is ion-exchange column purified and shipped in a 2D barcoded Matrix tube containing 10ug of transfection-ready, dried plasmid DNA (reconstitute with 100 ul of water).

**Reconstitution Method:**

1. Centrifuge at 5,000xg for 5min.
2. Carefully open the tube and add 100ul of sterile water to dissolve the DNA.
3. Close the tube and incubate for 10 minutes at room temperature.
4. Briefly vortex the tube and then do a quick spin (less than 5000xg) to concentrate the liquid at the bottom.
5. Store the suspended plasmid at -20°C. The DNA is stable for at least one year from date of shipping when stored at -20°C.

**RefSeq:** [BC034517](#), [AAH34517](#)

**RefSeq Size:** 3500 bp

**RefSeq ORF:** 2219 bp

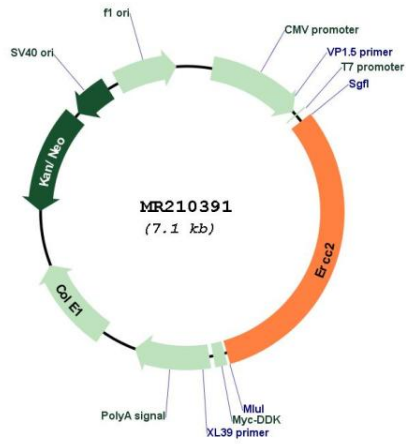
**Locus ID:** 13871

**Cytogenetics:** 7 9.62 cM

**MW:** 84.4 kDa

**Gene Summary:** ATP-dependent 5'-3' DNA helicase, component of the general transcription and DNA repair factor IIH (TFIIH) core complex, which is involved in general and transcription-coupled nucleotide excision repair (NER) of damaged DNA and, when complexed to CAK, in RNA transcription by RNA polymerase II. In NER, TFIIH acts by opening DNA around the lesion to allow the excision of the damaged oligonucleotide and its replacement by a new DNA fragment. The ATP-dependent helicase activity of XPD/ERCC2 is required for DNA opening. In transcription, TFIIH has an essential role in transcription initiation. When the pre-initiation complex (PIC) has been established, TFIIH is required for promoter opening and promoter escape. Phosphorylation of the C-terminal tail (CTD) of the largest subunit of RNA polymerase II by the kinase module CAK controls the initiation of transcription. XPD/ERCC2 acts by forming a bridge between CAK and the core-TFIIH complex. Involved in the regulation of vitamin-D receptor activity. As part of the mitotic spindle-associated MMXD complex it plays a role in chromosome segregation. Might have a role in aging process and could play a causative role in the generation of skin cancers.[UniProtKB/Swiss-Prot Function]

Product images:



Circular map for MR210391