

## Product datasheet for **MR210387**

### **Papolg (NM\_172555) Mouse Tagged ORF Clone**

#### **Product data:**

Product Type:	Expression Plasmids
Product Name:	Papolg (NM_172555) Mouse Tagged ORF Clone
Tag:	Myc-DDK
Symbol:	Papolg
Synonyms:	9630006B20Rik
Mammalian Cell Selection:	Neomycin
Vector:	pCMV6-Entry (PS100001)
E. coli Selection:	Kanamycin (25 ug/mL)



[View online »](#)

ORF Nucleotide  
Sequence:

>MR210387 representing NM\_172555  
 Red=Cloning site Blue=ORF Green=Tags(s)

TTTTGTAATACGACTCACTATAGGGCGGCCGGGAATTCGTCGACTGGATCCGGTACCGAGGAGATCTGCC  
 GCC**CGCATCGCC**

ATGAAAGAGATGTCTGCAAACTATGCTGGACAGCCAGCGTCAACAGAAGCATTATGGAATTACCTCTC  
 CAATTAGTTTGGCATGTCTAAAGAAATTGATCATATTTATACACAGAAGTTAATTGATGCCATGAAGCC  
 ATTTGGAGTATTTGAAGATGAGGAAGAATTGAACCACAGGCTGGTTGTTCTTGGTAAATTGAACAATTTA  
 GTAAAAGAATGGATTTCTGACATCAGTGAAGTAAAGTCTCCACCTTCTGTTGTGGCTACTGTTGGTG  
 GTAAAATTTTACATTTGGATCTTACAGGCTTGGAGTACACACCAAGGAGCTGATATTGATGCACTTTG  
 TGTGGCCCAAGACATGTAGAGAGATCAGATTTTTTTCAGTCTTTTTTGAAAAATTGAAACATCAAGAT  
 GGCATTAGAACTTAAGAGCTGTAGAAGATGCTTTTGTACCTGTTATAAAATTTGAATTTGATGGTATTG  
 AAATTGATCTAGTCTTTGCAAGACTGGCAATACAAACCATATCAGATAATTTAGACCTAAGAGATGACTC  
 TCGCCTGAGAAGCCTTGATATACGGTGCATTAGAAGTTTAAATGGATGTAGAGTTACTGATGAAATTTTG  
 CACTTAGTGCCAAATAAAGAACTTTTAGACTCACCTAAGAGCAGTCAAATTATGGGCAAGCGCCGTG  
 GTATTTATTCCAATATGCTGGGATTCCTTGGTGGTGTCTCCTGGGCAATGCTAGTTGCCAGAACTTGCCA  
 ACTGTACCCAAATGCAGCAGCTTCAACTTTAGTTCACAAGTTTTTTTTTAGTTTTTTTCCAATGGGAATGG  
 CCAATCTCTGTGCTGTTGAAGCAACCAGAAGAAAGCAACTTGAACCTGCCTGTCTGGGATCCTCGGGTAA  
 ATCCGTGACAGAGGTATCATCTTATGCCAATAATTACCCTGCCTACCCACAACAGAATTTACATATAA  
 TGTGTCTACATCAACTCGAACAGTAATGGTAGAAGAATTTAAACAAGGCTTGCAGTTACAGATGAAATT  
 CTTCAAGGAAATCAGATTGGTCCAACTATTAGAGCCACCAATTTCTTTCAAAAATACAGACATTATA  
 TAGTACTGACTGCCAGTGCATCAACAGAAGAGAACCATCTAGAATGGGTTGGATTAGTAGAATCTAAAAT  
 CCGTGTACTTGTGGAACTTGGAACGGAATGAATTTATTACTCTTGCCCATGTGAATCCCAAGTCATTC  
 CCAGGAAATAAAGAACATCATAAAGCCAACAATTACGTATCAATGTGGTTCCTTGGGATAATTTTTCGGA  
 GAGTAGAAAATGCAGAAAGTGTAAACATAGACTTGACATATGATATCCAGTCATTTACTGATACAGTGTA  
 CAGGCAGGCAACAATATAAATATGCTGAAGGATGGGATGAAAATTGAAGCAACTCATGTAAGAAAAAG  
 CAGCTTCATCATTACCTACCAGCAGAGATTCTTCAAAAAGAAGAAAAAGAGTCTTTCTGATGTAAGTCGGA  
 GTTCAGGGGGCCTTCAGTCCAAAAGATCATCTCTGGATAGCACTTGTCTGGATAGCTCCAGAGACTGA  
 CAGTGGAAACACCTTTTAACTCTCCGGTGTCTGCAATAAGCCTTCCAACCCAGACAGCCCCACAGGAGAA  
 ATAGAAAGGAGTAGTGTGAGCCTGTGGCTGTGGTGTGGAGAAGCTGCCAAGTGTCCCCCAGCTCAGG  
 GGCTGTCCATTCCAGTCATTGGTGCAAAGTTGACCCTACAGCAAAGCTGTATCCTCCCCAGCTGTGTG  
 CACCATTCTACTGTAGTAGGACGGAATGTTATTCCTAGAATCACAACACCCACAAACCTGTCCAGGGA  
 CAACCACATCTAAATGGGATATCAAATATTACTAAGAATGTTACACCCAAAAGATCCCATTCGCCACCTA  
 CAGATGGGACTTCTAAGAGGCTGAAAGACATAGAAAAGTTCATTTCGACTTGAGTCAGCATTTAAGGAGTC  
 CCGGGCTGCCGAGGATCGGAAAAGAAAACCAATGGATTGATTGGTGGAGAATCTATGCCTATTCCTCAACT  
 ATTGATACGGCACGAAAAGAGACTACCCAGTAAAGAACTCCAGATTCATCATCTCCAGTTCAGCAA  
 ACAACATCCGTGTCATCAAAAACCTCGATCCGCCTGACCCTAATCGG

**ACGCGT**ACGCGGCCGCTCGAGCAGAACTCATCTCAGAAGAGGATCTGGCAGCAAATGATATCCTGGATT  
 ACAAGGATGACGACGATAAGGTTTAA

**Protein Sequence:** >MR210387 representing NM\_172555  
Red=Cloning site Green=Tags(s)

MKEMSANTMLDSQRQKHYGITSPISLACPKEIDHIYTQKLIDAMKPFVFEDEEELNHRLVVLGKLNLL  
 VKEWISDISESKNLPPSVVATVGGKIFTFGSYRLGVHTKGADIDALCVAPRHVERSDFFQSF FEKLKHQD  
 GIRNLRAVEDAFVPVIKFEFDGIEIDL VFARLAIQTISDNLDRDSSLRSLDIRCIRSLNGCRVTDEIL  
 HLVPNKETFRLLTRAVKLVAKRRGIYSNMLGFLGGVSWAMLVARTCQLYPNAAASTLVHKFFLVFSKWEW  
 PNPVLLKQPEESNLNLPVWDPVNPSPDRYHLMPIITPAYPQQNSTYNYVSTSTRTVMVEEFKQGLAVTDEI  
 LQGKSDWSKLLLEPPNFFQKYRHYIVLTASASTEENHLEWVGLVESKIRVLVGNLNERNEFITLAHVNPQSF  
 PGNKEHHKANNYVSMWFLGIIFRRVENAESVNIDLTYDIQSFTDTVYRQANNINMLKDGMIETHVKKK  
 QLHHYLP AEILQKKKSLSDVSRSSGGLQSKRSSLDSTCLDSSRD TDSGTPFNSPVSANKPSNPDSPTGE  
 IERSSAEPVAVVVEKLPSVPPAQLSIPVIGAKVDPTAKAVSSPAVCTIPTVVGRNVIPRITTPHNPVQG  
 QPHLNGISNITKNVTPKRSHSPPTDGTSKRLKDIEKFIRLESFAKESRAAEDRKRKPMDSIGGESMPIPT  
 IDTARKRLPSKELPDSSSPVANNIRVIKNSIRLTLNR

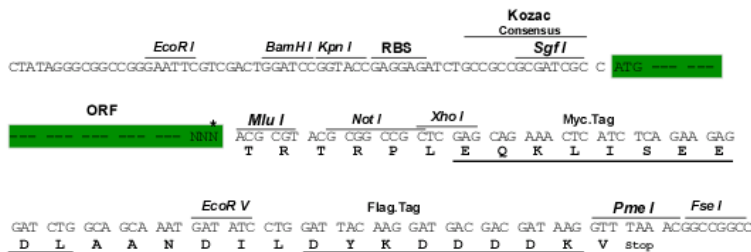
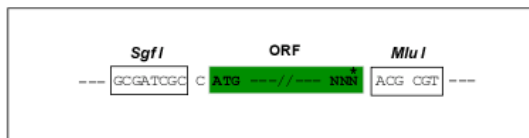
TRTRPLEQKLISEEDLAANDILDYKDDDDKV

**Chromatograms:** [https://cdn.origene.com/chromatograms/mm9098\\_b05.zip](https://cdn.origene.com/chromatograms/mm9098_b05.zip)

**Restriction Sites:** SgfI-MluI

**Cloning Scheme:**

Cloning sites used for ORF Shuttling:



\* The last codon before the Stop codon of the ORF

**ACCN:** NM\_172555

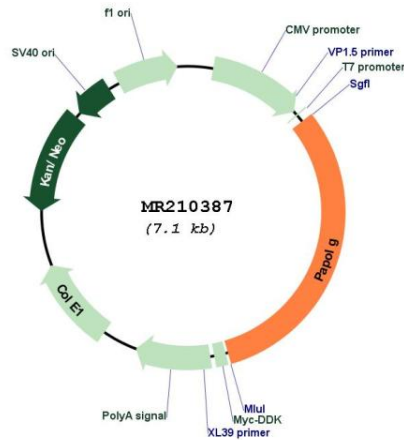
**ORF Size:** 2217 bp

**OTI Disclaimer:** The molecular sequence of this clone aligns with the gene accession number as a point of reference only. However, individual transcript sequences of the same gene can differ through naturally occurring variations (e.g. polymorphisms), each with its own valid existence. This clone is substantially in agreement with the reference, but a complete review of all prevailing variants is recommended prior to use. [More info](#)

**OTI Annotation:** This clone was engineered to express the complete ORF with an expression tag. Expression varies depending on the nature of the gene.

- Components:** The ORF clone is ion-exchange column purified and shipped in a 2D barcoded Matrix tube containing 10ug of transfection-ready, dried plasmid DNA (reconstitute with 100 ul of water).
- Reconstitution Method:**
1. Centrifuge at 5,000xg for 5min.
  2. Carefully open the tube and add 100ul of sterile water to dissolve the DNA.
  3. Close the tube and incubate for 10 minutes at room temperature.
  4. Briefly vortex the tube and then do a quick spin (less than 5000xg) to concentrate the liquid at the bottom.
  5. Store the suspended plasmid at -20°C. The DNA is stable for at least one year from date of shipping when stored at -20°C.
- RefSeq:** [NM\\_172555.2](#), [NP\\_766143.2](#)
- RefSeq Size:** 3776 bp
- RefSeq ORF:** 2220 bp
- Locus ID:** 216578
- UniProt ID:** [Q6PCL9](#)
- Cytogenetics:** 11 A3.2
- MW:** 83 kDa
- Gene Summary:** Responsible for the post-transcriptional adenylation of the 3'-terminal of mRNA precursors and several small RNAs including signal recognition particle (SRP) RNA, nuclear 7SK RNA, U2 small nuclear RNA, and ribosomal 5S RNA.[UniProtKB/Swiss-Prot Function]

**Product images:**



Circular map for MR210387