

Product datasheet for **MR210374**

Dpp3 (NM_133803) Mouse Tagged ORF Clone

Product data:

Product Type:	Expression Plasmids
Product Name:	Dpp3 (NM_133803) Mouse Tagged ORF Clone
Tag:	Myc-DDK
Symbol:	Dpp3
Synonyms:	4930533O14Rik; C86324; DPP III
Mammalian Cell Selection:	Neomycin
Vector:	pCMV6-Entry (PS100001)
E. coli Selection:	Kanamycin (25 ug/mL)



[View online »](#)

ORF Nucleotide
Sequence:

>MR210374 ORF sequence
Red=Cloning site Blue=ORF Green=Tags(s)

TTTTGTAATACGACTCACTATAGGGCGGCCGGGAATTCGTCGACTGGATCCGGTACCGAGGAGATCTGCC
GCC**GCGATCGCC**

ATGGCAGATACCCAGTACATCCTGCCCAATGACATTGGTGTGTCTAGCCTGAACTGCAGGGAGGCATTCC
GCCTGCTGTACCCACAGAGCGCCTCTATGCCCATCACCTGTCTAGAGCTGCTTGGTATGGGGCCCTGGC
AGTGCTGTCCAGACATCCCCTGAAGCCCCCTACATCTATGCCCTGCTTAGCCGCTCTTCCGTGCCAG
GACCCTGACCAGCTGCGCCAACATGCCCTGGTGAGGGTCTTACTGAAGAAGAGTACCAGGCATTCTGG
TCTACGCTGCAGGGTCTACTCCAACATGGGCACTACAAGTCTTTGGTGACACCAAGTTTGTCTTAA
CCTGCCAAGGACAAGCTGGGACGTGTGATCCTGGGGAGTAAGGCTGCCAGCAGCGCCAGAAGAAGTC
AGGGACCTTTGGCAGACCTGTGGGACCTTATGTTCTCCCTGGAACCGAGGCTTCGACATCTTGGGCTGG
GGAAGGAGGGAGTACCACCTATTTCTCTGGGATTGTACCATGGAAGATGCTAAGCTGGCCAGGACTT
TCTGGACTCTCAGAACCTCAGTGCATACAACACTCGGCTCTTCAAGGTCGTTGACCAGGAAGGGAAGTCC
CACTATGAGGTGCGGCTGGCTTCACTCCCAACACAGACCCTGCTCTCGACTCTGAATTGACCTCCAAGC
TGAAGAGATATGAGTTCAGGGGAACATTTCCAGGTCACCCGGGGGACTATGCCCCATCCTCCAGAA
GGTGGTAGAACACTTGGAGAAAGCTAAGGCTTATGCAGCCAACAGCCACCAGGAGCAATGCTGGCTCAG
TACGTGGAGAGCTTACCCAGGGCTCCATTGAGGCCCATAAAGAGGGGCTCCCGCTTCTGGATTGAGGACA
AAGGCCCATTTAGAGAGTTACATTGGCTTATTGAGAGCTACCGTACCCCTTTGGCTCCCGAGGAGA
GTTTGAAGGCTTCGTGGCCATGGTAAACAAAGCCATGAGTGCCAAGTTCGAGCGGCTGGTCGCGAGTGT
GAGCAGCTGTGAAGGAGCTGCCCTGGCTCTTGCCTTCGAGAAGGACAAGTTCCTCACCCCTGACTTCA
CCTCCCTGGAGCTCCTCACCTTTGTCTGGCTCTGGCATTCTGCGGGCATCAACATCCCCAACTACGATGA
CCTGAGACAGACAGAAGGCTTTAAGAATGTATCGCTGGGGAATGTGCTGGCTGTGGCTATGCCGAAAG
CGGGAGAAGCTCACGTTCTTGGAGGAGGAAGACAAGGACCTGTATATCCGCTGGAAGGGCCGCTCTTTG
ATGTGCAGGTGGGGTTACACGAAGTGTGGCCATGGCAGCGCAAGCTCTTGTACAGGATGAGAAAGG
TGCTTTCAACTTTGACAAGGAGACTGTGATCAACCCAGAGACTGGGGAACAGATCCAGAGCTGGTACCGG
AGTGGAGAGACGTGGGATAGCAAATTCAGCACCATTGCCCTCAGCTACGAAGAGTGCCGGCCGAGAGTG
TGGGCTCTACCTCTGTCTCAACCCCAAGTGTGGAGATCTTTGGCTTTGAGGGAGCTGATGCAGAAGA
TGTAATCTACGTGAAGTGGCTCAACATGGTTCGGGCTGGCTTGTGGCTTTGAGTTCACACCCAGAG
GCAGCAACTGGCGACAGGCCACATGCAGGCCGGTTTGTGATCCTGCGGGTTTGTGGAAGCTGGCG
AAGGACTCGTTACCGTCACTCCACACAGGCTCTGATGGGCGCCCTGATGCCCGGGTCCGCTGGACCG
CAGCAAGATCCGGTCAGTGGGCAGACCTGCCTTGAGCGGTTCTGCGGAGACTCCAGGTGCTGAAGTCC
ACGGGGGACGTGGTGCAGGGGCGGGCCCTGTACGAGGGCTATGCAGCAGTCACTGACGCACCTCCAGAGT
GCTTCTTACCCTAAGGGATACGGTACTGCTGCGCAAGGAGTCCCGGAAGCTTATTGTTCAACCCAAAC
TCGCTTGAAGGCTCAGAAGTACAACCTGTGGAGTATGAGGCCTCAGCCGCTGGCCTCATCCGCTCCTTC
TGTGAGCGGTTTCCCGAGGATGGGCCGAGTTGGAGGAGGTTCTTATCCAGCTGGCTGCAGCAGATGCC
GATTCTGGAGGAACCGCCAGGAGGCCACCTGGCCAGGCT

ACGCGTACGCGGCGCTCGAGCAGAACTCATCTCAGAAGAGGATCTGGCAGCAAATGATATCCTGGATT
ACAAGGATGACGACGATAAGGTTTAA

Protein Sequence: >MR210374 protein sequence
 Red=Cloning site Green=Tags(s)

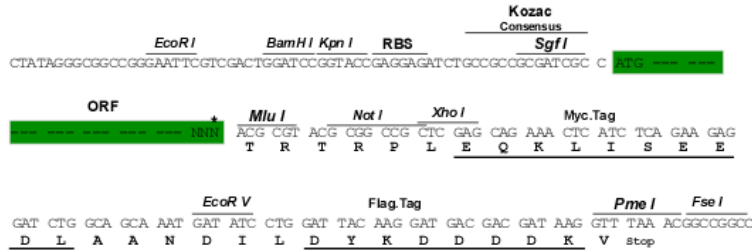
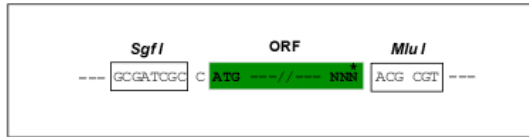
MADTQYILPNDIGVSSLNCREAFRLLSPTERLYAHLHLSRAAWYGGGLAVLLQTSPEAPYIYALLSRLFRAQ
 DPDQLRQHALLAEGLTEEEYQAFVYAAGVYSNMGNYSFGDTKFPNLPKDKLGRVILGSKAAQQRPEEV
 RDLWQTCGDLMFSLERLRHLGLGKEGVTTYFSGDCTMEDAKLAQDFLDSQNL SAYNTRLFKVVDQEGKS
 HYEVRLASVLENTDPAIDSELT SKLKRYEFQGNHFQVTRGDYAPILQKVVEHLEKAKAYAANSHQEMLAQ
 YVESFTQGSIEAHKGRSRFWIQDKGPVIVSYIGFIESYRDPFGSRGEFEGFVAMVKNKAMSAKFERLVASA
 EQLLKELPWPLAFEKDKFLTPDFSLDVLTFAGSGIPAGINIPNYDDL RQTEGFKNVSLGNVLAVAYAAK
 REKLTFLLEEDKDLIRWKGPSFDVQVGLHELLGHGSGKLFVQDEKGFNFDKETVINPETGEQIQSWYR
 SGETWDSKFSTIASSYEECRAESVGLYLCLNPQVLEIFGFEGADAEDVIYVNWLNVMVRAGLLALEFYTP
 AANWRQAHMQARFVILRVLLEAGEGLVTPTTGS DGRPDARVRLDRSKIRSVGRPALERFLRRLQVLKS
 TGDVVAGRALYEGYAAVTDAPPECFLTRDVTLLRKESRKLIVQPNTRLEGSEVQLVEYEASAAGLIRSF
 CERFPEDGPELEEVLIQLAAADARFWRNQAQAEAPPQA

TRTRPLEQKLI SEEDLAANDILDYKDDDDKV

Restriction Sites: SgfI-MluI

Cloning Scheme:

Cloning sites used for ORF Shuttling:



* The last codon before the Stop codon of the ORF

ACCN: NM_133803

ORF Size: 2217 bp

OTI Disclaimer: The molecular sequence of this clone aligns with the gene accession number as a point of reference only. However, individual transcript sequences of the same gene can differ through naturally occurring variations (e.g. polymorphisms), each with its own valid existence. This clone is substantially in agreement with the reference, but a complete review of all prevailing variants is recommended prior to use. [More info](#)

OTI Annotation: This clone was engineered to express the complete ORF with an expression tag. Expression varies depending on the nature of the gene.

Components: The ORF clone is ion-exchange column purified and shipped in a 2D barcoded Matrix tube containing 10ug of transfection-ready, dried plasmid DNA (reconstitute with 100 ul of water).

Reconstitution Method:

1. Centrifuge at 5,000xg for 5min.
2. Carefully open the tube and add 100ul of sterile water to dissolve the DNA.
3. Close the tube and incubate for 10 minutes at room temperature.
4. Briefly vortex the tube and then do a quick spin (less than 5000xg) to concentrate the liquid at the bottom.
5. Store the suspended plasmid at -20°C. The DNA is stable for at least one year from date of shipping when stored at -20°C.

RefSeq: [NM_133803.1](#), [NM_133803.2](#), [NP_598564.1](#)

RefSeq Size: 2683 bp

RefSeq ORF: 2217 bp

Locus ID: 75221

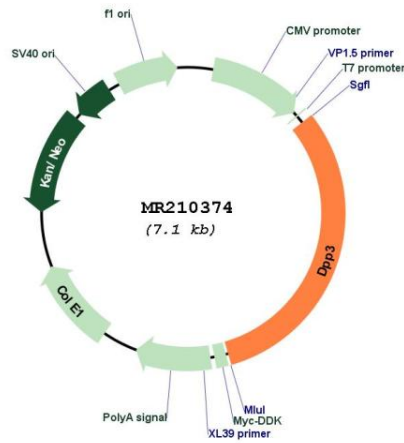
UniProt ID: [Q99KK7](#)

Cytogenetics: 19 A

MW: 83 kDa

Gene Summary: Cleaves and degrades bioactive peptides, including angiotensin, Leu-enkephalin and Met-enkephalin. Also cleaves Arg-Arg-beta-naphthylamide (in vitro).[UniProtKB/Swiss-Prot Function]

Product images:



Circular map for MR210374