

## Product datasheet for **MR210365**

### **Dvl2 (NM\_007888) Mouse Tagged ORF Clone**

#### **Product data:**

Product Type:	Expression Plasmids
Product Name:	Dvl2 (NM_007888) Mouse Tagged ORF Clone
Tag:	Myc-DDK
Symbol:	Dvl2
Mammalian Cell Selection:	Neomycin
Vector:	pCMV6-Entry (PS100001)
E. coli Selection:	Kanamycin (25 ug/mL)



[View online »](#)

ORF Nucleotide  
Sequence:

>MR210365 ORF sequence  
Red=Cloning site Blue=ORF Green=Tags(s)

TTTTGTAATACGACTCACTATAGGGCGGCCGGGAATTCGTCGACTGGATCCGGTACCGAGGAGATCTGCC  
GCCGCGATCGCC

ATGGCGGGCAGCAGCGCGGGGGCGGTGGTGTAGCGGAGACGAAGGTGATTTACCATCTGGATGAAGAAG  
AGACTCCTTACCTGGTGAAGATCCCTGTCCCGGGAGCGCATCACGCTCGGCGATTTCAAGAGCGTTTT  
GCAGCGGCCCGCGGGCGCAAGTACTTTTTCAAGTCCATGGATCAGGATTTGGGGTGGTGAAGGAAGAG  
ATCTCCGATGACAATGCCCGCTACCTTCTTCAATGGAAGGGTGTCTCCTGGCTTGTGTCTGATGAGATA  
CCCCACAGCCTGAGGTGGCTCCCCAGCCCATGAGTCTCGGACAGAACTGGTTCTCCGCTCCACCCTT  
ACCCCTTTGCCACCAGAAAGGACCAGTGAATTGGGGACTCAAGGCTCCATCCTTCCACCCTAATGTA  
TCCAGCAGCCATGAAAATCTAGAGCCTGAGACAGAGACCGAATCTGTCTGATCACTGAGGCGAGACCGAC  
CTAGGAGGAGAGACAGCAGTGAACATGGCGCTGGTGGCCACAGGCTGGTGGCCCTCGAGGCTGGAGCG  
CCACTGGCTGGCTACGAGAGCTTCCACCCTCATGACCAGTGAAGTACCAGCTAGGAGAC  
TCGGATGAGGATGACACCATGAGTAGGTTGAGCAGCTCCACTGAGCAGAGCAGTGCCTCCCGCTCCTCA  
AGCGCCACCGAAGGCGAAGGAAGCAGCGGCCCGCCACGATGGAGAGGACCTCATCCTTACGAGTGTAC  
CGATTCACAAATGTCTCTCAACATCATCACGGTACGCTCAACATGGAGAAGTACAACTTCTGGGCATC  
TCCATTGTGGCCAAAGTAAACGAGCGTGGTGTGGGGGCATCTACATCGGCTCCATCATGAAAGGGGGCG  
CGGTGGCTGCGGACGGCGGATCGAGCCTGGAGACATGCTTTGACAGTAAATGATTAACCTTTGAGAA  
CATGAGCAACGACGATGCTGTACGAGTGTGAGAGACATCGTGCAACAAGCCAGGCCCCATCGTGTGACC  
GTGGCCAAAGTGTGGGACCCGCTCCCCAGGCTACTTACCCTCCCTCGAAATGAGCCCATCCAGCCCA  
TCGACCCAGCGCTGGGTGTCGCACTCGGCTGCGCTGACTGGCGCTTCCCTGCTTACCCTGGCTCCTC  
ATCTATGAGCACTATCACATCTGGCTCCTCTCTGCTGATGGCTGCGAAGGCGGGGTCTCTGTCCAC  
ATGGACATGGCCTCTGTACCAAGGCCATGGCAGCCCCAGAGTCTGGGCTCGAAGTCCGGGACCGCATGT  
GGCTCAAGATCACCATCCCAAACGCCTTCTAGGCTCCGATGTGGTGGACTGGCTGTACCATCACGTGGA  
AGGTTTTCTGAGCGCGGGAGGCCCGCAAGTATGCCAGTGGGCTGTTGAAGGCGGGACTCATCCGGCAC  
ACCGTCAACAAGATTACTTTCTCTGAGCAGTGTATTATGTCTTCGGGGACCTCAGTGGTGGCTGTGAGA  
GTTACCTAGTTAACCTCTCTCTGAATGACAATGACGGTCCAGTGGGCTTCCAGACCAGGATACCCTGGC  
ACCTCTGCCTGGAGCTACTCCCTGGCCCTGCTGCCACCTTCTCCTACCAGTATCCAGCGCCACACCCC  
TACAGCCCCAGCCTCCACCCTACCACGAGCTTCTTCTGTACACCTATGGTGGAGGCAGTCCAGCAGCC  
AGCACAGTGAAGGGAGCCGGAGCAGCGGTCGACAAGAAGCGATGGGGGGCTGGGCGCACAGGCAGGCC  
TGAGGAACGGGCCCTGAGTCCAAGTCCGGCAGTGGCAGTGAAGTCAAGTCTCCAGCCGGGGAGGCAGC  
CTTCGGCGGGGTGGGAGCCTGGTGGGACTGGTGTGGCGGCCCTCCTCCATCCAGGGGCTCGACAGGCG  
CTCCTCCTAATCTCCGAGCTTCTCCGGGCTCCATCCCTATGGAGCCCCATCTGGCATGGCTCTCCCTA  
TAACCCCATGATGGTAGTTATGATGCCTCCACCCCAACCCCTGTCTCCACAGCAGTGCAGCCCCCTGGT  
GCCCTCCAGTCAGAGACCTGGGCTCCGTGCCCCAGAACTGACAGCTAGCCGTACAGGCTTCCACATGG  
CCATGGGCAACCCAGTGAAGTTTTTGTGGATGTTATG

ACGCGTACGCGGCCGCTCGAGCAGAACTCATCTCAGAAGAGGATCTGGCAGCAAATGATATCCTGGATT  
ACAAGGATGACGACGATAAGGTTTAA

**Protein Sequence:** >MR210365 protein sequence  
 Red=Cloning site Green=Tags(s)

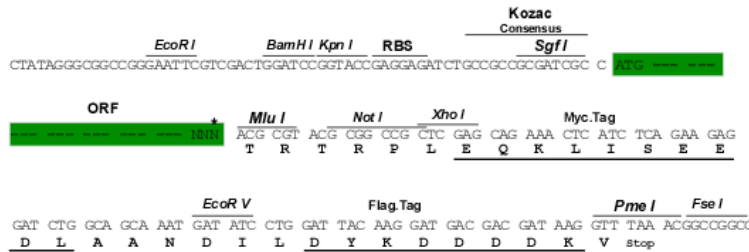
MAGSSAGGGVGETKVIYHLDEEETPYLVKIPVPAERITLGDFFKSVLQRPAGAKYFFKSMDDQDFGVVKEE  
 ISDDNARLPCFNRRVSWLVSSDTPQVEVAPPAHESRTELVPPPPPLPPLPPERTSGIGDSRPPSFHPNV  
 SSSHENLEPETETESVSVSLRRDRPRRRDSSEHGAGGHRPGGSRLEHLRHLAGYESSSTLMTSELESTSLGD  
 SDEDDTMSRFSSSTEQSSASRLLRHRRRRKQPPRMERTSSFSSVTDSTMSLNIITVTLNMEKYNFLGI  
 SIVGQSNERGDGGIYIGSIMKGGAVAADGRIEPGDMLLQVNDINFENMSNDDAVRVLRLDIVHKPGPIVLT  
 VAKCWDPSQAYFTLPRNEPIQPIDPAAWVSHSAALTGAFPAYPGSSSMSTITSGSSLPDGCEGRGLSVH  
 MDASVTKAMAAPESGLEVRDRMWLKITIPNAFLGSDVVDWLYHHVEGFPERREARKYASGLLKAGLIRH  
 TVNKITFSEQCYVFGDLGGCESYLVNLSLNDNDGSSGASDQDTLAPLPATPWPLPTFSYQYPAPHP  
 YSPQPPPYHELSSYTYGGGSASSQHSEGRSSGSTRSDGGAGRTGRPEERAPESKSGSGSESELSSRGGG  
 LRRGGEPGGTGDGPPPSRGSTGAPPNLRALPGLHPYGAPSGMALPYNPMMVMMPPPPPPVSTAVQPPG  
 APPVRDLGSPPELTASRQSFHMAMGNPSEFFVDVM

TRTRPLEQKLISEEDLAANDILDYKDDDDKV

**Restriction Sites:** SgfI-MluI

**Cloning Scheme:**

Cloning sites used for ORF Shuttling:



\* The last codon before the Stop codon of the ORF

**ACCN:** NM\_007888

**ORF Size:** 2211 bp

**OTI Disclaimer:** The molecular sequence of this clone aligns with the gene accession number as a point of reference only. However, individual transcript sequences of the same gene can differ through naturally occurring variations (e.g. polymorphisms), each with its own valid existence. This clone is substantially in agreement with the reference, but a complete review of all prevailing variants is recommended prior to use. [More info](#)

**OTI Annotation:** This clone was engineered to express the complete ORF with an expression tag. Expression varies depending on the nature of the gene.

**Components:** The ORF clone is ion-exchange column purified and shipped in a 2D barcoded Matrix tube containing 10ug of transfection-ready, dried plasmid DNA (reconstitute with 100 ul of water).

**Reconstitution Method:**

1. Centrifuge at 5,000xg for 5min.
2. Carefully open the tube and add 100ul of sterile water to dissolve the DNA.
3. Close the tube and incubate for 10 minutes at room temperature.
4. Briefly vortex the tube and then do a quick spin (less than 5000xg) to concentrate the liquid at the bottom.
5. Store the suspended plasmid at -20°C. The DNA is stable for at least one year from date of shipping when stored at -20°C.

**RefSeq:** [NM\\_007888.2](#)

**RefSeq Size:** 2937 bp

**RefSeq ORF:** 2211 bp

**Locus ID:** 13543

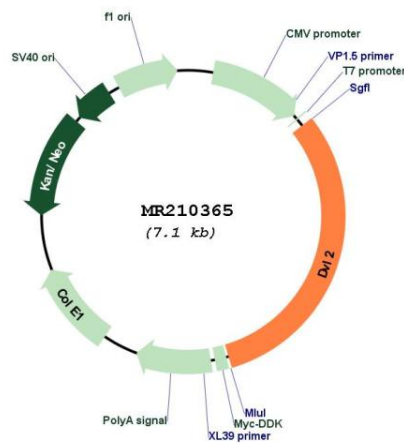
**UniProt ID:** [Q60838](#)

**Cytogenetics:** 11 42.96 cM

**MW:** 78.8 kDa

**Gene Summary:** Plays a role in the signal transduction pathways mediated by multiple Wnt genes. Participates both in canonical and non-canonical Wnt signaling by binding to the cytoplasmic C-terminus of frizzled family members and transducing the Wnt signal to down-stream effectors. Promotes internalization and degradation of frizzled proteins upon Wnt signaling. [UniProtKB/Swiss-Prot Function]

### Product images:



Circular map for MR210365