

Product datasheet for **MR210333**

Slc6a15 (NM_175328) Mouse Tagged ORF Clone

Product data:

Product Type:	Expression Plasmids
Product Name:	Slc6a15 (NM_175328) Mouse Tagged ORF Clone
Tag:	Myc-DDK
Symbol:	Slc6a15
Synonyms:	AA536730; AI326450; AI326451; v7-3
Mammalian Cell Selection:	Neomycin
Vector:	pCMV6-Entry (PS100001)
E. coli Selection:	Kanamycin (25 ug/mL)



[View online »](#)

ORF Nucleotide
Sequence:

>MR210333 ORF sequence
Red=Cloning site Blue=ORF Green=Tags(s)

TTTTGTAATACGACTCACTATAGGGCGGCCGGGAATTCGTCGACTGGATCCGGTACCGAGGAGATCTGCC
GCC**CGCATCGCC**

ATGCCTAAGAATAGCAAAGTGGTAAAGAGAGATTTGGATGATGATGTCATTGAATCTGTCAAAGACCTCC
TGTCACGAAGACTCAGTGGAAGAGGTTTCTAAGAAGAGTGAAC TAATTGTCGATGTT CAGGAAGAGAA
AGATACAGATGCTGAAGATGGATCTGAAGCTGATGATGAAAGGCCAGCCTGGAACAGTAAGCTGCAATAC
ATTCTGGCCCAAGTTGGATTTTCTGTAGGTCTGGGGAATGTGTGGCGGTTCCCATACCTCTGCCAAAAGA
ATGGTGGTGGTGCATATCTTTGCGTATTTAATACTACTTCTGGTGATAGGAATCCACTCTTTTTCT
GGAAC TTTCTGTGGTCAAAGAATTCGAAGAGGCAGCATTGGGGTTTGAATTACATAAGCCCTAAATTG
GGTGGGATTGGCTTCGAAGCTGTGTAGTGTGCTATTTGTGGCTCTCTACTACAATGTCATCATTGGCT
GGACATTATTTACTTTCTCAGTCTTTTCAACAACCTCTTCTTGGGATCAATGCCCCCTGGTGAAAAA
CGCATCTCATACTTATGTTGAGCCAGAATGTGAACAAAGTCTGCCACCACCTATTACTGGTACCGGGAA
GCACTGGATATCACAGCTCCATCTCTGACAGTGGAGGCTTAAACTGGAAGATGACGGTCTGCCTTCTGG
TTGCCTGGGTCATGGTTTGTCTGGCCATGATCAAAGGCATTCACTCCTCTGGAAAAATCATGATTTTCAG
TTCTCTGTTCCCTACGTGGTCTTATATGTTTCTAATAAGATCTCTCCTTTTAAATGGTTCAATTGAT
GGCATCCGACACATGTTCACTCCTAAGCTGGAATGATGTTGGAGCCCAAGGTTTGGAGAGAGGCAGCAA
CTCAGGTGTTCTTTGCATTGGGTTTGGGATTTGGTGGAGTCATCGCGTTTTCAAGTTATAACAAGAGAGA
CAACAAC TGCCACTTCGATGCTGCCTAGTGTCTTTCACTCAACTTTTCACTTCAGTTCTGGCAACTG
GTGGTGTTCAGTTCTGGGTTCAAAGCCAATATCGTAAATGAAAAATGCATTTCAAAAACCTCCGAGA
TGATCTTGAAACTTTTGAAAAATGGAAACATTAGTTGGGATGTCATTTCCCATCACACTCAACCTCTCAGC
TGTCACGTGGAAGATTATCGTTTAGTTTACGACATCATTCAAAAAGTGAAGGAGGAGGATTTGCTGTT
CTTCATCTCAACGCTGTCAAATTGAGGATGAGCTAAATAAAGCTGTGCAGGGCACTGGCTTGGCTTTCA
TTGCCTTTACAGAGGCCATGACACATTTCCCTGCATCTCCTTTCTGGTCAGTGATGTTTTTCTCATGTT
GATAAATCTCGGCCTCGGCAGCATGTTTGAACAATTGAAGGGATCATCACTCCTATTGTGGATACCTTC
AAAGTGAGGAAGGAAATACTCACTGTTATCTGTTGCCTCCTGGCATTGTGATTGGCTTGATATTCGTGC
AGCGCTCTGGAATTACTTCGTGACAATGTTTACGATTATTCTGCTACATTGCCTCTGCTAATTGTGGT
CATCTTGGAGAATATTGCCGTGAGCTTTGTTTATGGCATAGATAAGTTTATAGAAGACCTCACAGACATG
TTAGGATTTGCTCCAAGCAAATATTACTATTATATGTGGAATACATTTCTCCTCTAATGCTACTAACGT
TGCTAATAGCTAGCATTGTGAATATGGGATTAAGTCTCCCGGATATAATGCATGGATCAAGGAGAAGGC
ATCGGAAGAATTTCTGAGCTACCCGATGTGGGGATGGTCGTCTGTTTCTCTCTGATGGTCTGGCCATA
CTTCTGTCCCAGTGGTGTTCATCATTGCTCGCTGCAACCTCATAGATGATAGTTCTGGTAACTGGCCT
CCGTGACCTATAAGAGAGGAAGAGTCTGAAGGAACCTGTGAACTTGAAGGAGATGACGCAAGCCTCAT
TCATGGAAGATACCGAGTGAATGTCTCTCAAATTTGGTAAAAATATTTATCGAAAACAAAGTGGT
TCCCAACACTGGATACTGCTCCAATGGACGCTATGGGATTTGGTATTTGATGGCAGACATGCCAGATA
TGCCAGAGTCTGACTTG

ACGCGTACGCGGCCGCTCGAGCAGAACTCATCTCAGAAGAGGATCTGGCAGCAAATGATATCCTGGATT
ACAAGGATGACGACGATAAGGTTTAA

Protein Sequence: >MR210333 protein sequence
 Red=Cloning site Green=Tags(s)

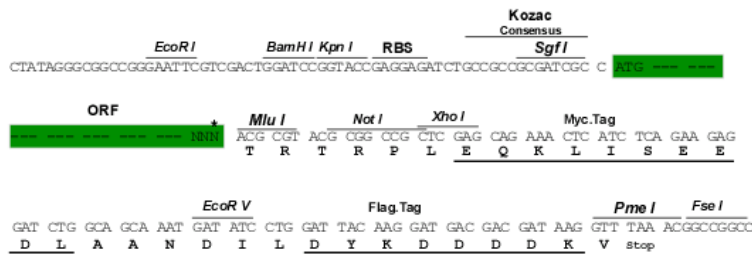
MPKNSKVVKRDLDDVIESVKDLLSNEDSVVEVSKKSELIVDVQEEKDTAEDGSEADDERPAWNSKLQY
 ILAQVGFVSVGLGNVWRFPYLCQKNGGGAYLLPYLILLLVIGIPLFFLELSVGQRIRRGSIQVWNYISP
 KLGIGFASCVVVCFVALYNNVIIGWTLFYFSQSFQQPLPWCQPLVKNASHTYVEPECEQSSATTYYWYRE
 ALDITSSISDSGGLNWKMTVCLLVAWVMVCLAMIKGIQSSGKIMYFSSLFPYVVLICFLIRSLLLNGSID
 GIRHMFTPKLEMMLEPKVWREAATQVFFALGLGFGGVI AFSSYNKRDNCHFDVAVLVSFINFFTSVLATL
 VVFAVLGFKANIVNEKCI SQNSEMILKLLKMGNISWDVIPHHINLSAVTVEDYRLVYDIIQVKKEEFVAV
 LHLNACQIEDELNKA VQGTGLAFIAFTEAMTHFPASPFWVMFFLMLINLGLGSMFGTIEGIITPIVDTF
 KVRKEILTVICLLAFICIGLIFVQRSGNYFVTMFDDYSATLPLLVVILENIAVSVFYGIDKFIEDLTM
 LGFAPSKYYYYMWKYISPLMLLLTLLIASIVNMGLSPPGYNAWIKEKASEEFLSYPMWGMVVCFLMVLAI
 LPVPVVFII RRCLNIDSSGNLASVTYKRGRVLKEPVNLEGGDASLIHGKIPSEMSPNF GKNIYRKQSG
 SPTLDTAPNGRYGIGYLMADMPDMPESDL

TRTRPLEQKLISEEDLAANDILDYKDDDDKV

Restriction Sites: SgfI-MluI

Cloning Scheme:

Cloning sites used for ORF Shuttling:



* The last codon before the Stop codon of the ORF

ACCN: NM_175328

ORF Size: 2190 bp

OTI Disclaimer: The molecular sequence of this clone aligns with the gene accession number as a point of reference only. However, individual transcript sequences of the same gene can differ through naturally occurring variations (e.g. polymorphisms), each with its own valid existence. This clone is substantially in agreement with the reference, but a complete review of all prevailing variants is recommended prior to use. [More info](#)

OTI Annotation: This clone was engineered to express the complete ORF with an expression tag. Expression varies depending on the nature of the gene.

Components: The ORF clone is ion-exchange column purified and shipped in a 2D barcoded Matrix tube containing 10ug of transfection-ready, dried plasmid DNA (reconstitute with 100 ul of water).

Reconstitution Method:

1. Centrifuge at 5,000xg for 5min.
2. Carefully open the tube and add 100ul of sterile water to dissolve the DNA.
3. Close the tube and incubate for 10 minutes at room temperature.
4. Briefly vortex the tube and then do a quick spin (less than 5000xg) to concentrate the liquid at the bottom.
5. Store the suspended plasmid at -20°C. The DNA is stable for at least one year from date of shipping when stored at -20°C.

RefSeq: [NM_175328.3](#)

RefSeq Size: 3660 bp

RefSeq ORF: 2190 bp

Locus ID: 103098

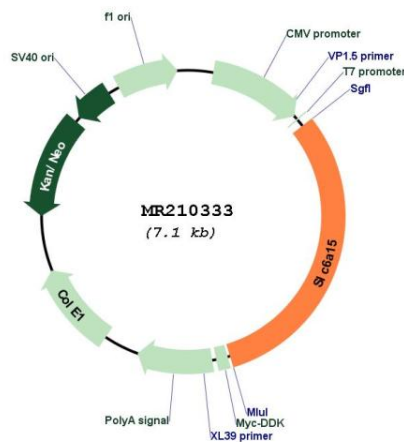
UniProt ID: [Q8BG16](#)

Cytogenetics: 10 D1

MW: 81.8 kDa

Gene Summary: Functions as a sodium-dependent neutral amino acid transporter. Exhibits preference for methionine and for the branched-chain amino acids, particularly leucine, valine and isoleucine. Mediates the saturable, pH-sensitive and electrogenic cotransport of proline and sodium ions with a stoichiometry of 1:1. May have a role as transporter for neurotransmitter precursors into neurons. In contrast to other members of the neurotransmitter transporter family, does not appear to be chloride-dependent (By similarity).[UniProtKB/Swiss-Prot Function]

Product images:



Circular map for MR210333