

## Product datasheet for **MR210324**

### **Plekhg3 (BC031136) Mouse Tagged ORF Clone**

#### **Product data:**

|                           |   |
|---------------------------|---|
| Product Type:             | Expression Plasmids                       |
| Product Name:             | Plekhg3 (BC031136) Mouse Tagged ORF Clone |
| Tag:                      | Myc-DDK                                   |
| Symbol:                   | Plekhg3                                   |
| Synonyms:                 | MGC40768                                  |
| Mammalian Cell Selection: | Neomycin                                  |
| Vector:                   | pCMV6-Entry (PS100001)                    |
| E. coli Selection:        | Kanamycin (25 ug/mL)                      |



[View online »](#)

**ORF Nucleotide Sequence:**

>MR210324 representing BC031136  
 Red=Cloning site Blue=ORF Green=Tags(s)

TTTTGTAATACGACTCACTATAGGGCGGCCGGGAATTCGTCGACTGGATCCGGTACCGAGGAGATCTGCC  
 GCC**CGGATCGCC**

ATGAGCTTTGAGTCTGTTTCTTCCCTGCCAGAGTTGAGACAGATCCTGAGCCTGGGGCCGAGCAGGAGG  
 CCTTTGCGGCCTTGAAGGTCCCAGCACAGAGGAGATGCCTTCAGACCCAGAATTTCCAGAAGCCCTGGA  
 GACACAGCTTCATGCCCCCAAGGGGCTGCTAGGAGTGGACAACCCAGCTGCTGTGGTGGACTTTGTGGAG  
 CCTGAGGGGTCTGAAGACCTTAAGCCCCTGAGTAGTGAGGAGGAAGAAGAAGAGGAAATGGAAGCCGCC  
 AGGAGCCTGAGAGCCTCTGCCACCCTCTGTGCTGGACCAGGCCAGTGTCAATTGCTGAGAGATTCGCCAG  
 TAGCTTCTCTCGGCGGAGCAGCCTGGCAATAGAGGATGGCAAATCCAGTGGTTTAGGGACACCACGGCTT  
 ATCAGCCGGAGCAGCAGTGTGCTTAGCCTGGAGGGCAGTATAAGGGCCTAGCCCGATGGAGCAGCATCG  
 GGGACTCCCTCAGCAACCCACCCACCCAGAAGTATCATTGGTGCAGACATGGTACAGACAATGGCCC  
 TTCTGTCAATGGGACAGAATCTCAAGTGCAGGCTCAGGCTGCCCCACGGAACAGGACAGATCTTCTGT  
 AAGAAAAAAGAATCAGCGTTGTCTACCCGAGACCGTCAGCTGCTGGACAAAATTAAGAACTACTATGAAA  
 ATGCAGAGCACCATGATGCTGGCTTCAGCATCCGTCGGCGGGAGAGCCTCTCCTATATCCCTAAAGGATT  
 GGTGCGCAGCTCTGTGTCCAGATTCAACAGCCTTCCCAAGCCAGATTAGAGCCAGCAGCTCCAGTTGGG  
 TACAAGAGGCCGGGAGTTCTCGTCCAGCCTCATGGACCTTGTGGTTCAGCTCCAGGTCCAGGACAGACA  
 AAGGGGACCCAGCTCCTATCACAGATGCTGAGTTCGTCATCTTCAGAAATGCAAAGATATGGGAAAG  
 AATGGAGTCTTCAGAGAGAAGTCCACGGACAGGGTCTGGCCAGAGCCAGGCCAATGGCTTTGAGCTACAA  
 GAGCCACTGTTTCATCTTGAGGAGCATGAACTGGGGCCATCACTGAGGAGTCTGCTGTGCTCTCCAG  
 AAAGTGCCTCCCCACCCAGCAACCCAGCCAGCCACCTGGCCCGGGAGCTCAAAGAGCTGGTGAAGA  
 GCTGAGCAGCAGTGTCCAGGGGAGCTGGTTACCCCACTGCACCCCGGATTGTGACAGCTCTCCCATGTG  
 ATGGACAGCCATGTGAGTGAAGGGTCAAAAACAAGGTCTACCAGTTGGCCCGCCAGTACAGCCTCCGAA  
 TTAAGAACATCAAGGCAGCTAGGCCACCTCTACAGTGGGAAAAAGTCACTCCTGACCAAGAGGAGCAGGT  
 CCCTTCCATTTCTGGCTGCCTGAGGAAGCTGGAGAGCTGTGAGGGGCAAGCCAGGAGGAAGCCTGTG  
 CTATCCCTCCTCAGCTATGAGCAGCTGGTGGCTCAGGAGCATGGCACGTCCAAGTCTTCCGCTGCCGTGG  
 AAACCTCTCCACGCCGTTTCTCCTTCAGCCCTTCTGCTGTAGCCCAAGAACCACCTCACCTGGGGCTCG  
 GTCCTCTGCTCGGAGCCCTCAGCCCTTTGACACCGAGACCTCAATTGGCCTGATGTCCGGGAGCTC  
 TGCTCAAATATACTTCCCACGACAAGACTGCTCAGGTCGAGAGCAGCTGGCCCGTAGCCTGCTGGTCA  
 ACAGGAGTCGCTCCCTGCCCGAGAACATCGTAGAACCTCCCATGTCTGGCAAGGCCGACCCGCTGCTGTGG  
 CCTGAACACCCACAGGCCCTGGGAGATGGGGAAGCCTCCAGCCTCCACTTCTGAGTCTCTCCCCAA  
 AGCCAGCTGAATGGAGGCGACGCCCTGTATGTACCCGAGACCTTACCCTGGAGAACAACCAGCGAGTGA  
 TCATTATGGAGAAGGGGCCCATCTAGCTCCACCGTGGGGCTGGAGGAAGACAGTGGGAAGGAATCAAG  
 TTCCCCAGTGGCTTTGAAGGGACAGGGCCAAGTTTCCAGGCGTCTGCAGAGTACCAGCCCAAAGAACAC  
 GGTCCCAGGACTCAGCAGACACAAACAACAGGGTAGAGTGAGAAACCTGAGGGAGAAGTTCAGGCCT  
 TGAACCTGTGGGT

**ACGCGT**ACGCGGCCGCTCGAGCAGAACTCATCTCAGAAGAGGATCTGGCAGCAAATGATATCCTGGATT  
 ACAAGGATGACGACGATAAGGTTTAA

**Protein Sequence:** >MR210324 representing BC031136  
Red=Cloning site Green=Tags(s)

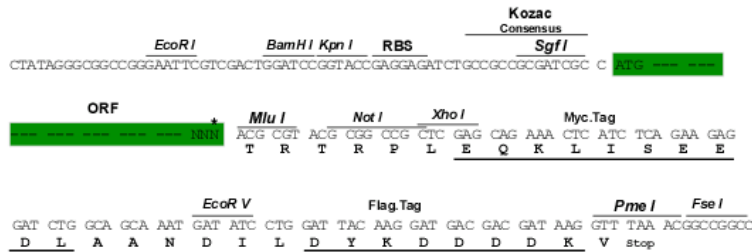
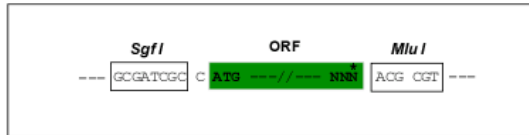
```
MSFESVSSLPEVETDPEPGAQEAFAALEGPSTEEMPSDPEFPEALETQLHAPKGLLGVDNPAAVDFVE
PEGSEDLKPLSSEEEEEEMEAAQEPESLLPPSVLDQASVIAERFASSFRRSSLAIEDGKSSGLGTPRL
ISRSSSVLSLEGSCLKLARWSSIGDSLNPPTPEVIIGADMVTDNGPSVNGTESPSAGSGCPTEQDRSSC
KKKESALSTRDRQLLDKIKNYENAEHHDAGFSIRRRESLSYIPKGLVRSSVSRFNSLPKPDSEPAAPVG
YKRPGSSRPASWTLFDLPGPRTDKGDPAITDAEFRPSSEIAKIWERMESSESRPTGSGQSQANGFELQ
EPLFILEEHGELGAITEESAVASPESASPTQPSAHLARELKELVKELSSSVQGLVTPLHPRIQVLSHV
MDSHVSERVKNKVYQLARQYSLRIKNIKAARPLQWEKVPDQEEQVPSISGLPEEAGELSGGKARRKPV
LSLLSYEQVLAQEHGTSKSSAAVETSPRRFSFSPSAVSPRTTSPGARSSARSPLSPFDTETFNWPDVREL
CSKYTSHDKTAQVESSWPRSLLVNRSRSLPENIVEPPMSGKADRCGLNTHRRLGDGEASQPPLPESPPQ
SQLNGGDALYVTADLTLENNQRVIIMEKGPHSPSTVGLLEDSGKESSPVALKGQGGFQASAEYQPKHE
GPRDSADTNKQGRVNRNLREKFQALNSVG
```

TRTRPLEQKLISEEDLAANDILDYKDDDDKV

**Restriction Sites:** SgfI-MluI

**Cloning Scheme:**

Cloning sites used for ORF Shuttling:



\* The last codon before the Stop codon of the ORF

**ACCN:** BC031136

**ORF Size:** 2184 bp

**OTI Disclaimer:** The molecular sequence of this clone aligns with the gene accession number as a point of reference only. However, individual transcript sequences of the same gene can differ through naturally occurring variations (e.g. polymorphisms), each with its own valid existence. This clone is substantially in agreement with the reference, but a complete review of all prevailing variants is recommended prior to use. [More info](#)

**OTI Annotation:** This clone was engineered to express the complete ORF with an expression tag. Expression varies depending on the nature of the gene.

**Components:** The ORF clone is ion-exchange column purified and shipped in a 2D barcoded Matrix tube containing 10ug of transfection-ready, dried plasmid DNA (reconstitute with 100 ul of water).

- Reconstitution Method:**
1. Centrifuge at 5,000xg for 5min.
  2. Carefully open the tube and add 100ul of sterile water to dissolve the DNA.
  3. Close the tube and incubate for 10 minutes at room temperature.
  4. Briefly vortex the tube and then do a quick spin (less than 5000xg) to concentrate the liquid at the bottom.
  5. Store the suspended plasmid at -20°C. The DNA is stable for at least one year from date of shipping when stored at -20°C.

**RefSeq:** [BC031136.1](#)

**RefSeq Size:** 3001 bp

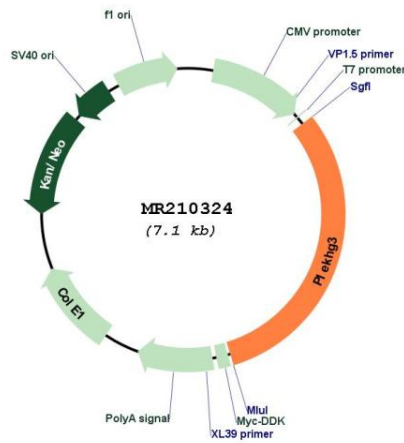
**RefSeq ORF:** 2186 bp

**Locus ID:** 263406

**Cytogenetics:** 12 C3

**MW:** 78.9 kDa

**Product images:**



Circular map for MR210324