

Product datasheet for **MR210300**

Adgre5 (NM_001163031) Mouse Tagged ORF Clone

Product data:

Product Type:	Expression Plasmids
Product Name:	Adgre5 (NM_001163031) Mouse Tagged ORF Clone
Tag:	Myc-DDK
Symbol:	Adgre5
Synonyms:	AA409984; Cd97; TM7LN1
Mammalian Cell Selection:	Neomycin
Vector:	pCMV6-Entry (PS100001)
E. coli Selection:	Kanamycin (25 ug/mL)



[View online »](#)

ORF Nucleotide
Sequence:

>MR210300 ORF sequence
Red=Cloning site Blue=ORF Green=Tags(s)

TTTTGTAATACGACTCACTATAGGGCGGCCGGGAATTCGTCGACTGGATCCGGTACCGAGGAGATCTGCC
GCC**CGGATCGCC**

ATGAGGGGCGTCAGATGCCCGGCTGCTTGTGGTGTGCATTTTACTGAGTCTCTCAGGAGCTGGAACCC
AGAAGGCAGAGAGTAAGAACTGTGCCAAGTGGTGCCCTATCAACTCAAAATGTGTGAGTAAACAGAAGCTG
TGTCTGCAAGCCCGGCTTCAGCTCGGAGAAGGAATTGATCACTAACCCCTGCAGAGAGCTGTGAAGACATC
AACGAGTGTTTACTACCTGGATTTTCTGTGGAGACTTTGCCATGTGTAAGAACTCAGAGGGGAGTTACA
CCTGCGTCTGTAACCTGGGATATAAGCTCCTTTCTGGTGCAGAATCTTTTGTAAACGAGAGTGAGAATAC
ATGTCAAGATGTGGATGAGTGCAGCTCTGGGCAGCATCAATGTCACAATTCACCGTCTGCAAAAACACC
GTAGGCTCCTACAAGTGCCTGCGTCCAGGTTGGAAGCCAACCTCTGGGTCCCTCCGTGGTCCAGACA
CCATATGCCAAGAGCCACCGTCCCTACTTGGACTGCTGCCACAGCCACAGTCAGACTCTCTTGAG
ATTCTCTGTTGAAGTCCAGAATCTGCTCCGTGACTTCAATCCAGCCACGGTCACTACACCATCCAGAAA
CTCATCGAGGCTGTGGACAAGCTGCTGGAAGACCCCATGGAGACTGAAACCCAACAAGTAGCTGCCAGT
TGCTCTCGAACCTGGAACAAAGCCTTCGGACCTTGCTCAGTTTTTACCCAAAGGCCCTTCACCTACAC
GTCCCCTTCAAATACTGAACTGTCCCTGATGGTGAAGGAGCAAGACAACAAAGATGTTACCACAGTGCAC
CACGGCCAAACTTGGATGGAGCTGGACTGGGCTGTGACAGCTGGAGCCAAAATCTCAGAAAATGGCTCCT
CGGTGGCAGGCATCCTGTCCAGCCAAACATGGAAGAGCTGTGGGCAACACCCCGCTGAACTTGGAGCA
GAGAAGGGCCTCCTTGGAGGACTTCTATGGAAGCCGATCCGAGTGTCTCACTTAAGCTTCTCTCAAAC
ATCAATTCTGTCTTCTGACCAACACGAACACTGAAAAGCTCGCCTCGAATGTCACGTTCAAGTTCGACT
TTACTTCTGTGGAGTCAATTGAGCCACGTCATGAGCTGATATGTGCCTTCTGGAAGCCCAACGGGAA
TGGGTACTGGGACACCGACGGCTGCTCAATGAATGGCACTGGCTTCTGCCACTGCAACCACCTGACCAGC
TTTGCCATCCTAATGGCTCAGTACCATGTGACAGACCCAAGGCTGGAATTGATCACCAAGGTGGGGCTGT
TGTGTCCCTGATCTGCCTGCTGCTGTGCATCCTGACCTTCTGCTGGTGAAGCCCATCCAGAGCTCTCG
AACCATGGTGCACCTGCACCTGTGCATCTGCCTTCTCTGGGCTCAATCATATTCTGGTCCGGCTGGAG
AATGAAGGGGGTGAAGTGGGCTGCGCTGCCGCTGGTGGCCGTGATGCTGCATTTCTGCTTCTGGCCG
CCTTCTGCTGGATGGCACTGGAGGGCTGGAGCTCTACTTCTGGTGGTGCCTGTGTTCCAGGGCCAAGG
CCTGAGTACATGGCAACGCTGCCTGATTGGCTACGGGGTGGCCCTCCTCATCGTGCCATCTCAATGGCA
GTTGTCAAATGGATGGCTATGGGCATGCAACATACTGCTGGCTGGACTTAGGAAGCAGGGCTTCTCT
GGAGCTTTTCGGACCCGTGGCCTTCATCATTTTCTGCAATGCTGCCATTTTCGTGATCACTGTCTGGAA
GCTCACAAGAAGTTTTCTGAAATCAACCCAAACATGAAGAAGTTAAGGAAGGCGAGGGTCTGACCATC
ACCTCCATCGCCAGCTCCTTGTGCTGGGCTGCACCTGGGGCTTCGGCCTGTTCTCTTCAACCCCAT
GCACATGGCTATCCTACATCTTACCCTGCTCAACTGCCTGCAGGGCCTATTCTCTATGTGATGCTCTG
CCTGCTCAACAAAAGGTGAGGGAAGAGTACTGAAAATGGGCTGCATGGTCACTGGGAGCAAGTACACA
GAGTTCAACTCTCCACAACAGGCACTGGCACCAGCCAAACACGGGCTCTCAGGTCTCAGAATCAGGGA
TG

ACGCGTACGCGGCCGCTCGAGCAGAACTCATCTCAGAAGAGGATCTGGCAGCAAATGATATCCTGGATT
ACAAGGATGACGACGATAAGGTTTAA

Protein Sequence: >MR210300 protein sequence
Red=Cloning site Green=Tags(s)

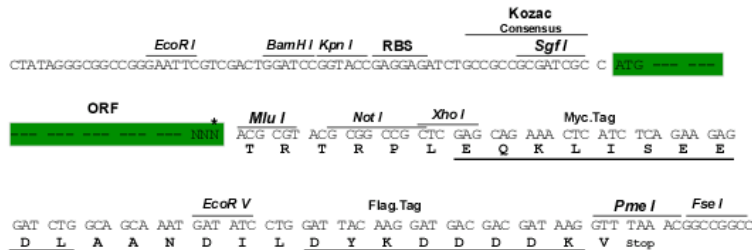
```
MRGVRCPLLVCILLSLSGAGTQKAESKNCACWCPINSKCVSNRSCVCKPGFSSEKELITNPAESCEDI
NECLLPGFSCGDFAMCKNSEGSYTCVCNLGYKLLSGAESFVNESENTCQDVDECSSGQHCHNSTVCKNT
VGSYKCHCRPGWKPTSGSLRGPDTICQEPFPPTWLLPTAHSQTLRLRFSVEVQNLLRDFNPATVNYTIQK
LIEAVDKLLEDPMETETQVAAQLLSNLEQSLRSLAQFLPKGPFYTYTSPSNTLSLMVKEQDNKDVTTVH
HGQTMELDWAVTAGAKISENGSSVAGILSSPNMEKLLGNTPLNLEQRRASLEDFYGSPIPSVSLKLLSN
INSVFLTNTNTEKLASNVTFKDFDTSVESIEPRHELICAFWKAHNGNGYWDTDGCSMNGTGFCHCNHLTS
FAILMAQYHVQDPRELEITKVGLLLSLICLLLCILTFLLVKPIQSSRTMVHLHLCICLFLGSIIFLVGVE
NEGGEVGLRCLVAVMLHFCFLAAFCWMALEGVELYFLVVRVFQGGQLSTWQRCLIGYGVPLLIVASMA
VVKMDGYGHATYCWDFRKQGLWSFSGPVAFIIFCNAEIFVITVWKLTKKFSEINPNMKLKRARVLTIT
TSIAQLLVLGCTWGFGLFLFNPSTWLSYIFTLLNCLQGLFLYVMLCLLNKKVREEYWKWACMVTGSKYT
EFNSSTTGTSQTRALRSSESGM
```

TRTRPLEQKLISEEDLAANDILDYKDDDDKV

Restriction Sites: SgfI-MluI

Cloning Scheme:

Cloning sites used for ORF Shuttling:



* The last codon before the Stop codon of the ORF

ACCN: NM_001163031

ORF Size: 2175 bp

OTI Disclaimer: The molecular sequence of this clone aligns with the gene accession number as a point of reference only. However, individual transcript sequences of the same gene can differ through naturally occurring variations (e.g. polymorphisms), each with its own valid existence. This clone is substantially in agreement with the reference, but a complete review of all prevailing variants is recommended prior to use. [More info](#)

OTI Annotation: This clone was engineered to express the complete ORF with an expression tag. Expression varies depending on the nature of the gene.

Components: The ORF clone is ion-exchange column purified and shipped in a 2D barcoded Matrix tube containing 10ug of transfection-ready, dried plasmid DNA (reconstitute with 100 ul of water).

Reconstitution Method:

1. Centrifuge at 5,000xg for 5min.
2. Carefully open the tube and add 100ul of sterile water to dissolve the DNA.
3. Close the tube and incubate for 10 minutes at room temperature.
4. Briefly vortex the tube and then do a quick spin (less than 5000xg) to concentrate the liquid at the bottom.
5. Store the suspended plasmid at -20°C. The DNA is stable for at least one year from date of shipping when stored at -20°C.

RefSeq: [NM_001163031.1](#), [NP_001156503.1](#)

RefSeq Size: 2965 bp

RefSeq ORF: 2169 bp

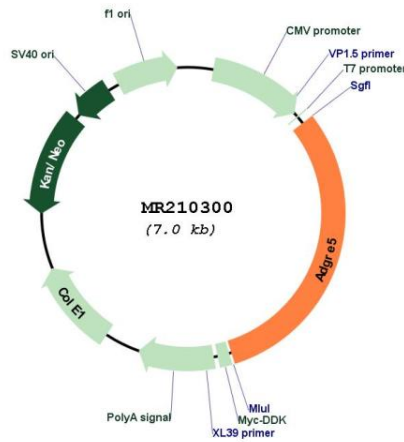
Locus ID: 26364

Cytogenetics: 8 40.22 cM

MW: 80.4 kDa

Gene Summary: Receptor potentially involved in both adhesion and signaling processes early after leukocyte activation. Plays an essential role in leukocyte migration.[UniProtKB/Swiss-Prot Function]

Product images:



Circular map for MR210300