

Product datasheet for **MR210244**

Lrrn1 (NM_008516) Mouse Tagged ORF Clone

Product data:

Product Type:	Expression Plasmids
Product Name:	Lrrn1 (NM_008516) Mouse Tagged ORF Clone
Tag:	Myc-DDK
Symbol:	Lrrn1
Synonyms:	2810047E21Rik; NLRR-1
Mammalian Cell Selection:	Neomycin
Vector:	pCMV6-Entry (PS100001)
E. coli Selection:	Kanamycin (25 ug/mL)



[View online »](#)

ORF Nucleotide Sequence:

>MR210244 representing NM_008516
 Red=Cloning site Blue=ORF Green=Tags(s)

TTTTGTAATACGACTCACTATAGGGCGGCCGGGAATTCGTCGACTGGATCCGGTACCGAGGAGATCTGCC
 GCC**CGGATCGCC**

ATGGCCAGATTGAGCACTGGGAAAGCAGCTTGCCAGGTGGTGTGGGCTTGCTGATAAATTCATTAAGT
 AATCTTCCATACTGACTAGTGAGTGTCCCCAGCTTTGTGTTTGTGAAATTCGTCCTTGGTTTACCCACA
 GTCACCTACAGAGAAGCCACCACCGTGGATTGTAATGACCTCCGCTAACCCAGGATCCCTGGCAACCTC
 TCTAGTGACACACAAGTCTTCTTACAGAGCAATAACATCGCCAAGACCGTGGACGAGCTGCAGCAGC
 TCTTCACTTGACCGAGCTGGATTTCTCCAGAACAATTTACAAACATCAAAGAGGTAGGGCTGGCAAA
 CTTGACCCAGCTCACAACCCTGCATCTAGAGGAAAATCAGATTTTACAGAGATGACGGATTACTGTCTGCAA
 GACCTCAGCAACCTTCAAGAACTCTACATCAACCACAACCAGATCAGCACAATCTCTGCCAACGCCTTTT
 CTGGCTTGAAAAATCTCTTGAGGCTGCACCTGAATCCAATAAGTTGAAAGTGATCGATAGCCGCTGGTT
 TGATTCCACTCCCAACCTGGAAATCTCATGATTGGGGAAAACCTGTGATTGGAATCCTGGACATGAAC
 TTCAGACCTCTCTCAACCTGAGAAGCCTAGTGTTAGCAGGAATGTACCTCACTGATGTTCCCGGAAACG
 CCTTGGTAGGCTTGATAGCCTCGAGAGCTGTCTTTCTATGACAACAACTGATCAAAGTCCCTCAACT
 TGCCCTGCAAAAAGTTCCAAATTTGAAATTTTAGACCTCAATAAAAAATCCTATTCACAAAATCCAAGAA
 GGAGACTTTAAAAATATGCTTCGGTTAAAAGAAGTGGGAATCAACAACATGGGAGAGCTGGTTTCCGTGG
 ACCGCTATGCCCTGGATAAATGGCCAGAATTGACAAAGCTCGAAGCAACCAATAACCCCAAACTGTCATA
 CATCCACCGTTTGGCTTCCGTAGTGTGCCGGCTCTAGAAAGCTTAATGTTGAACAACAATGCCTTGAAT
 GCCGTGTACAAAAAACAGTGAATCTCTTCCCAATCTGCGTGAGATCAGCATCCACAGCAACCCGCTGA
 GGTGTGACTGTGCATCCACTGGATCACTCAACAAAACCAACATTTCGTTTCATGGACCCCTCTCCAT
 GTTCTGTGCCATGCCACCGGAATACAGGGGCGCAGCAGGTGAAGGAGGTCCCTAATCCAGGACTCAAGTGAG
 CAGTGCCTCCCGATGATATCGCACGATACATTCCTAATCATCTAAACATGGACATTGGTACAACACTTT
 TCCTAGACTGTCGGGCCATGGCTGAGCCAGAACCAGAGATTTACTGGTCACTCCCATTTGAAAATAAGAT
 AACCGTGGAAACTCTTTCAGACAAATACAAGCTGAGTAGTGAGGGCACCTTGGAGATAGCAACATACAG
 ATTGAAGACTCAGGAAGGTACACCTGCGTTGCCAGAAATGTCCAAGGAGCAGACTCGAGTGGCAACTA
 TCAAGGTTAATGGAACCTTCTAGATGGTGCACAGGTGCTGAAAATATATGTCAAACAGACAGAATCTCA
 TTCGATTTTAGTATCTTGAAAGTTAATCCAATGTCATGACATCGAATTGAAATGGTCACTGCCACT
 ATGAAGATCGACAACCCACATAACATACACAGCCAGGTGCCAGTAGATGTTTCAATGAATATAACCTAA
 CACATCTGACGCTTCTACGGATTATGAAGTGTGTCTCACGGTGTCCAACATCCATCAGCAGACTCAGAA
 GTCATGTGTCAATGTCACAACAAAACCGCTGCCTTCGCCCTGGACATCTCTGACCATGAAACCAGCACC
 GCCCTTGTGCGGTGATGGGGTCCATGTTTCCGCTCATCAGTCTAGCATCCATCGCTATTTACATCGCGA
 AAAGGTTAAGAGGAAAAATTACCACCATTGCTGAAAAAGTATATGCAAAAACCTCGTCCATCCCACT
 GAACGAGCTGTACCCCACTCATTAACTCTGGGAAGCTGACAGTGACAAGGACAAGATGGCTCGGCA
 GACACCAAGCCAACCCAGGTTGACACATCCAGAAGCTATTACATGTGG

ACGCGTACGCGGCCGCTCGAGCAGAACTCATCTCAGAAGAGGATCTGGCAGCAAATGATATCCTGGATT
 ACAAGGATGACGACGATAAGGTTTAA

Protein Sequence: >MR210244 representing NM_008516
 Red=Cloning site Green=Tags(s)

MARLSTGKAACQVVLGLLITSLTESSILTSECPQLCVCEIRPWFTPQSTYREATTVDCNDLRLTRIPGNL
 SSQTQVLLQLSNNIAKTVDLQQLFNLTELDQSNNFTNIKEVGLANLTQLTTLHLEENQISEM TDYCLQ
 DLSNLQELYINHNQISTISANAFSGLKNLLRLHLNSNKLKVIDSRWFDSTPNLEILMIGENPVIGILDMN
 FRPLSNLRSVLVLAGMYLTDVPGNALVGLDSLESLSFYDNKLIKVPQLALQKVPNLKFLDLNKNPIHKIQE
 GDFKNMLRLKELGINMGELVSVDRYALDNLPELTKLEATNPNKLSYIHRLAFRSVPALLESMLNNNALN
 AVYQKTVESLPNLRREISIHSNPLRCDCVIHWINSNKTNIRFMEPLSMFCAMPPEYRGQQVKEVLIQDSSE
 QCLPMISHDTFPNHLNMDIGTTLFLDCRAMAEPEPEIYVWTPIGNKITVETLSDKYKLSSEGTEIANIQ
 IEDSGRYTCVAQNVQGADTRVATIKVNGTLLDGAQVLKIYVKQTESHSILVSWKVSNNVMTSNLKWSSAT
 MKIDNPHITYTARVPVDVHEYNLTHLQPSTDYEVCLTVSNIHQQTQKSCVNVTTKTAALFDISDHETST
 ALAAMVMSMFAVISLASIAIYIAKRFRKKNYHSLKMYMQKTSSIPLNELYPPLINLWEADSDKDKDGSA
 DTKPTQVDTSRSYMW

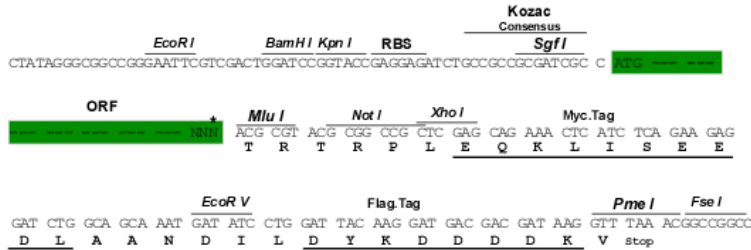
TRTRPLEQKLISEEDLAANDILDYKDDDDKV

Chromatograms: https://cdn.origene.com/chromatograms/mm9013_f06.zip

Restriction Sites: SgfI-MluI

Cloning Scheme:

Cloning sites used for ORF Shuttling:



* The last codon before the Stop codon of the ORF

ACCN: NM_008516

ORF Size: 2148 bp

OTI Disclaimer: Due to the inherent nature of this plasmid, standard methods to replicate additional amounts of DNA in E. coli are highly likely to result in mutations and/or rearrangements. Therefore, OriGene does not guarantee the capability to replicate this plasmid DNA. Additional amounts of DNA can be purchased from OriGene with batch-specific, full-sequence verification at a reduced cost. Please contact our customer care team at custsupport@origene.com or by calling 301.340.3188 option 3 for pricing and delivery.

The molecular sequence of this clone aligns with the gene accession number as a point of reference only. However, individual transcript sequences of the same gene can differ through naturally occurring variations (e.g. polymorphisms), each with its own valid existence. This clone is substantially in agreement with the reference, but a complete review of all prevailing variants is recommended prior to use. [More info](#)

OTI Annotation: This clone was engineered to express the complete ORF with an expression tag. Expression varies depending on the nature of the gene.

Components: The ORF clone is ion-exchange column purified and shipped in a 2D barcoded Matrix tube containing 10ug of transfection-ready, dried plasmid DNA (reconstitute with 100 ul of water).

Reconstitution Method:

1. Centrifuge at 5,000xg for 5min.
2. Carefully open the tube and add 100ul of sterile water to dissolve the DNA.
3. Close the tube and incubate for 10 minutes at room temperature.
4. Briefly vortex the tube and then do a quick spin (less than 5000xg) to concentrate the liquid at the bottom.
5. Store the suspended plasmid at -20°C. The DNA is stable for at least one year from date of shipping when stored at -20°C.

RefSeq: [NM_008516.4](#), [NP_032542.1](#)

RefSeq Size: 3756 bp

RefSeq ORF: 2151 bp

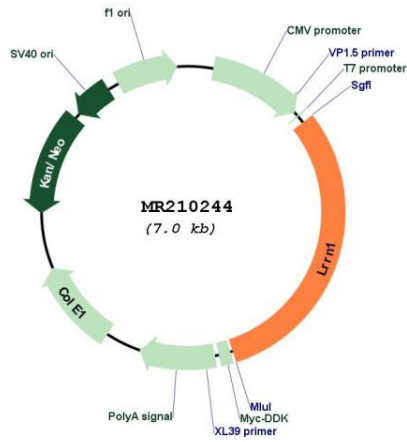
Locus ID: 16979

UniProt ID: [Q61809](#)

Cytogenetics: 6 E1

MW: 81 kDa

Product images:



Circular map for MR210244