

Product datasheet for **MR210217**

Tagap (NM_145968) Mouse Tagged ORF Clone

Product data:

Product Type:	Expression Plasmids
Product Name:	Tagap (NM_145968) Mouse Tagged ORF Clone
Tag:	Myc-DDK
Symbol:	Tagap
Synonyms:	2610315E15Rik
Mammalian Cell Selection:	Neomycin
Vector:	pCMV6-Entry (PS100001)
E. coli Selection:	Kanamycin (25 ug/mL)



[View online »](#)

ORF Nucleotide
Sequence:

>MR210217 representing NM_145968
 Red=Cloning site Blue=ORF Green=Tags(s)

TTTTGTAATACGACTCACTATAGGGCGGCCGGGAATTCGTCGACTGGATCCGGTACCGAGGAGATCTGCC
 GCC**CGGATCGCC**

ATGAAGCTGATAAGCAGTCTCGATGGTTCAAAAACACTTAATGCTAACACATGGAGACATTAATTGAAT
 GTCAGTCAGAGGGTGATATCAAAGTGCCTCCCCTGCTGACATCATGTGAGAGTGAAGACAGCATTGGCCA
 GCTAACTGAAATTAAGAAGAGAAAAGAAAGTGTGTCTGCTGATCTCTCATGAGAAAGCTCTCTCCTTCA
 TCCGACTTCTCTGGGTCAATTGGAACAGAGCTGAAAGTGTGCTGTTTGACCAACCCCTGTGATCATCT
 GTGGGGAGAACGACACACTTCCCAGACCATCCAGGACATCCTCACCATCCTCTGCCTTAAAGGTCTTTC
 AACGGAAGGGATATTCAGGAAAGCTGCCAGCGAGAAAGCCCGCAAGGAGCTGAAGGAGGGGCTTAACTGT
 GGGGTCTCCGTGAATCTGAAGCAGCTCCCTGTGCACCTCCTAGCTGTGGTCTTCAAGGACTTCTCCGAG
 GGATACCCCTGAAGCTACTCTCCTGTGATCTCTTTGAGGACTGGATGGGCGCCCTGGAGAAGCCCACCGA
 GGAGGACAGAATCGAGGCCCTGAAGCAGTTGCTGGTGGCTCCCCGGCCCAACCTTCTCTGCTCAGG
 CACTTGCTCTACGTGCTCCACCTCATCAGCAAGAACGCTGAGGTCAACAAGATGGACTCCAGCAACCTCG
 CCATCTGCATCGGGCCTAACATGCTCACTCTGAAGAACGACCAGAGCCTGTCTTCCAGGCCCAGAAAGGA
 CCTGAACAATAAGGTTAAGATCTTGGTGAATTCTCATCGACAACCTGCTTTGAGATATTTGGGGAGAAC
 ATTCGGACGCGTTCGCCATCACTTCTGACGACTCCCTGGAACACACTGACAGTTCAGACGTGCAACTC
 TGCAGAATGACTCGGCCATGACAGCAATGACCCAGATGTGGAGCCCACAAGTGGCGCAGCCTCTCCCAA
 CAGGCAACTGGAGGGTCCCCTCCCACAATGGCTGGTCTGGATACCCGGGGCCACCGGACACCTGTGAG
 TCAAGCTCAGAGTCCAGCGTTAGCATGGTAGTCAGGCTGAAAAGCTCCATTGTCCAACAAGACAGGCGGT
 TCTCTGAACCCAAACATGTCACCCTCACGAGAGTGCCTCGTGGGCCCAACATCCAAGCAAAAAGCTAGCAAG
 GAGTGAGGACAGCTTCACTCTGTCCCAGGACGCTCCTGTTCTGAAGGCGATGAAGCTGAAGATCCCTTT
 ACAGAGGAAGTCTTCCCAGCAGTGGACAGCAAACCCAAGAGACCTGTGGATTTGAAAATAAAGAATTGGA
 CCCAAGGTTTAGCATCTCCACAGGGACACATAACCAAAGCTTTCTCCAGATCCTCCCCAGGCGAATCTTT
 GGGCAGCTCACCTGTGCCTTCTCCATCCTGCCCAAGAGAAACTTCTTACCAGACACCAGAGTTTACACA
 ACAAGAGACAGACAAAACCAAACCCAGAGAGAAATTAGAAAGCACTCCATGTCGTTTTCTTTGCGTCTC
 ACAAGAAAGTGTGCCCCGAACCTCCAGCATTGGGTCTGAGAAATCCAAGACTTTTCTAGAGACCAACT
 CCAGAAGGACTTGAGGAAAGAGAGCCAACCTTTCTGGCAGAATCGTCCAGGAAAATGAGTCAGAAATCCAA
 AGCCAAACATCTCTGGGCTTTCAGCTTGTCTGGCACCTGGGCCCTCTCAGTCGACAACACGTTCCAGTTAG
 TGGATATGAGGAAACCAGGAAGCCACCATCTTACGAAGAGGCCATTTATTACCAGACATCAGGACTCAC
 AGCCTACGGTGGCCAGACAGTGGGAGTATGAGGTCAAGAATGTTCAAGCCAAGCACAGCAGTGCCTCCT
 GTGCCTTCTCACCATGGAGGTGACCTCAGTGAAGGGACACCTGGTGGACACAGATTGTCTTCTGTGACTG
 AGCACTGGACACACAGTCAGACTGTCCATGTCTCTATAGAAACTCAGGGGAGATCTGAGTACACCAGTT
 GAGGACAGTGTCCGAGTCCATGCAGAAGGCTAAGCTGGACTGTCTTGGGCCACAACACAGCCACTTAGTC
 TTTGAGGCTGACCAACTGTCTGTGCTAGAGAATCCTACATT

AG**CGGACCG**ACGCGTACGCGGCCGCTCGAGCAGAAACTCATCTCAGAAGAGGATCTGGCAGCAAATGATATCC
 TGGATTACAAGGATGACGACGATAAGGTTTAA

Protein Sequence: >MR210217 representing NM_145968
 Red=Cloning site Green=Tags(s)

MKLISSLDGSKTLNANNMETLIECQSEGDIKVPPLLTSCSEDSICQLTEIKRKKVLSWPSLMRKLSPS
 SDFSGSLEPELKVSLFDQPLSIIICGENDLPRPIQDILTILCLKGPSTEGIFRKAASEKARKELKEGLNC
 GVSYNLKLQLPVHLLAVVFKDFLRGIPLKLLSCDLFEDWMGALEKPTTEEDRIEALKQVAGGLPRPNLLLLR
 HLLYVLHLISKNAEVNKMDSSNLAICIGPNMLTLKNDQSLSFQAQKDLNKNVKILVEFLIDNCFEIFGEN
 IRTRSRI TSDDSL EHTDSSDVSTLQND SAYDSNDPDVEPTSGAASPNRQLEGPPTMAGLDTRGQRDICE
 SSES SVSMVVR LKSSIVQQDRRFSEPNMSPSRECLVGPTSKQKLARSEDSFTLSQDASCSEGEAEDPF
 TEEVFP AVDSKPKRPV DLKIKNWTQGLASPQGHITKAFSRSSPGESLGSSPVPSPCPKRNFFTRHQSFT
 TKDTKTPQREIRKHSMSFSFASHKVLPR TSSIGSEKSKDFSRDQLQKDLRKESQLSGRIVQENESEIQ
 SQTSLGFSLSGTWALSV DNTFQLVDMRKPGSPSYEEAIYYQTSGLTAYGGQTVGSMRSMFKPSTAVPP
 VPSHHGGDLSEGTPGGHRLSSVTEHWTHSQTVHVS IETQGRSELHQLRTVSESMQKAKLDCLGPQSHSLV
 FEADQLCCARES YI

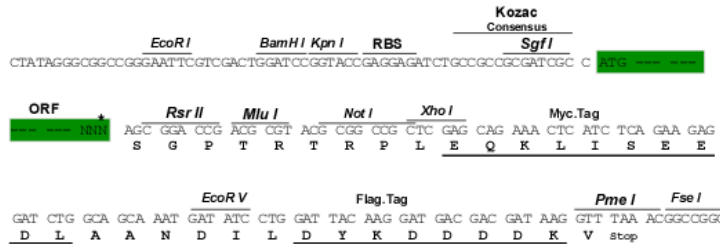
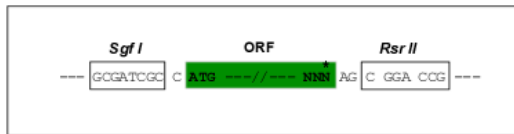
SGP TRTRPLEQKLI SEEDLAANDILDYKDDDDKV

Chromatograms: https://cdn.origene.com/chromatograms/mm9096_d01.zip

Restriction Sites: SgfI-RsrII

Cloning Scheme:

Cloning sites used for ORF Shutting:



* The last codon before the Stop codon of the ORF

ACCN: NM_145968

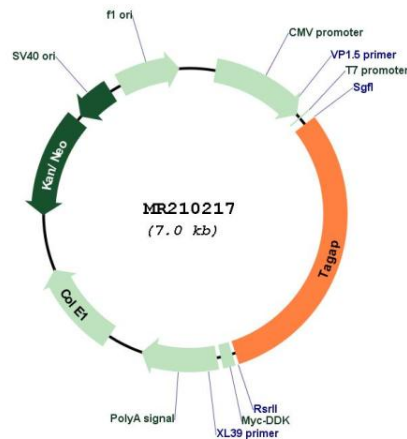
ORF Size: 2142 bp

OTI Disclaimer: The molecular sequence of this clone aligns with the gene accession number as a point of reference only. However, individual transcript sequences of the same gene can differ through naturally occurring variations (e.g. polymorphisms), each with its own valid existence. This clone is substantially in agreement with the reference, but a complete review of all prevailing variants is recommended prior to use. [More info](#)

OTI Annotation: This clone was engineered to express the complete ORF with an expression tag. Expression varies depending on the nature of the gene.

Components:	The ORF clone is ion-exchange column purified and shipped in a 2D barcoded Matrix tube containing 10ug of transfection-ready, dried plasmid DNA (reconstitute with 100 ul of water).
Reconstitution Method:	<ol style="list-style-type: none">1. Centrifuge at 5,000xg for 5min.2. Carefully open the tube and add 100ul of sterile water to dissolve the DNA.3. Close the tube and incubate for 10 minutes at room temperature.4. Briefly vortex the tube and then do a quick spin (less than 5000xg) to concentrate the liquid at the bottom.5. Store the suspended plasmid at -20°C. The DNA is stable for at least one year from date of shipping when stored at -20°C.
RefSeq:	NM_145968.2 , NP_666080.1
RefSeq Size:	3076 bp
RefSeq ORF:	2145 bp
Locus ID:	72536
UniProt ID:	B2RWW0
Cytogenetics:	17 A1
MW:	78.9 kDa
Gene Summary:	May function as a GTPase-activating protein. May play a role in transmission ratio distortion (TRD) in mouse, in which heterozygous males for t-locus transmit their t-carrying chromosome to 95% or more of their offspring.[UniProtKB/Swiss-Prot Function]

Product images:



Circular map for MR210217