

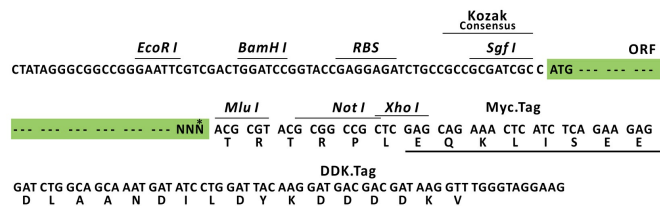
Product datasheet for MR210212L3

Zp2 (NM_011775) Mouse Tagged Lenti ORF Clone

Product data:

Product Type:	Expression Plasmids
Product Name:	Zp2 (NM_011775) Mouse Tagged Lenti ORF Clone
Tag:	Myc-DDK
Symbol:	Zp2
Synonyms:	Zp-; Zp-2
Mammalian Cell Selection:	Puromycin
Vector:	pLenti-C-Myc-DDK-P2A-Puro (PS100092)
E. coli Selection:	Chloramphenicol (34 ug/mL)
ORF Nucleotide Sequence:	The ORF insert of this clone is exactly the same as(MR210212).
Restriction Sites:	SgfI-MluI
Cloning Scheme:	

Cloning sites used for ORF Shuttling:



* The last codon before the Stop codon of the ORF.

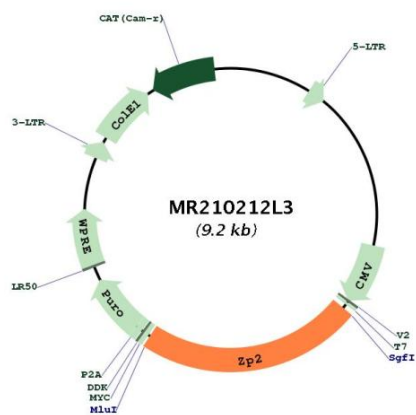
ACCN:	NM_011775
ORF Size:	2139 bp



[View online >](#)

OTI Disclaimer:	The molecular sequence of this clone aligns with the gene accession number as a point of reference only. However, individual transcript sequences of the same gene can differ through naturally occurring variations (e.g. polymorphisms), each with its own valid existence. This clone is substantially in agreement with the reference, but a complete review of all prevailing variants is recommended prior to use. More info
OTI Annotation:	This clone was engineered to express the complete ORF with an expression tag. Expression varies depending on the nature of the gene.
Components:	The ORF clone is ion-exchange column purified and shipped in a 2D barcoded Matrix tube containing 10ug of transfection-ready, dried plasmid DNA (reconstitute with 100 ul of water).
Reconstitution Method:	<ol style="list-style-type: none">1. Centrifuge at 5,000xg for 5min.2. Carefully open the tube and add 100ul of sterile water to dissolve the DNA.3. Close the tube and incubate for 10 minutes at room temperature.4. Briefly vortex the tube and then do a quick spin (less than 5000xg) to concentrate the liquid at the bottom.5. Store the suspended plasmid at -20°C. The DNA is stable for at least one year from date of shipping when stored at -20°C.
RefSeq:	NM_011775.6
RefSeq Size:	2200 bp
RefSeq ORF:	2142 bp
Locus ID:	22787
UniProt ID:	P20239
Cytogenetics:	7 64.38 cM
Gene Summary:	This gene encodes a member of the zona pellucida family of glycoproteins that play an important role in the survival of growing oocytes, successful fertilization and the passage of early embryos through the oviduct. The encoded preproprotein undergoes proteolytic processing to generate the mature polypeptide that is incorporated into the extracellular matrix surrounding mouse oocytes. Mice lacking the encoded protein develop defective zonae pellucidae that disrupt folliculogenesis, fertility and development. [provided by RefSeq, Sep 2016]

Product images:



Circular map for MR210212L3