

Product datasheet for **MR210208**

Arnt2 (NM_007488) Mouse Tagged ORF Clone

Product data:

Product Type:	Expression Plasmids
Product Name:	Arnt2 (NM_007488) Mouse Tagged ORF Clone
Tag:	Myc-DDK
Symbol:	Arnt2
Synonyms:	bHLHe1; Hif-2b; mKIAA0307
Mammalian Cell Selection:	Neomycin
Vector:	pCMV6-Entry (PS100001)
E. coli Selection:	Kanamycin (25 ug/mL)



[View online »](#)

**ORF Nucleotide
Sequence:**

>MR210208 ORF sequence
 Red=Cloning site Blue=ORF Green=Tags(s)

TTTTGTAATACGACTCACTATAGGGCGGCCGGAATTCGTCGACTGGATCCGGTACCGAGGAGATCTGCC
 GCC**CGGATCGCC**

ATGGCAACCCCGGCCCGTCAACCCTCCGGAGATGGCGTCAGACATACCAGGATCTGTGGCCTTGCTG
 TTGCCCCATGGCAGCCACCGGACAGGTGAGAATGGCAGGGGCCATGCCTGCCCGAGGAGAAAGCGTCG
 ATCCGGAATGGACTTCGATGACGAAGATGGTGAAGGTCCCAAGTAAATCTCAAGAGAGAACCACAGTGAG
 ATTGAGCGGCGCAGGCGGAACAAGATGACTCAATATATTACGGAACCTCCGACATGGTCCACCTGCA
 GTGCACCTGGTAGGAAGCCAGACAAGCTGACCATCCTGCGCATGGCGGTCTCGCACATGAAGTCCATGAG
 GGGCACCGGCAACAAATCGACTGACGGCGCTACAAGCCTTCCTTCTCACTGAGCAGGAACTGAAGCAT
 CTCATCCTGGAAGCCGCTGATGGATTTCTGTTTGGTGGCAGCTGAGACAGGGAGATCATCTACGTGT
 CTGATTCGGTCACTCCTGCTGAACCAGCCACAGTCAGAGTGGTTTGGGAGCACGCTTTATGAGCAGGT
 GCACCCTGATGAGTGGAGAACTGAGGGAACAGCTGTGCACTTCGAAAACTCCATGACAGGCCGCATC
 CTGGACCTGAAGACTGGGACAGTGAAGAAGGAGGGACAGCAGTCATCCATGCGCATGTGTATGGGCTCTC
 GGCCTCCTTATCTGTAGGATGAGGTGTGAAACCGCTCCCTTGACCACCTGCCTTTGAACAGAATAAC
 CACCATGAGGAAAAGGTTCAAGGATGGCCTTGCCCTGTGAAAGAAGGAGAAGCCAGTATGCTGTGGTC
 CACTGCACAGGTTACATCAAGGCTTGCCACCAGCAGGAATGACCATACCCGAAGAAGACGCTGATGTGC
 GACAAGGCAGTAAATATTGCCTCGTGGCAATTGGGAGGCTCCAGGTGACCAGCTCTCCTGTGTGCATGGA
 CATGAGCGGCATGTCAGTGCCACAGAGTTCCTGTACGGCACAACCTCTGATGGGATTATCACGTTTGTG
 GACCCAGATGCATCAGTGTGATTGGCTACCAGCCCCAGGACCTTCTGGGAAAGGATATTTTGAATTTT
 GCCACCCTGAGGATCAGAGCCACCTACGGGAGAGCTTCCAACAGGTGGTTAAGCTGAAGGGCCAAGTGCT
 GTCGGTCAATGATCGGTTCCGCACCAAGAACCGGGAGTGGCTGTTGATCCGTACCAGCAGCTTACCTTC
 CAGAACCCTACTCTGATGAGATCGAGTACGTACCTGCACCAACACCAATGTAAGCAACTTCAGCAAC
 AGCAGGCAGAACTGGAGGTACATCAGCGAGATGGGCTGTGTCATATGACTTATCTCAGGTCCCAGTACC
 CAACCTACCCGCTGGTGTTCACGAGGCCGGGAAGTCTGTGAAAAAGGCAGATGCAATCTTCTCCCAAGAG
 AGAGACCCTCGTTTTGCTGAGATGTTTGCAGGCATCAGTGCATCTGAGAAGAAGATGATGAGCTCAGCCT
 CAGCATCAGGCAGCCAGCAGATCTACTCCAAGGAAGTCCATTCCTGCCGGGCACTCGGCAAGGCCTT
 CAGCTTCCGTGGTCCATGTGCCTGGAGTGAATGACATTCAGTCTCCTCCTCAACGGGACAGAACATA
 TCCAGATCTCTCGGCAGCTGAACCAGGCCAGGTGGCATGGACAGGCAGCCGTCCACCGTTCACAGGGC
 AGCCCAGCAAGACGCAGTCATCTGCCTTCGGAATTGGATCAAGCCACCCTTACCCGGCTGACCCTTCATC
 CTACAGTCTCTCCAGCCAGCTGCCTCCTCAACAAGTGGAAACGCATACCCAGTCTTGCCAACAGG
 ACTCCAGGTTTGTGAGAGTGGACAGAGTGGCGGGCAGTTCAGGGCCGGCCCTCGGAGGTCTGGTCCC
 AGTGGCAGAGCCAGCATCACGGACAGCAGAGCGGTGAGCAGCACTCGCATCAGCAGCCTGGCCAGACTGA
 AGTGTTCAGGACATGCTACCCATGCCGGGCGACCCGACGCAGGGGACTGGCAACTATAACATCGAGGAC
 TTTGCTGACCTGGGCATGTTCCCTCCATTTTCTGAG

ACGCGTACGCGGCCGCTCGAGCAGAACTCATCTCAGAAGAGGATCTGGCAGCAAATGATATCCTGGATT
 ACAAGGATGACGACGATAAGGTTTAA

Protein Sequence: >MR210208 protein sequence
 Red=Cloning site Green=Tags(s)

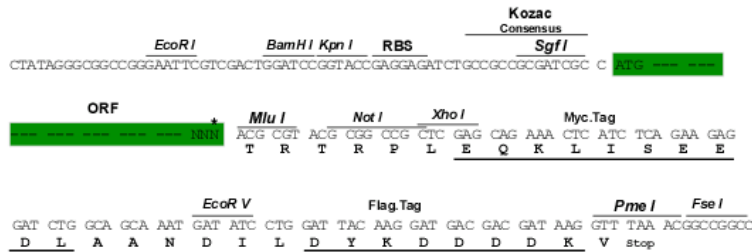
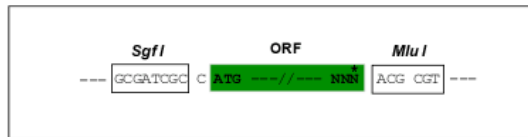
MATPAAVNPPEMASDIPGSVALPVAPMAATGQVRMAGAMPARGGKRRSGMDFDDEDGEGPSKFSRENHSE
 IERRRRNKMTQYITELSDMVPTCSALARKPKDLTILRMAVSHMKSMRGTGNKSTDGAYKPSFLTEQELKH
 LILEAADGFLFVVAEETGRVIYVSDSVTPVLNQPQSEWFGSTLYEQVHPDDVEKLRQLCTSENSMTGRI
 LDCLKTGTVKKEGQQSSMRMCMGSRRSFICRMRCGNAPLDHLPLNRITTMKRFRNGLGPVKEGEAQYAVV
 HCTGYIKAWPPAGMTIPEEDADVGGQSKYCLVAIGRLQVTSSPVCMDMSGMSVPTFLSRHNSDGIITFV
 DPRCISVIGYQPQDLLGKDILEFCHPEDQSHLRESFQQVVKLKGQVLSVMYRFRTKNREWLLIRTSSFTF
 QNPYSDEIEYVTCNTNVKQLQQQAELEVHQRDGLSSYDLSQVPVNPAPAGVHEAGKSVEKADAIQSFE
 RDRPFAEMFAGISASEKMMSSASASGSQQIYSQGSFPAGHSGKAFSSSVVHVPGVNDIQSSSSTGQNI
 SQISRQLNQGQVAWTGSRPPFPQPQSKTQSSAFGIGSSHPYPADPSSYSPLSSPAASSPSGNAYPSLANR
 TPGFAESGQSGGFQGRPSEVWSQWQSQHHGQSQSGEQHSHQPGQTEVFQDMLPMPGDPTQGTGNYNIED
 FADLGMFPPFSE

TRTRPLEQKLISEEDLAANDILDYKDDDDKV

Restriction Sites: SgfI-MluI

Cloning Scheme:

Cloning sites used for ORF Shuttling:



* The last codon before the Stop codon of the ORF

ACCN: NM_007488

ORF Size: 2139 bp

OTI Disclaimer: The molecular sequence of this clone aligns with the gene accession number as a point of reference only. However, individual transcript sequences of the same gene can differ through naturally occurring variations (e.g. polymorphisms), each with its own valid existence. This clone is substantially in agreement with the reference, but a complete review of all prevailing variants is recommended prior to use. [More info](#)

OTI Annotation: This clone was engineered to express the complete ORF with an expression tag. Expression varies depending on the nature of the gene.

Components: The ORF clone is ion-exchange column purified and shipped in a 2D barcoded Matrix tube containing 10ug of transfection-ready, dried plasmid DNA (reconstitute with 100 ul of water).

Reconstitution Method:

1. Centrifuge at 5,000xg for 5min.
2. Carefully open the tube and add 100ul of sterile water to dissolve the DNA.
3. Close the tube and incubate for 10 minutes at room temperature.
4. Briefly vortex the tube and then do a quick spin (less than 5000xg) to concentrate the liquid at the bottom.
5. Store the suspended plasmid at -20°C. The DNA is stable for at least one year from date of shipping when stored at -20°C.

RefSeq: [NM_007488.2](#), [NP_031514.2](#)

RefSeq Size: 6073 bp

RefSeq ORF: 2139 bp

Locus ID: 11864

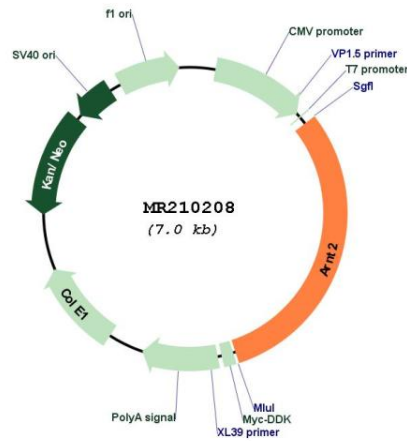
UniProt ID: [Q61324](#)

Cytogenetics: 7 48.35 cM

MW: 77.9 kDa

Gene Summary: Transcription factor that plays a role in the development of the hypothalamo-pituitary axis, postnatal brain growth, and visual and renal function. Specifically recognizes the xenobiotic response element (XRE).[UniProtKB/Swiss-Prot Function]

Product images:



Circular map for MR210208