

## Product datasheet for **MR210196**

### **Rbak (BC059913) Mouse Tagged ORF Clone**

#### **Product data:**

Product Type:	Expression Plasmids
Product Name:	Rbak (BC059913) Mouse Tagged ORF Clone
Tag:	Myc-DDK
Symbol:	Rbak
Mammalian Cell Selection:	Neomycin
Vector:	pCMV6-Entry (PS100001)
E. coli Selection:	Kanamycin (25 ug/mL)



[View online »](#)

**ORF Nucleotide Sequence:**

>MR210196 representing BC059913  
 Red=Cloning site Blue=ORF Green=Tags(s)

TTTTGTAATACGACTCACTATAGGGCGGCCGGAATTCGTCGACTGGATCCGGTACCGAGGAGATCTGCC  
 GCC**CGGATCGCC**

ATGTCGTTGCAGGGCCACTGTCAATCAAGGATGTGGCTGTGGCCTTCTCCAGGAGGAGTGGCAGCAGC  
 TGGACCTGAGGAGAGGACCACATACAGGGATGTGATGCTGGAGACCTACAGCAACCTCGTCTCCGTGGG  
 GTATGACGTTACCAAGCCAAACATGATTATTAAGTTGGAGCAGGGAGAAGAGCCCTGGACAGTGGAGGT  
 GACCGCCATGCTCAGAGGCATTTGGAAATCAGTAAAGTTTATGACCCAGAGAAGGAATTGAGGAAATG  
 GCGAGAAACATCTGCAGTGCATGATGATCCCTACTGCTGGAGAGCTGAGAAGGGGGCTGCTTTTGTGA  
 AGCCTACACCCTCGAAACAGCCCTCATTTCCCCAGCTCAGGTGCTCACAGCTGTGTCTCTGTGGGGAG  
 ACCCTGGAGTCTGTTTCAGAACTGATTAGCAGTGACGGAAGCTATGCACTGGAGAAGCCAGCATGTGTT  
 TTGAGTGTGGAAAGCATACGGAGAAAGCCTTGAAGACTTCAACCAAGATGAGGGTAACTCTCTCAACA  
 CGATGAAAATATTTTGCAGAAAGTCACCATTTTGGAGAAACCCTTTGCTTATGAGTGCATGGAAGCCTTA  
 GACAGTAAAAGTGTTCATGGCTCGTGAGAGAGCTTACATGGGGGAGAAGCCCTATGACTGGGGAGACT  
 CTGGACCAGACTTCATCCAGATGTCGGACTTCAGTACATATCCGAGATCAAAATGGAAGTGAAGCCCTT  
 CGAATGTACACAGTGTGGGAAGTCTTCTGTAAGAAGTCCAAATTCATCATCCACCAGAGAGCTCACACA  
 GGAGAGAAGCCGTACGCTTGTAGTGTGTGTGGAAAGTCTTCAGTCAAAAGGGAACCCCTCACTGTACATC  
 GGAGATCGCACTTAGAGGAGAAGCCCTATAAGTGTAAAGTGTGGGAAGACCTTTTGTGAGAAGTTACA  
 CCTCACACAGCACCAGAGGACTCACTCAGGAGAGAAGCCCTATGAATGTAGCGAGTGCAGGAAAGTCTTC  
 TGCCAGAAGACACACCTCACTCTCCACCAGAGGAATCACTCAGGCGAGAGGCCCTACCCGTGTAATGAAT  
 TAAGTGTAAAGTGTGGGAAATCCTACTACCGGAAGTCCACCCTCATTACACACCAGAGGACACACACA  
 GGGGAGAAGCCCTATCAGTGTAGTGTGGGAAATTTCTCTCGGGTGTCTGACCTACCATACACT  
 ATCGGAGCCATTTAGAAGAGAAACCTTACGAGTGTACAGAATGTGGGAAAACCTTCAATCTAAACTCTGC  
 TTTTATTAGGCACTGGAAGGTCCATGCAGAAGAGAGAGTCCAGGAGTGTGGCGAGTGTGGGAAGCCATCC  
 CCGCTGCAGTGTGCCCTGATCACACAGGCGACCTAGGAGAGAAGCGCTATGAGTGTAAAGTGTGGAA  
 AGACCTTCTTGACAGCTCGGCCTTCCATAGGCACCAGTCCGTCCTGAAGGGGAGAAAACCTTACGAGTG  
 TAATATATGCGGAAAGTCTTCTCGGATTCGTCATGCTACACTGTGCACTACAGAGGTCAATCCGAAGAG  
 AAGCCCTTCGGGTGCAGTGAATGTGGGAAGACCTTCTCTATAACTCATCCCTTTCAGACATCAAAGGG  
 TCCACACCGGCGAGAAGCCGTACGAGTGTACGAATGTGGGAAGTCTTCTCTCAGAAGTGTATCTCAC  
 TATCCATCACCGGATCCATTCGGGAGAGAAGCCCTACGAGTGCAGCAAGTGTGGGAAAGTGTCTCGCGG  
 ATGTGCAACCTCACCGTACACTACCGAAGCCATTCAGGAGAGAAGCCGTATGAGTGCACAGAGTGTGGGA  
 AAGTCTTTTCTCAGAAGTGTACCTCACCGTGCATTACCGGACTCATTACGAGAGAAAACCTTATGAATG  
 TAACGAATGTGGGAAAAAATTCACCACAGATCAGCCTTCAATAGCCATCAGAGAATTCATAAAAGAGGC  
 ACTGTAATGTACTCACTGTAGAAAAGCTC

**ACGCGT**ACGCGGCCGCTCGAGCAGAAACTCATCTCAGAAGAGGATCTGGCAGCAAATGATATCCTGGATT  
 ACAAGGATGACGACGATAAGGTTTAA

**Protein Sequence:** >MR210196 representing BC059913  
 Red=Cloning site Green=Tags(s)

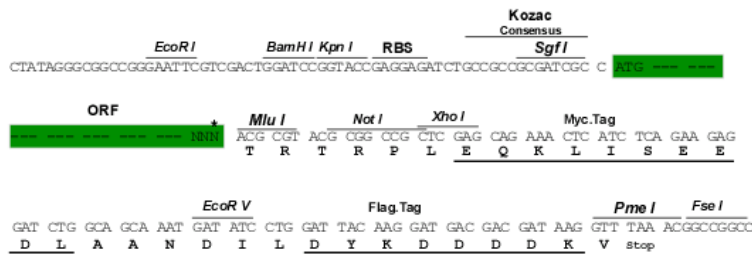
```
MSLQGPLSFKDVAFAFSQEEWQQLDPEERTTYRDVMLETYSNLVSVDYDVTKPNMIKLEQGEWPVTEG
DRHAQRHLEISKVYDPREGIEEIGEKHLQDDDPYCWAERKGAADFDEAYTLETALISPSSGAHSCVSCGE
TLESVSELISSDGSYALEKPSMCFECGKAYGESLEDFNQDEGNSSQHDENILQKVITILEKPFAYECMEAL
DSESVFMARERAYMGEKPYDWGDSGPDFIQMSDFSTYPRSQMELKPFECTQCGKSFCKKSKFIIHQRAHT
GEKPYACSVCGKSFQKGTLTVHRRSHLEEKPYKCNECGKTFCCQLHLTQHQRTHSGEKPVECECGKSF
CQKTHLTLHQRNHSGERPYPNCNECGKFSRKSALNDHQRTHTGEKLYKCNECGKSYRSTLITHQRTHT
GEKPYQCSECGKFFSRVSYLTIHYRSHLEEKPYECTECGKTFNLNSAFIRHWKVHAEERVQECGECGKPS
PLQCAPDHTGDLGEKRYECNECGKTFLDSSAFHRHQSVPEGEKTYECNICGKSFSDSSCYTVHYRGHSEE
KPFGCSECGKTFSHNSSLFRHQRVHTGEKPYECYECGKFFSQKSYLTIHHRHISGEKPYECSKCGKVFSR
MSNLTVHYRSHSGEKPVECECGKVFQKSYLTVHYRTHSGEKPVECECGKFFHRSFAFNHQRIHKRG
TVNVLTVVEKL
```

TRTRPLEQKLISEEDLAANDILDYKDDDDKV

**Restriction Sites:** SgfI-MluI

**Cloning Scheme:**

Cloning sites used for ORF Shuttling:



\* The last codon before the Stop codon of the ORF

**ACCN:** BC059913

**ORF Size:** 2130 bp

**OTI Disclaimer:** The molecular sequence of this clone aligns with the gene accession number as a point of reference only. However, individual transcript sequences of the same gene can differ through naturally occurring variations (e.g. polymorphisms), each with its own valid existence. This clone is substantially in agreement with the reference, but a complete review of all prevailing variants is recommended prior to use. [More info](#)

**OTI Annotation:** This clone was engineered to express the complete ORF with an expression tag. Expression varies depending on the nature of the gene.

**Components:** The ORF clone is ion-exchange column purified and shipped in a 2D barcoded Matrix tube containing 10ug of transfection-ready, dried plasmid DNA (reconstitute with 100 ul of water).

**Reconstitution Method:**

1. Centrifuge at 5,000xg for 5min.
2. Carefully open the tube and add 100ul of sterile water to dissolve the DNA.
3. Close the tube and incubate for 10 minutes at room temperature.
4. Briefly vortex the tube and then do a quick spin (less than 5000xg) to concentrate the liquid at the bottom.
5. Store the suspended plasmid at -20°C. The DNA is stable for at least one year from date of shipping when stored at -20°C.

**Note:** Plasmids are not sterile. For experiments where strict sterility is required, filtration with 0.22um filter is required.

**RefSeq:** [BC059913](#)

**RefSeq Size:** 3256 bp

**RefSeq ORF:** 2132 bp

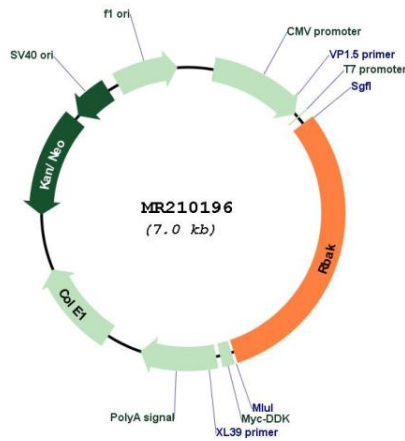
**Locus ID:** 57782

**Cytogenetics:** 5 G2

**MW:** 119.4 kDa

**Gene Summary:** May repress E2F-dependent transcription. May promote AR-dependent transcription. [UniProtKB/Swiss-Prot Function]

**Product images:**



Circular map for MR210196