

Product datasheet for **MR210162**

Tmcc2 (NM_178874) Mouse Tagged ORF Clone

Product data:

Product Type:	Expression Plasmids
Product Name:	Tmcc2 (NM_178874) Mouse Tagged ORF Clone
Tag:	Myc-DDK
Symbol:	Tmcc2
Synonyms:	1110063G11Rik
Mammalian Cell Selection:	Neomycin
Vector:	pCMV6-Entry (PS100001)
E. coli Selection:	Kanamycin (25 ug/mL)



[View online »](#)

ORF Nucleotide
Sequence:

>MR210162 representing NM_178874
Red=Cloning site Blue=ORF Green=Tags(s)

TTTTGTAATACGACTCACTATAGGGCGGCCGGAATTCGTCGACTGGATCCGGTACCGAGGAGATCTGCC
GCCGCGATCGCC

ATGAAGAGGTGCAAAATCGGACGAGCTGCAGCAACAGCAGGGCGAGGAGGATGGGGCTGGGATGGAAGACG
CTGCTTGCTTCTGCCAGGCGCGGACCTCCGGCATGGGGAGGCCTCGAGTGCTAACTCCGCTGGCGGGCC
AACTTCAGATGCTGGCGCTGCGGTGGCACCCAACCCGGTCCCGAAGCAAGCCTCTGATTTAAAGAAA
ATCCAGCAGCTCTCAGAGGGCTCCATGTTTGGCCACGGCCTGAAGCACCTGTTTCACAGCCGCCGAGGT
CACGGGAGAGGGAGCACAGGCGTCTCAGGAGGCCAGCAGCAGCAACAGCAGGGCCTATCCGATCA
GGACTCCCAGATGAGAAGGAACGCTCCCGGAGATGCACCGGTCTCCTATGCTGTGTCCCTGCACGAC
CTGCTGCCCGACCTACTGCTTCAACCGGTGTACAGCAAATCCGCTCCAGGCCCTCCATCAAGCGGG
GCGCCAGCTGCACAGCAGTGGCGGGAGCGGTGGTCCCGTGCCAAGAGCAGCTCCCTGGAGCCACAGCG
TGGCAGTCTCACCTGCTTCGTAAGGCCCCAGGACAGCAGCTGGCCGCCATCTGCACCAGCACCAG
GGCCGACCCCGTTCTCTCTACCAACGACACCGCCTTGCTCCTGGCCGATGGCAGCAGTGCCTACCTCC
TGCTGAGGAAGCAGAGAGCATCGGGGACAAGGGTGACAAGGGAGATCTTGTTGGCCCTGAGCCTCCCTC
TGGCCCTGGCCATGGTACTCTGATGGACCCATCAGCCTGGATGTGCCAGATGGAGCACCAGCCCGGAC
CGAACTAAGGCTGCCATCGAACACCTGCACAAAAGATCTTGAAGTCACTGAGCAGATCAAGATCGAGC
AGGAGGCGCGGGATGATAACGTGGCAGAGTACCTGAAGCTGGCCAACAATGCGGACAAGCAGCAGGTGTC
GCGCATCAAGCAGGTGTTTGAAGAAGAACCAGAAGTCCGCCAGACCATCGCCAGCTGCACAAAAA
CTGGAGCACTACCGTCCGCGCCTGAAGGAAATCGAGCAGAATGGGCCCTCGCGGCAGCCCAAGGATGTGC
TACCGATATGCAGCAAGGGCTGAAGGATGTGGCGCCAACATGCGTGCCGGCATTAGTGGCTTCGGGGG
TGGTGTGGTGGAGGGTGTCAAGGGCAGTCTTCCGGCCTCTCGAAGCTACCCACACTGCGGTGGTGTCC
AAGCCCGGGAGTTCCGACGCTCATTGCAACAAGTTCCGGCAGTGCCGACAACATCGCCACCTGAAGG
ACCCCATGGAAGATGGACCCCTGAAGAGGCAGCCCGGCGCTGAGTGGCAGTGCCACACTGGTGTCCAG
CCCAAGTACGGCAGTGACGATGAATGCTCGAGTGCCAGTGCCAGCTCAGCTGGGGCAGGCAGCAACTCT
GGGGCTGGCCAGGAGGTGCACTGGGAAGCCGAGATCCAACACTCTTTATGGTGGCCCTGGAAATCTGG
ACACTCTGCTGGAGGAACTGCGGGAGATAAAGGAGGGCCAGTACACCTGGAGGACTCCATGGAGGACTT
GAAGACTCAGCTGCAGAGGGACTACACCTACATGACCCAGTGCCTGCAAGAAGAGCGCTACAGGTATGAG
AGGCTGGAGGAACAGCTGAACGACCTGACTGAGCTTACCAGAATGAAATGACCAACCTAAAGCAGGAGC
TGCCAGCATGGAGGAGAAGGTGGCCTACCAGTCTACGAGAGGGCCCGGATATCCAGGAGGCCGTGGA
GTCTGCCTGACCCGAGTACCAAGCTGGAAGTGCAGCAGCAGCAGCAAGTGGTGCAGTTAGAAGGT
GTGGAGAACGCCAACGCGCGCCCTGCTGGGCAAGTTCATCAACGTGATCCTGGCACTCATGGCCGTGC
TGCTGGTGTGTGTCCACCATTGCCAACTTATCACCCTCATGAAGACGCGCCTCCGGATCACCAG
CACCGCCTCTGCTCCTGCTCTTCTACTGTGGAAGCACTGGGCCTCCCTCACCTACCTCCTGGAG
CATGTGCTGCTGCCAGC

ACGCGTACGCGGCCGCTCGAGCAGAACTCATCTCAGAAGAGGATCTGGCAGCAAATGATATCCTGGATT
ACAAGGATGACGACGATAAGGTTTAA

Protein Sequence: >MR210162 representing NM_178874
Red=Cloning site Green=Tags(s)

```

MKRCKSDELQQQGEEDGAGMEDAACLLPGADLRHGEASSANSAGGPTSDAGA AVAPNPGRSKPPDLKK
IQQLSEGSFMFGHLKHLFHSRRRSREREHQASQEAQQQQQQGLSDQDSPDEKERSPEMHRVSYAVSLHD
LPARPTAFNRVLQQIRSRPSIKRGASLHSSGGSGRRAKSSSLEPQRGSPHLLRKAPQDSSLAAIHLHQHQ
GRPRSSSTDTALLLADGSSAYLLAEEAESIGDKGDKDLVALSLPSGPGHGDSDGPI SLDVPDGAPDPQ
RTKAAIEHLHQILKITEQIKIEQEARDNVAEYLKLANADKQQVSRKQVFEKKNQKSAQTIAQLHKK
LEHYRRRLKEIEQNGPSRQPKDVL RDMQQGLKDVGANMRAGISGFGGGVVEGVKGSLSGLSQATHTAVVS
KPREFASLIRNKF GSADNIAHLKDPMEDGPPEEAARALSGSATLVSSPKYGSDDCESSASASSAGAGSNS
GAGPGGALGSPRSNTLYGAPGNLDTLLEELREIKEGQSHLEDSMEDLKTQLQRDYTYMTQCLQEERYRYE
RLEEQLNDLTELHQNEMTNLKQELASMEEKVAYQSYERARDIQEAVE SCLTRVTKLELQQQQQVVQLEGL
VENANARALLGKF INVILALMAVLLVFVSTIANFITPLMKTRLRITSTALLLLVLFLLWKHWASLYLLE
HVLLPS
    
```

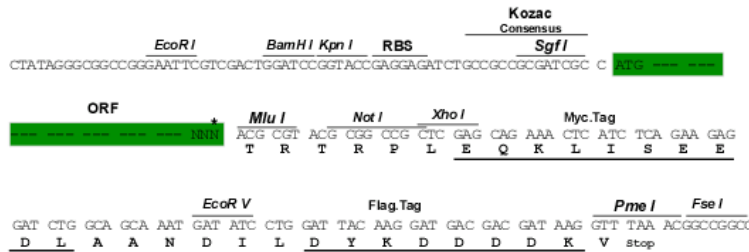
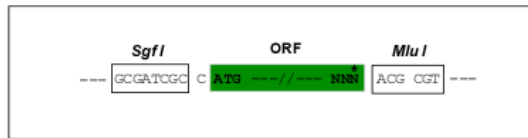
TRTRPLEQKLI SEEDLAANDILDYKDDDDKV

Chromatograms: https://cdn.origene.com/chromatograms/mm9013_g01.zip

Restriction Sites: Sgfl-MluI

Cloning Scheme:

Cloning sites used for ORF Shuttling:



* The last codon before the Stop codon of the ORF

ACCN: NM_178874

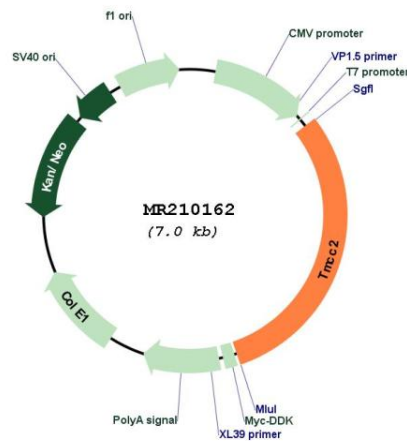
ORF Size: 2118 bp

OTI Disclaimer: The molecular sequence of this clone aligns with the gene accession number as a point of reference only. However, individual transcript sequences of the same gene can differ through naturally occurring variations (e.g. polymorphisms), each with its own valid existence. This clone is substantially in agreement with the reference, but a complete review of all prevailing variants is recommended prior to use. [More info](#)

OTI Annotation: This clone was engineered to express the complete ORF with an expression tag. Expression varies depending on the nature of the gene.

Components:	The ORF clone is ion-exchange column purified and shipped in a 2D barcoded Matrix tube containing 10ug of transfection-ready, dried plasmid DNA (reconstitute with 100 ul of water).
Reconstitution Method:	<ol style="list-style-type: none"> 1. Centrifuge at 5,000xg for 5min. 2. Carefully open the tube and add 100ul of sterile water to dissolve the DNA. 3. Close the tube and incubate for 10 minutes at room temperature. 4. Briefly vortex the tube and then do a quick spin (less than 5000xg) to concentrate the liquid at the bottom. 5. Store the suspended plasmid at -20°C. The DNA is stable for at least one year from date of shipping when stored at -20°C.
RefSeq:	<u>NM_178874.3</u>
RefSeq Size:	3439 bp
RefSeq ORF:	2121 bp
Locus ID:	68875
UniProt ID:	<u>Q80W04</u>
Cytogenetics:	1 E4
MW:	77.5 kDa
Gene Summary:	May be involved in the regulation of the proteolytic processing of the amyloid precursor protein (APP) possibly also implicating APOE.[UniProtKB/Swiss-Prot Function]

Product images:



Circular map for MR210162