

Product datasheet for **MR209851**

Wdr48 (BC048155) Mouse Tagged ORF Clone

Product data:

Product Type:	Expression Plasmids
Product Name:	Wdr48 (BC048155) Mouse Tagged ORF Clone
Tag:	Myc-DDK
Symbol:	Wdr48
Synonyms:	8430408H12Rik; mKIAA1449; Uaf1
Mammalian Cell Selection:	Neomycin
Vector:	pCMV6-Entry (PS100001)
E. coli Selection:	Kanamycin (25 ug/mL)



[View online »](#)

ORF Nucleotide
Sequence:

>MR209851 ORF sequence
Red=Cloning site Blue=ORF Green=Tags(s)

TTTTGTAATACGACTCACTATAGGGCGGCCGGGAATTCGTGACTGGATCCGGTACCGAGGAGATCTGCC
GCCGCGATCGCC

ATGGCGGCCCATCACCGCAGAACACAGCCGGCGGAGGAAAGTGCAGGTTTCTTATGTAATTCGAGATG
AAGTGGAGAAATACAATCGGAATGGAGTCAATGCCCTGCAACTGGACCCAGCACTCAACAGACTCTTCAC
AGCAGGTCGAGACTCCATCATAAGAATATGGAGTGTCAATCAGCACAAGCAAGATCCGTACATAGCATCT
ATGGAGCACCATACAGACTGGTAAATGATGTCGTGCTCTGTTGCAATGGGAAAACGCTAATTTCTGCTT
CTTCAGACACAACAGTCAAAGTCTGGAATGCACATAAAGGGTTCTGCATGTCCACACTCAGGACGCATAA
GGACTATGTAAGGCCTTAGCGTACGCCAAGGATAAAGAGCTGGTAGCGTCAGCTGGGCTGGACAGACAG
ATATTCCTTTGGGATGTGAACACTCTGACGGCACTGACTGCCTCAAACAACACCGTTACAACCTTCTTCTT
TAAGTGGGAACAAAGACTCCATTTATAGCCTGGCCATGAACCAACTGGGAACAATCATTGTATCAGGGTC
CACTGAGAAGGTTCTGAGAGTGTGGGATCCAAGAACCTGCGCGAAACTCATGAAGCTGAAAGGACATACG
GACAATGTGAAGGCCTTGTCTGCTGCACAGGGACGGCACACAGTGCCTCTCTGGGAGTTCTGACGGGACCA
TTCGCCTGTGGTCCCTTGCCAGCAGAGATGTATAGCAACATACCGAGTCCATGATGAAGGTGTTTGGGC
CCTACAGGTCAACGATGCCTTTACACATGTATATTCTGGAGGACGAGACAGGAAAATCTACTGCACAGAC
CTAAGGAACCTGACATTCGGGTACTGATTTGTGAAGAAAAAGCACCAGTTCTCAAGATGGAACCTTGACA
GATCAGCAGATCCCCCTCTGCAATCTGGGTGCAACAACAAAGTCCACAGTAAATAAGTGGACACTGAA
GGGAATTCATAATTTTCGAGCCTCTGGTGATTATGACAATGATTGTACAAACCCATAACGCCCTCTGC
ACACAGCCCGACCAAGTTATTAAGGGGGCGCTAGTATTATTAGTCCACATCCTAAATGACAAGCGAC
ACATATTAACCAAAGATACGAATAACAATGTGGCGTACTGGGATGTATTGAAGGCATGCAAGTGAAGA
TTTGGGCAAAGTGGACTTTGAAGATGAAATTAAGAAAAGATTTAAAATGATGCTGACCATTACCCTGGAT
GAGAGTACTGCTTCGCTGCCTGGGTTTCTGCGAAAGATGCTGGCTTTAGCAGTCTGATGGGTCAGACC
CAAACTGAACCTTAGGAGGACTTCTACTACAGGCACTGCTGGAATACTGGCCAGGACACATGTGACTCC
CATGGATGAAGAAGAGAATGAAGTGAACCATGTGAGTGGGGGACAGGAGACAGAGTCCAGAAGGGAAAT
GGTATTTCCAAGTCCCCCACACCCCCGGTATCTTTGGAGAAGCTGGAGGTCGCACACTATTCAGGC
TGCTCTGCCGGGACTCCGGGGTGAGACTGAGGCGATGCTTCTCAATGAGACGGTGCCACAATGGGTGAT
TGACATCACTGTGGATAAAAATATGCCAAATTAACAAAATTCCTTTCTACCTCAACCTCATGCATCT
TCAGGAGCAAAAACCTTTAAAAAAGACAGGCTGTCTGCCAGTGACATGCTGCAGGTCGGGAAGGTGATGG
AGCACGTCTACGAGAAGATTATCAACCTGGACAATGAGTCCCAAACCACCAGCTCTTCTAATAATGAAAA
GCCAGAGCAGGAGAAGGAGGAGGACATCGCGGTATTGGCAGAGGAGAAAATTGAACCTTCTGTGCCAGGAC
CAGGTTTTGGACCCAAATATGGACCTTCGGACAGTAAAGCACTTCATATGGAAGAGTGGTGGGGACCTCA
CCCTCCATTACCGTCAGAAGTCCAG

ACGCGTACGCGGCCGCTCGAGCAGAACTCATCTCAGAAGAGGATCTGGCAGCAATGATATCCTGGATT
ACAAGGATGACGACGATAAGGTTTAA

Protein Sequence: >MR209851 protein sequence
Red=Cloning site Green=Tags(s)

MAAHRQNTAGRRKVVQSVYIRDEVEKYNRNGVNALQLDPALNRLFTAGRDSIIRIWSVNQHKQDPYIAS
 MEHHTDWNVDVLLCCNGKTLISASSDTTVKVWNAHKGFCMSTLRTHKDYKALAYAKDKELVASAGLDRQ
 IFLWDVNTLTAL TASNNTVTTSSL SGNKDSIYSLAMNQLGTII VSGSTEKVLRVWDPRTCAKLMKLGHT
 DNVKALLHRDGTQCLSGSSDGTIRLWSLGGQRCIATYRVHDEGVWALQVNDAFTHVYSGGRDRKIYCTD
 LRNPDIRVLICEEKAPVLKMELEDRSADPPPAIWVATTKSTVKNWTLKGIHNFASGDYDNDCTNPITPLC
 TQPDQVIKGGASIIQCHILNDRHILTKDTNNAVYWDVLLKACKVEDLGKVFDEIKKRFKMMMLTITLD
 ESDCFAAWWSAKDAGFSSPDGSDPKLNLGGLLLQALLEYWPRTHTVPMDEEENEVNHVSGGQESRVQKGN
 GYFQVPPHTPVIFGEAGGRTLFRLLCRDQSGGETEAMLLNETVPQWVIDITVDKNMPKFNKIPFYLQPHAS
 SGAKTLKKDRLSASDMLQVRKVMHVYEKIINLDNESQTTSSSNNEKPEQEKEEDIAVLAEEKIELLCQD
 QVLDPNMDLRTVKHF IWKSGGDL TLHYRQKST

TRTRPLEQKLISEEDLAANDILDYKDDDDKV

Restriction Sites:

SgfI-MluI

Cloning Scheme:



ACCN: BC048155

ORF Size: 1986 bp

OTI Disclaimer: The molecular sequence of this clone aligns with the gene accession number as a point of reference only. However, individual transcript sequences of the same gene can differ through naturally occurring variations (e.g. polymorphisms), each with its own valid existence. This clone is substantially in agreement with the reference, but a complete review of all prevailing variants is recommended prior to use. [More info](#)

OTI Annotation: This clone was engineered to express the complete ORF with an expression tag. Expression varies depending on the nature of the gene.

Components: The ORF clone is ion-exchange column purified and shipped in a 2D barcoded Matrix tube containing 10ug of transfection-ready, dried plasmid DNA (reconstitute with 100 ul of water).

Reconstitution Method:

1. Centrifuge at 5,000xg for 5min.
2. Carefully open the tube and add 100ul of sterile water to dissolve the DNA.
3. Close the tube and incubate for 10 minutes at room temperature.
4. Briefly vortex the tube and then do a quick spin (less than 5000xg) to concentrate the liquid at the bottom.
5. Store the suspended plasmid at -20°C. The DNA is stable for at least one year from date of shipping when stored at -20°C.

RefSeq: [BC048155](#), [AAH48155](#)

RefSeq Size: 3799 bp

RefSeq ORF: 1988 bp

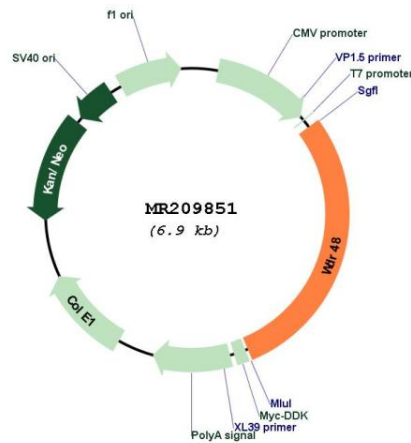
Locus ID: 67561

Cytogenetics: 9 F4

MW: 74.4 kDa

Gene Summary: Regulator of deubiquitinating complexes. Acts as a strong activator of USP1 and USP46. Enhances the USP1-mediated deubiquitination of FANCD2; USP1 being almost inactive by itself. Also activates deubiquitinating activity of complexes containing USP12. Activates deubiquitination by increasing the catalytic turnover without increasing the affinity of deubiquitinating enzymes for the substrate.[UniProtKB/Swiss-Prot Function]

Product images:



Circular map for MR209851