

## Product datasheet for **MR209848**

### **Rpap3 (NM\_028003) Mouse Tagged ORF Clone**

#### **Product data:**

Product Type:	Expression Plasmids
Product Name:	Rpap3 (NM_028003) Mouse Tagged ORF Clone
Tag:	Myc-DDK
Symbol:	Rpap3
Synonyms:	2310042P20Rik; D15Ertd682e
Mammalian Cell Selection:	Neomycin
Vector:	pCMV6-Entry (PS100001)
E. coli Selection:	Kanamycin (25 ug/mL)



[View online »](#)

ORF Nucleotide  
Sequence:

>MR209848 representing NM\_028003  
Red=Cloning site Blue=ORF Green=Tags(s)

TTTTGTAATACGACTCACTATAGGGCGGCCGGAATTCGTCGACTGGATCCGGTACCGAGGAGATCTGCC  
GCC**CGGATCGCC**

ATGACTTCGGCGAGTAAGGCAGTTGAGTTGCAGCTCCAGGTGAAACACAACGCAGAGGAGCTGCAGGACT  
TCATGAGGGACTTGGAGCACTGGGAGAAGGACATGAAGGAGAAGGACCTGGAGCTGAGAAGACAGGGTGG  
CGTTGCCGAGGAGAATTTACCTCTATTGAAATGGGAATTTAGAAAAGAAGAAGAAAGGCAAAGCT  
AAAGAGTCTTCCAGAAAAACAAAGAAGAAAACACGAAAAACAGAATAAAATCTTACGACTATGATGCCT  
GGGCAAACTTGATGTGGACAGGATTCTCGACGAGCTTGACAAAGAAGACAGCACCACGATTCTCTGTC  
CCAGGAGTCAGAGTCGGATGAAGATGGCATTCTGTGGATTCCCAGAAAGCTCTTGTCTAAAAGAAAAG  
GGCAATAAGTACTTCAAGCAAGGAAAGTACGATGAAGCCATTGAATGCTACACGAAAGGCATGGATGCTG  
ACCCCTACAATCCCGTGTGCCAACAAACAGAGCGTCGGCTTACTTCAGACTGAAAAAGTTTGTCTTGC  
TGAGTCTGACTGTAACCTGGCCATCGCCTTGAGCAGGACTTACACCAAGGCGTACGCCAGGCGAGGTGCA  
GCTCGGTTTGTCTGCAGAAAGTTAGAGGACGCCAGAAAAGATTATGAGAAAGTGTAGAAGTGGAGCCAG  
ATAACTTTGAAGCAACAATGAACCTCAGGAAAATTAATCAGGCTTTGACGTCCAAGGAAAACCTCGGGTCC  
TGGAGCAGCTGCTGCTGCGGAGAGTAAGCCAGCTGCAGGGGAGAGCAAACCAACCGGTGGTCAGCAGGGC  
AGGCAGAAAGCCATAGCGGAGAAAGACCTGGGCAACGGATTTTTCAAAGAGGGGAAATACGAGCAAGCAA  
TTGAGTGTACACCCGCGGGATAGCAGCGGACCGCACCAACGCCCTGCTGCCAGCTAACAGAGCGATGGC  
CTATCTCAAGATTCAGAGATATGAAGAAGCTGAAAGAGACTGCACACAAGCTATCGTACTAGATGGCTCA  
TACTCAAAGCGTTTGGCAGAAGAGGAACAGCAAGGACATTTTTGGGAAAGATCAATGAGGCCAAGCAAG  
ACTTTGAGACTGTTTTACTTCTGGAACCTGGAATAAGCAAGCGGCGACCGAGCTTTCAGAATCAAAAA  
GGAACTAATAGAGAAAGGCCACTGGGATGATGTCTTCTTGAAGTCCACACAGAGACACCATGTGGTGAAA  
GCTGTGGATAATCCTCCTCGGGCTCCCTTAAAGCACTCAAGAAGTTTTTATTGAAGAACTGGCAATT  
TGATAGAGACTGTTGATGCACCAGATAGTTCTGCCACTGTCCCTGAGAGTGATCGAGCAACGGCAGCTGT  
GGGCACTGGAACCAAGAAGAATCCAAGCGAGGGCGTCTCTGCTGCAGGGGATAGGCCAAGAGCTAAA  
GTGTTGAAAATAGAAGCAGTCAGTGACACTTCAGCCCCACAAGCACAGGTGGGGTGAAGCAGGATGCGC  
GTCAGCCTGGGAGTGAGAAGGCCTCCGTGAGGGCAGAGCAGATGCCGGTTCAGCTGGCCGCTGCTGGTCT  
GCCTCCAGTTCCTGCCAACTCCTCCAGCTCGAGTCTGATTTTCAGACAGTTGAGAAGTCCCCAGAGATG  
CTGTATCAGTATGTAAGAATATCGAACCATCTTGTATCCGAAGTTGTTTCAGAAAAACCTAGATCCAG  
ATGTATTCAATCAAATCATTAAAGATTCTACACGACTTTTACATTGAGAGGGAAAAGCCAGCTCTCATCTT  
TGAAGTCTTAGAACGACTTTCTCAGCTGAGAAGTTTTGACATGGCGGTGATGTTTATGTCAGGACCTGAG  
AGAAAGCTTACAAATGATTATTCAATCACTTAGAAAAATCAGACCTGAAGGAAGATTCTGTTGAAGAAC  
TCAAGAAAAGATACGGCGGC

**ACGCGT**ACGCGGGCCGCTCGAGCAGAAACTCATCTCAGAAGAGGATCTGGCAGCAAATGATATCCTGGATT  
ACAAGGATGACGACGATAAGGTTTAA



**Reconstitution Method:**

1. Centrifuge at 5,000xg for 5min.
2. Carefully open the tube and add 100ul of sterile water to dissolve the DNA.
3. Close the tube and incubate for 10 minutes at room temperature.
4. Briefly vortex the tube and then do a quick spin (less than 5000xg) to concentrate the liquid at the bottom.
5. Store the suspended plasmid at -20°C. The DNA is stable for at least one year from date of shipping when stored at -20°C.

**RefSeq:** [NM\\_028003.2](#), [NP\\_082279.1](#)

**RefSeq Size:** 2260 bp

**RefSeq ORF:** 1983 bp

**Locus ID:** 71919

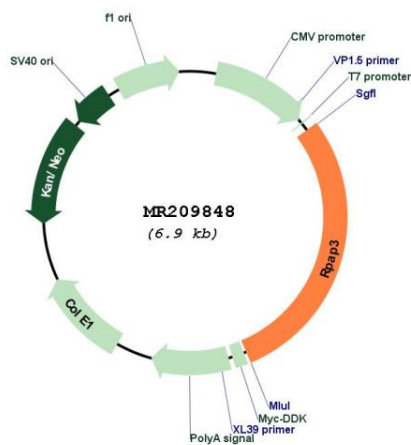
**UniProt ID:** [Q9D706](#)

**Cytogenetics:** 15 53.54 cM

**MW:** 74.1 kDa

**Gene Summary:** Forms an interface between the RNA polymerase II enzyme and chaperone/scaffolding protein, suggesting that it is required to connect RNA polymerase II to regulators of protein complex formation.[UniProtKB/Swiss-Prot Function]

### Product images:



Circular map for MR209848