

## Product datasheet for **MR209834**

### **Slc39a4 (NM\_028064) Mouse Tagged ORF Clone**

#### **Product data:**

Product Type:	Expression Plasmids
Product Name:	Slc39a4 (NM_028064) Mouse Tagged ORF Clone
Tag:	Myc-DDK
Symbol:	Slc39a4
Synonyms:	1600025H15Rik; AU041686; AWMS2; ZIP4
Mammalian Cell Selection:	Neomycin
Vector:	pCMV6-Entry (PS100001)
E. coli Selection:	Kanamycin (25 ug/mL)



[View online »](#)

ORF Nucleotide  
Sequence:

>MR209834 representing NM\_028064  
 Red=Cloning site Blue=ORF Green=Tags(s)

TTTTGTAATACGACTCACTATAGGGCGGCCGGAATTCGTCGACTGGATCCGGTACCGAGGAGATCTGCC  
 GCCGCGATCGCC

ATGCTCCCAAAGTCGGTCACACAGGGACTTGTGTTGGCTCTGCTGGTGGGCACAGTGGCAGTGGCCCGGC  
 CCAGGAACCTGCTCAGCCTGCTCGCCTTGGGCCAGGGTGTCTGGATCGCCTGGAAGTGGACGGCCTGTT  
 AAATACGCTGGTGGCCCGTGTGCACTGCACCGACGGCCGTGTGAAAAGTGTCTGTCTGTGGAGAATGTC  
 TTGGCTCTAGGCAAACCTGACAAGCCACAGCCTGCCCCAGAATCAGTCCTGGAGTCCAGACACATTATTT  
 ACCTTAGTGTCTGCTGCCCTTACCTTAACAACCCAGAGAAAACATGCAAGGACATCCAAGCTGGCCT  
 CTTGGCCTCCCATGTGGACGATTACCTGGCCACACTGGAGAGTCCAGAGGCCATGACCCTGGGTCTGAGC  
 CAGCTACTGCAGAAGATTGAGGCCCATGCTGCCAGCCAACCCACCGGGGAGAAGACCTGTGTAGATCTTC  
 CCCAACTGCTGGAGGAGGCTGAGGCAGCAGGGTTTCCAAAAGCGCCGGCCTGGTCTTGACTGCCTTGCT  
 GGATCATGTCTAATGGGTCTGCTTCCAAGGCCTGCCTAGCCCTCAGTACTTTGTGGACTTTGTGTTT  
 AGGCTACACAGTAGTGACCCTCCAATATCACGCTGCATGAACTGGAGAATTTGATGCATCACCTTGGGG  
 TGGGTGGAGAGGACCACAGTGACCATGATGACCACGGTATCATGCTGACCACAGTCATCCGGACAGGAA  
 AGCCAGCCACCAAGACTCTGAGCTCCATACTCCCACAACAGCAACTCTAGTGTATGGGACACGCTGTGC  
 CTGAGTGCCAAAGATATAATGGCTGTGTATGGGCTATCTGAAGAGGCTGGGGTGAGCCCTCAGGCCTGGG  
 CCCAACTGACCCCTGCCTTGGTCCAGCAGCAGCTAAGTGGAGCCTGCAGCCCTACCCCACTATCCGTAT  
 TCAGGACCAGCTCAGTCAAACAGAGAGGTATCTCTATGGCTCGCTGGCCACCCTGCTCATCTGCCTCTGT  
 GCTGTGTTGCGTCTTCTGCTGCTGACCTGTGCCAAATGCAGCACAGCCACCCACTACATCATGCAGACCT  
 TCCTAAGCTTGGCTGTGGGCGCACTTACCGCGATGCTCTTCTGCACCTGATACCCAAGTGTGGGACT  
 GCACACACATGGTGGAGAGGGTACACCCATGAGGAGGAGGTGGGCGTTGGTGGCAGGCCACCTGGCGC  
 CTGCTGGCTGTACTTGGAGGCTTCTACATCTTCTCTGTTTGGAGGCTTCTTCAACCTCTTGTGCCCA  
 GGGACCAGGATTCTGAGAAAGATGGGCCTTGTAGCCATGGTGGGCACAGCCATGGAATATCTCTGCAGCT  
 GGCACCAAGCAATCTCCGACAGTCCAAACAGACCCATGAAAGCTCTCGTTCAGACTTGGTGGCAGAGGAG  
 ACCCCGGAACACTGAACCCAGAGACCCGGCGACTGAGAGCAGAGCTGAGACTGTTGCCCTATCTGATCA  
 CACTGGGCGACGCGGTACACAACCTCGCTGACGGGCTCGCTGTGGGCGCCGCTTCTCATCCTCGTGGAA  
 GACTGGGCTGGCCACTTATTGGCGGTGTTCTGTGATGAGCTGCCCCATGAACTCGGGGACTTCGCTGCT  
 CTGCTGCATGCCGGGCTGAGTGTGAAGCGTGCCTTTTGTGTAATCTGGCCTCAGCGCTCACAGCATTTCG  
 CAGGCCTCTACGTGGCTCTAGCAGTCGGAGTAGGCGAGGAGGGCGAGGCTTGGATTCTGGCGGTAGCAAC  
 CGGCCTCTTCTTACGTGGCGCTTTGTGACATGCTCCCAGCCATGATGAATGTGCGCGACCAGCGGCC  
 TGGCTTCTTTCTGCTCCACAACGTGGGTCTGCTGGGCGGCTGGACCGTCTGCTGCTGCTGCTGCTGCTGCT  
 ACGAAGACAACATCACCTTC

ACGCGTACGCGGCCGCTCGAGCAGAACTCATCTCAGAAGAGGATCTGGCAGCAATGATATCCTGGATT  
 ACAAGGATGACGACGATAAGGTTTAA

Protein Sequence: >MR209834 representing NM\_028064  
 Red=Cloning site Green=Tags(s)

MLPKSVTQGLVLALLVGTAVARPRNLLSLLALGQGALDRLELDGLLNTLVARVHCTDGPCEKCLSVENV  
 LALGKPKQPAPESVLESRHIIYL SAAAALYLNPEKTCCKDIQAGLLASHVDDYLATLESPEAMTLGLS  
 QLLQKIEAHAASQPTGEKTCVDLPQLLEEAAGVSKSAGLVLTALLDHVINGSFCFQGLPSPQYFVDFVF  
 RLHSSDPPNITLHELENLMHHLGVGGEDHSDHDDHGDHSHDPDRKASHQDSELHTPHNSNSSVWDTLC  
 LSAKDIMAVYGLSEEAGVSPQAWAQLTPALVQQQLSGACSPYPTIRIQDQLSQTERLYGSLATLLICLC  
 AVFGLLLLTCAKCSTATHYIMQTFSLAVGALTGDALLHLIPKVLGLHHTGGEGHTHEEEVGVGGQATWR  
 LLAVLGGFYIFFLFESFFNLLLPRDQDSEKDGPCSHGGHSHGISLQLAPSNLRQSKQTHESSRDLVAEE  
 TPELLNPETRRLRAELRLLPYLITLGDVHNFADGLAVGAAFSSSWKTGLATSLAVFCHELPHELGFDA  
 LLHAGLSVKRALLNLASALTAFAGLYVALAVGVGEEGEAWILAVATGLFLYVALCDMLPAMMNVDRQRP  
 WLLFLLHNVGLLGGWTVLLLLSLYEDNITF

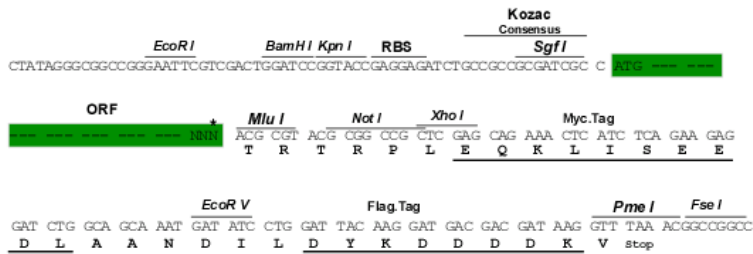
TRTRPLEQKLI SEEDLAANDILDYKDDDDKV

Chromatograms: [https://cdn.origene.com/chromatograms/mm9039\\_e07.zip](https://cdn.origene.com/chromatograms/mm9039_e07.zip)

Restriction Sites: Sgfl-MluI

Cloning Scheme:

Cloning sites used for ORF Shuttling:



\* The last codon before the Stop codon of the ORF

ACCN: NM\_028064

ORF Size: 1980 bp

**OTI Disclaimer:** Due to the inherent nature of this plasmid, standard methods to replicate additional amounts of DNA in E. coli are highly likely to result in mutations and/or rearrangements. Therefore, OriGene does not guarantee the capability to replicate this plasmid DNA. Additional amounts of DNA can be purchased from OriGene with batch-specific, full-sequence verification at a reduced cost. Please contact our customer care team at [custsupport@origene.com](mailto:custsupport@origene.com) or by calling 301.340.3188 option 3 for pricing and delivery.

The molecular sequence of this clone aligns with the gene accession number as a point of reference only. However, individual transcript sequences of the same gene can differ through naturally occurring variations (e.g. polymorphisms), each with its own valid existence. This clone is substantially in agreement with the reference, but a complete review of all prevailing variants is recommended prior to use. [More info](#)

**OTI Annotation:** This clone was engineered to express the complete ORF with an expression tag. Expression varies depending on the nature of the gene.

**Components:** The ORF clone is ion-exchange column purified and shipped in a 2D barcoded Matrix tube containing 10ug of transfection-ready, dried plasmid DNA (reconstitute with 100 ul of water).

**Reconstitution Method:**

1. Centrifuge at 5,000xg for 5min.
2. Carefully open the tube and add 100ul of sterile water to dissolve the DNA.
3. Close the tube and incubate for 10 minutes at room temperature.
4. Briefly vortex the tube and then do a quick spin (less than 5000xg) to concentrate the liquid at the bottom.
5. Store the suspended plasmid at -20°C. The DNA is stable for at least one year from date of shipping when stored at -20°C.

**RefSeq:** [NM\\_028064.3](#)

**RefSeq Size:** 2249 bp

**RefSeq ORF:** 1983 bp

**Locus ID:** 72027

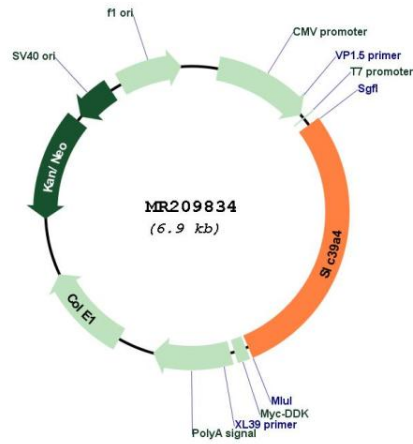
**UniProt ID:** [Q78IQ7](#)

**Cytogenetics:** 15 D3

**MW:** 71.5 kDa

**Gene Summary:** Plays an important role in cellular zinc homeostasis as a zinc transporter. Regulated in response to zinc availability.[UniProtKB/Swiss-Prot Function]

Product images:



Circular map for MR209834