

Product datasheet for **MR209824**

Ddx3y (NM_012008) Mouse Tagged ORF Clone

Product data:

Product Type:	Expression Plasmids
Product Name:	Ddx3y (NM_012008) Mouse Tagged ORF Clone
Tag:	Myc-DDK
Symbol:	Ddx3y
Synonyms:	8030469F12Rik; D1Pas1-rs1; Dby
Mammalian Cell Selection:	Neomycin
Vector:	pCMV6-Entry (PS100001)
E. coli Selection:	Kanamycin (25 ug/mL)



[View online »](#)

**ORF Nucleotide
Sequence:**

>MR209824 representing NM_012008
 Red=Cloning site Blue=ORF Green=Tags(s)

TTTTGTAATACGACTCACTATAGGGCGGCCGGAATTCGTCGACTGGATCCGGTACCGAGGAGATCTGCC
 GCC**CGGATCGCC**

ATGAGTCAAGTGGCAGCGGAAAGTACGGCCGGCTGGACCAGCAATTTGTTGGTCTTGACCTGAAATCAT
 CAGATAATCAGAATGGAGGAGGAAATACAGAGAGCAAAGGGCGCTATATACCTCCTCACTTAAGGAACAG
 AGAAACATCTAAAGGGTCTGTGATAAGGACAGTTCAGGATGGAGCTGTAGTAAAGATAAAGATGCCTAC
 AGCAGTTTTGGATCTCGTGATTCAGAGGGAAGCCCAATTATTTTCAGTGATCGTGGAAAGTGGATCCAGGG
 GAAGGTTTCGATGATCATGGTCAAAATGACTATGATGGTATTGGTGGTCTGACCGAACTGGATTTGGCAA
 ATTTGAACGGAGTGGTCATAGTCGTTGGAGTGACAGATCAGATGAAGATGACTGGTCAAAACCACTTCCA
 CCAAGTGAACGCTTAGAGCAAGAACTTTTTCTGGAGGAAACACAGGGATTAACCTTTGAGAAATATGATG
 ATATACCAAGTAGAAGCAACTGAAATAATTGCCTCCTCACATTGAAAATTTTCAGTGATATTGAGATGGG
 AGAAATTATCATGGGGAACATTGAACCTACTCGTTACACTCGTCTACTCCAGTGCAAAAACATGCTATT
 CCAATTATTAAAGAAAAAGGGACTTAATGGCTTGTGCTCAAACAGGGTCTGGAAAAACTGCTGCATTTTC
 TACTACCCATTCTCAGTCAGATTTATACAGATGGTCCAGGAGAGGCTTTGAAGGCTATGAAGGAAAATGG
 AAGATATGGTCGCCGTAACAATACCCAATCTCCTTGGTGTAGCCCCAACAAAGAGAATTGGCTGTGCAG
 ATCTATGAGGAAGCCAGAAAATTTTCATACCGATCTAGAGTCCGTCCTTGTAGTGTATGGTGGTGGTCTG
 ATACTGTTTCAGCAGATTCGGGACTTAGAACGTGGATGCCACTTGTAGTTGCCACACCAGGACGTCTAGT
 GGACATGATGGAAAGAGGAAAGATTGGATTAGATTTCTGCAAACTTAGTATTGGATGAAGCTGATAGG
 ATGCTGGATATGGGATTTGAACCTCAAATACGTCGTATAGTTGAGCAGGACACAATGCCACCAAAGGGGG
 TTCGTACACTATGATGTTTAGTGCTACTTTTTCTAAGGAGATACAGATGCTTGTGCTGACTTTTTTAGA
 TGAATATATCTTTCTGGCTGTAGGCAGAGTAGGATCTACTTCTGAGAACATCACACAGAAAAGTAGTATGG
 GTTGAAGAACTAGACAAACGGTCAATTTTTACTTGATCTCTTAAATGCAACAGGGAAGGATTCATTGACTT
 TAGTATTTGTGGAGACTAAAAGGGTGCAGATTCGCTGGAGAACTTCTTATTTCAAGAAAGATATGCGTG
 TACTAGTATTCATGGAGACAGATCACAGAAAGATCGAGAGGAGGCCCTTACCAGTTTCGCTCAGGGCGA
 AAGCCAATTTTAGTGGCTACAGCTGTGGCAGCAAGAGGTCTAGACATTTCAAATGTGAAACATGTTATCA
 ATTTTGATTTGCCAAGCGATATTGAAGAATATGTGCATCGAATTGGCCGCACAGGACGTGTAGGAAACCT
 TGGACTTGCCACCTCTTTTTCAATGAGAGGAATTTGAACATCACAAAAGATTTGTTAGATCTCCTTGT
 GAGGCTAAACAAGAAGTGCTTCTTGGTTGAAAGTATGGCTTATGAACACCACTACAAGGGAAGTAGCC
 GTGGACGTTCTAAAAGCAGATTCAGTGGAGGATTTGGAGCCAGAGACTATCGACAGAGCAGTGGTTCTGC
 AAATGCTGGATTTAATAGTAACCGTGCCAATAGCAGCCGAAGTAGTGGTAGTAGCCACAACAGAGGATTT
 GGTGGAGGTGGCTATGGAGGTTTCTACAATAATGATGGTTATGGAGGAAATTATAACTCCAGGCAGTTG
 ACTGGTGGGGCAAT

ACGCGTACGCGGGCCGCTCGAGCAGAAACTCATCTCAGAAGAGGATCTGGCAGCAATGATATCCTGGATT
 ACAAGGATGACGACGATAAGGTTTAA

Protein Sequence: >MR209824 representing NM_012008
 Red=Cloning site Green=Tags(s)

MSQVAAESTAGLDQQFVGLDLKSSDNQNGGGNTESKGRYIPPHLRNRETSKGVCDKSSGWSCSKDKDAY
 SSFGSRDSRGKPNYFSDRGSGSRGRFDDHGRNDYDGIIGRDRTFGKGFERSGHSRWSDRSDEDDWSKPLP
 PSERLEQELFSGGNTGINFEKYDDIPVEATGNCCPPHIENFSDIEMGEIIMGNIELTRYTRTPVQKHAI
 PIIKEKRDLMACAQTGSGKTAFFLLPILSQIYTDGPGEALKAMKENGRYGRRKQYPISLVLAPTRELAVQ
 IYEEARKFSYRSRVRPCVYGGADTVQQIRDLEGRGCHLLVATPGRLVDMMERGKIGLDFCKYLVLEADR
 MLDMGFEPQIRRIVEQDTMPPKGVRRHTMMFSATFPKEIQMLARDFLDEYIFLAVGRVGTSENITQKVW
 VEELDKRSFLLDLLNATGKDSLTLVFVETKKGADSLNENLFLQERYACTSIHGDRSQKDREELHQRFSGR
 KPILVATAVAARGLDISNVKHVINFDLPSDIEEYVHRIGRTGRVGNLGLATSFNERNLNIKDLDLLV
 EAKQEVPSWLESMAEYHHYKSSRGRSKSRFSGGFARDYRQSSGSANAGFNSNRANSSRSSGSSHNRGF
 GGGYGGFYNNQYGGNYNSQAVDWWGN

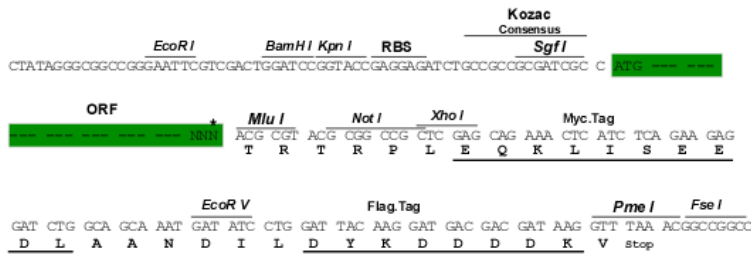
TRTRPLEQKLISEEDLAANDILDYKDDDDKV

Chromatograms: https://cdn.origene.com/chromatograms/ja1785_g05.zip

Restriction Sites: Sgfl-MluI

Cloning Scheme:

Cloning sites used for ORF Shuttling:



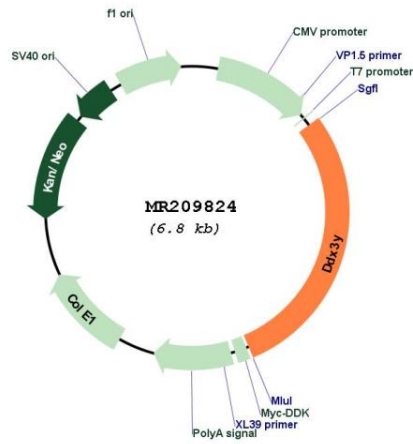
* The last codon before the Stop codon of the ORF

ACCN: NM_012008

ORF Size: 1974 bp

OTI Disclaimer:	<p>Due to the inherent nature of this plasmid, standard methods to replicate additional amounts of DNA in E. coli are highly likely to result in mutations and/or rearrangements. Therefore, OriGene does not guarantee the capability to replicate this plasmid DNA. Additional amounts of DNA can be purchased from OriGene with batch-specific, full-sequence verification at a reduced cost. Please contact our customer care team at custsupport@origene.com or by calling 301.340.3188 option 3 for pricing and delivery.</p> <p>The molecular sequence of this clone aligns with the gene accession number as a point of reference only. However, individual transcript sequences of the same gene can differ through naturally occurring variations (e.g. polymorphisms), each with its own valid existence. This clone is substantially in agreement with the reference, but a complete review of all prevailing variants is recommended prior to use. More info</p>
OTI Annotation:	This clone was engineered to express the complete ORF with an expression tag. Expression varies depending on the nature of the gene.
Components:	The ORF clone is ion-exchange column purified and shipped in a 2D barcoded Matrix tube containing 10ug of transfection-ready, dried plasmid DNA (reconstitute with 100 ul of water).
Reconstitution Method:	<ol style="list-style-type: none"> 1. Centrifuge at 5,000xg for 5min. 2. Carefully open the tube and add 100ul of sterile water to dissolve the DNA. 3. Close the tube and incubate for 10 minutes at room temperature. 4. Briefly vortex the tube and then do a quick spin (less than 5000xg) to concentrate the liquid at the bottom. 5. Store the suspended plasmid at -20°C. The DNA is stable for at least one year from date of shipping when stored at -20°C.
RefSeq:	NM_012008.2 , NP_036138.1
RefSeq Size:	4640 bp
RefSeq ORF:	1977 bp
Locus ID:	26900
UniProt ID:	Q62095
Cytogenetics:	Ypter
MW:	73.9 kDa
Gene Summary:	Probable ATP-dependent RNA helicase. May play a role in spermatogenesis.[UniProtKB/Swiss-Prot Function]

Product images:



Circular map for MR209824