

Product datasheet for MR209735L3

Glb1 (NM_009752) Mouse Tagged Lenti ORF Clone

Product data:

Product Type:	Expression Plasmids
Product Name:	Glb1 (NM_009752) Mouse Tagged Lenti ORF Clone
Tag:	Myc-DDK
Symbol:	Glb1
Synonyms:	AW125515; Bg; Bge; Bgl; Bgl-; Bgl-e; Bgl-s; Bgl-t; Bgs; Bgt; C130097A14Rik
Mammalian Cell Selection:	Puromycin
Vector:	pLenti-C-Myc-DDK-P2A-Puro (PS100092)
E. coli Selection:	Chloramphenicol (34 ug/mL)
ORF Nucleotide Sequence:	The ORF insert of this clone is exactly the same as(MR209735).
Restriction Sites:	SgfI-MluI
Cloning Scheme:	

Cloning sites used for ORF Shuttling:



* The last codon before the Stop codon of the ORF.

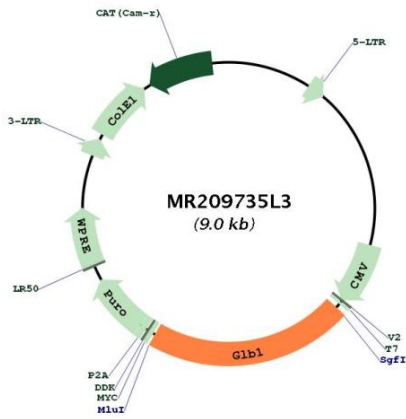
ACCN:	NM_009752
ORF Size:	1944 bp



[View online »](#)

OTI Disclaimer:	The molecular sequence of this clone aligns with the gene accession number as a point of reference only. However, individual transcript sequences of the same gene can differ through naturally occurring variations (e.g. polymorphisms), each with its own valid existence. This clone is substantially in agreement with the reference, but a complete review of all prevailing variants is recommended prior to use. More info
OTI Annotation:	This clone was engineered to express the complete ORF with an expression tag. Expression varies depending on the nature of the gene.
Components:	The ORF clone is ion-exchange column purified and shipped in a 2D barcoded Matrix tube containing 10ug of transfection-ready, dried plasmid DNA (reconstitute with 100 ul of water).
Reconstitution Method:	<ol style="list-style-type: none">1. Centrifuge at 5,000xg for 5min.2. Carefully open the tube and add 100ul of sterile water to dissolve the DNA.3. Close the tube and incubate for 10 minutes at room temperature.4. Briefly vortex the tube and then do a quick spin (less than 5000xg) to concentrate the liquid at the bottom.5. Store the suspended plasmid at -20°C. The DNA is stable for at least one year from date of shipping when stored at -20°C.
RefSeq:	NM_009752.1 , NP_033882.1
RefSeq Size:	2396 bp
RefSeq ORF:	1944 bp
Locus ID:	12091
UniProt ID:	P23780
Cytogenetics:	9 64.4 cM
Gene Summary:	This gene encodes a preproprotein that is proteolytically cleaved to yield a signal peptide and a proprotein that is subsequently processed to generate the active mature peptide. The encoded protein is a lysosomal enzyme that catalyzes the hydrolysis of terminal beta-D-galactose residues in various substrates like lactose, ganglioside GM1 and other glycoproteins. Mutations in the human gene are associated with GM1-gangliosidosis and Morquio B syndrome. Disruption of the mouse gene mirrors the symptoms of human gangliosidosis. Alternative splicing results in multiple transcript variants. [provided by RefSeq, Dec 2013]

Product images:



Circular map for MR209735L3