

## Product datasheet for MR209645L3

### Gga1 (NM\_145929) Mouse Tagged Lenti ORF Clone

#### Product data:

Product Type:	Expression Plasmids
Product Name:	Gga1 (NM_145929) Mouse Tagged Lenti ORF Clone
Tag:	Myc-DDK
Symbol:	Gga1
Synonyms:	4930406E12Rik; AU016030; AW209092
Mammalian Cell Selection:	Puromycin
Vector:	pLenti-C-Myc-DDK-P2A-Puro (PS100092)
E. coli Selection:	Chloramphenicol (34 ug/mL)
ORF Nucleotide Sequence:	The ORF insert of this clone is exactly the same as(MR209645).
Restriction Sites:	SgfI-MluI
Cloning Scheme:	

Cloning sites used for ORF Shuttling:



\* The last codon before the Stop codon of the ORF.

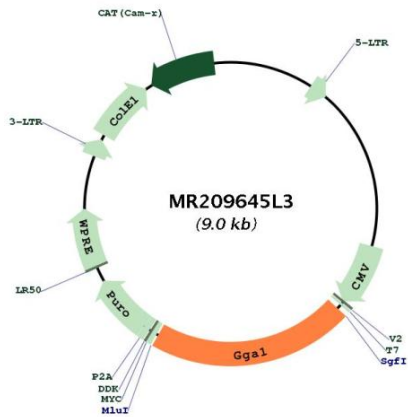
ACCN:	NM_145929
ORF Size:	1905 bp



[View online >](#)

<b>OTI Disclaimer:</b>	The molecular sequence of this clone aligns with the gene accession number as a point of reference only. However, individual transcript sequences of the same gene can differ through naturally occurring variations (e.g. polymorphisms), each with its own valid existence. This clone is substantially in agreement with the reference, but a complete review of all prevailing variants is recommended prior to use. <a href="#">More info</a>
<b>OTI Annotation:</b>	This clone was engineered to express the complete ORF with an expression tag. Expression varies depending on the nature of the gene.
<b>Components:</b>	The ORF clone is ion-exchange column purified and shipped in a 2D barcoded Matrix tube containing 10ug of transfection-ready, dried plasmid DNA (reconstitute with 100 ul of water).
<b>Reconstitution Method:</b>	<ol style="list-style-type: none"><li>1. Centrifuge at 5,000xg for 5min.</li><li>2. Carefully open the tube and add 100ul of sterile water to dissolve the DNA.</li><li>3. Close the tube and incubate for 10 minutes at room temperature.</li><li>4. Briefly vortex the tube and then do a quick spin (less than 5000xg) to concentrate the liquid at the bottom.</li><li>5. Store the suspended plasmid at -20°C. The DNA is stable for at least one year from date of shipping when stored at -20°C.</li></ol>
<b>RefSeq:</b>	<a href="#">NM_145929.2</a> , <a href="#">NP_666041.1</a>
<b>RefSeq Size:</b>	3034 bp
<b>RefSeq ORF:</b>	1908 bp
<b>Locus ID:</b>	106039
<b>UniProt ID:</b>	<a href="#">Q8R0H9</a>
<b>Cytogenetics:</b>	15 E1
<b>Gene Summary:</b>	Plays a role in protein sorting and trafficking between the trans-Golgi network (TGN) and endosomes (PubMed:25405894). Mediates the ARF-dependent recruitment of clathrin to the TGN and binds ubiquitinated proteins and membrane cargo molecules with a cytosolic acidic cluster-dileucine (DXLL) motif. Mediates export of the GPCR receptor ADRA2B to the cell surface (By similarity). Required for targeting PKD1:PKD2 complex from the trans-Golgi network to the cilium membrane (PubMed:25405894). Regulates retrograde transport of proteins such as phosphorylated form of BACE1 from endosomes to the trans-Golgi network (By similarity).[UniProtKB/Swiss-Prot Function]

Product images:



Circular map for MR209645L3