

Product datasheet for **MR209627**

Gstcd (NM_026231) Mouse Tagged ORF Clone

Product data:

Product Type:	Expression Plasmids
Product Name:	Gstcd (NM_026231) Mouse Tagged ORF Clone
Tag:	Myc-DDK
Symbol:	Gstcd
Synonyms:	4933434L15Rik
Mammalian Cell Selection:	Neomycin
Vector:	pCMV6-Entry (PS100001)
E. coli Selection:	Kanamycin (25 ug/mL)



[View online »](#)

ORF Nucleotide
Sequence:

>MR209627 representing NM_026231
Red=Cloning site Blue=ORF Green=Tags(s)

TTTTGTAATACGACTCACTATAGGGCGGCCGGAATTCGTCGACTGGATCCGGTACCGAGGAGATCTGCC
GCCGCGATCGCC

ATGAAAGGCATTAAGAAAAGTCCTACGGAGGAATCTCTGTACCTGGAGTACTCTACCAAACAGAAGGCT
GCATCTTTCTCTCCACACGTCTGTAACCTTTGTTTTACTATCATACTGTGAATGCAAGGCTTTAACGT
TTGCTTAGTCCTCACTGAAGAAAGTACAGATACTTCAGACACTTCGTTCCATAAAGAGGCACTGCCCCAG
GACCTGGAAATACAGGTTATTTCAAAGCAGGCGCTCCCTCCGATTGTCCAGAATTGCTGTTTGCCTGCAG
TGGTAGATCAACCTGACGTTTTCTGTAGGGCAGGCCTTGTGTTGCTGAGACACATAATCCAAAAATC
CTATGAAGCTGAGCCCTCAAGAAAGGAAATTTTGGAACTCTGGGTTTTAAAAAGACTTGTTTGAAAGCT
TGTGCTGAAGTTAGTCAGTGGACCAGGCTATGTGAACTCACCATCCCTTTGGCTGTTGAGAAATTTCTCC
AAGAGTCTCTGAGCATCCCCAACTATCCCTGAAGAAATCCTAGAGCTCGAGAGGAAGCTCAGTGAGCC
TGTCAGAGTACACAATGATGACAACTCCGAAGACAGAAGCTGAAGCAACAGAAGGCTGCTGGCAGTGAG
CCTCCCTCCGGGAAGGGGAAAGCAAAGAGCAAGGCAAGTGCACAGAAGACACCCAAAGACTTGGCTGCTC
CCTCCAAGAGTCTGGAAGTGAAGGTGGCGTTCTCAAAGCTCACAGTGAAGAAGATGCAGCTGCTAGCAA
CAGGGAGCCTTCTCACATCAGGAAAGCAAAAGCCGCGACCTCCCGCCTCTGGAGCACGTTTTGCAGAA
GGACTGTACTTCACTTTGGCAGACATCGTGCTTTTGCCTGTATTACCACCTTTTTGGTAATTATCTGCA
AGAAATTTTCAGAGAAGCTGGAACAGTTTCCACTACTAACCTCTTGGTATCAGAGGATTCAGGAAGTGCC
AAAAGTCAAACAGCAGCTTCCAAGTGTGGGATCTACTTTCTGTATTTACCAGAATTGCTGAACTCTGCA
AGGAAACAGCCTGTGAATCTGATGAAGTAGCAGCTGTAGATGAGCAAAGTGACCCTTTATTTATAGGAG
GACCAAGACCCTGACTGACCAAGTTGATGGAAAAAGGCATTGAAGCCATGTTTTCTCCGACCCCTTGTC
TGCTTGGACCCTTGACTGGAGCAGTCTTCTGCTGCCGTGAGCCGGAAGGAAGGTAATGTCCACTGAC
CGAGCTCTGAGGAAACAGCAGCAGTAAACAACCTTGTCTACCTGGTGTGAATCAAGCCAAACCTGGGG
ACAGAATTGTGGATTTCTGCAGTGGCGGGGCCATGTTGGAATTGCTTGGCCACATGCTGCCCTCGTG
CCAGGTTACGTTAATAGAGAACAAGGAATTATCATTAATCCGTGCTAAGAAGAGAAGTGACGAACCTGGT
TTAAGCAATATTTGGTTCATTCAAGCAATATGGAGATTTTACAGGAATGTTTAAACATTGGGGTGGCCT
TGCACGCTTGTGGAGTGGCAACAGACATGGTGATCGAGCACTGCATCCAAACACGGGCTTCTTTCATCAC
ATGCCCTGCTGTACGGGTTTCAATCAGAACACATCCAAGTTAACTTCCAAAAAGTGAAAAATCAAG
AAAATTTATCATACAAGGAACACATGCTCCTCTGCAGATTTGCCGATCAGACAGCTGTCCAGCTCCCAC
CCGAGAGGAGACTCATAGGGAAGCAGTGCATGGGCCTGGTGGATCTGGACCGAGCAGCAGCAGGAGA
ACACGGCTACTCTGTTCAAGTGATCTCTATGGAGCCAGAGAGCTGCTCTCCAAGAACAACATGATTGTG
GGTGTCCCTTG

ACGCGTACGCGGCCGCTCGAGCAGAACTCATCTCAGAAGAGGATCTGGCAGCAATGATATCCTGGATT
ACAAGGATGACGACGATAAGGTTAA

Protein Sequence: >MR209627 representing NM_026231
 Red=Cloning site Green=Tags(s)

MKGIKKSPTTEESLYLEYSHQTEGCIFPLHTSVTLFLLSYCECKVFNVCLVLTTEESTDTSDFLKEALPQ
 DLEIQVISKQALPPIVQNCCLPAVVDQPDVFCRAGLAVLRLHIQKS YEAEPSRKEILELLGFKKCLKA
 CAEVSQWTRLCELTIPLAVENFLQESSEHPPTIPEEILELERKLSQVVRVHNDKLRQKQKQKAAGSE
 PPSGKGAKSASAQKTPKDLAAPSLSLELKVAFSKLTVQEDAAAANSREPESHIRKAKAADLPPELVFAE
 GLYFTLADIVLLPCIHFLVLIICKKFSEKLEQFPLLSWYQRIQEVPKVKTAASKCGIYFLYLPPELLNSA
 RKQPVNSDEVAVDEQSDPLFIGGPRPTMTKLMKGEAMFSPHPCPAWTLDWSSSLPAAVSPKEGKMSTD
 RALRKQQLNLLVYLVLNQAKPGDRIVDFCSGGGHVIGVLAHMLPSCQVTLIENKELSLIRAKKRDELG
 LSNIWFIQANMEYFTGMFNIGVALHACGVATDMVIEHCIQTRASFITCPCCYGFIQNTSKFNFPKSEKFK
 KTL SYKEHMLLCRFADQTAVQLPPERRLIGKQCMGLVDLDRAAAAGEHGYSVQVISMEPESCSKNNMIV
 GVPL

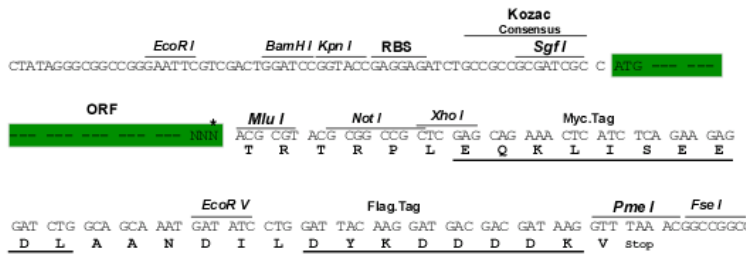
TRTRPLEQKLI SEEDLAANDILDYKDDDDKV

Chromatograms: https://cdn.origene.com/chromatograms/mm9077_g01.zip

Restriction Sites: SgfI-MluI

Cloning Scheme:

Cloning sites used for ORF Shuttling:



* The last codon before the Stop codon of the ORF

ACCN: NM_026231

ORF Size: 1902 bp

OTI Disclaimer: The molecular sequence of this clone aligns with the gene accession number as a point of reference only. However, individual transcript sequences of the same gene can differ through naturally occurring variations (e.g. polymorphisms), each with its own valid existence. This clone is substantially in agreement with the reference, but a complete review of all prevailing variants is recommended prior to use. [More info](#)

OTI Annotation: This clone was engineered to express the complete ORF with an expression tag. Expression varies depending on the nature of the gene.

Components: The ORF clone is ion-exchange column purified and shipped in a 2D barcoded Matrix tube containing 10ug of transfection-ready, dried plasmid DNA (reconstitute with 100 ul of water).

Reconstitution Method:

1. Centrifuge at 5,000xg for 5min.
2. Carefully open the tube and add 100ul of sterile water to dissolve the DNA.
3. Close the tube and incubate for 10 minutes at room temperature.
4. Briefly vortex the tube and then do a quick spin (less than 5000xg) to concentrate the liquid at the bottom.
5. Store the suspended plasmid at -20°C. The DNA is stable for at least one year from date of shipping when stored at -20°C.

RefSeq: [NM_026231.3](#)

RefSeq Size: 2633 bp

RefSeq ORF: 1905 bp

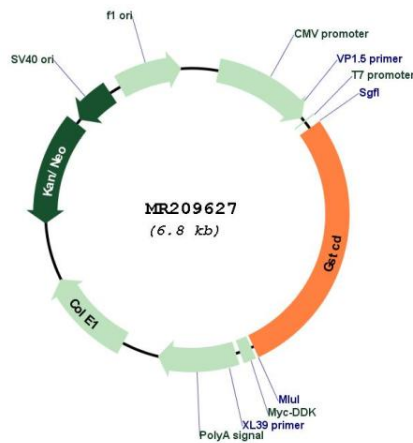
Locus ID: 67553

UniProt ID: [Q5RL51](#)

Cytogenetics: 3 G3

MW: 70.6 kDa

Product images:



Circular map for MR209627