

Product datasheet for **MR209598**

Tacc3 (NM_001040435) Mouse Tagged ORF Clone

Product data:

Product Type:	Expression Plasmids
Product Name:	Tacc3 (NM_001040435) Mouse Tagged ORF Clone
Tag:	Myc-DDK
Symbol:	Tacc3
Synonyms:	Aint; C86661; Eric1
Vector:	pCMV6-Entry (PS100001)
E. coli Selection:	Kanamycin (25 ug/mL)
Cell Selection:	Neomycin



[View online »](#)

ORF Nucleotide Sequence:

>MR209598 ORF sequence
 Red=Cloning site Blue=ORF Green=Tags(s)

TTTTGTAATACGACTCACTATAGGGCGGCCGGAATTCGTCGACTGGATCCGGTACCGAGGAGATCTGCC
 GCC**CGGATCGCC**

ATGAGTCTGCATGTCTTAAATGACGAAAACGTGCCAATGAAAAGAGTTCACAGTGCCGTGATTTCCAGT
 TTTTGCCACCAGAACTTACCGGCAGATCATCTGTTCTTTGTCTGTGCACAGAAAGAAAATGTACCACCCCA
 GAGCCAGGCTAAGGCCACAAATGTGACGTTCCAGACACCACCTCGGGATCCACAGACACACAGGATCTTA
 AGTCTAACATGACCAATAAGCGTGAGGCTCCTTTGGATTACAAAATGACCACTGTGTCTTCTTACAGA
 AAGAAAACCAGCGGCTTTAGCCCCAGTGGATGATGCACCTGTGGTTCAAATGGCAGCTGAGATCTTAAG
 AGCAGAAGGCGAGTTACAGGAGGGAATCTTGACTTCTCAAGCCTTTCAGCTTCCACAAGTCTTCTGGAC
 AGTGAGCTGGTGACCCCTCCTATCGAGCCAGTGTGGAGCCTTCCATCAGGGACTAGAACCTGTCTTGG
 AAAGTGAGCTGGTGACCCCTCCTGTTGAGCCAGTGTGGAGCCTTCCATCAGGAACTAGAACCTGTCTT
 GAAAAGTGAGCTGGTGACCCCTCCTATTGAGCCAGTGTGGAGCCTTCCATCAGGGACTAGAACCTGTC
 TTGGACAGTGAGCTGGTGACCCCTCCTATTGAGCCAGTGTGGAGCCTTCCATCAGGGACTAGAACCTG
 TCTTAGAAAGTGAGCTGGTGACCCCTCCTATTGAGCCAGTGTGGAGCCTTCCATCAGGGACTAGAACC
 TGTCTTGGACAGTGAGCTGGTGACCCCTCCTATTGAGCCAGTGTGGAGCCTTCCATCAGGGACTAGAA
 CCTGTCTTGGACAGTGAGCTGGTGACCCCTCCTATCGAGCCTTGTGGAGCCTTCCATCAGGGACTAG
 AACCTGTCGTGGATCTAAAGGAAGAGAGCTTCCAGACCCATCAGAAGTCTAGGTAAGTGGTGTGAAGT
 GGATTAATCGAGCAGTTTGAAGTCTCTCGTTTAAAGGAGTCGGCCTGGAGGAAGCAGTCTTTGTACGTG
 AAATTTGACCCTCTTCTGAAAGACAGCCCTTTCGGCCAATGCCGGTGGCCCAATAACAATAGTACAC
 AGGATACAGAGGAGGAGTCTGGTTCTGAAAGCCGACAGAAGCTGAGCTTGTCAACTTAGATTTCTTGGG
 AGATTTGGATGTTCCGGTATCTGCCACCCCTGTGTCTTGGAGCCTCGAGGTCTCCTTCTGCTGAG
 CCTATTGTGGATGTGCTGAAGTACAGCCAGAAAGACCTGGATGCAGTGGTGAATGTGATGCAGCAGGAGA
 ACTTGGAGCTGAAAAGCAAGTATGAGGACCTCAACACAAAATATTTGGAGATGGGGAAGTCCGTTGATGA
 GTTTGAGAAGATCGCGTACAAATCATTGGAGGAGGCTGAGAAACAGAGGGAAGTAAAGGAAATAGCTGAA
 GACAAAATCCAAAAGTTTTAAAGAGAGAGACCAACTTAAATGCAGACCTGAACTCCATGGAAAAGTCTT
 TTTCTGACCTTTCAAACGGTTTGAAGAAGCGGAAGGAAGTATTGAAGGCTACCAGAAGAATGAAGAGTC
 ACTGAAGAAGTATGTTGGGAATGCATAGTAAAATTGAAAAGAAGGCCAGAGGTACCAGGCGCTGAAG
 ATCCATGCAGAAGAAAAGCTCAGGCTGGCAAAATGAGGAGATCGCCAGGTACACAGCAAGGCCCAAGCAG
 AGGTAAGTGGCTTTGCAGGCAAGCCTGAGGAAGGCACAAATGCAGAACCCTCGCTGGAGATGACTCTGGA
 GCAGAAGACAAAAGAAATTGATGAGCTGACCCGGATCTGTGATGACCTCATCTCTAAGATGGAGAAGATC

ACGCGTACGCGGCCGCTCGAGCAGAAACTCATCTCAGAAGAGGATCTGGCAGCAATGATATCCTGGATT
 ACAAGGATGACGACGATAAGGTTTAA

Protein Sequence:

>MR209598 protein sequence
 Red=Cloning site Green=Tags(s)

MSLHVLNDENVNPKSSQCRDFQFLPPELTGRSSVLCLSQKENVPPQSQAATNVTFQTPPRDPQTHRIL
 SPNMTNKREAPFGLQNDHCVFLQKENQRPLAPVDDAPVVQMAAEILRAEGELQEGILTSSSLASSTSLLD
 SELVTPPIEPVLEPSHQGLEPVLESELVTPPEVPVLEPSHQLEPVLESELVTPPIEPVLEPSHQGLEPV
 LDSELVTPPIEPVLEPSHQGLEPVLESELVTPPIEPVLEPSHQGLEPVLDSELVTPPIEPVLEPSHQGLE
 PVLDSSELVTPPIEPLLEPSHQGLEPVLDLKEESFRDPSEVLGTGAQVDYLEQFGTSSFKESAWRKQSLYV
 KFDPLLKDSPLRMPVAPITNSTQDTEESGSGKPTAEELVNLDFLDLDPVVSAPPLCVLEPRGLLPAE
 PIVDVLKYSQKDLDAVVNMQQENLELKSXYEDLNTKYLEMGKSVDEFEKIAYKSLEEAEKQRELKEIAE
 DKIQKVLKERDQLNADLNSMEKSFSDLFKRFEKRKEVIEGYQKNEESLKKYVGEICVKIEKEGQRYQALK
 IHAEKLRLANEEIAQVHSAQAQAEVLALQASLRKAQMNHSLMTELEQKTEIDELTRICDDLISKMEKI

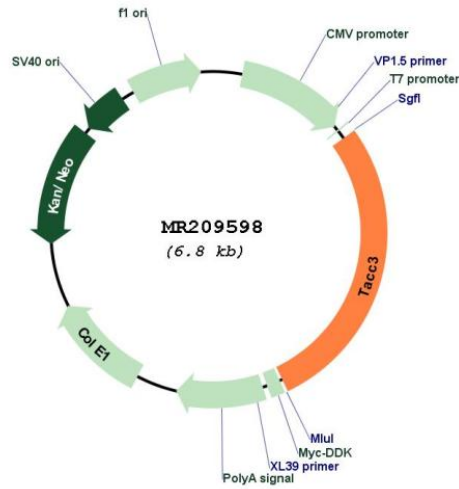
TRTRPLEQKLISEEDLAANDILDYKDDDDK**V**

Restriction Sites: SgfI-MluI

Cloning Scheme:



Plasmid Map:



ACCN: NM_001040435

ORF Size: 1890 bp

OTI Disclaimer: Due to the inherent nature of this plasmid, standard methods to replicate additional amounts of DNA in E. coli are highly likely to result in mutations and/or rearrangements. Therefore, OriGene does not guarantee the capability to replicate this plasmid DNA. Additional amounts of DNA can be purchased from OriGene with batch-specific, full-sequence verification at a reduced cost. Please contact our customer care team at custsupport@origene.com or by calling 301.340.3188 option 3 for pricing and delivery.

The molecular sequence of this clone aligns with the gene accession number as a point of reference only. However, individual transcript sequences of the same gene can differ through naturally occurring variations (e.g. polymorphisms), each with its own valid existence. This clone is substantially in agreement with the reference, but a complete review of all prevailing variants is recommended prior to use. [More info](#)

OTI Annotation: This clone was engineered to express the complete ORF with an expression tag. Expression varies depending on the nature of the gene.

Components: The ORF clone is ion-exchange column purified and shipped in a 2D barcoded Matrix tube containing 10ug of transfection-ready, dried plasmid DNA (reconstitute with 100 ul of water).

Reconstitution Method:

1. Centrifuge at 5,000xg for 5min.
2. Carefully open the tube and add 100ul of sterile water to dissolve the DNA.
3. Close the tube and incubate for 10 minutes at room temperature.
4. Briefly vortex the tube and then do a quick spin (less than 5000xg) to concentrate the liquid at the bottom.
5. Store the suspended plasmid at -20°C. The DNA is stable for at least one year from date of shipping when stored at -20°C.

RefSeq: [NM_001040435.3](#)

RefSeq Size: 2649 bp

RefSeq ORF: 1893 bp

Locus ID: 21335

Cytogenetics: 5 B2

MW: 70.5 kDa