

Product datasheet for **MR209533**

Srp68 (NM_146032) Mouse Tagged ORF Clone

Product data:

Product Type:	Expression Plasmids
Product Name:	Srp68 (NM_146032) Mouse Tagged ORF Clone
Tag:	Myc-DDK
Symbol:	Srp68
Synonyms:	2610024I03Rik
Mammalian Cell Selection:	Neomycin
Vector:	pCMV6-Entry (PS100001)
E. coli Selection:	Kanamycin (25 ug/mL)



[View online »](#)

Restriction Sites: SgfI-MluI

Cloning Scheme:



ACCN: NM_146032

ORF Size: 1878 bp

OTI Disclaimer: The molecular sequence of this clone aligns with the gene accession number as a point of reference only. However, individual transcript sequences of the same gene can differ through naturally occurring variations (e.g. polymorphisms), each with its own valid existence. This clone is substantially in agreement with the reference, but a complete review of all prevailing variants is recommended prior to use. [More info](#)

OTI Annotation: This clone was engineered to express the complete ORF with an expression tag. Expression varies depending on the nature of the gene.

Components: The ORF clone is ion-exchange column purified and shipped in a 2D barcoded Matrix tube containing 10ug of transfection-ready, dried plasmid DNA (reconstitute with 100 ul of water).

Reconstitution Method:

1. Centrifuge at 5,000xg for 5min.
2. Carefully open the tube and add 100ul of sterile water to dissolve the DNA.
3. Close the tube and incubate for 10 minutes at room temperature.
4. Briefly vortex the tube and then do a quick spin (less than 5000xg) to concentrate the liquid at the bottom.
5. Store the suspended plasmid at -20°C. The DNA is stable for at least one year from date of shipping when stored at -20°C.

RefSeq: [NM_146032.3](#), [NP_666144.3](#)

RefSeq Size: 2546 bp

RefSeq ORF: 1878 bp

Locus ID: 217337

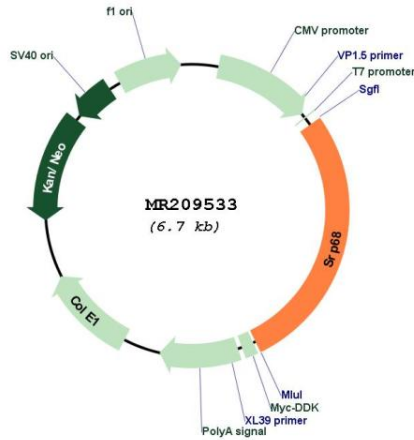
UniProt ID: [Q8BMA6](#)

Cytogenetics: 11 E2

MW: 70.6 kDa

Gene Summary: Signal-recognition-particle assembly has a crucial role in targeting secretory proteins to the rough endoplasmic reticulum membrane. SRP68 binds the 7S RNA, SRP72 binds to this complex subsequently. This ribonucleoprotein complex might interact directly with the docking protein in the ER membrane and possibly participate in the elongation arrest function (By similarity).[UniProtKB/Swiss-Prot Function]

Product images:



Circular map for MR209533