

Product datasheet for **MR209532**

Acad9 (NM_172678) Mouse Tagged ORF Clone

Product data:

Product Type:	Expression Plasmids
Product Name:	Acad9 (NM_172678) Mouse Tagged ORF Clone
Tag:	Myc-DDK
Symbol:	Acad9
Synonyms:	2600017P15Rik; 4732402K02; C630012L17Rik; NPD002
Vector:	pCMV6-Entry (PS100001)
E. coli Selection:	Kanamycin (25 ug/mL)
Cell Selection:	Neomycin



[View online »](#)

ORF Nucleotide Sequence:

>MR209532 ORF sequence
 Red=Cloning site Blue=ORF Green=Tags(s)

TTTTGTAATACGACTCACTATAGGGCGGCCGGGAATTCGTCGACTGGATCCGGTACCGAGGAGATCTGCC
 GCC**CGGATCGCC**

ATGTCTGGCTGTGTGCTGCTCTCGCGTGGGGCGACTGCGGCGCGGCTGCGGCGCGAGCTTCCCGGGTGC
 TGAGGGAATTCACGGCGAGGCGCCGCCCTGCACACCAGCCTGCAGAGCTGCTCGTTCCGCAAGGAGCT
 CTTCTGGGCAACATCGAGCAGAAAGGAGTTTTCCATTTCAGAGGTCAGTCAACATGAACTTAGTGAA
 ATCAATCAGTTTCGTGGGACCGCTGGAAAAATTCTCACTGAAGAAGTGGACTCTCGAAAAATTGACCAGG
 AGGGAAAAATCCCAGTTGACACCTTAGAGAAGTTGAAGAGCCTGGGACTTTTTGGCATACAGGTCCAGA
 AGAATATGGTGGCCTGGCCTCTCAACACGATGTATGCTCGGCTCGGGGAGATCATCAGCCTGGATGCC
 TCTATCACGGTGACCCTGGCAGCACACCAGGCTATCGGCCTCAAGGGGATTATCTTGGTCCGCAATGAGG
 AACAGAAGGCCAAGTATCTGCCAAACTGTCGTCTGGGGAACACATCGCAGCCTTCTGCCTAACAGAGCC
 AGCCAGTGGGAGTGATGCTGCGTCCATCCAGACCAGAGCTACGTTAAGTGAAGATAAGAAGTACTTCATA
 CTAATGGCTCCAAGTTTTGGATCACC AATGGAGGACTGGCCAATATTTTTACTGTGTTGCAAAAACCG
 AGGTGGTCGATTCTGATGGTTCGAAAACAGACAAAATGACCGCATTTCATAGTAGAAAAGAGACTTCGGCGG
 AATCACTAATGGGAAACCTGAAGATAAATTAGGCATTCGAGGCTCCAACACATGTGAGGTCCATTTTGAA
 AATACCAGAGTGCCTGTGGAAAAATGTCCTTGGAGAAGTTGGAGGGGGCTTTAAGGTAGCCATGAACATCC
 TGAACAGTGGGCGATTGAGCATGGGCGAGTGTGTGGCCGGGATGCTGAAGAAGCTGATCGAACTGACTGC
 TGAGTAGCCTGTACGAGGAAACAGTTCAACAGGAATCTCAGTGAATTTGGTTGATCCAGGAAAAGTTT
 GCGCTCATGGCTCAGAAGGCATACGTAATGGAGAGTATGGCTTACCTCACTTCAGGGATGCTAGACCAAC
 CAGGATTTCCCGACTGCTCTATCGAGGCGCCATGGTGAAGGTGTTTAGCTCTGAGGCTGCCTGGCAGTG
 TGTGAGCGAGGCTCTGCAGATCCTTGGGGCTCAGGCTACATGAAGGACTACCCCTATGAGCGCATGCTG
 CGTGATGCCCGCATTCTCCTAATCTTTGAGGGAACCAATGAGATTCTTCGTTGTTTCATTGCCCTGACAG
 GCCTGCAGCATGCTGGACGCATCCTGACCTCGAGGATCAAAGAGCTTAAAAGTGGCAATGTGACCACAGT
 CATGGAGACGATTGGTCGGAAACTTCGGGATTCTCTGGGCCGAACTGTGGACCTGGGGCTAACAGGCGAT
 CTTGGTGTGTCCACCCAGCCTTGGCGACAGTGCCAACAAAGCTTGAGGAAAATGTCCATTACTTTGGCC
 GGACTGTTGAGACCCTGTACTCCGTTTTGAAAGAACATTGTAGAGGAACAGCTGGTGTAAAGCGGGT
 AGCCAACATCCTCATCACTTGTATGGCATGACTGCTGTGCTGTGAGAGCCAGCCGCTCCATCAGAATT
 GGGCTCAGGAATCATGATCACGAGGTTCTGTTGGCCAACATGTTCTGTGTTGGAAGCTTATTTCCAGAAC
 TCTTCAGCCTGTCTCAGCTGGACAAGAAGCCTCCAGAAAACCTGGATGAGCAGATTAAGAAAGTGTCTCG
 GCAGATCCTTGAGAAGCGAGCCTATATCTGTGCCACCCGCTGGACAGAGCATCC

ACGCGTACGCGGCCGCTCGAGCAGAAACTCATCTCAGAAGAGGATCTGGCAGCAAATGATATCCTGGATT
 ACAAGGATGACGACGATAAGGTTTAA

Protein Sequence:

>MR209532 protein sequence
 Red=Cloning site Green=Tags(s)

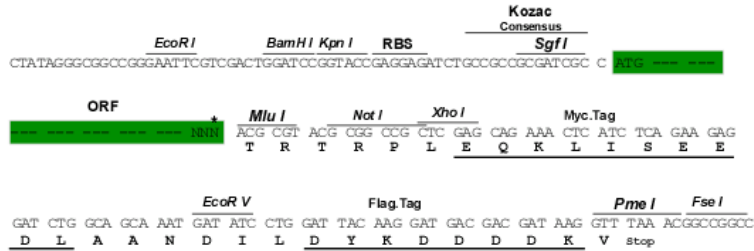
MSGCVLLSRGATAAAAAARASRVLREFTARRRPLHTSLQSCSFAKELFLGNIEQKGVFPFPEVVSQHELSE
 INQFVGPLEKFFTEEVDNRKIDQEGKIPVDTLEKLSLGLFGIQVPEEYGGGLSNTMYARLGEIISLDA
 SITVTLAAHQAIQKGIILVGNEEQKAKYLPKLSGHEIAAFCLTEPASGSDAASIQTRATLSEDKYFI
 LNGSKVWITNGLANIFTVFAKTEVVDSGSKTDKMTAFIVERDFGGITNGKPEDKLGIRGSNTCEVHFE
 NTRVPVENVLGEVGGFKVAMNINLSGRFSMGS AVAGMLKKLIELTAEYACTRKQFNRLSEFGLIQEKF
 ALMAQKAYVMESMAYL TSGMLDQPGFPCDSEI EAMVKVFSEAAWQCVSEALQILGGSGYMKDYPYERML
 RDARILLIFEGTNEILRLFIAL TGLQHAGRILTSRIKELKSGNVTVMETIGRKL RDSLGRVLDLGTGD
 LGVVHPSLGD SANKLEENVHYFGRTVETLLLRFGKNIVEEQLVLRVANILINLYGMTAVLSRASRSIRI
 GLRNHDHEVLLANMFCVEAYFQNLFSLSQLDKNAPENLDEQIKKVSQRQILEKRAYICAHPLDRAS

TRTRPLEQKLISEEDLAANDILDYKDDDDKV

Restriction Sites: SgfI-MluI

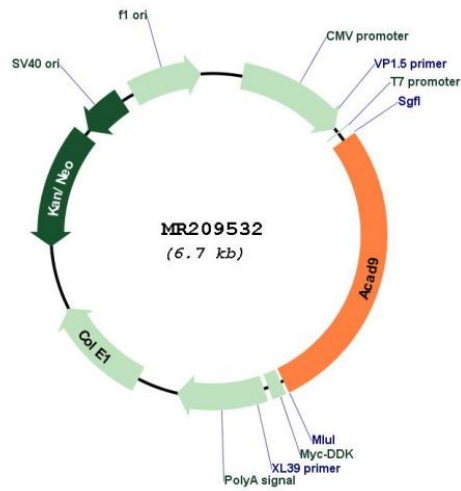
Cloning Scheme:

Cloning sites used for ORF Shutting:



* The last codon before the Stop codon of the ORF

Plasmid Map:



ACCN: NM_172678

ORF Size: 1875 bp

OTI Disclaimer:	The molecular sequence of this clone aligns with the gene accession number as a point of reference only. However, individual transcript sequences of the same gene can differ through naturally occurring variations (e.g. polymorphisms), each with its own valid existence. This clone is substantially in agreement with the reference, but a complete review of all prevailing variants is recommended prior to use. More info
OTI Annotation:	This clone was engineered to express the complete ORF with an expression tag. Expression varies depending on the nature of the gene.
Components:	The ORF clone is ion-exchange column purified and shipped in a 2D barcoded Matrix tube containing 10ug of transfection-ready, dried plasmid DNA (reconstitute with 100 ul of water).
Reconstitution Method:	<ol style="list-style-type: none">1. Centrifuge at 5,000xg for 5min.2. Carefully open the tube and add 100ul of sterile water to dissolve the DNA.3. Close the tube and incubate for 10 minutes at room temperature.4. Briefly vortex the tube and then do a quick spin (less than 5000xg) to concentrate the liquid at the bottom.5. Store the suspended plasmid at -20°C. The DNA is stable for at least one year from date of shipping when stored at -20°C.
RefSeq:	NM_172678.4
RefSeq Size:	3934 bp
RefSeq ORF:	1878 bp
Locus ID:	229211
UniProt ID:	Q8JZN5
Cytogenetics:	3 B
MW:	68.7 kDa
Gene Summary:	Required for mitochondrial complex I assembly (By similarity). Has a dehydrogenase activity on palmitoyl-CoA (C16:0) and stearoyl-CoA (C18:0). It is three times more active on palmitoyl-CoA than on stearoyl-CoA. However, it does not play a primary role in long-chain fatty acid oxidation (By similarity). Has little activity on octanoyl-CoA (C8:0), butyryl-CoA (C4:0) or isovaleryl-CoA (5:0) (By similarity).[UniProtKB/Swiss-Prot Function]