

Product datasheet for MR209514L3

Tkt (NM_009388) Mouse Tagged Lenti ORF Clone

Product data:

Product Type:	Expression Plasmids
Product Name:	Tkt (NM_009388) Mouse Tagged Lenti ORF Clone
Tag:	Myc-DDK
Symbol:	Tkt
Synonyms:	p6; p68
Mammalian Cell Selection:	Puromycin
Vector:	pLenti-C-Myc-DDK-P2A-Puro (PS100092)
E. coli Selection:	Chloramphenicol (34 ug/mL)
ORF Nucleotide Sequence:	The ORF insert of this clone is exactly the same as(MR209514).
Restriction Sites:	SgfI-MluI
Cloning Scheme:	

Cloning sites used for ORF Shuttling:



* The last codon before the Stop codon of the ORF.

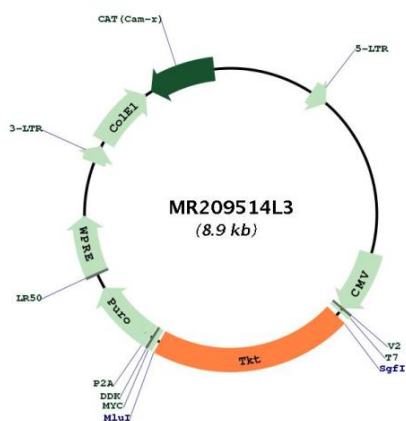
ACCN:	NM_009388
ORF Size:	1872 bp



[View online »](#)

OTI Disclaimer:	The molecular sequence of this clone aligns with the gene accession number as a point of reference only. However, individual transcript sequences of the same gene can differ through naturally occurring variations (e.g. polymorphisms), each with its own valid existence. This clone is substantially in agreement with the reference, but a complete review of all prevailing variants is recommended prior to use. More info
OTI Annotation:	This clone was engineered to express the complete ORF with an expression tag. Expression varies depending on the nature of the gene.
Components:	The ORF clone is ion-exchange column purified and shipped in a 2D barcoded Matrix tube containing 10ug of transfection-ready, dried plasmid DNA (reconstitute with 100 ul of water).
Reconstitution Method:	<ol style="list-style-type: none">1. Centrifuge at 5,000xg for 5min.2. Carefully open the tube and add 100ul of sterile water to dissolve the DNA.3. Close the tube and incubate for 10 minutes at room temperature.4. Briefly vortex the tube and then do a quick spin (less than 5000xg) to concentrate the liquid at the bottom.5. Store the suspended plasmid at -20°C. The DNA is stable for at least one year from date of shipping when stored at -20°C.
RefSeq:	NM_009388.2
RefSeq Size:	3242 bp
RefSeq ORF:	1872 bp
Locus ID:	21881
UniProt ID:	P40142
Cytogenetics:	14 B
Gene Summary:	This gene encodes an enzyme that binds magnesium and thiamine pyrophosphate and catalyzes the transfer of sugar phosphates to an aldose acceptor. This enzyme is a key component of the pentose phosphate pathway during glycolysis. It is significantly expressed in the cornea and may be involved in the cellular response against oxidative stress. Haploinsufficiency of this gene leads to decreased growth and reduction of adipose tissue. [provided by RefSeq, Dec 2013]

Product images:



Circular map for MR209514L3